

Special Issue

English

英語

Japanese やさしい日本語

Chinese 中 文

Portuguese Português

Korean 한국/코리아

Spanish Español

Filipino Filipino

Vietnamese Tiếng Việt

Nepali नेपाली भाषा



Earthquake and Tsunami

じしん 地震 と つなみ 津波

Do you know how to be careful?

● Please write the nearest tsunami evacuation building.



● Did you stock some water and food?

→ 3 days stock

Please put a **check** 

● Do you have the means to get information about evacuation when an earthquake occurs?

Nagoya City

Minato Ward office

Do you know what an earthquake is?

There are a lot of earthquakes in Japan. The ground will shake. Furniture will fall. Water, electricity and gas will possibly stop. There is a chance for a fire to break out.

To know more about earthquakes.



There is a chance for a tsunami to occur.

To watch the video about tsunami.



When an earthquake Occurs!

STEP 1	Ensure your safety	p. 4
STEP 2	Information gathering	p. 5
	Emergency items	p. 6
STEP 3	Evacuation	p. 7

Tsunami



Tsunami may reach Minato Ward in about 96 minutes .

Flooding from an embankment



※(名古屋市の被害設定に基づく) 津波シミュレーション

Earthquake occurs!

STEP 1 Ensure your safety

Protect your head when the ground is shaking.



First stay low



Protect your head



Do not move

提供：効果的な防災訓練と防災啓発提唱会議

Furniture will fall



Fire might breakout

To learn how to be careful.



STEP2

Information Gathering

Acquire information about evacuation from your smartphone or television.

Please look at the Nagoya International Center's website when an earthquake occurs.



Please look here

NIC Japanese Class for Adults Additional Applications

Time	Class A	Class B	Class C	Class D	Class E
10:00	3	0	0		3
11:00	2	0	0		0
14:00	12			0	4

Evacuation information has been issued. Click [here](#) for details.
For the latest information, please check the Japan Meteorological Agency website. Click [here](#) for details.

Disaster Preparedness [See more](#)

Disaster Related Information Link [See more](#)

Please bookmark

Japanese English Chinese (Simplified) Portuguese
Korean Spanish Filipino Vietnamese Nepali

▼App

Safety tips



Sends out information about earthquakes and tsunami that happens in Japan.



▲ iOS



▲ Android

Japanese English Chinese (Simplified/Traditional)
Portuguese Korean Spanish Filipino Vietnamese
Nepali Thai Indonesian

Emergency items

Please bring the items shown in the image below and evacuate. Make sure to keep the items in a place where you can quickly take it with you.

Water



3 days stock

Food



3 days stock

Smartphone



Money



A copy of passport



A copy of the residence card



Medicines



Your usual medicines

It is convenient to put in a backpack.



Prepare the things you need in your daily life and your personal belongings and take it with you during the evacuation.


To know more about the contents of an emergency kit.



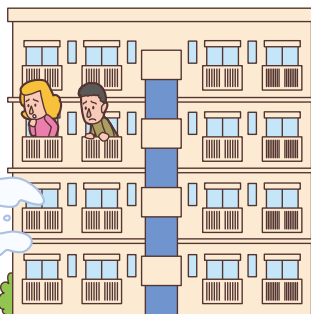
STEP3

Evacuation

Please move to a "high place"
during a tsunami!



Tsunami Evacuation Building
Move to a high-rise building in times of an Tsunami.



Safety



There is a chance that a tsunami with a height of 3.6 meters will come to Minato Ward.

Research about the place
you will be evacuating to

▼App



Nagoya Disaster Preparedness App

You can check location of the tsunami evacuation building and evacuation shelter.



▲ iOS



▲Android

Japanese English
Chinese (Simplified)

To view the Map of
Minato Ward.



Earthquake and Tsunami

Do you know how to be careful?

To download from the code below.



In situations where the danger is over, and still not safe to return home.

Tsunami

Fire

House falls down

提供：
神戸市



After the tsunami warning has been called off



Go and stay in the
Designated
Evacuation Shelter.



Designated Evacuation Shelters are the elementary schools, middle schools and so on.



提供：災害写真データベース

To know more about when you escape.



Created: February 2020

Published: Minato Ward Office Community Cooperation Promotion Office
(Phone Number 052-654-9622 FAX number 052-651-6179)

※ Only in Japanese. Available from Monday to Friday, 8:45AM to 5:30PM.

この冊子は、港区に住む外国人有志・その他の各種団体の協力を得て、一般財団法人自治体国際化協会の助成により作成されました。