




I want to know

Fujimae Tidal Flat

Fun Facts

Was this really the planned site for waste landfill!?

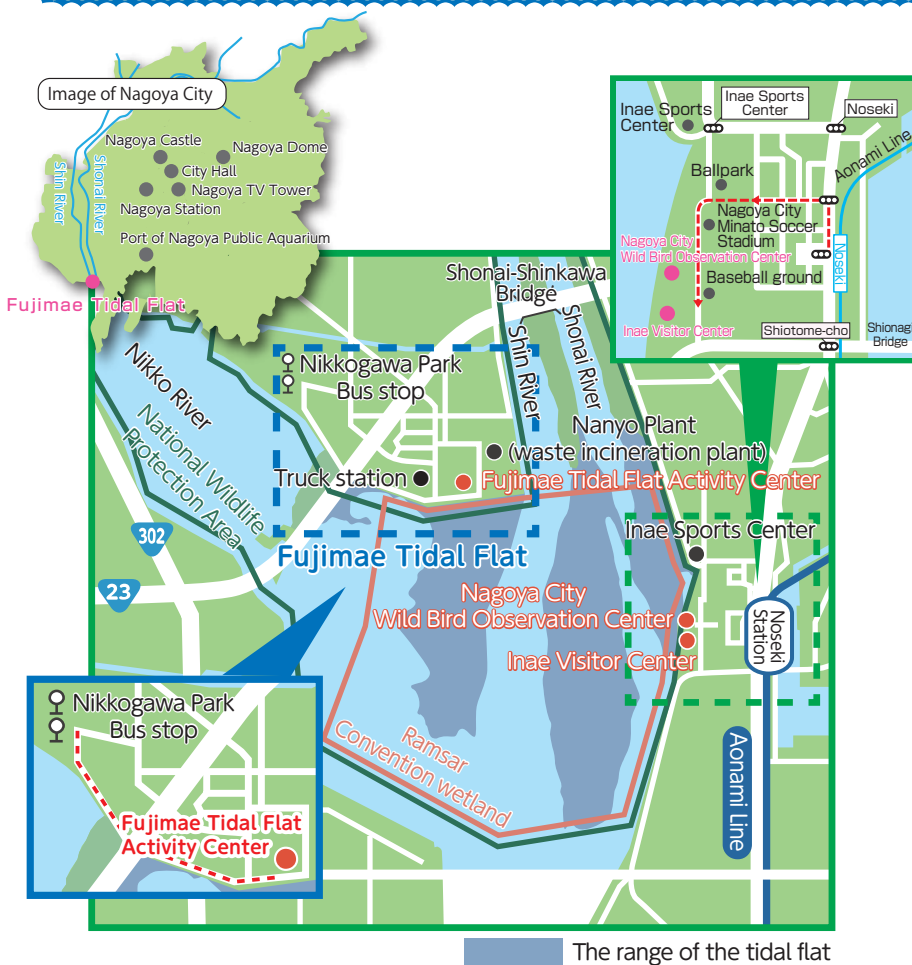
Nagoya City continued to produce increasing amounts of waste at the end of the twentieth century, and the city was facing a problem. They thought they were going to run out of places for landfill and had to do something. At that time, Fujimae Tidal Flat became the city's choice for a new landfill site. However, the tidal flat is an important stopover for migratory birds. In the end, the plan was discontinued due to the concern of citizens who wanted to protect nature following the broader worldwide trend toward environmental conservation. Since then, citizens, manufacturers, and the city government have continued to work on reducing waste.



An internationally important stopover for migratory birds

Fujimae Tidal Flat is an internationally important wetland registered under the Ramsar Convention. This Convention is an international treaty to protect important tidal flats and wetlands and the fauna and flora that live there. It is known as the Ramsar Convention because it was debated and signed in the town of Ramsar, Iran, in 1971. Fujimae Tidal Flat was registered as an important wetland in November 2002.





Nagoya City Wild Bird Observation Center

TEL: 052-381-0160
Public transportation: Get off at "Noseki Station" on the Aonami Line and walk for 15 minutes. Parking is available.
Closed: Monday every week (Tuesday if Monday is a public holiday), the third Wednesday of every month (the fourth Wednesday if the third is a public holiday), during the New Year (December 29 to January 3)

Ministry of the Environment Inae Visitor Center

TEL: 052-389-5821
Public transportation: Get off at "Noseki Station" on the Aonami Line and walk for 15 minutes. Parking is available.
Closed: Please check closing times on the website of the Chubu Regional Environmental Office



Ministry of the Environment Fujimae Tidal Flat Activity Center

TEL: 052-309-7260
Public transportation: Get off the city bus at "Nikkogawa Koen" and walk for 20 minutes. Parking is available.
Closed: Please check closing times on the website of the Chubu Regional Environmental Office

[Common to all three centers]

- Opening hours: 9:00 to 16:30
- Admission: Free

Advance reservations are required for large group use. Please inquire with each facility.





Ramsar Site

Welcome to!

Fujimae Tidal Flat!

Fujimae Tidal Flat, located in the southeast of Nagoya, is a wonderland where fish, crabs and many other creatures live!
It is also an important place for birds to eat and rest during their migration from south to north and back.
The waters that flow from the inland prefecture of Gifu through the Shonai River, the Nikko River and the Shin River enter Ise Bay at Fujimae Tidal Flat. Fujimae Tidal Flat is an important link between the mountains and the sea.
Come and take a nature walk on the only remaining tidal flat in Nagoya!



Nagoya was accredited as a "Ramsar Wetland City" in January 2025.
The city is working on the conservation and regeneration of wetlands, and we will continue to promote the conservation and wise use of the Fujimae Tidal Flat in the future.

Issued by

Environmental Planning Section, Environmental Bureau, Nagoya City
Environmental Education Center

13th Fl., Fushimi Life Plaza, 1-23-13 Sakae, Naka-ku, Nagoya 460-0008

TEL: 052-223-1067 FAX: 052-223-4199

Fujimae Tidal Flat

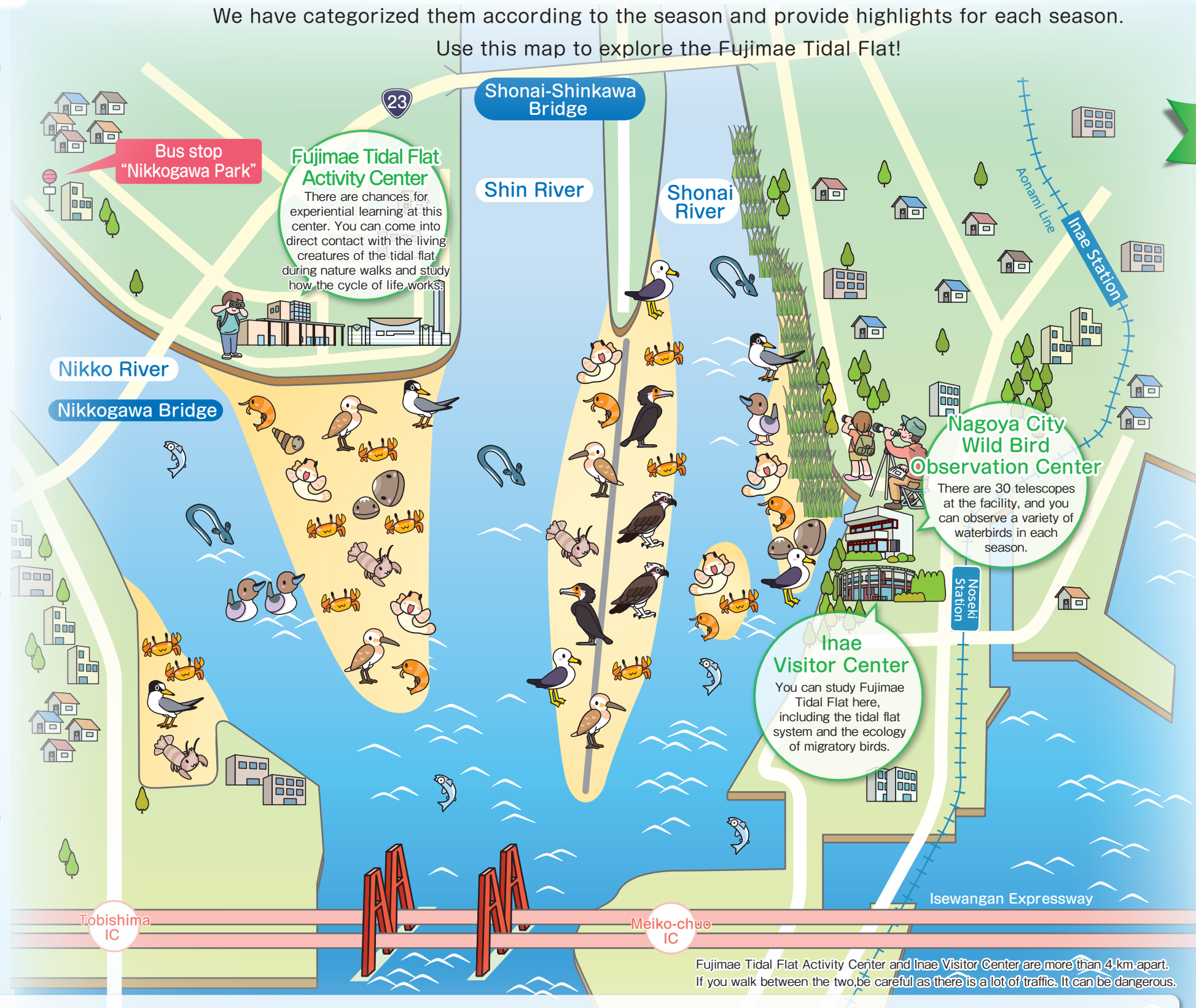
Nature of the Four Seasons and Highlights

MAP

The living creatures that you can see at the Fujimae Tidal Flat change depending on the season.

We have categorized them according to the season and provide highlights for each season.

Use this map to explore the Fujimae Tidal Flat!



Spring

As it gradually gets warmer, the sea water recedes and the tidal flat expands. The winds that blow across the surface of the water feel good, and the water sparkles in the spring sunshine. This is the best season for migratory bird-watching.

Summer

This is the best season for observing the living creatures of the tidal flat. What kind of life is there underneath the rocks in the tide pools? What kind of life is hiding in the large and small holes made on the surface of the tidal flat? Discover the answers with your own eyes.

Autumn

Various migratory birds stop by to rest their wings on their trip to the southern hemisphere. Try participating in the "Fujimae Tidal Flat Coastal Clean-up Campaign" and make the coast a safer place for the birds and a cleaner place for everyone.

Winter

This is the season when the large tidal flat only comes out at night, and birds come to eat even during the darkest nights. Fujimae Tidal Flat is a very important place for the birds to pass the winter.

Observe! Tidal flat manners

Before entering the tidal flat

The tidal flat is a fun place where you can encounter migratory birds, crabs and other living creatures, but it can also be dangerous. We ask people who want to enter the Fujimae Tidal Flat to please make sure to visit the Fujimae Tidal Flat Activity Center beforehand (see details on back).

Consider the creatures who live here

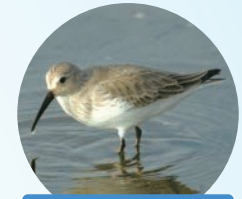
The tidal flat is the home of living creatures. Go there knowing that you are an intruder in their world. Do not feed any wild animals. If you go fishing, make sure to clean up after yourself and not to leave any fishing lines or hooks behind.

Precautions when walking on the tidal flat

Walk carefully on the tidal flat. Your feet sometimes get stuck in deep mud or and you can cut them on oysters or barnacles. In addition, take care not to get left behind when the tide comes in.

at
Fujimae Tidal Flat

Living Creatures you can encounter



Dunlin
(*Calidris alpina*)



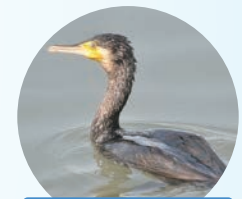
Red-necked stint
(*Calidris ruficollis*)



Endangered species
Little tern
(*Sternula albigularis*)



Eurasian wigeon
(*Mareca penelope*)



Great cormorant
(*Phalacrocorax carbo*)



Kentish plover
(*Charadrius alexandrinus*)



Osprey
(*Pandion haliaetus*)



Eurasian whimbrel
(*Numenius phaeopus*)



Endangered species
Mudskipper
(*Periophthalmus*)



Japanese mud crab
(*Macrophthalmus japonicus*)



Japanese mud shrimp
(*Upogebia major*)



Japanese basket clams
(*Corbicula japonica*)

※Before going to the tidal flat, check to see when low tide is.

※Endangered species are based on the evaluations of the "Nagoya City Red List 2025."