

SAVE YOUR LIFE INFO

CHIKUSA WARD

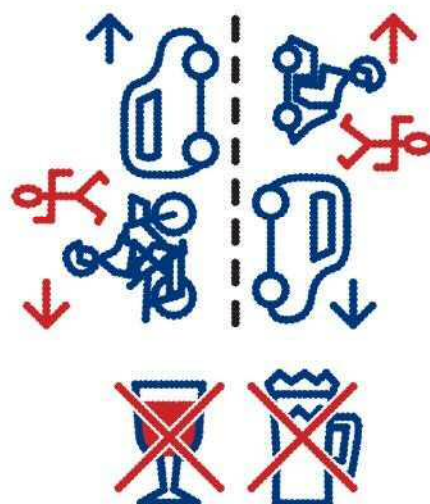
This leaflet will help you find information you need to live a comfortable life in Chikusa Ward, Nagoya City, including applicable laws and rules.

Having a conversation with your neighbors at the designated garbage collection site can be fun and lead to the development of close relationships that can help you and your family react more efficiently when a disaster strikes.

It is advisable for you to communicate well with members in your community.

Road traffic laws

Cars, motorbikes, and bicycles keep to the left, while people keep to the right. Drink driving is strictly prohibited. Cars and bicycles must be insured.



Pets

Dog owners are obliged to register their dogs at the regional public health center in their city and have them vaccinated against rabies. For more details, please contact the Chikusa Health Center.

☎052-753-1971



Parties

In general, houses in Japan are small and are built closely together. At home, please refrain from playing loud music and speaking in loud voices when having parties or get-togethers.



SAVE YOUR LIFE INFO



Nagoya,
UNESCO
City of Design



<http://www.city.nagoya.jp/chikusa/>



NAGOYA CHIKUSA WARD OFFICE
8-37, Kakuzandori, Chikusaku, Nagoya, 464-8644

☎052-762-3111

Co-operation:
Nagoya, UNESCO City of Design Organizing Committee

Nagoya Regional Immigration Bureau

Address: 5-18, Shoho-cho, Minato-ku, Nagoya City, Aichi Prefecture
One-minute on foot from Nagoya-Keibajo-mae Station on the Aonami Line

☎052-559-2150



<http://www.immi-moj.go.jp/english/soshiki/kikou/nagoya.html>

Council of Local Authorities for International Relations (CLAIR)

It provides a smartphone application for useful information on living in Japan.



<http://www.clair.or.jp/tagengo/>

Aichi International Association (AIA)

It provides helpful information for foreign residents in Aichi Prefecture.



<http://www2.aia.pref.aichi.jp/>

Nagoya International Center

It provides a wide range of services for people from different countries.



<http://www.nic-nagoya.or.jp/en/e/our-services/information-services>

Disaster preparedness

It provides emergency information.



<http://www.nic-nagoya.or.jp/saigai/>

Hospitals

It provides a list of hospitals with doctors who can speak a foreign language.

Nagoya International Center
☎052-581-0100



Doctor

In case of crime or traffic accident

☎110



Police

In case of fire or medical emergency

☎119



Firefighters



Ambulance

Garbage

On garbage collection days, please put your garbage out at your collection site by 8:00 a.m. Garbage must be disposed of in designated bags.

~~All days~~



A morning greeting is a great way to start the day.



Garbage collection days are scheduled according to garbage type. (Garbage pick-up days vary according to address. Please contact the Environmental Office.) You can look up garbage collection schedules with a smartphone app called "3R."

Combustible garbage

Kitchen and other types of garbage that can be incinerated
(Garbage of which one side is longer than 30 cm is categorized as bulk garbage and cannot be disposed of on combustible garbage collection days.)



Kitchen garbage



Grass and branches



Tissue



Razor blades



Shoes



Rubber gloves



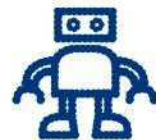
Paper diapers



Ballpoint pens



Plastic hangers



Toys



CD-DVD



Garbage must be disposed of in designated bags.

Please confirm your garbage collection day.

✓	Mon
✓	Thu
✓	Tue
✓	Fri



PET plastic bottles

Non-combustible garbage

Garbage that cannot be incinerated

(Garbage of which one side is longer than 30 cm is categorized as bulk garbage and cannot be disposed of on non-combustible garbage collection days.)



Pots, kettles, etc.



Tableware

Alkaline batteries
Manganese batteries



Scissors



Clothes irons



Garbage must be disposed of in designated bags.

Please confirm your garbage collection day.

◎week	1st
✓	2nd
✓	3rd
✓	4th
◎Day of the week	Wed
✓	Thu
✓	Fri

PET plastic bottles

PET plastic bottles are categorized as recyclable garbage.



Glass bottles

Glass bottles are categorized as recyclable garbage. They must be placed in blue baskets at your garbage collection site.



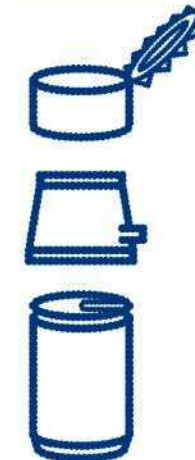
Garbage must be disposed of in designated bags.

Please confirm your garbage collection day.

✓	Mon
✓	Thu
✓	Wed
✓	Tue
✓	Fri

Cans

Cans are categorized as recyclable garbage.



Recyclables and garbage separation app "3R"

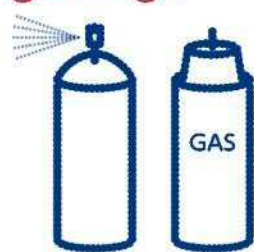


Garbage must be disposed of in designated bags.

Please confirm your garbage collection day.

✓	Mon
✓	Thu
✓	Wed
✓	Tue
✓	Fri

Explosive garbage



Spray cans Gas cartridges



Camping gas canisters



Lighters



Lithium batteries



Garbage must be disposed of in designated bags.

Please confirm your garbage collection day.

✓	Mon
✓	Thu
✓	Tue
✓	Fri

Bulk garbage

Garbage of which one side is longer than 30 cm is categorized as bulk garbage and accepted for a fee. You need to apply for the collection of bulk garbage.

☎052-950-2581
☎0120-758-530



Sofas ¥250



Carpet ¥500



Bicycles ¥500



Kerosene heaters ¥500

Disaster preparedness

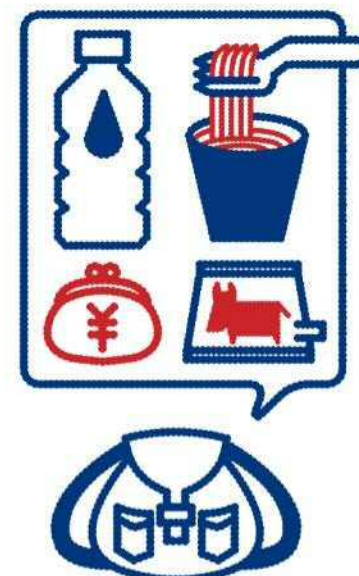


<http://www.city.nagoya.jp/kankobunkakoryu/cmsfiles/contents/0000083/83672/bousai-tirashi-eng.pdf>



3-day food stock

Keep emergency supplies in an easy-to-carry container in an easily accessible location.



Earthquake response

1. Get under a table or desk
2. After shaking stops, turn off gas
3. Evacuate



Self-help efforts

Try to protect yourself right after a disaster strikes.

