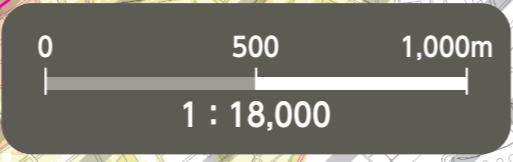


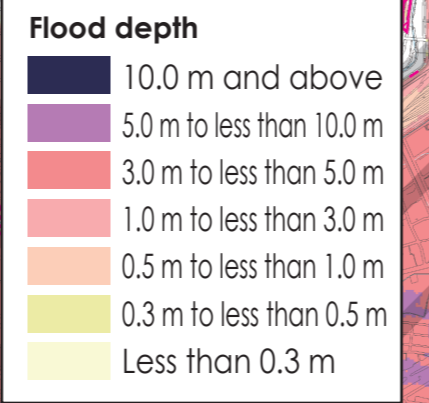
# Flood Hazard Map Moriyama Ward

As of June, 2022

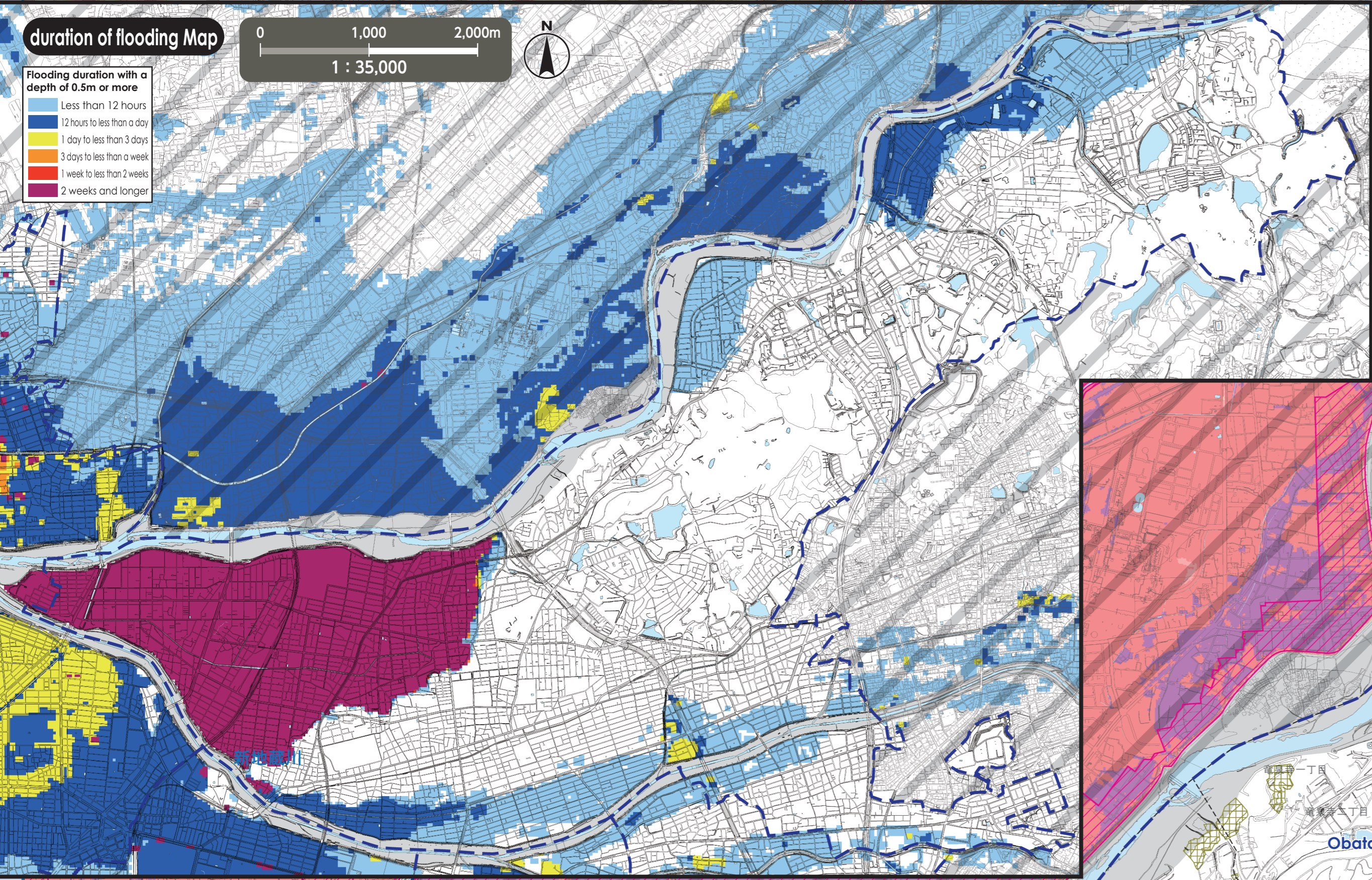
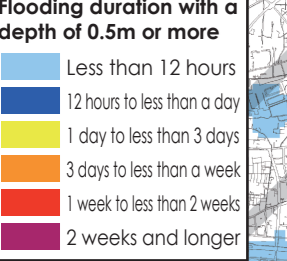
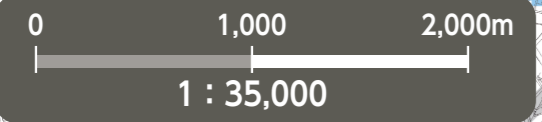


**Flooding risk areas including collapse of buildings**  
(In the event of a river flood, houses may collapse or be washed away due to overflowing water or erosion of riverbanks.)

When an evacuation information is emitted, residents living in these areas must evacuate to outer areas instead of going to upper floors.



## duration of flooding Map



The shaded areas are outside Nagoya City.

**Evacuation to Designated Emergency Evacuation Shelter**

○ Please evacuate to a designated emergency evacuation shelter according to the type of disaster if you are in danger (especially when evacuation information (evacuation instruction, etc.) is released) and you cannot stay at home to save your life.

○ Designated emergency evacuation shelters within flooding risk areas including collapse of buildings have been confirmed to be structurally safe.

○ Please contact the ward office in advance to confirm the place you are going is safe if you intend to evacuate on your own command.

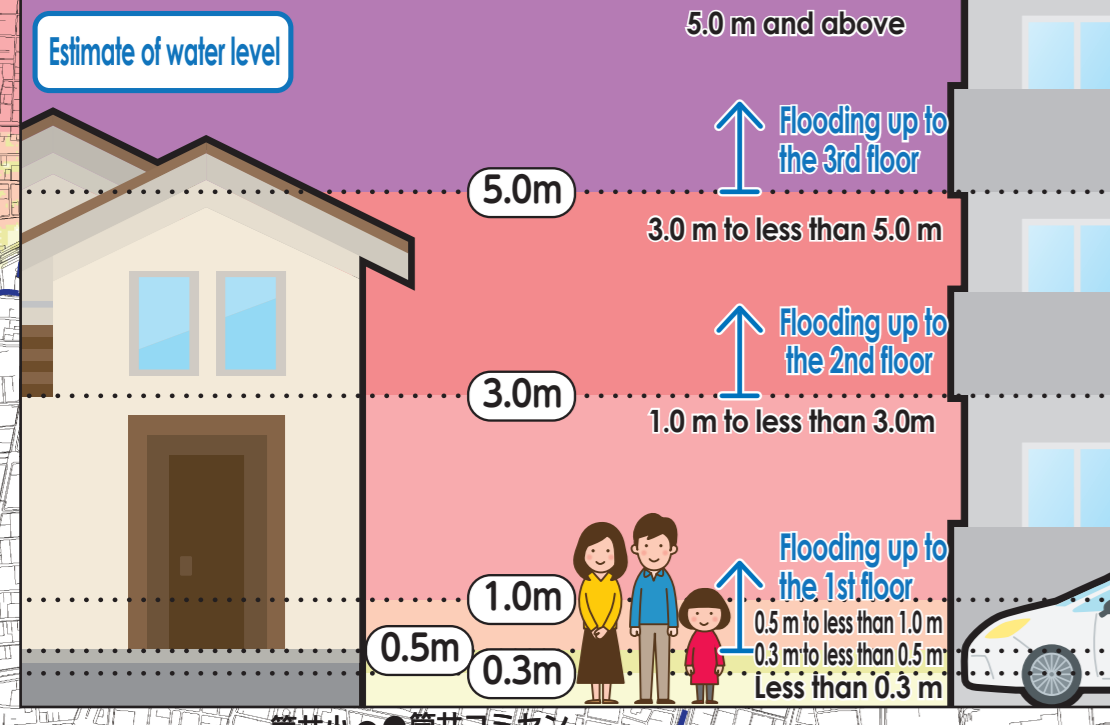
**Nagoya City Disaster Countermeasures Office / Moriyama Ward Headquarters (Moriyama Ward Office)**  
Tel: 793-3434 (Main) 796-4511~6 (Direct) Fax: 794-2256

**Public Office (Marked as □)**

**A** Moriyama Ward Office  
**B** Moriyama Ward Office Shidami Branch  
**C** Moriyama Fire Station  
**D** Moriyama Fire Station Shidami Branch  
**E** Moriyama Fire Station Morinishi Branch  
**F** Moriyama Fire Station Omori Branch  
**G** Moriyama Public Works Office

\*Please refer to the hazard maps of other wards to verify whether if their designated emergency evacuation shelters are open to our residents. Hazard Maps of all the wards are available on the official website of Nagoya City.

No.	Facility Name (Marked as □)	Address	Designated Emergency Evacuation Shelter (Flood/Inland flood/Landslide)
1	Omori Elementary School	401 Omori 4-chome	○
2	Omori Junior High School	2601 Omori 1-chome	○
3	Omori Community Center	206-1 Omori 4-chome	○
4	Omori Kita Elementary School	321 Gozembora	○
5	Omori Kita Community Center	319-1 Omori 5-chome	○
6	Amakoda Elementary School	1501 Amakoda 2-chome	2nd floor or higher
7	Amakoda Community Center	1605 Mukaedai 2-chome	○
8	Moritaka Nishi Elementary School	1108 Moritaka 1-chome	○
9	Moritaka Junior High School	405 Shiken-ya 2-chome	2nd floor or higher
10	Moritaka Nishi Community Center	201 Moritaka 3-chome	○
11	Honjigaoka Elementary School	908 Honjigaoka	○
12	Honjigaoka Community Center	801 Honjigaoka	○
13	Moritaka Higashi Elementary School	442 Moritaka Higashi 1-chome	2nd floor or higher
14	Moritaka Higashi Community Center	501-3 Hakusan 4-chome	○
15	Obata Elementary School	3-4 Obata 1-chome	○
16	Moriyama Higashi Junior High School	7-3 Obata 5-chome	○
17	Obata Community Center	3-7 Obata 2-chome	○
18	Obata Kita Elementary School	1801 Obata Kita	○
19	Obata Kita Community Center	867 Midorigaoka	○
20	Moriyama Sports Center	112 Ryusenji 2-chome	2nd floor or higher
21	Suishoen Meeting House	704 Suishoen 1-chome	○
22	Naeshiro Elementary School	10-6 Naeshiro 2-chome	2nd floor or higher
23	Naeshiro Community Center	19-12 Obata Minami 1-chome	○
24	Obata Asahi Kindergarten	5-9 Obata Minami 2-chome	○
25	Moriyama Elementary School	6-27 Nishijima-cho	○
26	Moriyama Junior High School	13-63 Oyashiki	○
27	Moriyama Lifelong Learning Center	2-6 Moriyama 3-chome	○
28	Moriyama Hall	19-14 Nishijima-cho	2nd floor or higher
29	Nijo Elementary School	248 Torigami-cho	3rd floor or higher
30	Moriyama Nishi Junior High School	58 Shimmori-cho	3rd floor or higher
31	Shirasawa Elementary School	233 Shirasawa-cho	2nd floor or higher
32	Moriyama Kita Junior High School	116-1 Matsusaka-cho	○
33	Shirasawa Community Center	1 Shirotsuchi-cho	○
34	Nijikken-ya Elementary School	16-16 Sarayashiki	2nd floor or higher
35	Nijikken-ya Hall	14-56 Nijikken-ya	2nd floor or higher
36	Toribami Elementary School	17-6 Toribami 2-chome	3rd floor or higher
37	Seko Elementary School	1303 Seko Higashi 3-chome	3rd floor or higher
38	Moriyama Water Treatment Center	3-1 Komegase-cho	3rd floor or higher
39	Shidami Higashi Elementary School	323-2 Aza doko, Kamishidami	2nd floor or higher
40	Shidami Higashi Community Center	1175-1 Aza miyamae, Nakashidami	○
41	Nakashidami Nursery School	1174 Aza miyamae, Nakashidami	○
42	Shidami Nishi Elementary School	177 Fukusawa 2-chome	○
43	Shidami Nishi Community Center	1001 Izumigaoka	○
44	Kikko Elementary School	1601 Kikko 1-chome	2nd floor or higher
45	Kikko Community Center	1705 Kikko 2-chome	○
46	Kikko Junior High School	102 Sasagane 2-chome	○
47	Shimoshidami Elementary School	1825 Aza shimonoguchi, Shimoshidami	○
48	Shidami Junior High School	1402 Aza yokozutsumi, Shimoshidami	○
49	Shidami District Hall	1390-1 Aza yokozutsumi, Shimoshidami	○
50	Shidami Sportsland	2287-1 Aza haesagari, Shimoshidami	○
51	Shimoshidami Community Center	1659 Aza nagato, Shimoshidami	○
52	Togokusan Fruit Park	2110-353 Aza togoku, Kamishidami	○
53	Kamishidami Elementary School	1220-2 Aza otsuka, Kamishidami	○



**(Descriptions)**

- The inundation area as well as the depth and duration of flooding were calculated with the maximum possible rainfall in mind.
- The inundation area as well as the depth and duration of flooding are only assumptions. Flooding may occur at a larger scale depending on a variety of factors.
- This map was created looking into all the areas indicated on the expected inundation area maps published by the Ministry of Land, Infrastructure, Transport and Tourism (MLIT) and Aichi Prefecture. The deeper flooding depth and the longer flooding duration were indicated in areas that overlapped.

~Expected inundation area maps used to make this map (Moriyama Ward)~

Expected Inundation Area Map	Issued by	Released on	Rainfall condition	Flooding Prediction Map	Issued by	Released on	Rainfall condition
Shonai/Yada Rivers	MLIT	Mar-2020	24-hour precipitation amount 578mm	Yada and Kanare Rivers basin	Aichi Prefecture	Sep-2019	24-hour precipitation amount 735mm (Yada River basin)
Yada River	Aichi Prefecture	Aug-2019	24-hour precipitation amount 735mm				24-hour precipitation amount 836mm (Kanare River basin)
Kanare River	Aichi Prefecture	Aug-2019	24-hour precipitation amount 836mm				

**Legend**

- 0** Designated Emergency Evacuation Shelter  
Places where you can take shelter from the danger of a flooding disaster in order to save your life.
- +** Underpass  
Areas where heavy rain will cause roads to be flooded and closed to traffic.
- Landslide Disaster (Special) Warning Zone  
Areas where landslides may occur.
- - -** Ward boundary
- - -** School district boundary  
School districts are approximate. Please contact the respective ward office for further information.
- Designated Emergency Evacuation Shelter outside the ward

We used the basic urban planning maps used between 2015 and 2016 to create this map. Corrections were made accordingly. We used the urban planning maps of the following places with their consent: Seto City, Kasugai City, Toyoyama Town, Nagakute City and Owariasahi City. (Approval numbers - Seto City: 3瀬都計165, Kasugai City: 3春都政161, Toyoyama Town: 3豊防抛61, Nagakute City: 3長都162, Owariasahi City: Reiw3, 1) Landslide Disaster Hazard Map, Aichi Prefecture, Creative Commons License Attribution 2.1 Japan (<http://creativecommons.org/licenses/by/2.1/jp/>)