

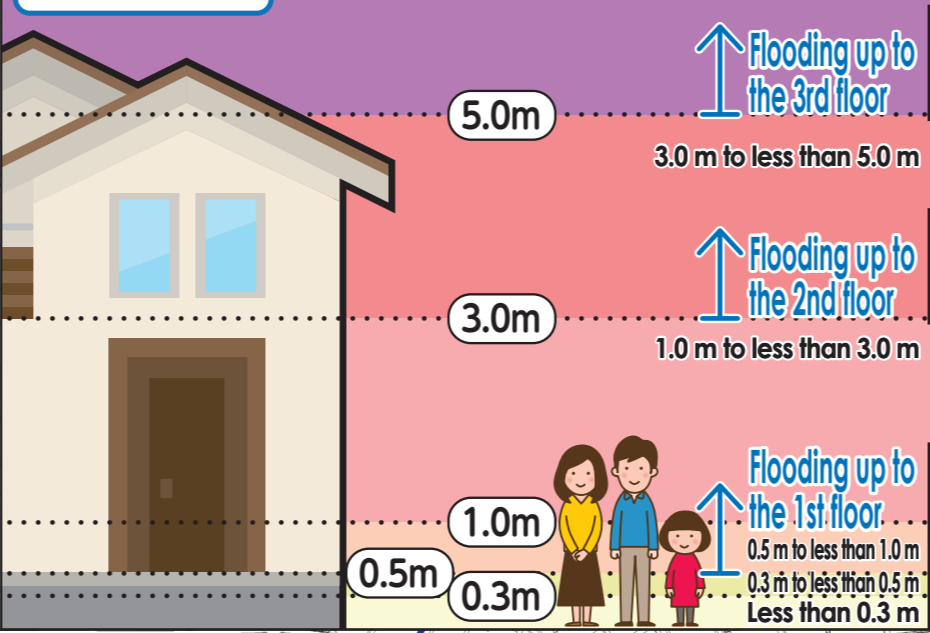
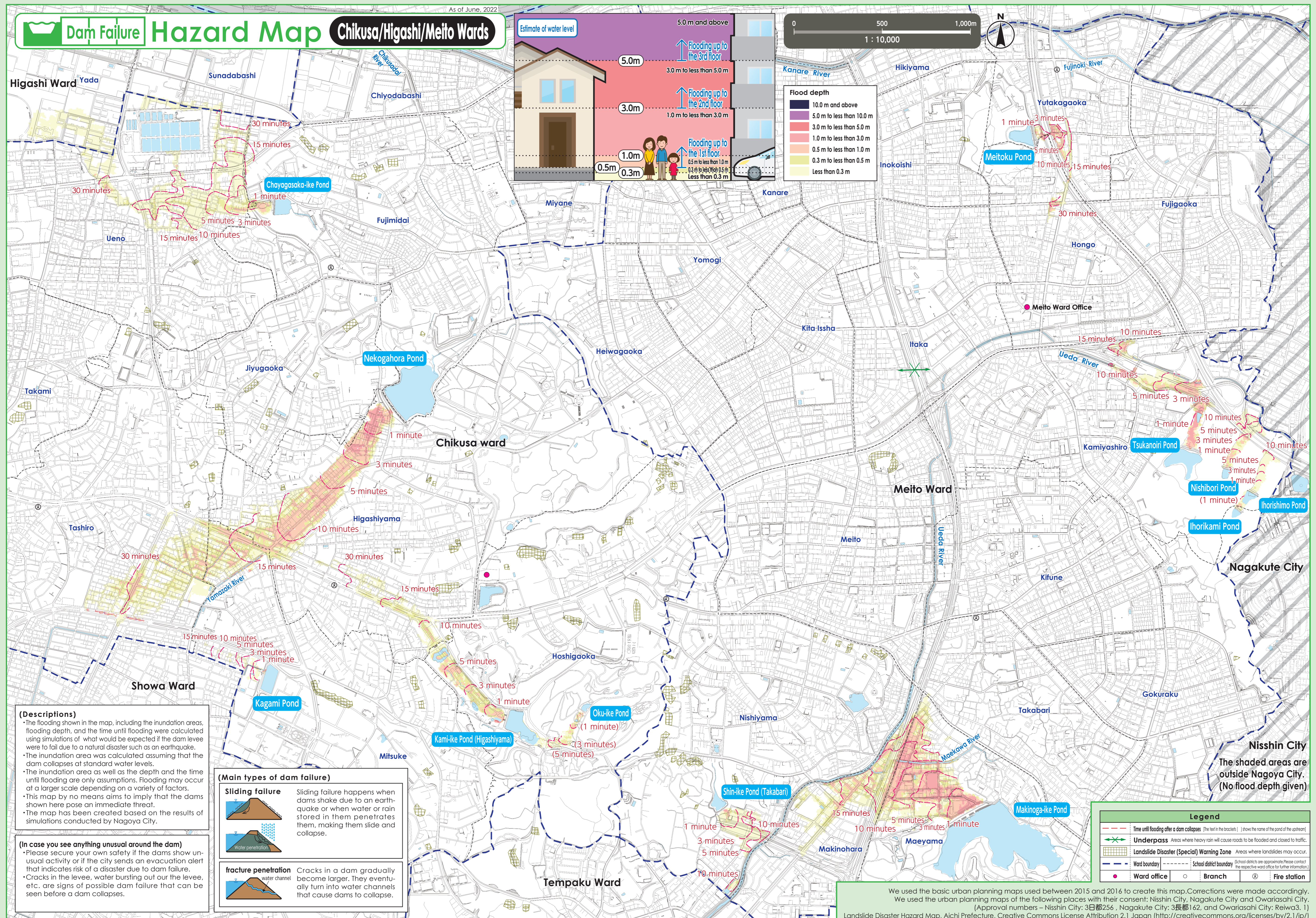
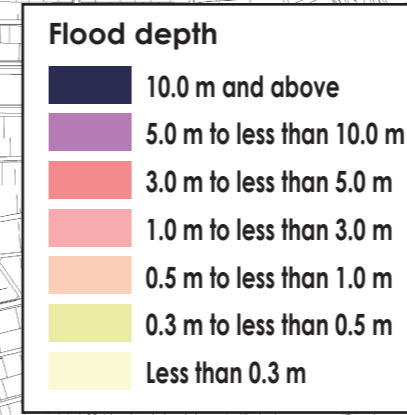


Dam Failure

## Hazard Map

Chikusa/Higashi/Meito Wards

Estimate of water level

0 500 1,000m  
1 : 10,000

## (Descriptions)

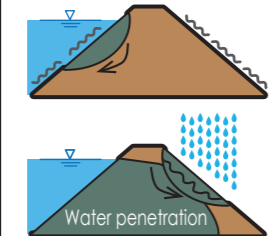
- The flooding shown in the map, including the inundation areas, flooding depth, and the time until flooding were calculated using simulations of what would be expected if the dam levee were to fail due to a natural disaster such as an earthquake.
- The inundation area was calculated assuming that the dam collapses at standard water levels.
- The inundation area as well as the depth and the time until flooding are only assumptions. Flooding may occur at a larger scale depending on a variety of factors.
- This map by no means aims to imply that the dams shown here pose an immediate threat.
- The map has been created based on the results of simulations conducted by Nagoya City.

## (In case you see anything unusual around the dam)

- Please secure your own safety if the dams show unusual activity or if the city sends an evacuation alert that indicates risk of a disaster due to dam failure.
- Cracks in the levee, water bursting out of the levee, etc., are signs of possible dam failure that can be seen before a dam collapses.

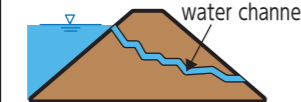
## (Main types of dam failure)

## Sliding failure



Sliding failure happens when dams shake due to an earthquake or when water or rain stored in them penetrates them, making them slide and collapse.

## fracture penetration



Cracks in a dam gradually become larger. They eventually turn into water channels that cause dams to collapse.

## Legend

	Time until flooding after a dam collapses [The text in the brackets] shows the name of the pond of the upstream]
	Underpass Areas where heavy rain will cause roads to be flooded and closed to traffic.
	Landslide Disaster (Special) Warning Zone Areas where landslides may occur.
	Ward boundary
	School district boundary [School districts are approximate. Please contact the respective ward office for further information.]
	Ward office
	Branch
	Fire station

We used the basic urban planning maps used between 2015 and 2016 to create this map. Corrections were made accordingly.  
We used the urban planning maps of the following places with their consent: Nisshin City, Nagakute City and Owariasahi City.  
(Approval numbers - Nisshin City: 3日都256, Nagakute City: 3長都162, and Owariasahi City: Reiwa3. 1)  
Landslide Disaster Hazard Map, Aichi Prefecture, Creative Commons License Attribution 2.1 Japan (<http://creativecommons.org/licenses/by/2.1/jp/>)