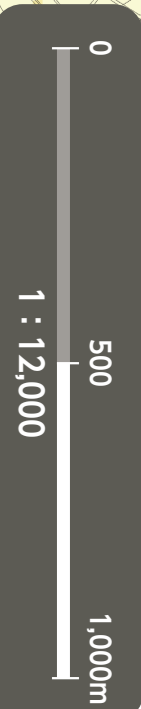


Inland flooding Hazard Map Meito Ward

As of June, 2022



\*For availability of evacuation to Designated Emergency Evacuation Sites in other wards, see the Hazard Maps of the wards. Hazard Maps of all the wards are available on the official site of Nagoya City.

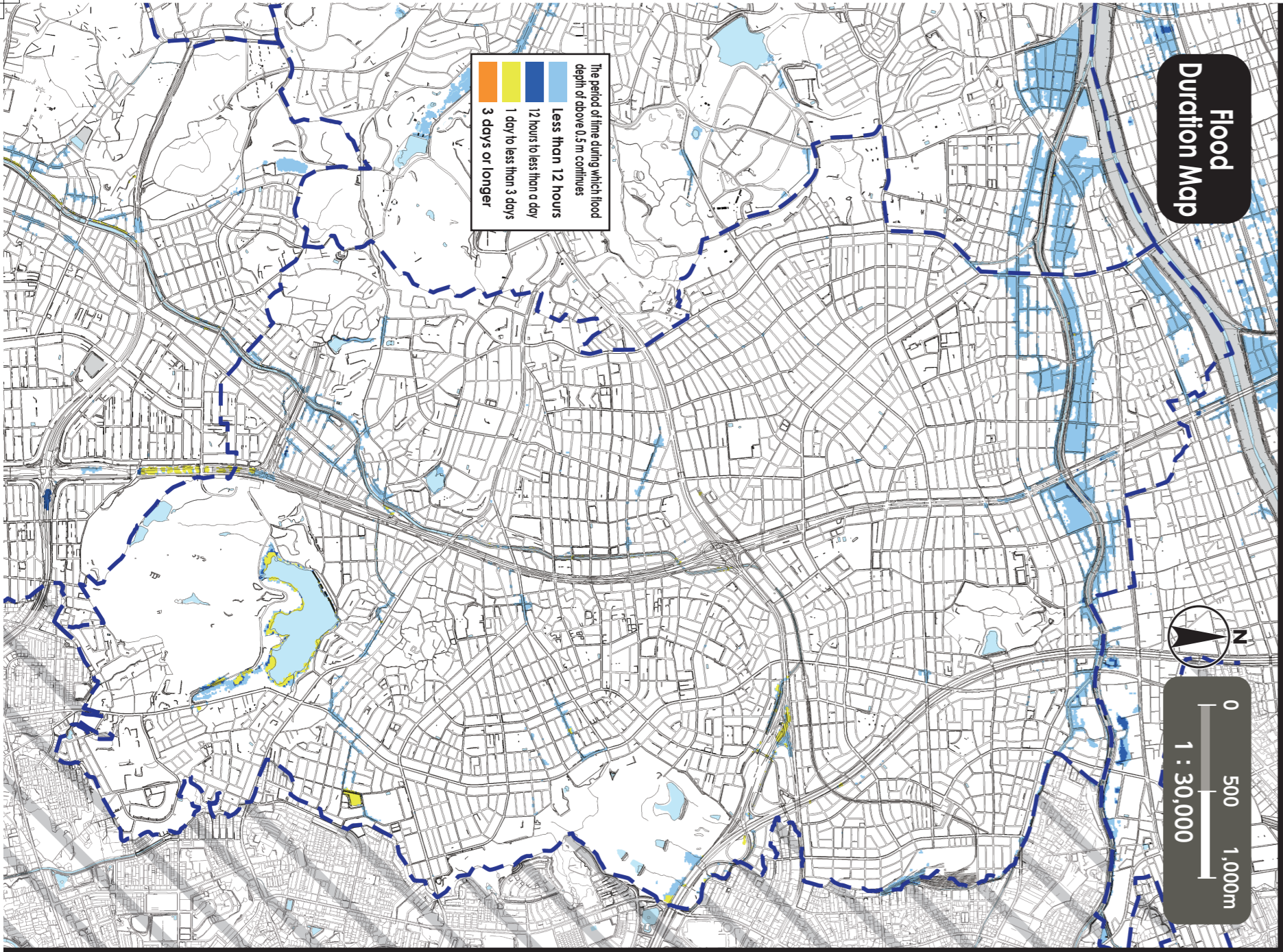
No.	Facility Name (Marked as □)	Address	Height (approx. Flooded Area)
[1]	Nishiyama Elementary School	2-33 Nishiyama-hondori	○
[2]	Kamioka Junior High School	1-18 Kamioka-cho	○
[3]	Nishiyama Community Center	2-34 Nishiyama-hondori	○
[4]	Wakayama & Sawaguchi Bureau	404 Sanke-cho	○
[5]	Nishiyama Water Treatment Center	134 Kami-noi 3-chome	○
[6]	Meito Elementary School	128 Isaba 2-chome	○
[7]	Nishiyama Kindergarten	41 Kami-noi 2-chome	○
[8]	Takabari Elementary School	1103 Takabari 2-chome	○
[9]	Takabari Community Center	1501 Takabari 2-chome	○
[10]	Itaka Elementary School	33 Chodo-cho	○
[11]	Itaka Junior High School	203-2 Yashiroguchi 2-chome	○
[12]	Itaka Community Center	54 Fujigoka	○
[13]	Fujigoka Elementary School	66 Koike-cho	○
[14]	Fujinori Junior High School	18 Akegoka	○
[15]	Fujigoka Community Center	1201 Kaname 2-chome	2nd floor or higher
[16]	Kaname Elementary School	1301 Inokoshihara 2-chome	2nd floor or higher
[17]	Kaname Junior High School	902 Yamamoto 3-chome	○
[18]	Kaname Community Center	604 Shiragetsu-cho	2nd floor or higher
[19]	Kaname Nursery School	1201 Inokoshi 2-chome	○
[20]	Inokoshi Elementary School	33 Aza-unobosama, Oaza-inokoshi, Itaka-cho	○
[21]	Inokoshi Community Center	920 Bunkyo 1-chome	○
[22]	Inokoshi Daini Nursery School	201 Umemoto 4-chome	○
[23]	Umemoto Elementary School	101 Umemoto 4-chome	○
[24]	Umemoto Community Center	501 Yomogi 1-chome	○
[25]	Yomogi Elementary School	301 Tsutsugoka	○
[26]	Yomogi Community Center	201 Tsutsugoka	○
[27]	Inokoshi Daini Nursery School	2-3 Chiyogoka, Chikusa Ward	○
[28]	Hongo Elementary School	237 Hongo 1-chome	○
[29]	Hongo Community Center	238 Hongo 1-chome	○
[30]	Kirune Elementary School	2301 Kirune 3-chome	○
[31]	Takabari Junior High School	801 Sakado 3-chome	2nd floor or higher
[32]	Kirune Community Center	1304-2 Sakado 2-chome	○
[33]	Gokuraku Elementary School	901 Takabari 3-chome	○
[34]	Meito Senior High School	351 Oobori 1-chome	○
[35]	Gokuraku Community Center	801-2 Takabari 1-chome	○
[36]	Meito Sports Center	307-12 Aza-sekido, Oaza-inokoshi, Itaka-cho	○
[37]	Kamiyashiro Elementary School	1002 Kamiyashiro 5-chome	○
[38]	Kamiyashiro Junior High School	301 Yashirogoka 4-chome	○
[39]	Kamiyashiro Community Center	1501 Kamiyashiro 5-chome	2nd floor or higher
[40]	Meito Lifelong Learning Center	802 Yashirogoka 3-chome	○
[41]	Yashirogoka Community Center	1501 Yashirogoka	○
[42]	Yashirogoka Elementary School	2108 Yashirogoka	○
[43]	Hikiyama Elementary School	1105 Hikiyama 1-chome	2nd floor or higher
[44]	Hikiyama Community Center	617 Hikiyama 3-chome	○
[45]	Heiwagaoka Elementary School	11 Heiwagaoka 1-chome	○
[46]	Toho High School	11 Heiwagaoka 3-chome	○
[47]	Heiwagaoka Community Center	29 Heiwagaoka 5-chome	○
[48]	Meiyama Elementary School	1501 Meiyama 2-chome	○
[49]	Mekinoike Junior High School	2504 Umemoto 1-chome	○
[50]	Umemoto Kindergarten	210 Umemoto 3-chome	○
[51]	Meiyama Community Center	36-2 Aza-umemoto, Oaza-inokoshi, Itaka-cho	○
[52]	Kita Isaba Elementary School	101 Kamiyaga 1-chome	○
[53]	Chikusa High School	206 Yashiro 2-chome	○
[54]	Kita Isaba Community Center	190-3 Yashiro 2-chome	○
[55]	Makino Elementary School	401 Makinohara 3-chome	2nd floor or higher
[56]	Makinohara Community Center	101-2 Takabari 1-chome	○

Evacuation to Designated Emergency Evacuation Site

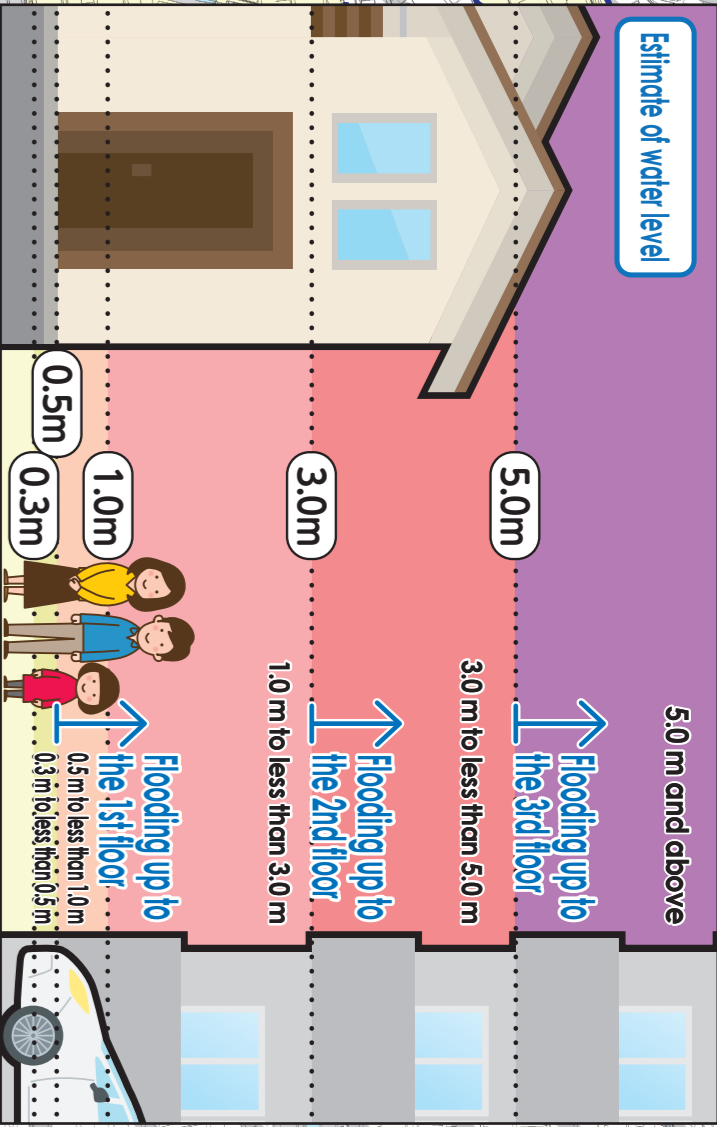
Please evacuate to a Designated Emergency Evacuation Site according to the disaster type when you are at risk from disasters (especially when evacuation information (evacuation instructions) is issued) and unable to protect your life at home.  
Of your voluntarily evacuate regardless of evacuation instructions, please contact the ward office and confirm the evacuation site is safe.  
Nagoya City Disaster Countermeasures Office /  
Meito Ward Headquarters (Meito Ward Office)  
Tel: 773-1111 (Main) 778-3013 (Direct) Fax: 773-7664

Civil Services (Marked as □)

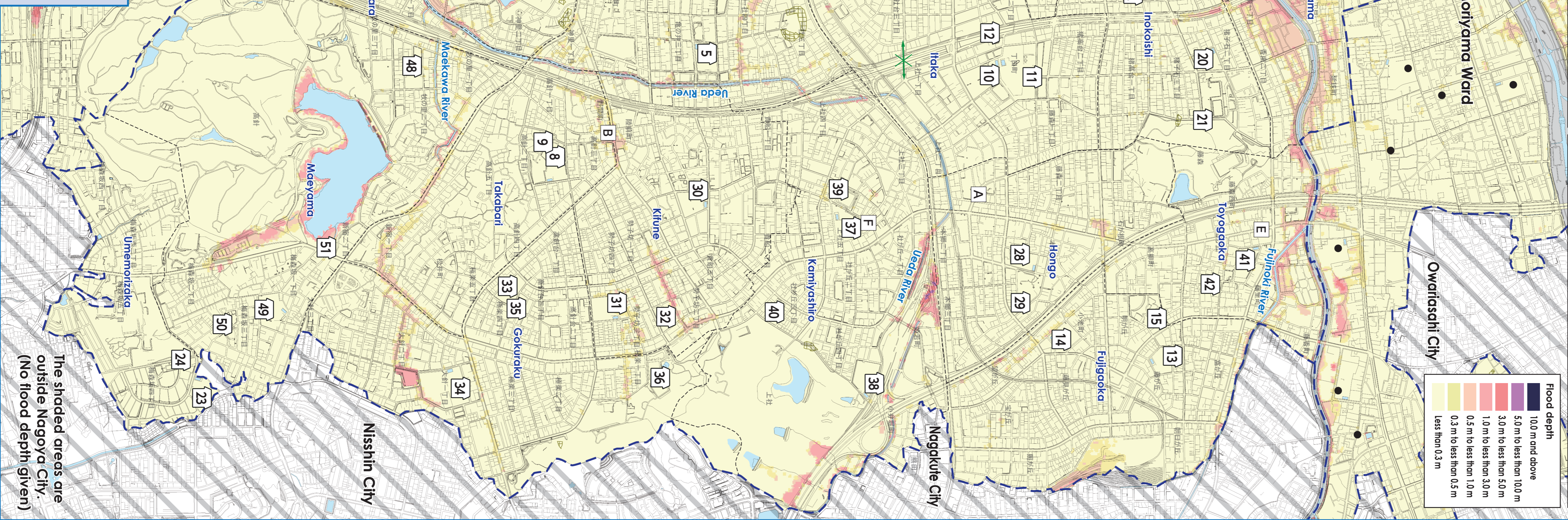
- [A] Meito Ward Office [C] Meito Fire Station [E] Meito Fire Station
- [B] Meito Fire Station [D] Meito Fire Station [F] Meito Public Works Office



(Descriptions)  
•Flood related information illustrated in the map is calculated by simulating immersion areas, flood depth, and flood duration as- surmed in case of sewer and small and medium-sized river (rivers unexpected to flood in the Flood Hazard Map) floods due to the maximum possible rainfall (156mm/h, 836mm/24h), considering the development status of facilities as of the end of FY2020.  
•The simulations consider shutdown of drain pumps and closing of sluice gates associated with river level rise.  
•Immersion areas, flood depth, and flood duration are only as- sumptions and they may largely exceed the assumptions de- pending on various conditions.  
•The map has been created based on the results of simulations conducted by Nagoya City.



- [0] Designated Emergency Evacuation Site (Where people can temporarily evacuate themselves from disaster risk to protect their lives)
- Underpass (Where the roads are flooded and closed off in case of heavy rain)
- Unsubside Disaster (Special) Warning Zone (Area where unsubsiding disaster is likely to occur)
- Ward boundary (Please contact the ward office for details.)
- School district (Please contact the ward office for details.)
- Designated Emergency Evacuation Site outside the ward



This map was created based on the City Planning Basic Map created in 2015 and 2016. A part of the map has been modified after the creation where necessary.  
As for the maps of Nishi City, Nagakute City, and Owarisachi City, the City Planning Basic Map is used under the approval of the cities. Approval numbers - Nishi City: 38都256, Nagakute City: 通都 42, and Owarisachi City: 環都3. 1)  
Landscape Disaster Hazard Map, Archi Prefecture, Creative Commons License Attribution 2.1 Japan (http://creativecommons.org/licenses/by/2.1/jp/)