

Inland flooding Hazard Map Moriyama Ward

As of June, 2022

0 500 1,000m
1 : 18,000



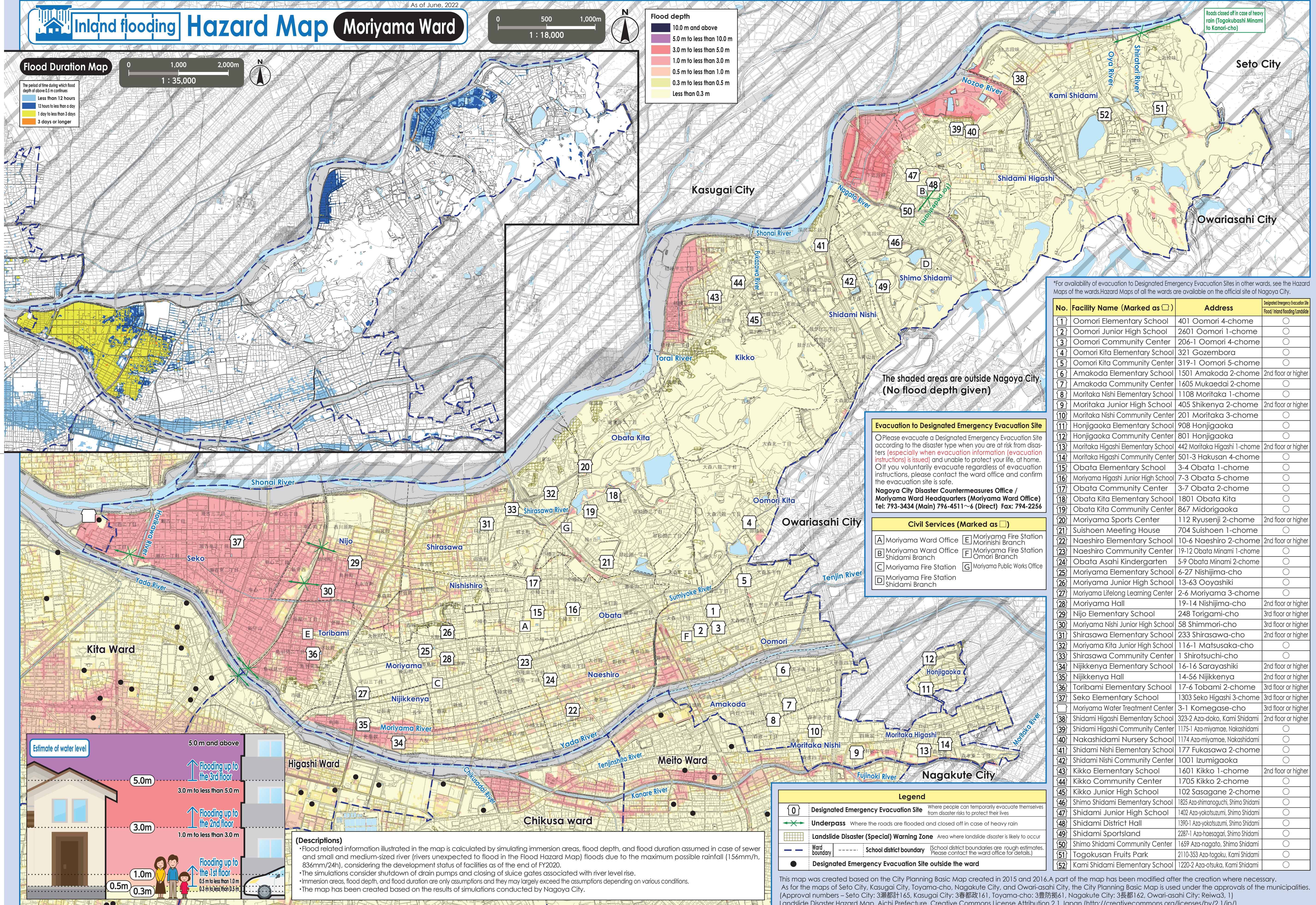
Flood depth
10.0 m and above
5.0 m to less than 10.0 m
3.0 m to less than 5.0 m
1.0 m to less than 3.0 m
0.5 m to less than 1.0 m
0.3 m to less than 0.5 m
Less than 0.3 m

Flood Duration Map

0 1,000 2,000m
1 : 35,000



The period of time during which flood depth of above 0.5 m continues
Less than 12 hours
12 hours to less than a day
1 day to less than 3 days
3 days or longer



*For availability of evacuation to Designated Emergency Evacuation Sites in other wards, see the Hazard Maps of the wards. Hazard Maps of all the wards are available on the official site of Nagoya City.

No.	Facility Name (Marked as □)	Address	Designated Emergency Evacuation Site Flood / Inland flooding / Landslide
[1]	Oomori Elementary School	401 Oomori 4-chome	○
[2]	Oomori Junior High School	2601 Oomori 1-chome	○
[3]	Oomori Community Center	206-1 Oomori 4-chome	○
[4]	Oomori Kita Elementary School	321 Gozembora	○
[5]	Oomori Kita Community Center	319-1 Oomori 5-chome	○
[6]	Amakoda Elementary School	1501 Amakoda 2-chome	2nd floor or higher
[7]	Amakoda Community Center	1605 Mukaedai 2-chome	○
[8]	Moritaka Nishi Elementary School	1108 Moritaka 1-chome	○
[9]	Moritaka Junior High School	405 Shikenyu 2-chome	2nd floor or higher
[10]	Moritaka Nishi Community Center	201 Moritaka 3-chome	○
[11]	Honjigaoka Elementary School	908 Honjigaoka	○
[12]	Honjigaoka Community Center	801 Honjigaoka	○
[13]	Moritaka Higashi Elementary School	442 Moritaka Higashi 1-chome	2nd floor or higher
[14]	Moritaka Higashi Community Center	501-3 Hakusan 4-chome	○
[15]	Obata Elementary School	3-4 Obata 1-chome	○
[16]	Moriyama Higashi Junior High School	7-3 Obata 5-chome	○
[17]	Obata Community Center	3-7 Obata 2-chome	○
[18]	Obata Kita Elementary School	1801 Obata Kita	○
[19]	Obata Kita Community Center	867 Midorigaoka	○
[20]	Moriyama Sports Center	112 Ryusenji 2-chome	2nd floor or higher
[21]	Suishoen Meeting House	704 Suishoen 1-chome	○
[22]	Naeshiro Elementary School	10-6 Naeshiro 2-chome	2nd floor or higher
[23]	Naeshiro Community Center	19-12 Obata Minami 1-chome	○
[24]	Obata Asahi Kindergarten	5-9 Obata Minami 2-chome	○
[25]	Moriyama Elementary School	6-27 Nishijima-cho	○
[26]	Moriyama Junior High School	13-63 Ooyashiki	○
[27]	Moriyama Lifelong Learning Center	2-6 Moriyama 3-chome	○
[28]	Moriyama Hall	19-14 Nishijima-cho	2nd floor or higher
[29]	Nijo Elementary School	248 Torigami-cho	3rd floor or higher
[30]	Moriyama Nishi Junior High School	58 Shimmori-cho	3rd floor or higher
[31]	Shirasawa Elementary School	233 Shirasawa-cho	2nd floor or higher
[32]	Moriyama Kita Junior High School	116-1 Matsusaka-cho	○
[33]	Shirasawa Community Center	1 Shiotsuchi-cho	○
[34]	Nijikkenya Elementary School	16-16 Sarayashiki	2nd floor or higher
[35]	Nijikkenya Hall	14-56 Nijikkenya	2nd floor or higher
[36]	Toribami Elementary School	17-6 Tobami 2-chome	3rd floor or higher
[37]	Seko Elementary School	1303 Seko Higashi 3-chome	3rd floor or higher
[38]	Moriyama Water Treatment Center	3-1 Komegase-cho	3rd floor or higher
[39]	Shidami Higashi Elementary School	323-2 Aza-doko, Kami Shidami	2nd floor or higher
[40]	Shidami Higashi Community Center	1175-1 Aza-miyamae, Nakashidami	○
[41]	Nakashidami Nursery School	1174 Aza-miyamae, Nakashidami	○
[42]	Shidami Nishi Elementary School	177 Fukasawa 2-chome	○
[43]	Shidami Nishi Community Center	1001 Izumigaoka	○
[44]	Kikko Elementary School	1601 Kikko 1-chome	2nd floor or higher
[45]	Kikko Community Center	1705 Kikko 2-chome	○
[46]	Kikko Junior High School	102 Sasagane 2-chome	○
[47]	Shimo Shidami Elementary School	1825 Aza-shimomoguchi, Shimo Shidami	○
[48]	Shidami Junior High School	1402 Aza-yokotsuzumi, Shimo Shidami	○
[49]	Shidami District Hall	1390-1 Aza-yokotsuzumi, Shimo Shidami	○
[50]	Shidami Sportsland	2287-1 Aza-haesagari, Shimo Shidami	○
[51]	Shimo Shidami Community Center	1659 Aza-nagato, Shimo Shidami	○
[52]	Togokusan Fruits Park	2110-353 Aza-togoku, Kami Shidami	○
[53]	Kami Shidami Elementary School	1220-2 Aza-otsuka, Kami Shidami	○

Evacuation to Designated Emergency Evacuation Site

○ Please evacuate a Designated Emergency Evacuation Site according to the disaster type when you are at risk from disasters (especially when evacuation information (evacuation instructions) is issued) and unable to protect your life, at home. ○ If you voluntarily evacuate regardless of evacuation instructions, please contact the ward office and confirm the evacuation site is safe.

Nagoya City Disaster Countermeasures Office / Moriyama Ward Headquarters (Moriyama Ward Office)
Tel: 793-3434 (Main) 796-4511 ~ 6 (Direct) Fax: 794-2256

Civil Services (Marked as □)

[A] Moriyama Ward Office [E] Moriyama Fire Station Morinishi Branch
[B] Moriyama Ward Office Shidami Branch [F] Moriyama Fire Station Oomori Branch
[C] Moriyama Fire Station [G] Moriyama Public Works Office
[D] Moriyama Fire Station Shidami Branch

Legend

[0] Designated Emergency Evacuation Site Where people can temporarily evacuate themselves from disaster risks to protect their lives
Underpass Where the roads are flooded and closed off in case of heavy rain
Landslide Disaster (Special) Warning Zone Area where landslide disaster is likely to occur
Ward boundary School district boundary (School district boundaries are rough estimates. Please contact the ward office for details.)
Designated Emergency Evacuation Site outside the ward

This map was created based on the City Planning Basic Map created in 2015 and 2016. A part of the map has been modified after the creation where necessary. As for the maps of Seto City, Kasugai City, Toyama-cho, Nagakute City, and Owari-asahi City, the City Planning Basic Map is used under the approvals of the municipalities. (Approval numbers - Seto City: 3瀬都計165, Kasugai City: 3春都計161, Toyama-cho: 3豊防規61, Nagakute City: 3長都計162, Owari-asahi City: Reiwo3, 1) Landslide Disaster Hazard Map, Aichi Prefecture, Creative Commons License Attribution 2.1 Japan (<http://creativecommons.org/licenses/by/2.1/jp/>)

(Descriptions)

• Flood related information illustrated in the map is calculated by simulating immersion areas, flood depth, and flood duration assumed in case of sewer and small and medium-sized river (rivers unexpected to flood in the Flood Hazard Map) floods due to the maximum possible rainfall (156mm/h, 83mm/24h), considering the development status of facilities as of the end of FY2020.
• The simulations consider shutdown of drain pumps and closing of sluice gates associated with river level rise.
• Immersion areas, flood depth, and flood duration are only assumptions and they may largely exceed the assumptions depending on various conditions.
• The map has been created based on the results of simulations conducted by Nagoya City.

Estimate of water level

