

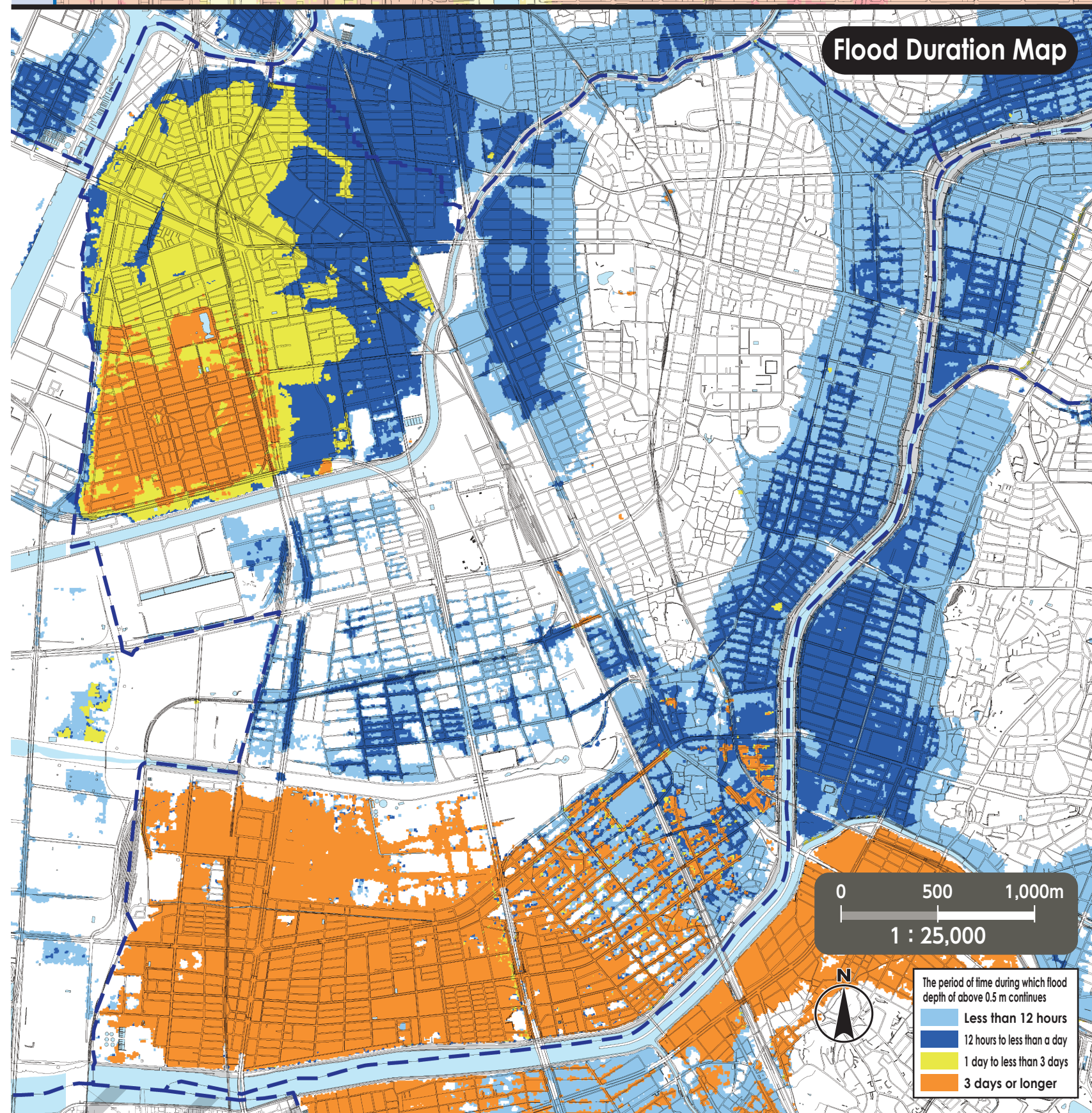
As of June, 2022



Inland flooding

Hazard Map

Minami Ward



*For availability of evacuation to Designated Emergency Evacuation Sites in other wards, see the Hazard Maps of the wards. Hazard Maps of all the wards are available on the official site of Nagoya City.

No.	Facility Name (Marked as □)	Address	Designated Emergency Evacuation Site Flood / Inland flooding / Landslide
[1]	Meiji Elementary School	3-50 Meiji 2-chome	2nd floor or higher
[2]	Meiji Community Center	14-1 Meiji 2-chome	2nd floor or higher
[3]	Temma Elementary School	38-9 Yutaka 2-chome	2nd floor or higher
[4]	Meiho Junior High School	39-3 Yutaka 2-chome	2nd floor or higher
[5]	Temma Community Center	37-8 Yutaka 1-chome	2nd floor or higher
[6]	Toyoda Elementary School	19-23 Toyoda 1-chome	2nd floor or higher
[7]	Toyoda Community Center	9-19 Toyoda 4-chome	2nd floor or higher
[8]	Dotoku Elementary School	5-43 Dotoku-shimmachi	2nd floor or higher
[9]	Ooe Junior High School	5-48 Dotoku-shimmachi	2nd floor or higher
[10]	Community Center Dotoku	2-72 Dotoku-dori	2nd floor or higher
[11]	Dotoku Nursery School	6-20 Kannon-cho	2nd floor or higher
[12]	Tobitsugi Elementary School	17-10 Yobitsugi 4-chome	○
[13]	Shinko Junior High School	4-8 Yobitsugi 4-chome	○
[14]	Yobitsugi Community Center	4-60 Yobitsugi 4-chome	○
[15]	Ooiso Elementary School	5-1 Kitauchi-cho	2nd floor or higher
[16]	Ooiso Community Center	3-25 Kitauchi-cho	2nd floor or higher
[17]	Sakura Elementary School	13-38 Sakuradai 2-chome	○
[18]	Sakurada Junior High School	4-52 Nakae 1-chome	2nd floor or higher
[19]	Sakura Community Center	15-4 Sakuradai 2-chome	○
[20]	Kikuzumi Elementary School	12-37 Kakeage 1-chome	○
[21]	Tsukihiko Okamichi Church Headquarters	7-14 Hirako 2-chome	2nd floor or higher
[22]	Kikuzumi Community Center	14-13 Kakeage 1-chome	○
[23]	Kasugano Elementary School	9-1 Kasugano-cho	○
[24]	Sakuradai High School	21 Kasumi-cho	○
[25]	Kasugano Community Center	77 Kasumi-cho	○
[26]	Kasadera Elementary School	765 Aza-honjo, Motahoshizaki-cho	○

No.	Facility Name (Marked as □)	Address	Designated Emergency Evacuation Site Flood / Inland flooding / Landslide
[27]	Honjo Junior High School	3-1 Toriyama-cho	○
[28]	Prefectural Nagoya Technology High School	1 Ahara-cho	2nd floor or higher
[29]	Kasadera Community Center	5-2-31 Maehama-dori	○
[30]	Hoshizaki Elementary School	163 Minamino 3-chome	2nd floor or higher
[31]	Hoshizaki Community Center	52 Hoshizaki 1-chome	2nd floor or higher
[32]	Ryuto Elementary School	113 Shiba-cho	2nd floor or higher
[33]	Ryuto Community Center	57 Hakuun-cho	2nd floor or higher
[34]	Taisei Elementary School	3-76 Nishi Matabe-cho	2nd floor or higher
[35]	Taisei Fureai Center	4-8-1 Nishi Matabe-cho	2nd floor or higher
[36]	Prefectural Nagoya Minami High School	5-1-11 Higashi Matabe-cho	○
[37]	Minami Lifelong Learning Center	5-1-10 Higashi Matabe-cho	2nd floor or higher
[38]	Nippongaishi Sports Plaza	5-1-16 Higashi Matabe-cho	○
[39]	Takara Elementary School	2-5 Nakawari-cho	2nd floor or higher
[40]	Takara Community Center	2-2 Hoshio-cho	2nd floor or higher
[41]	Honon Elementary School	3-48 Kitatsumiokoshi-cho	2nd floor or higher
[42]	Nanko Junior High School	4-119 Hamada-cho	2nd floor or higher
[43]	Honon Community Center	1-20-6 Motoshio-cho	2nd floor or higher
[44]	Hakusui Elementary School	2-1 Matsushita-cho	2nd floor or higher
[45]	Daido University Daido Senior High School	2-21 Daido-cho	2nd floor or higher
[46]	Hakusui Community Center	3023-3 Aza-tange, Naruo-cho	2nd floor or higher
[47]	Chidori Elementary School	6-1 Miyoshi-cho	2nd floor or higher
[48]	Meinan Junior High School	5-43 Miyoshi-cho	2nd floor or higher
[49]	Chidori Community Center	4-22 Tempaku-cho	2nd floor or higher
[50]	Shibata Elementary School	19 Hakusui-cho	2nd floor or higher
[51]	Tsudoino-yakata Wako	2-20-2 Motoshibata-higashimachi	2nd floor or higher
[52]	Daido University	10-3 Takiharu-cho	2nd floor or higher

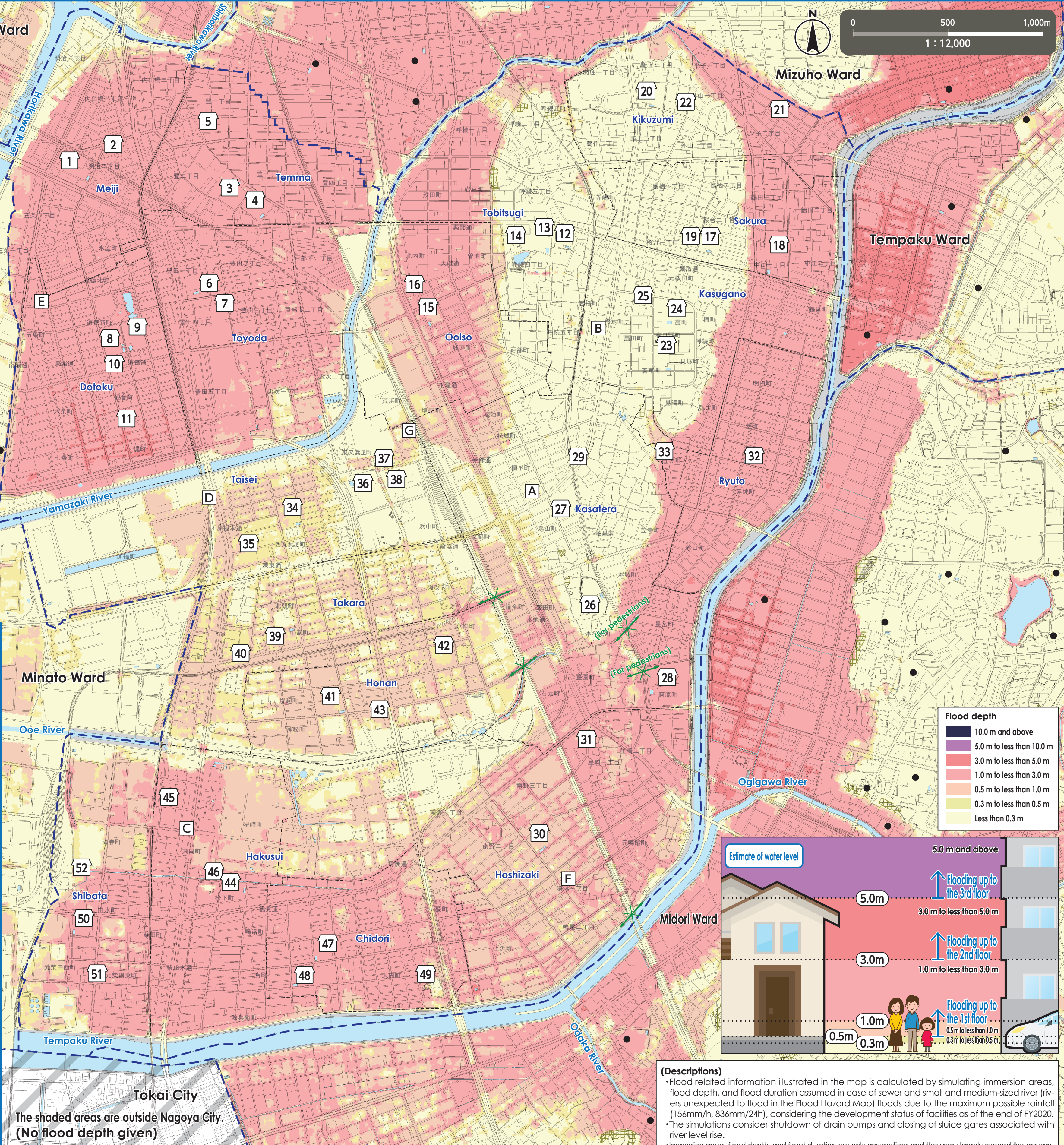
Evacuation to Designated Emergency Evacuation Site

○ Please evacuate a Designated Emergency Evacuation Site according to the disaster type when you are at risk from disasters (especially when evacuation information (evacuation instructions) is issued) and unable to protect your life, at home.
○ If you voluntarily evacuate regardless of evacuation instructions, please contact the ward office and confirm the evacuation site is safe.

Nagoya City Disaster Countermeasures Office / Minami Ward Headquarters (Minami Ward Office) Tel: 811-5161 (Main) 823-9311~6 (Direct) Fax: 811-6360

Civil Services (Marked as □)	
[A] Minami Ward Office	[E] Minami Fire Station Dotoku Branch
[B] Minami Fire Station	[F] Minami Fire Station Hoshizaki Branch
[C] Minami Fire Station Daido Branch	[G] Minami Public Works Office
[D] Minami Fire Station Oe Branch	

Legend	
[10] Designated Emergency Evacuation Site Where people can temporarily evacuate themselves from disaster risks to protect their lives	Ward boundary
Underpass Where the roads are flooded and closed off in case of heavy rain	School district boundary (School district boundaries are rough estimates. Please contact the ward office for details.)
Landslide Disaster (Special) Warning Zone Area where landslide disaster is likely to occur	Designated Emergency Evacuation Site outside the ward



The shaded areas are outside Nagoya City.
(No flood depth given)

This map was created based on the City Planning Basic Map created in 2015 and 2016. A part of the map has been modified after the creation where necessary.
As for the map of Tokai City, the City Planning Basic Map is used under the approvals of the city. (Approval number - Tokai City: 都29)
Landslide Disaster Hazard Map, Aichi Prefecture, Creative Commons License Attribution 2.1 Japan (<http://creativecommons.org/licenses/by/2.1/jp/>)

(Descriptions)

- Flood related information illustrated in the map is calculated by simulating immersion areas, flood depth, and flood duration assumed in case of sewer and small and medium-sized river (rivers unexpected to flood in the Flood Hazard Map) floods due to the maximum possible rainfall (156mm/h, 836mm/24h), considering the development status of facilities as of the end of FY2020.
- The simulations consider shutdown of drain pumps and closing of sluice gates associated with river level rise.
- Immersion areas, flood depth, and flood duration are only assumptions and they may largely exceed the assumptions depending on various conditions.
- The map has been created based on the results of simulations conducted by Nagoya City.

