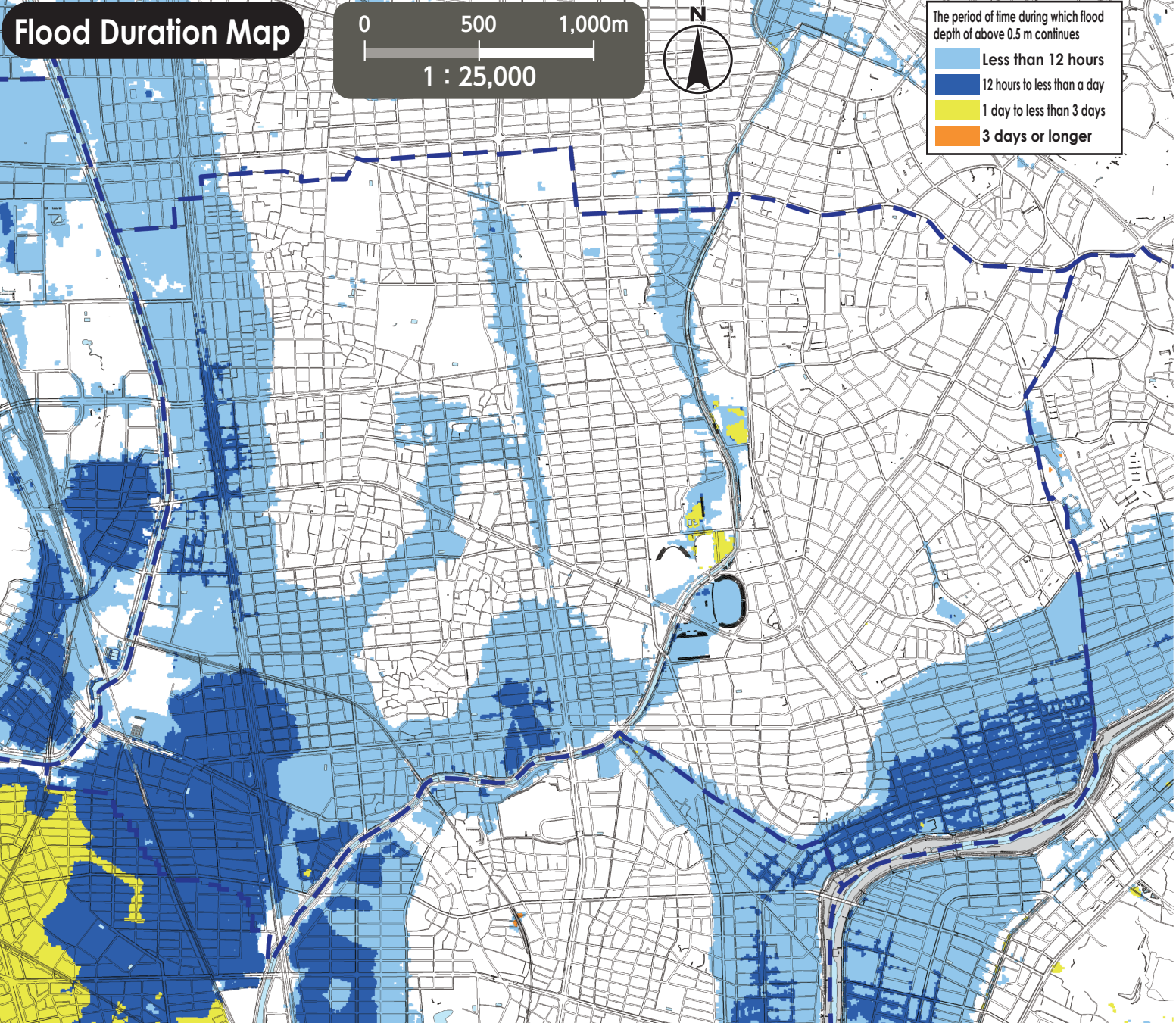
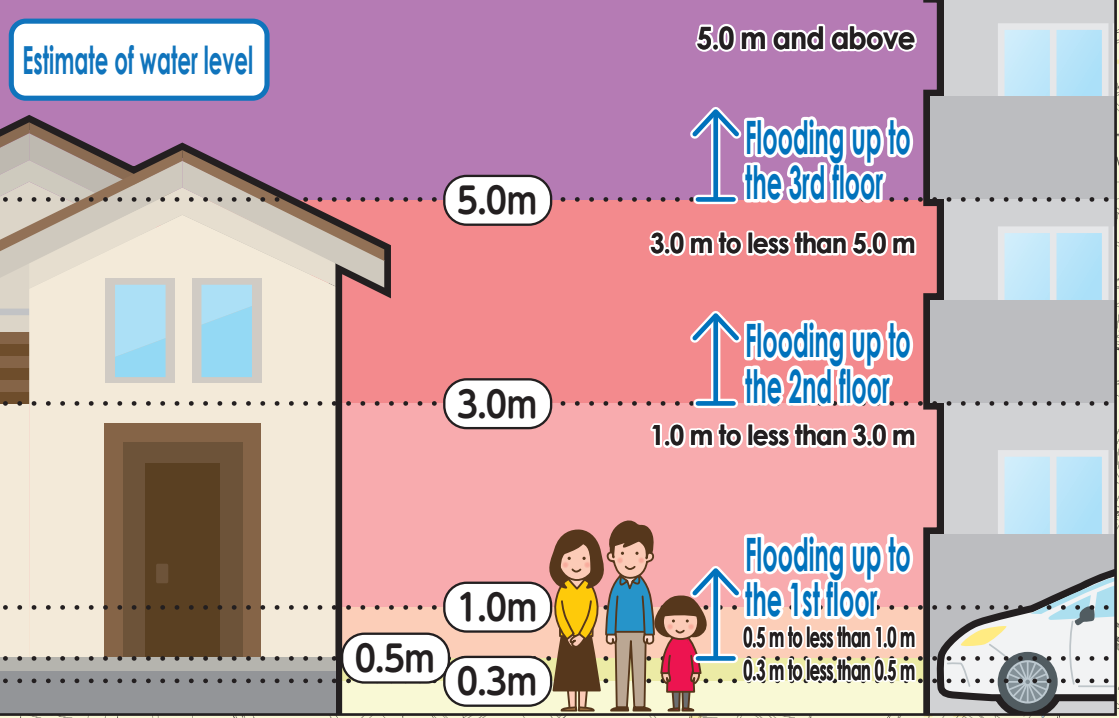
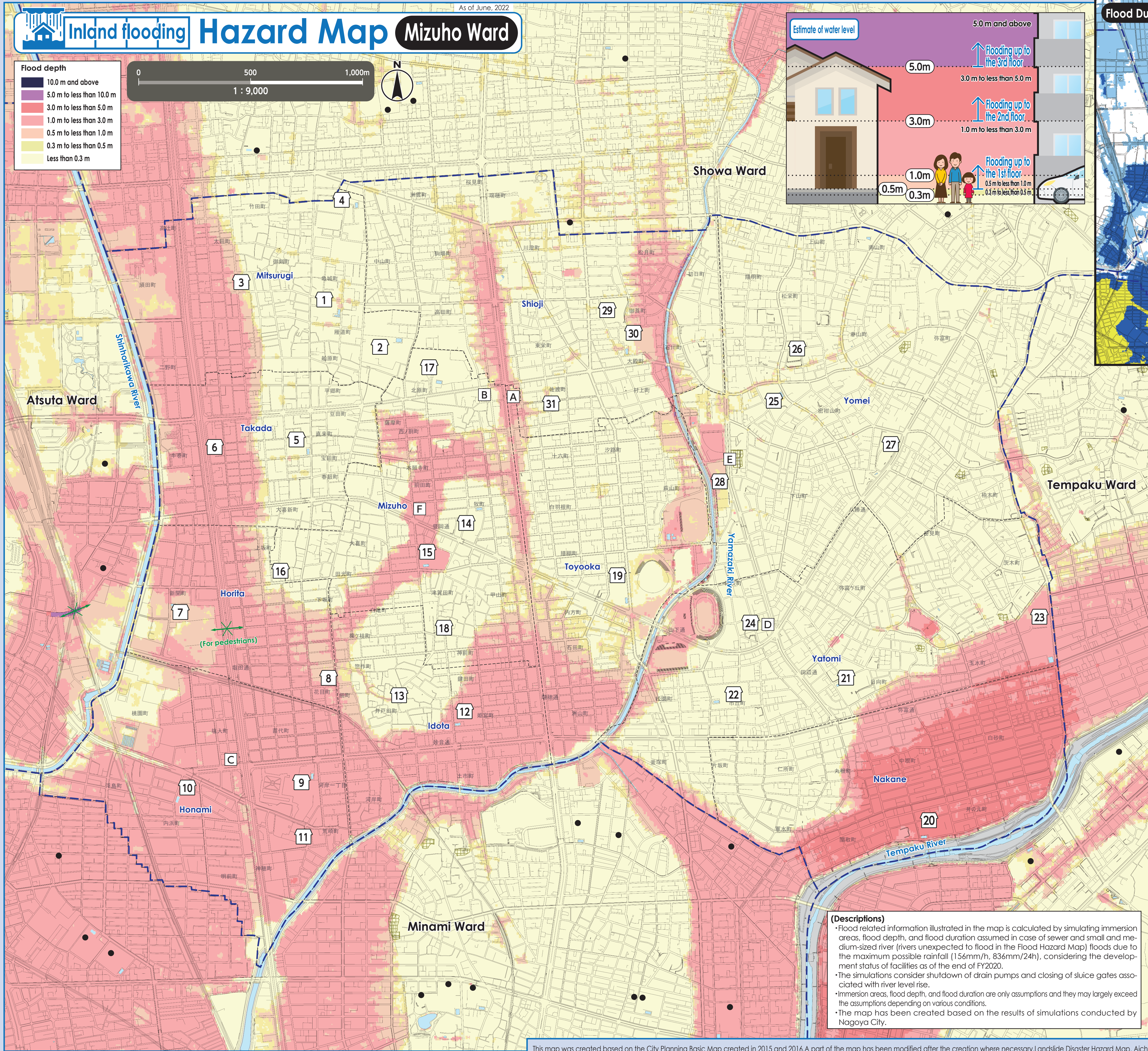
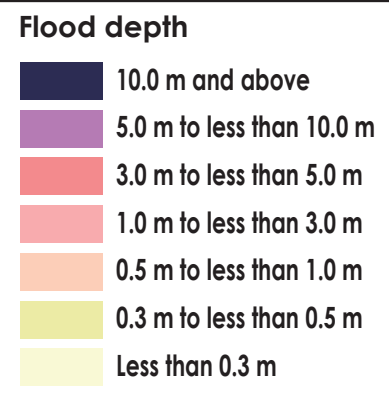


Inland flooding Hazard Map Mizuho Ward



*For availability of evacuation to Designated Emergency Evacuation Sites in other wards, see the Hazard Maps of the wards. Hazard Maps of all the wards are available on the official site of Nagoya City.

No.	Facility Name (Marked as □)	Address	Designated Emergency Evacuation Site Flood / Inland Flooding / Landslide
[1]	Mitsurugi Elementary School	5-4-1 Kameshiro-cho	○
[2]	Mizuhogaoka Junior High School	3-28 Takata-cho	○
[3]	NGK Insulators Mizuho-kaikan	2-4 Kameshiro-cho	2nd floor or higher
[4]	Nagoya City University Takiko (Yamanohata) Campus (gymnasium)	1 Aza-yamanohata, Mizuho-cho	○
[5]	Takada Elementary School	4-1 Hoden-cho	○
[6]	Takada Community Center	1-7-1 Naorai-cho	2nd floor or higher
[7]	Horita Elementary School	24-13 Shinkai-cho	2nd floor or higher
[8]	Mizuho Lifelong Learning Center	2-27-3 Sosaku-cho	2nd floor or higher
[9]	Honami Elementary School	1-38 Kawagishi 1-chome	2nd floor or higher
[10]	Tako Junior High School	5-16 Uchihama-cho	2nd floor or higher
[11]	Honami Community Center	5-18 Kamiho-cho	2nd floor or higher
[12]	Idota Elementary School	1-46 Himemiya-cho	2nd floor or higher
[13]	Idota Community Center	3-25-1 Idota-cho	○
[14]	Mizuho Elementary School	2-46 Maki-cho	○
[15]	Tsukata Junior High School	1-38 Tsukata-cho	2nd floor or higher
[16]	Segi Gakuen (gymnasium)	1-37 Daigi-cho	○
[17]	Prefectural Zuiyo High School (gymnasium)	2-1 Kitahara-cho	○
[18]	Mizuho Community Center	3-83-1 Tsukata-cho	○
[19]	Toyooka Elementary School	3-60 Zendana-cho	○
[20]	Nakane Elementary School	50 Inomoto-cho	3rd floor or higher
[21]	Yatomi Elementary School	4-23-1 Hinata-cho	○
[22]	Hagiya Junior High School	1-48 Ichioka-cho	○
[23]	Prefectural Showa High School	1-18 Tamamizu-cho	2nd floor or higher
[24]	Yatomi Community Center	82-2 Moronaga-cho	○
[25]	Yomei Elementary School	1-1 Mikanyama-cho	○
[26]	Yomei Community Center	2-46 Matsusaka-cho	○
[27]	Nagoya City Rehabilitation Center	1-2 Azo-mikanyama, Yatomi-cho	○
[28]	Paloma Mizuho Arena	3-4 Tanabe-dori	2nd floor or higher
[29]	Shioji Elementary School	1-2 Otabako-cho	○
[30]	Shioji Junior High School	4-16 Otabako-cho	2nd floor or higher
[31]	Shioji Community Center	4-9 Sawatari-cho	○

Evacuation to Designated Emergency Evacuation Site

○ Please evacuate a Designated Emergency Evacuation Site according to the disaster type when you are at risk from disasters (**especially when evacuation information (evacuation instructions) is issued**) and unable to protect your life, at home.
○ If you voluntarily evacuate regardless of evacuation instructions, please contact the ward office and confirm the evacuation site is safe.

Nagoya City Disaster Countermeasures Office / Mizuho Ward Headquarters (Mizuho Ward Office)
Tel: 841-1521 (Main) 852-9212~7 (Direct) Fax: 851-3317

Civil Services (Marked as □)	
[A] Mizuho Ward Office	[C] Mizuho Fire Station Horita Branch
[B] Mizuho Fire Station	[D] Emergency Task Forces 4
[E] Mizuho Public Works Office	[F] Waterworks & Sewerage Bureau Mizuho Branch Office

Legend	
[0] Designated Emergency Evacuation Site	Where people can temporarily evacuate themselves from disaster risks to protect their lives
Underpass	Where the roads are flooded and closed off in case of heavy rain
Landslide Disaster (Special) Warning Zone	Area where landslide disaster is likely to occur
Ward boundary	School district boundary (School district boundaries are rough estimates. Please contact the ward office for details.)
Designated Emergency Evacuation Site outside the ward	

(Descriptions)

- Flood related information illustrated in the map is calculated by simulating immersion areas, flood depth, and flood duration assumed in case of sewer and small and medium-sized river (rivers unexpected to flood in the Flood Hazard Map) floods due to the maximum possible rainfall (156mm/h, 836mm/24h), considering the development status of facilities as of the end of FY2020.
- The simulations consider shutdown of drain pumps and closing of sluice gates associated with river level rise.
- Immersion areas, flood depth, and flood duration are only assumptions and they may largely exceed the assumptions depending on various conditions.
- The map has been created based on the results of simulations conducted by Nagoya City.