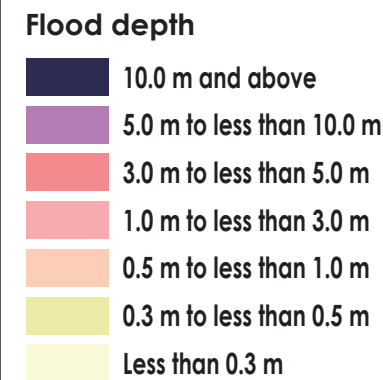
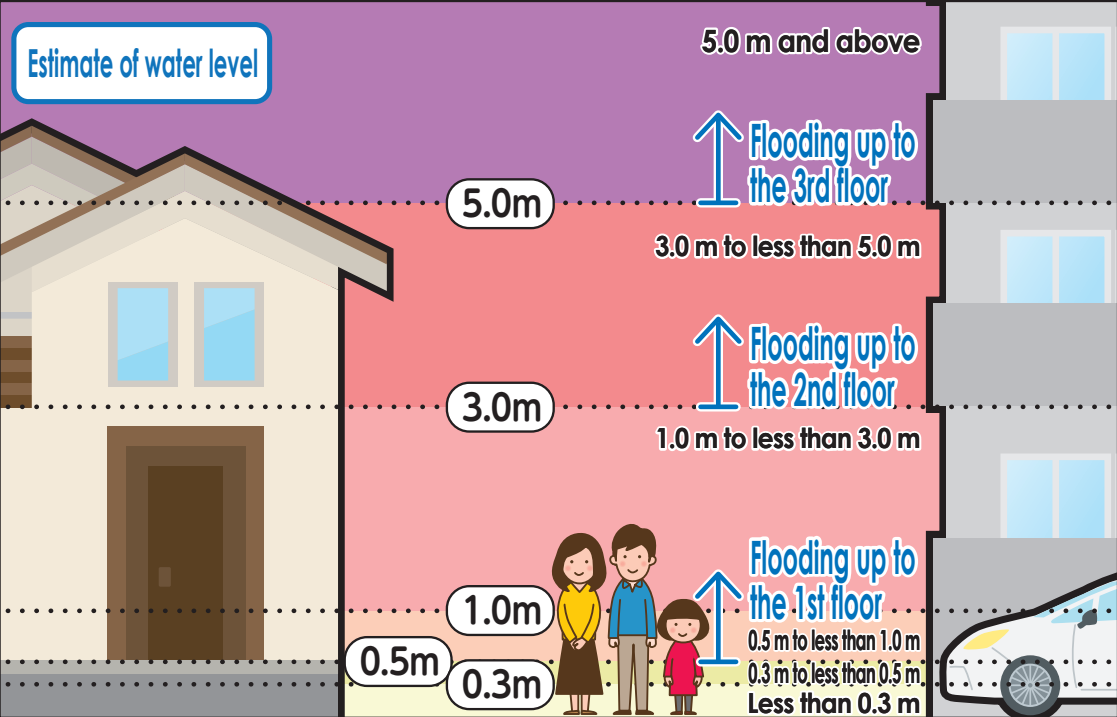


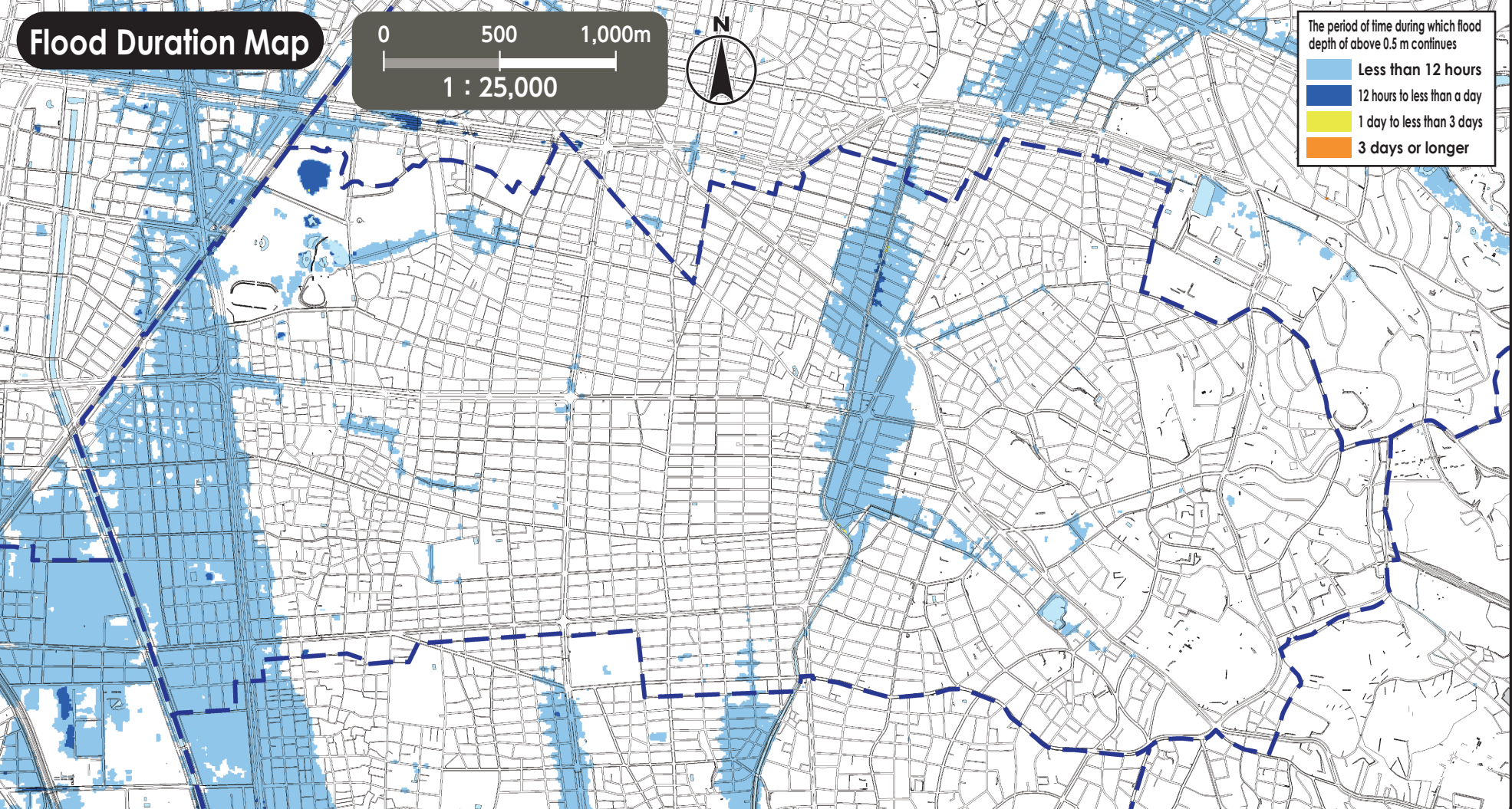
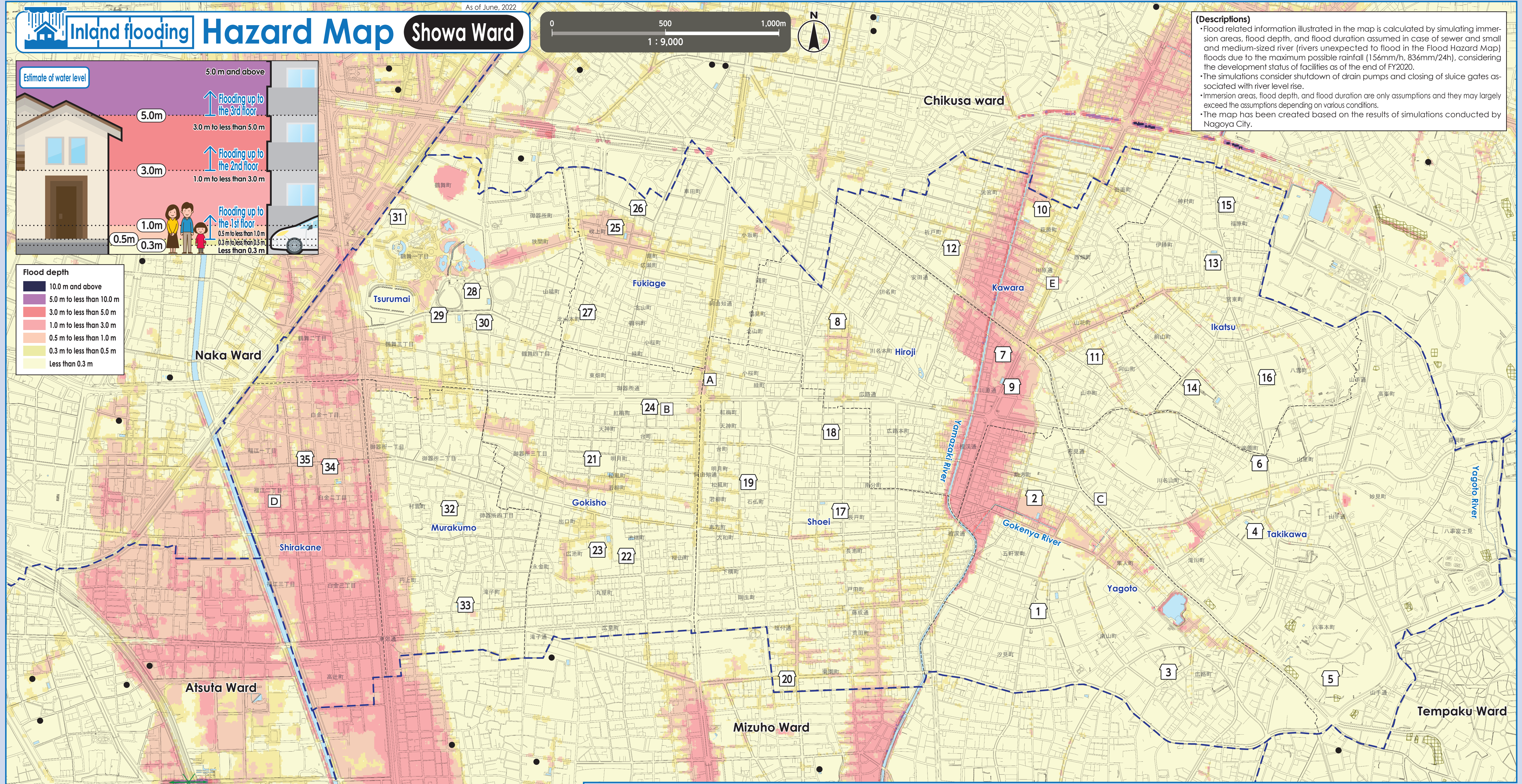
As of June, 2022

# Inland flooding Hazard Map Showa Ward

0 500 1,000m  
1 : 9,000



(Descriptions)  
• Flood related information illustrated in the map is calculated by simulating immersion areas, flood depth, and flood duration assumed in case of sewer and small and medium-sized river (rivers unexpected to flood in the Flood Hazard Map) floods due to the maximum possible rainfall (156mm/h, 836mm/24h), considering the development status of facilities as of the end of FY2020.  
• The simulations consider shutdown of drain pumps and closing of sluice gates associated with river level rise.  
• Immersion areas, flood depth, and flood duration are only assumptions and they may largely exceed the assumptions depending on various conditions.  
• The map has been created based on the results of simulations conducted by Nagoya City.



\*For availability of evacuation to Designated Emergency Evacuation Sites in other wards, see the Hazard Maps of the wards. Hazard Maps of all the wards are available on the official site of Nagoya City.

No.	Facility Name (Marked as □)	Address	Designated Emergency Evacuation Site Flood/ Inland flooding/Landslide
1	Yagoto Elementary School	25 Gokenya-cho	○
2	Komagata Junior High School	3-23 Komagata-cho	○
3	Yagoto Community Center	79 Aza-minamiyama, Hiroji-cho	○
4	Takikawa Elementary School	131 Takikawa-cho	○
5	Chukyo University	101-2 Yagoto-hommachi	○
6	Takikawa Community Center	46-4 Kawanayama-cho	○
7	Hiroji Elementary School	8-21-2 Kawahara-dori	2nd floor or higher
8	Hiroji Community Center	2-10-1 Kawana-hommachi	○
9	Nagoya City Showa Playhouse	1-41-2 Hanami-dori	2nd floor or higher
10	Kawahara Elementary School	2-1 Hagiwara-cho	2nd floor or higher
11	Kawahara Community Center	1-52-2 Mukaiyama-cho	○
12	Child Welfare Center	4-16 Orido-cho	○
13	Ikatsu Elementary School	2-100 Ikatsu-cho	○
14	Kawana Junior High School	93 Rakuen-cho	○
15	Ikatsu Community Center	1-38 Fukuhara-cho	○
16	Nanzan University	18 Yamazato-cho	○
17	Shoei Elementary School	2-1 Nagato-cho	○
18	NUCB International Junior & Senior High School	1-16 Hiroji-hommachi	○
19	Showa Lifelong Learning Center	1-48 Ishibotoke-cho	○

No.	Facility Name (Marked as □)	Address	Designated Emergency Evacuation Site Flood/ Inland flooding/Landslide
20	Shoei Community Center	1-12 Kikuzono-cho	○
21	Gokisho Elementary School	1-32 Meigetsu-cho	○
22	Sakurayama Junior High School	1-15 Ikebata-cho	○
23	Koyo Senior High School	47 Hiroike-cho	○
24	Gokiso Community Center	2-15-2 Kobai-cho	○
25	Fukiage Elementary School	1-22 Fukiage-cho	2nd floor or higher
26	Showa Sports Center	6-15 Fukiage 2-chome	○
27	Fukiage Community Center	1-9-1 Tsuruha-cho	○

No.	Facility Name (Marked as □)	Address	Designated Emergency Evacuation Site Flood/ Inland flooding/Landslide
28	Tsurumai Elementary School	1-85 Tsurumai 1-chome	○
29	Kitayama Junior High School	9-23 Tsurumai 3-chome	○
30	Tsuruyama Community Center	2-25 Tsurumai 4-chome	○
31	Nagoya Civic Assembly Hall	1-3 Tsurumai 1-chome	○
32	Murakuma Elementary School	26-16 Murakuma-cho	○
33	Enjo Junior High School	17-18 Takiko-cho	○
34	Shirakane Elementary School	2-5 Shirakane 2-chome	2nd floor or higher
35	Shirakane Community Center	20-18 Shirakane 1-chome	2nd floor or higher

## Evacuation to Designated Emergency Evacuation Site

Please evacuate a Designated Emergency Evacuation Site according to the disaster type when you are at risk from disasters (especially when evacuation information (evacuation instructions) is issued) and unable to protect your life, at home. If you voluntarily evacuate regardless of evacuation instructions, please contact the ward office and confirm the evacuation site is safe.  
Nagoya City Disaster Countermeasures Office / Showa Ward Headquarters (Showa Ward Office) Tel: 731-1511 (Main) 735-3811~5 (Direct) Fax: 733-5534

Legend	
0 Designated Emergency Evacuation Site Where people can temporarily evacuate themselves from disaster risk to protect their lives	Ward boundary
Underpass Where the roads are flooded and closed off in case of heavy rain	School district boundary (School district boundaries are rough estimates. Please contact the ward office for details.)
Landslide Disaster (Special) Warning Zone Area where landslide disaster is likely to occur	Designated Emergency Evacuation Site outside the ward

## Civil Services (Marked as □)

- A Showa Ward Office
- B Showa Fire Station
- C Showa Fire Station Yagoto Branch
- D Showa Fire Station Shirakane Branch
- E Showa Public Works Office

This map was created based on the City Planning Basic Map created in 2015 and 2016. A part of the map has been modified after the creation where necessary. Landslide Disaster Hazard Map, Aichi Prefecture, Creative Commons License Attribution 2.1 Japan (<http://creativecommons.org/licenses/by/2.1/jp/>)