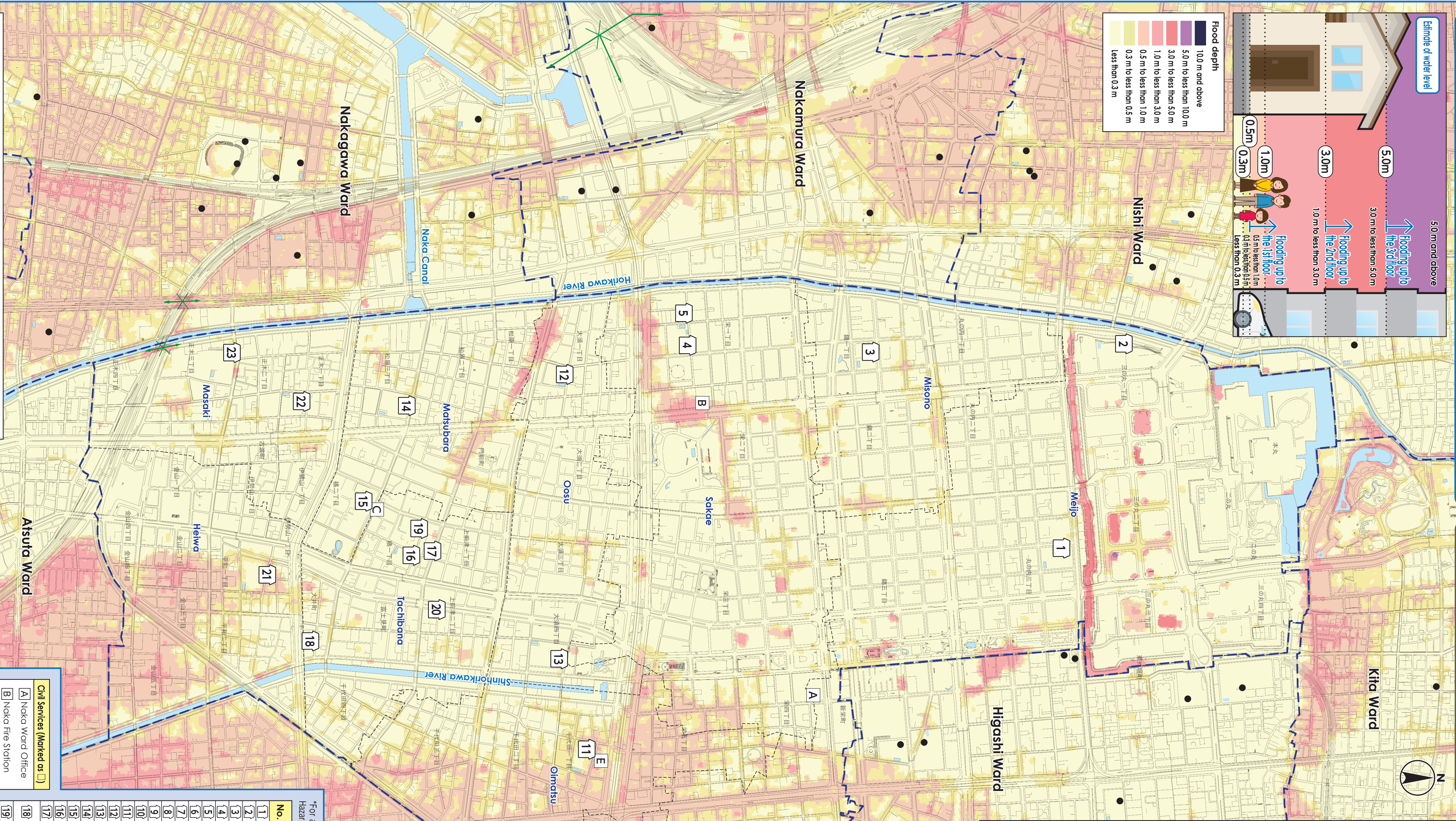
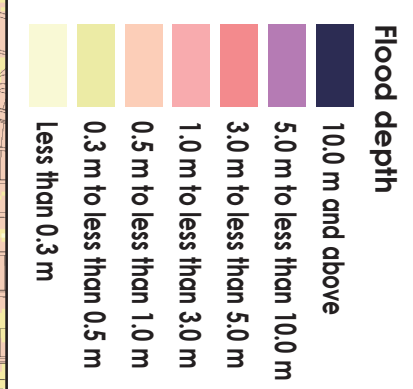
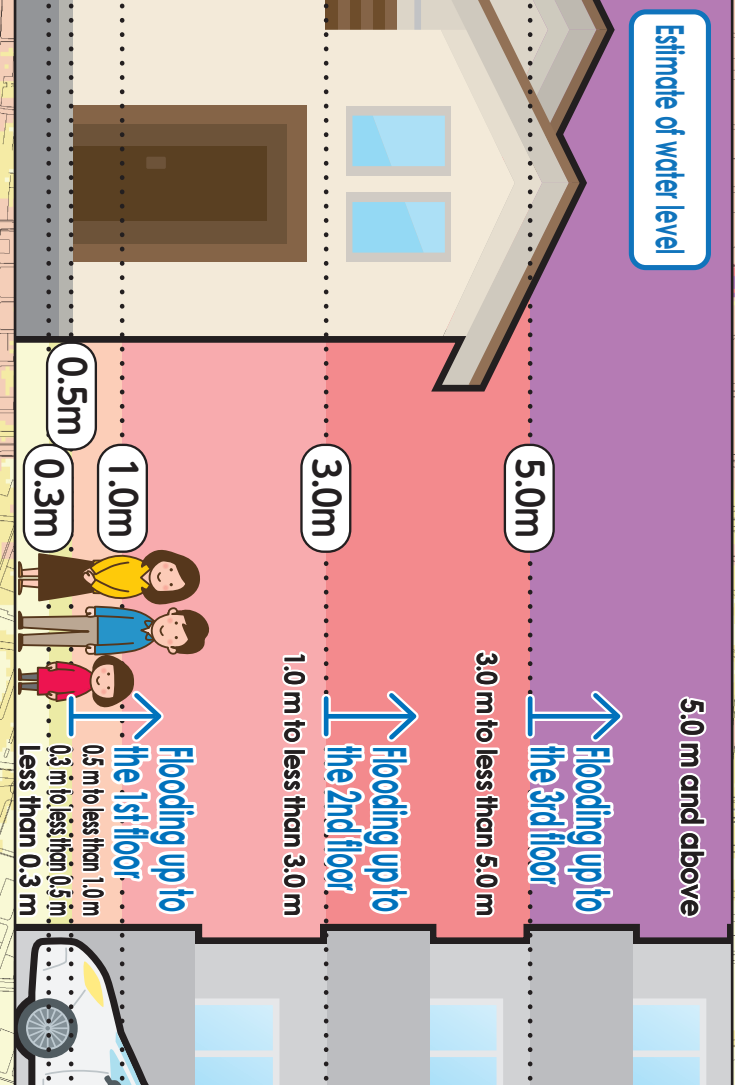
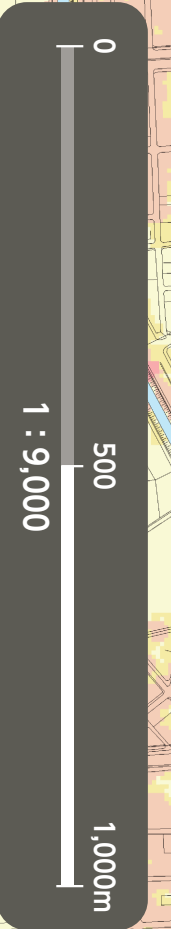


As of June 2022

Inland flooding Hazard Map Nakagawa Ward



(Descriptions)

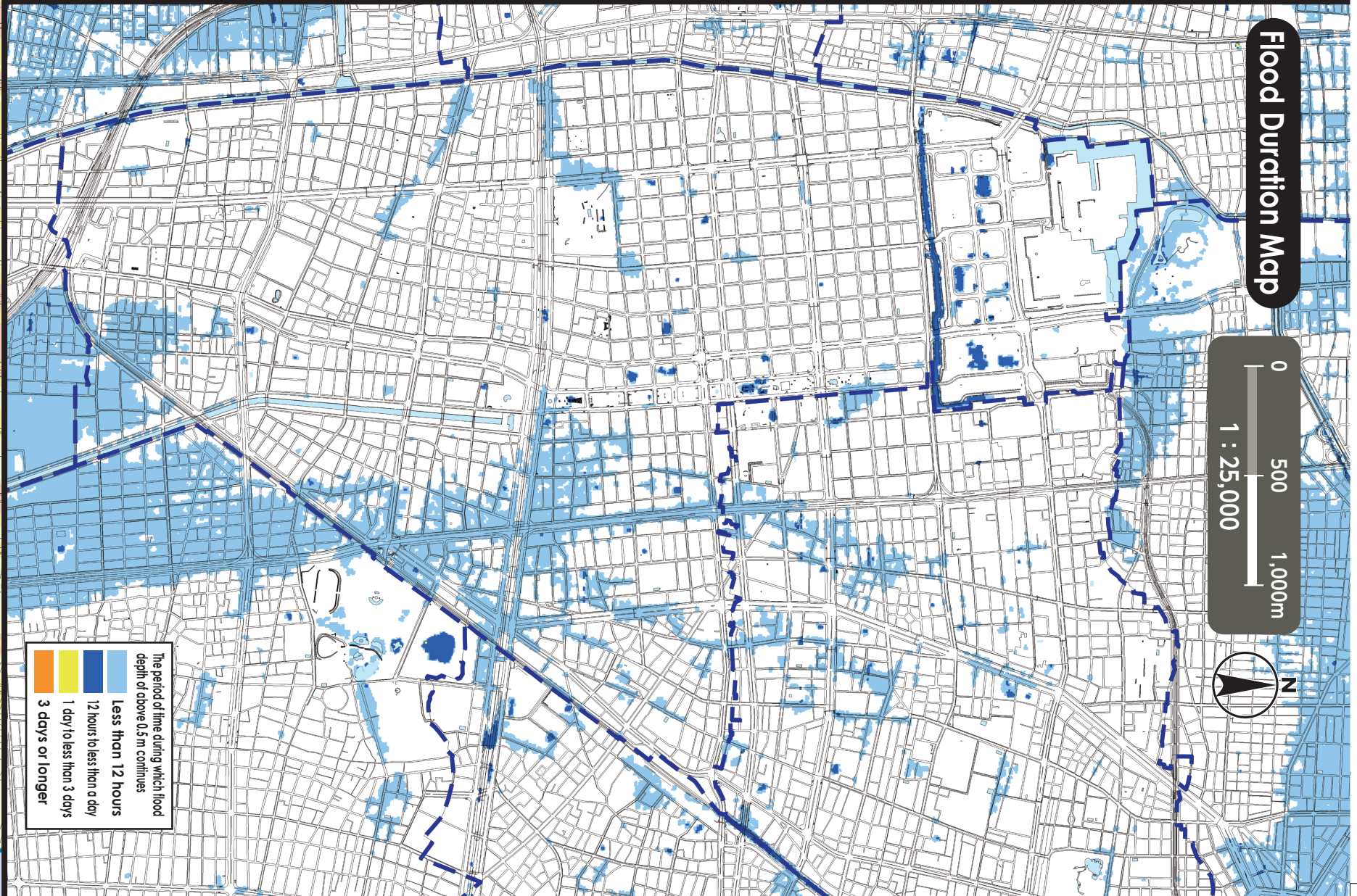
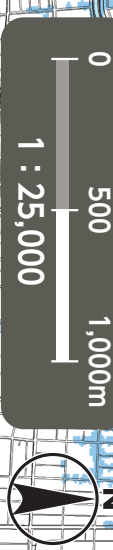
•Flood related information illustrated in the map is calculated by simulating immersion areas, flood depth, and flood duration assumed in case of sewer and small and medium-sized river (rivers unex-pected to flood in the Flood Hazard Map) floods due to the maximum possible rainfall (156mm/h, 834mm/24h), considering the development status of facilities as of the end of FY2020.

•The simulations consider shutdown of drain pumps and closing of sluice gates associated with river level rise.

•Immersion areas, flood depth, and flood duration are only assumptions and they may largely exceed the assumptions depending on various conditions.

•The map has been created based on the results of simulations conducted by Nagoya City.

Flood Duration Map



*For availability of evacuation to Designated Emergency Evacuation Sites in other wards, see the Hazard Maps of the wards Hazard Maps of all the wards are available on the official site of Nagoya City.

No.	Facility Name (Marked as □)	Address	Designated Emergency Evacuation Site (Flood /Inland flooding)
1	Meijo Elementary School	3-35 Marunouchi 3-chome	○
2	Marunouchi Junior High School	9-2 Sammaru 1-chome	○
3	Misoro Elementary School	9-1 Nishiki 1-chome	○
4	Sakae Elementary School	28-1 Sakae 1-chome	○
5	Naka Sports Center	30-10 Sakae 1-chome	○
6	Shinsakae Elementary School	15-51 Shinsakae 3-chome	○
7	Hokusan Junior High School	15-56 Shinsakae 1-chome	○
8	Nagoya City Naka Culture Center	32-13 Shinsakae 3-chome 2nd floor or higher	○
9	Chihaya Elementary School	44-36 Shinsakae 1-chome	○
10	Chihaya Community Center	48-16 Shinsakae 1-chome	○
11	Oimatsu Elementary School	9-36 Chiyoda 1-chome	○
12	Osu Elementary School	31-4 Osu 1-chome	○
13	Maestu Junior High School	8-88 Osu 4-chome	○
14	Matsubara Elementary School	5-3 Matsubara 3-chome	○
15	Shinshu Otaniha Nagoya-Betsuin (Higashi Betsuin)	8-55 Tachibana 2-chome	○
16	Tachibana Elementary School	13-12 Tachibana 1-chome	○
17	Naka Lifelong Learning Center	7-11 Tachibana 1-chome	○
18	Nagoya City Gender Equality Promotion Center/ Nagoya City Women's Center (Cable Nagoya)	7-25 Ooi-cho	○
19	Tachibana Community Center	14-4 Tachibana 1-chome	○
20	Biyo Aichi Hall	10-28 Komimaezu 2-chome	○
21	Heiwa Elementary School	14-3 Heiwa 1-chome	○
22	Masaki Elementary School	17-33 Masaki 1-chome	○
23	Iseiyama Junior High School	2-21 Masaki 3-chome	○

Evacuation to Designated Emergency Evacuation Site

Of these evacuate a Designated Emergency Evacuation Site according to the disaster type when you are at risk from disasters **(Especially when evacuation information (evacuation instructions) is issued)** and unable to protect your life at home.

Of You voluntarily evacuate regardless of evacuation instructions, please contact the ward office and confirm the evacuation site is safe.

Nagoya City Disaster Countermeasures Office (Naka Ward Headquarters (Naka Ward Office)) TEL: 251-2215 FAX:261-0535

Legend

[0]	Designated Emergency Evacuation Site	Where people can temporarily evacuate (marked with a triangle) (the map shows the location of the site)
—	Underpass	Where the roads are flooded and closed off in case of heavy rain
—	Ward boundary	School district boundaries are rough estimates. Please contact the ward office for details.
—	School district boundary	
●	Designated Emergency Evacuation Site outside the ward	