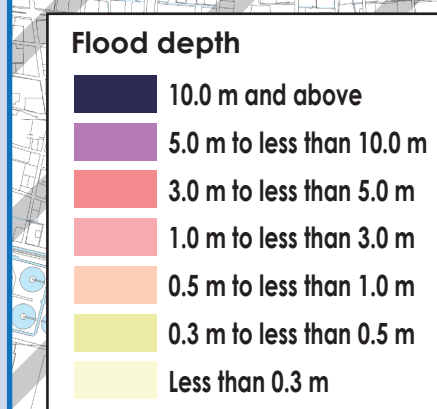
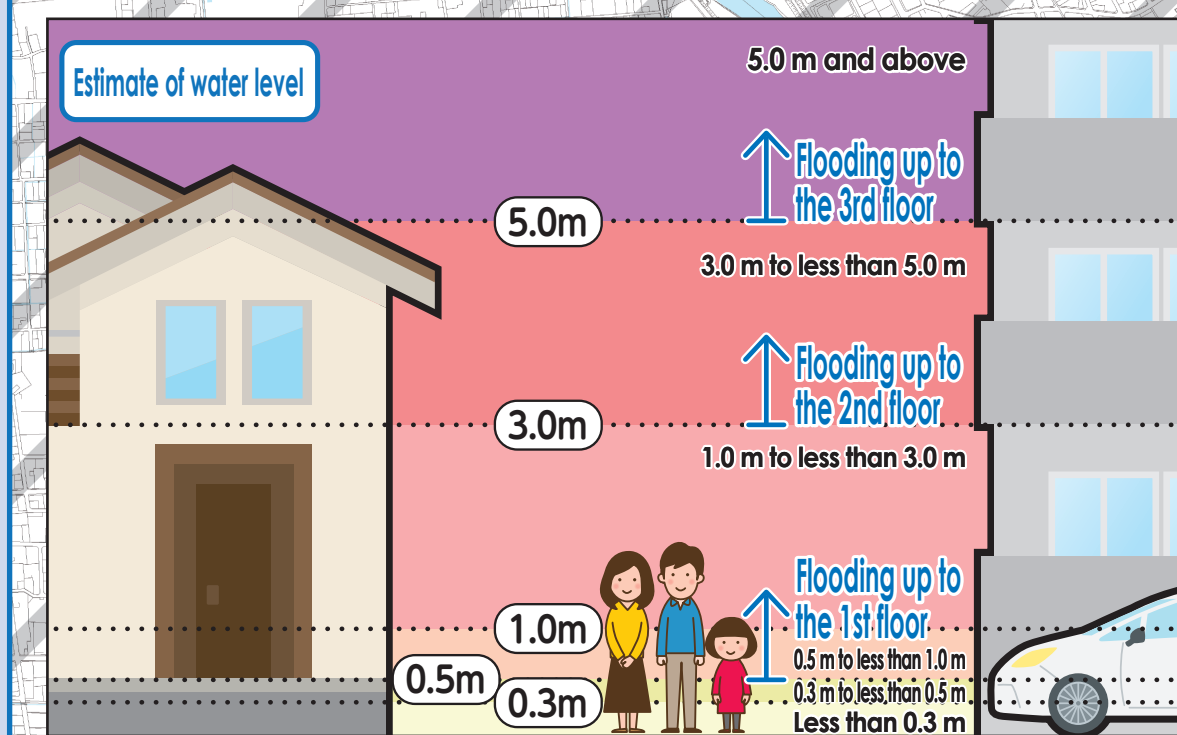


Inland flooding Hazard Map Nakamura Ward

As of June, 2022



The shaded areas are outside Nagoya City.
(No flood depth given)

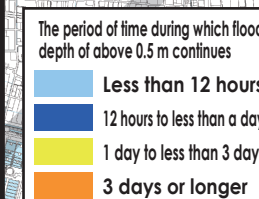
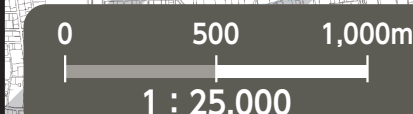
Ama City

Oharu-cho

Nakagawa Ward

This map was created based on the City Planning Basic Map created in 2015 and 2016. A part of the map has been modified after the creation where necessary.
As for the maps of Kiyosu City, Ama City, and Oharu-cho, the City Planning Basic Map is used under the approvals of the municipalities. (Approval numbers - Kiyosu City: 3清須第98, Ama City: 3あ都58, Oharu-cho: 3大郡整256)

Flood Duration Map



(Descriptions)

- Flood related information illustrated in the map is calculated by simulating immersion areas, flood depth, and flood duration assumed in case of sewer and small and medium-sized river (rivers unexpected to flood in the Flood Hazard Map) floods due to the maximum possible rainfall (156mm/h, 836mm/24h), considering the development status of facilities as of the end of FY2020.
- The simulations consider shutdown of drain pumps and closing of sluice gates associated with river level rise.
- Immersion areas, flood depth, and flood duration are only assumptions and they may largely exceed the assumptions depending on various conditions.
- The map has been created based on the results of simulations conducted by Nagoya City.

Evacuation to Designated Emergency Evacuation Site

○Please evacuate a Designated Emergency Evacuation Site according to the disaster type when you are at risk from disasters (especially when evacuation information (evacuation instructions) is issued) and unable to protect your life, at home.

○If you voluntarily evacuate regardless of evacuation instructions, please contact the ward office and confirm the evacuation site is safe.

Nagoya City Disaster Countermeasures Office /Nakamura Ward Headquarters (Nakamura Ward Office) Tel: 451-1241 (Main) 453-5303~4 (Direct) Fax: 451-7639

Civil Services (Marked as □)

- | | |
|----------------------------------------|------------------------------------------------------------------------------------|
| A Nakamura Ward Office | E Nakamura Fire Station Iwatsuka Branch |
| B Nakamura Fire Station | F Waterworks & Sewerage Bureau Nakamura Branch Office |
| C Nakamura Fire Station Hibitsu Branch | G Waterworks & Sewerage Bureau North Water Distribution & Sewer Maintenance Center |
| D Nakamura Fire Station Isubaki Branch | H Nakamura Public Works Office |

Legend

- | | | |
|-----|-------------------------------------------------------|------------------------------------------------------------------------------------------------------------------------|
| 0 | Designated Emergency Evacuation Site | Where people can temporarily evacuate themselves from disaster risks to protect their lives |
| → | Underpass | Where the roads are flooded and closed off in case of heavy rain |
| --- | Ward boundary | School district boundary (School district boundaries are rough estimates. Please contact the ward office for details.) |
| ● | Designated Emergency Evacuation Site outside the ward | |

*For availability of evacuation to Designated Emergency Evacuation Sites in other wards, see the Hazard Maps of the wards. Hazard Maps of all the wards are available on the official site of Nagoya City.

No.	Facility Name (Marked as □)	Address	Designated Emergency Evacuation Site Flood/Inland flooding
1	Hibitsu Elementary School	2-1-30 Takamichi-cho	2nd floor or higher
2	Hibitsu Junior High School	2-2-36 Takamichi-cho	2nd floor or higher
3	Meijo University Senior High School	1-3-16 Shintomi-cho	2nd floor or higher
4	Hibitsu Community Center	1-6-3 Takamichi-cho	2nd floor or higher
5	Suwa Elementary School	2-6-7 Suwa-cho	2nd floor or higher
6	Prefectural Nakamura Senior High School	1-2-18 Kikusui-cho	2nd floor or higher
7	Suwa Community Center	1-16-14 Hibitsu-cho	2nd floor or higher
8	Inabaji Elementary School	3-20 Yasukuni-cho	2nd floor or higher
9	Inabaji Community Center	1-47 Inabaji-cho	2nd floor or higher
10	Inanishi Elementary School	88 Inanishi-cho	2nd floor or higher
11	Inanishi Community Center	2-16-5 Inabaji-cho	2nd floor or higher
12	Hosei Junior High School	7-1-2 Inabaji-cho	2nd floor or higher
13	Doho Gakuen	7-1 Inabaji-cho	2nd floor or higher
14	Nakamura Elementary School	1-72 Nakamura-cho	2nd floor or higher
15	Nakamura Community Center	7-84-2 Nakamura-cho	2nd floor or higher
16	Nakamura Sports Center	43-1 Aza-machiya, Nakamura-cho	2nd floor or higher
17	Nagoya Keirin	68 Aza-takahata, Nakamura-cho	2nd floor or higher
18	Toyotomi Elementary School	2-1 Morisue-cho	2nd floor or higher
19	Toyotomi Community Center	4-106 Morisue-cho	2nd floor or higher
20	Nakamura Lifelong Learning Center	3-1-3 Torii-dori	2nd floor or higher
21	Honjin Community Center	4-68 Matsubara-cho	2nd floor or higher
22	Honoka Elementary School	5-5 Matsubara-cho	2nd floor or higher
23	Noritake Community Center	8-17 Noritake 2-chome	2nd floor or higher
24	Oise Junior High School	5-4 Sakomae-cho	2nd floor or higher
25	Kameijima-fureai Center	5-30-2 Kameijima 1-chome	2nd floor or higher
26	Sasashima Elementary School/ Junior High School	19-1 Meieki 4-chome	2nd floor or higher
27	Shimmei Community Center	17-3 Meieki 3-chome	2nd floor or higher
28	Seisa Nagoya Junior High School	6-38 Meieki Minami 4-chome	2nd floor or higher
29	Rokutan Community Center	4-7 Meieki Minami 4-chome	2nd floor or higher
30	Makino Elementary School	3-4 Takebashi-cho	2nd floor or higher
31	Makino Community Center	7-57 Taiko 3-chome	2nd floor or higher
32	Komeno Elementary School	1-28 Gongen-dori	2nd floor or higher
33	Komeno Community Center	3-11 Taiko 2-chome	2nd floor or higher
34	Hiyoshi Elementary School	1-1 Joshu-cho	2nd floor or higher
35	Kogane Junior High School	4-28 Gongen-dori	2nd floor or higher
36	Hiyoshi Community Center	4-40 Nishi Komeno-cho	2nd floor or higher
37	Sennari Elementary School	1-120 Hinomiya-cho	2nd floor or higher
38	Sennari Community Center	1-12 Sunada-cho	2nd floor or higher
39	Yanagi Elementary School	2-56 Kasumari-cho	2nd floor or higher
40	Toyokuni Junior High School	1-8 Kitahata-cho	2nd floor or higher
41	Prefectural Shoin High School	2-2 Karasumori-cho	2nd floor or higher
42	Iwatsuka Elementary School	4-17-1 Iwatsuka-cho	2nd floor or higher
43	Mita Junior High School	2-10 Iwatsuka-cho	2nd floor or higher
44	Iwatsuka Community Center	3-192 Iwatsuka-cho	2nd floor or higher
45	Hashha Elementary School	199-2 Hashha 1-chome	2nd floor or higher