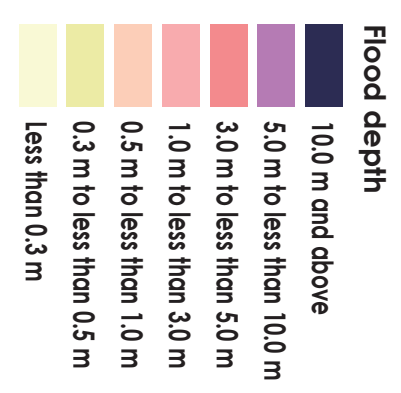


Inland flooding Hazard Map Nishi Ward

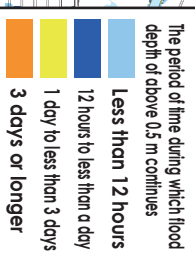
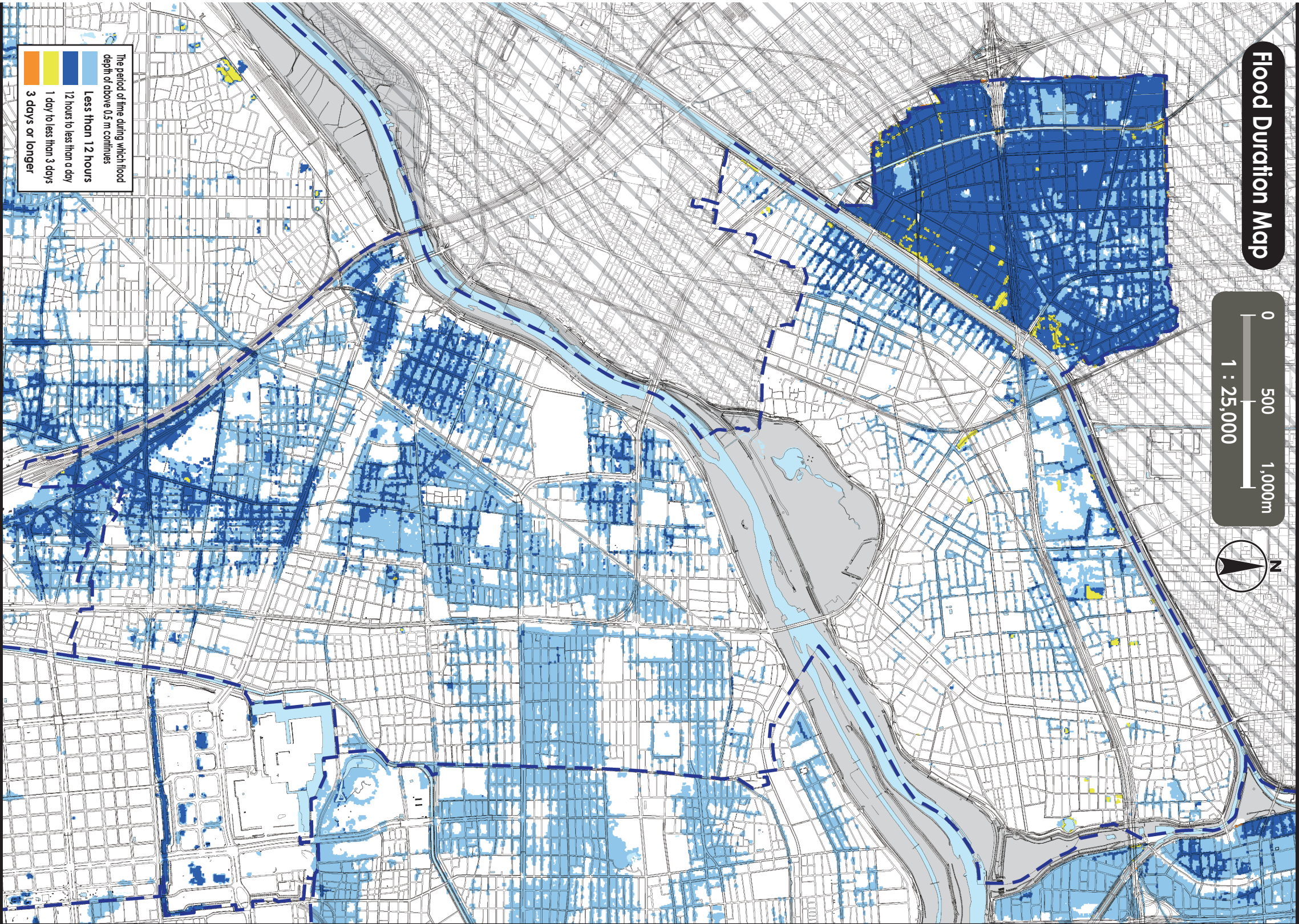


(Descriptions)

- Flood related information illustrated in the map is calculated by simulating im-mersion areas, flood depth, and flood duration assumed in case of sewer and smal and medium-sized river (rivers unexpected to flood in the Flood Hazard Map). Floods due to the maximum possible rainfall (156mm/h, 834mm/24h), considering the development status of facilities as of the end of FY2020.
- The simulations consider shutdown of drain pumps and closing of sluice gates associated with river level rise.
- Immersion areas, flood depth, and flood duration are only assumptions and they may largely exceed the assumptions depending on various conditions.
- The map has been created based on the results of simulations conducted by Nagoya City.

The shaded areas are outside Nagoya City.
(No flood depth given)

Flood Duration Map



Evacuation to Designated Emergency Evacuation Site

Please evacuate to a Designated Emergency Evacuation Site according to the disaster type when you are at risk from disasters (especially when evacuation information (evacuation instructions) is issued) and unable to protect your life, at home. If you voluntarily evacuate regardless of evacuation instructions, please contact the ward office and confirm the evacuation site is safe.

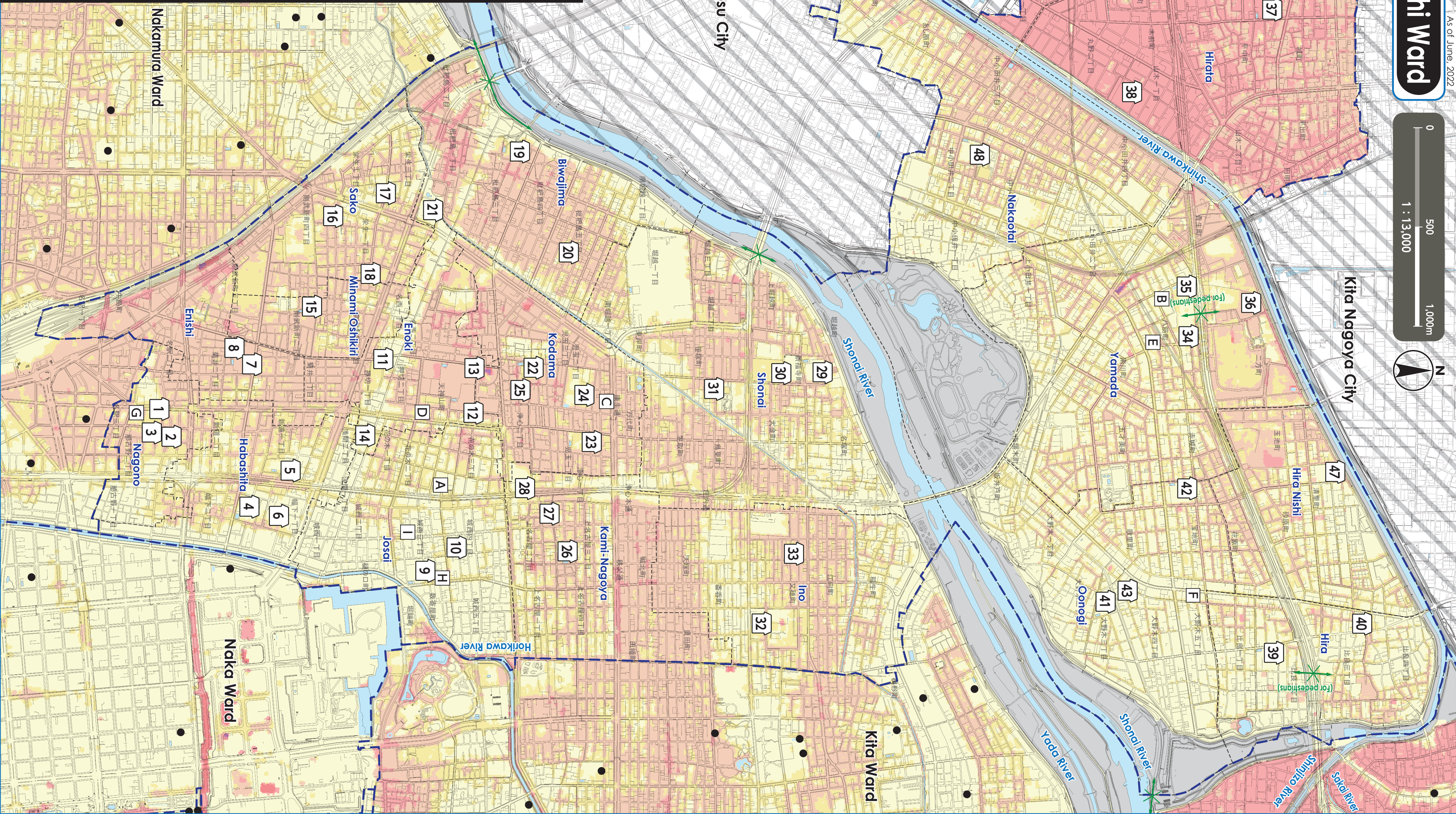
Nagoya City Disaster Comprehensive Office / Nishi Ward Headquarters (Nishi Ward Office)
Tel: 521-5311 (Main) 523-4511 ~5 (Direct) Fax: 522-5067

Legend

- Designated Emergency Evacuation Site When people can temporarily evacuate themselves from disaster risk to protect their life
- Underpass Where the road are flooded and closed off in case of heavy rain
- Ward boundary School district boundaries are roughly as follows. Please consult the ward office for details.
- Designated Emergency Evacuation Site outside the ward

Civil Services (Marked as □)

- A Nishi Ward Office
- B Nishi Ward Office Yamada Branch
- C Nishi Fire Station
- D Nishi Fire Station Oshikiri Branch
- E Nishi Fire Station Yamada Branch
- F Nishi Fire Station Onogi Branch
- G Emergency Task Forces 2
- H Nishi Public Works Office
- I Waterworks & Sewerage Bureau Nishi Service Station



*For availability of evacuation to Designated Emergency Evacuation Sites in other wards, see the Hazard Maps of the wards. Hazard Maps of all the wards are available on the official site of Nagoya City.

No.	Facility Name (Marked as □)	Address	Designated Emergency Evacuation Site Flood hazard flooding
1	Former Nagoya Elementary School	14-1 Nagoya 2-chome	2nd floor or higher
2	Nagoya Community Center	15-25 Nagoya 2-chome	2nd floor or higher
3	Daison Kindergarten	15-1 Nagoya 2-chome	2nd floor or higher
4	Nagoya Elementary School	7-17 Hobashita 1-chome	2nd floor or higher
5	Kikui Junior High School	6-33 Shimimichi 1-chome	2nd floor or higher
6	Hobashita Community Center	9-30 Hobashita 1-chome	2nd floor or higher
7	Former Enishi Elementary School	12-32 Kikui 2-chome	2nd floor or higher
8	Enishi Community Center	23-3 Kikui 2-chome	2nd floor or higher
9	Josai Elementary School	14-25 Josai 3-chome	2nd floor or higher
10	Josai Community Center	2-21 Josai 4-chome	2nd floor or higher
11	Enoki Elementary School	12-25 Oshikiri 1-chome	2nd floor or higher
12	Tenjinryama Junior High School	4-12 Tenjinryama-cho	2nd floor or higher
13	Prefectural Nagoya Nishi High School	4-7 Tenjinryama-cho	2nd floor or higher
14	Enoki Community Center	8-18 Sengen 2-chome	2nd floor or higher
15	Minami Oshikiri Elementary School	14-3 Nishioke-shimochi 2-chome	2nd floor or higher
16	Sako Elementary School	27-26 Sako 1-chome	2nd floor or higher
17	Sako Community Center	13-4 Sako 2-chome	2nd floor or higher
18	Nagoya City Nishi Culture Center	3-20 Sako 1-chome	2nd floor or higher
19	Biwajima Elementary School	16-33 Biwajima 3-chome	2nd floor or higher
20	Biwajima Community Center	11-15 Biwajima 5-chome	2nd floor or higher
21	Biwajima Sports Center	1-2 Biwajima 1-chome	2nd floor or higher
22	Kodama Elementary School	3-33 Kodama 2-chome	2nd floor or higher
23	Joshi Junior High School	15-12 Kodoma 1-chome	2nd floor or higher
24	Seiryu Junior School	20-65 Kodoma 2-chome	2nd floor or higher

No.	Facility Name (Marked as □)	Address	Designated Emergency Evacuation Site Flood hazard flooding
25	Kodama Community Center	4-14 Kodama 2-chome	2nd floor or higher
26	Kami-Nagoya Elementary School	4-18 Kami-Nagoya 3-chome	2nd floor or higher
27	Kami-Nagoya Community Center	23-22 Kami-Nagoya 2-chome	2nd floor or higher
28	Nishi Lifelong Learning Center	1-45 Joshin 1-chome	2nd floor or higher
29	Shonai Elementary School	2-5-1 Shimpu-kuji-cho	2nd floor or higher
30	Nazuka Junior High School	2-1-2 Shimpu-kuji-cho	2nd floor or higher
31	Shonai Community Center	1-24-2 Torimi-cho	2nd floor or higher
32	Ito Elementary School	2-84 Konomi-cho	2nd floor or higher
33	Ito Community Center	5-40 Matoba-cho	2nd floor or higher
34	Yamada Elementary School	38-1 Yasuji-cho	2nd floor or higher
35	Yamada Junior High School	36-3 Yasuji-cho	2nd floor or higher
36	Yamada High School	19-1 Futakoto-cho	3rd floor or higher
37	Hirota Elementary School	88 Nishihara-cho	2nd floor or higher
38	Hirota Junior High School	1 Yamateki 1-chome	2nd floor or higher
39	Hiro Elementary School	175 Hira 2-chome	2nd floor or higher
40	Hiro Community Center	154 Hira 3-chome	2nd floor or higher
41	Onogi Elementary School	17 Onogi 3-chome	2nd floor or higher
42	Yamada Higashi Junior High School	10 Tamake-cho	3rd floor or higher
43	Onogi Community Center	181 Onogi 4-chome	2nd floor or higher
44	Ukino Elementary School	98 Ukino-cho	2nd floor or higher
45	Ukino Community Center	97-93 Ukino-cho	2nd floor or higher
46	Yamada Nishi Regional Center	173 Nagasacki-cho	2nd floor or higher
47	Hiro Nishi Elementary School	347 Tamakeki 2-chome	2nd floor or higher
48	Nakacoti Elementary School	189 Nakacoti 2-chome	3rd floor or higher

This map was created based on the City Planning Basic Map created in 2015 and 2016. A part of the map has been modified after the creation where necessary. As for the maps of Kita Nagoya City and Kiyosu City, the City Planning Basic Map is used under the approvals of the cities. (Approval numbers: Kita Nagoya City: 334第21号, Kiyosu City: 334第21号)