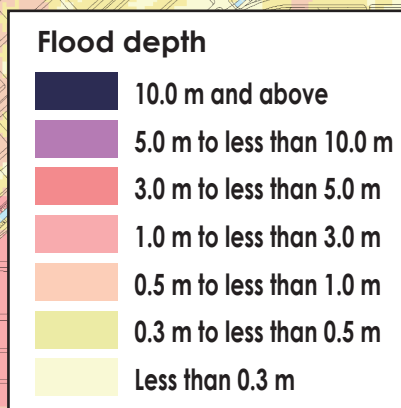
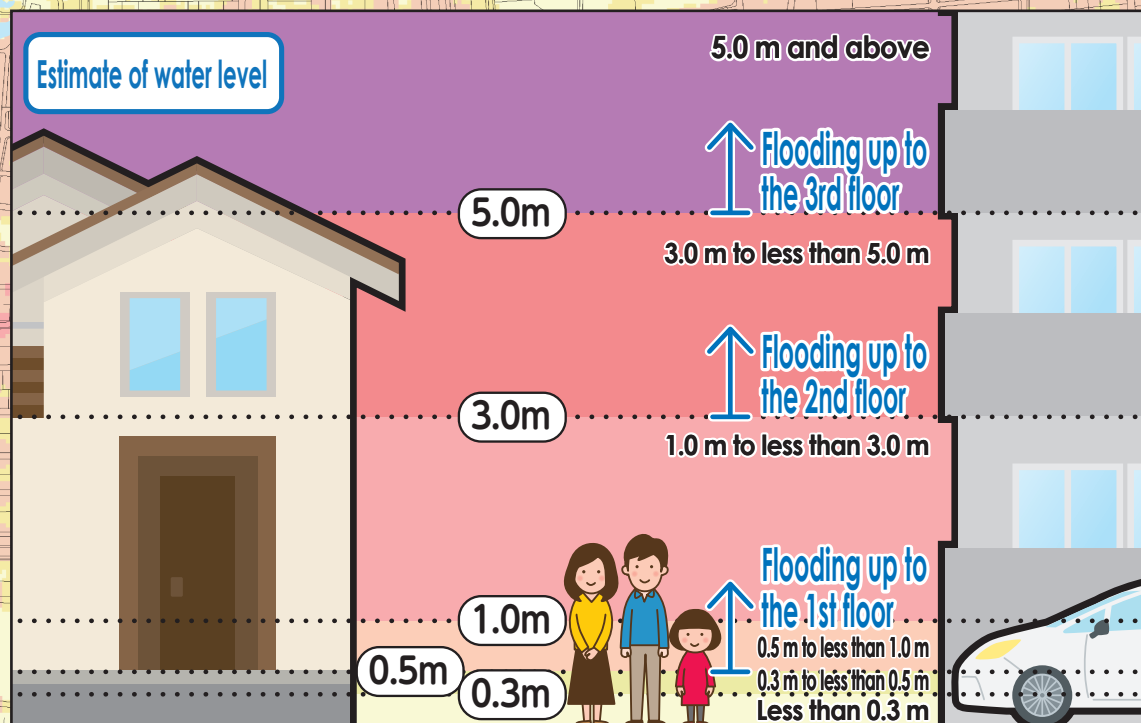


# Inland flooding Hazard Map Higashi Ward

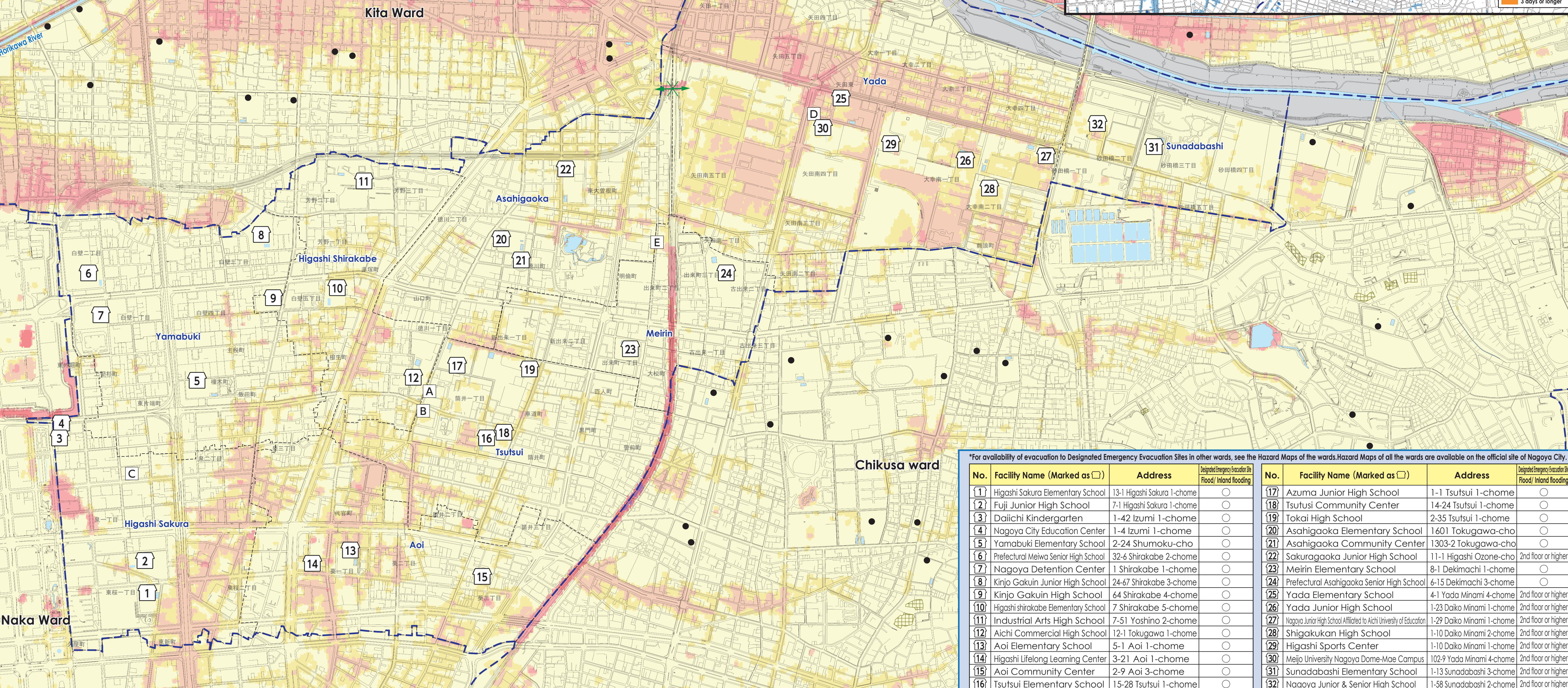
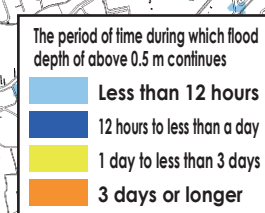
As of June, 2022

0 500 1,000m  
1 : 9,000



## Flood Duration Map

0 500 1,000m  
1 : 25,000



\*For availability of evacuation to Designated Emergency Evacuation Sites in other wards, see the Hazard Maps of the wards. Hazard Maps of all the wards are available on the official site of Nagoya City.

No.	Facility Name (Marked as □)	Address	Designated Emergency Evacuation Site Flood / Inland flooding
1	Higashi Sakura Elementary School	13-1 Higashi Sakura 1-chome	○
2	Fuji Junior High School	7-1 Higashi Sakura 1-chome	○
3	Daiichi Kindergarten	1-42 Izumi 1-chome	○
4	Nagoya City Education Center	1-4 Izumi 1-chome	○
5	Yamabuki Elementary School	2-24 Shumoku-cho	○
6	Prefectural Meiwa Senior High School	32-6 Shirakabe 2-chome	○
7	Nagoya Detention Center	1 Shirakabe 1-chome	○
8	Kinjo Gakuin Junior High School	24-67 Shirakabe 3-chome	○
9	Kinjo Gakuin High School	64 Shirakabe 4-chome	○
10	Higashi shirakabe Elementary School	7 Shirakabe 5-chome	○
11	Industrial Arts High School	7-51 Yoshino 2-chome	○
12	Aichi Commercial High School	12-1 Tokugawa 1-chome	○
13	Aoi Elementary School	5-1 Aoi 1-chome	○
14	Higashi Lifelong Learning Center	3-21 Aoi 1-chome	○
15	Aoi Community Center	2-9 Aoi 3-chome	○
16	Tsutsui Elementary School	15-28 Tsutsui 1-chome	○
17	Azuma Junior High School	1-1 Tsutsui 1-chome	○
18	Tsutsui Community Center	14-24 Tsutsui 1-chome	○
19	Tokai High School	2-35 Tsutsui 1-chome	○
20	Asahigaoka Elementary School	1601 Tokugawa-cho	○
21	Asahigaoka Community Center	1303-2 Tokugawa-cho	○
22	Sakuragaoka Junior High School	11-1 Higashi Ozono-cho	2nd floor or higher
23	Meirin Elementary School	8-1 Dekimachi 1-chome	○
24	Prefectural Asahigaoka Senior High School	6-15 Dekimachi 3-chome	○
25	Yada Elementary School	4-1 Yada Minami 4-chome	2nd floor or higher
26	Yada Junior High School	1-23 Daiko Minami 1-chome	2nd floor or higher
27	Nagoya Junior High School Affiliated to Aichi University of Education	1-29 Daiko Minami 1-chome	2nd floor or higher
28	Shigakukan High School	1-10 Daiko Minami 2-chome	2nd floor or higher
29	Higashi Sports Center	1-10 Daiko Minami 1-chome	2nd floor or higher
30	Meijo University Nagoya Dome-Mae Campus	102-9 Yada Minami 4-chome	2nd floor or higher
31	Sunadabashi Elementary School	1-13 Sunadabashi 3-chome	2nd floor or higher
32	Nagoya Junior & Senior High School	1-58 Sunadabashi 2-chome	2nd floor or higher

**(Descriptions)**

- Flood related information illustrated in the map is calculated by simulating immersion areas, flood depth, and flood duration assumed in case of sewer and small and medium-sized river (rivers unexpected to flood in the Flood Hazard Map) floods due to the maximum possible rainfall (156mm/h, 836mm/24h), considering the development status of facilities as of the end of FY2020.
- The simulations consider shutdown of drain pumps and closing of sluice gates associated with river level rise.
- Immersion areas, flood depth, and flood duration are only assumptions and they may largely exceed the assumptions depending on various conditions.
- The map has been created based on the results of simulations conducted by Nagoya City.

## Civil Services (Marked as □)

- A Higashi Ward Office
- B Higashi Fire Station
- C Higashi Fire Station Fujizuka Branch
- D Higashi Fire Station Yada Branch
- E Higashi Public Works Office

## Legend

- Designated Emergency Evacuation Site Where people can temporarily evacuate themselves from disaster risks to protect their lives
- Underpass Where the roads are flooded and closed off in case of heavy rain
- Landslide Disaster (Special) Warning Zone Area where landslide disaster is likely to occur
- Ward boundary School district boundary (School district boundaries are rough estimates. Please contact the ward office for details.)
- Designated Emergency Evacuation Site outside the ward

## Evacuation to Designated Emergency Evacuation Site

Please evacuate a Designated Emergency Evacuation Site according to the disaster type when you are at risk from disasters (especially when evacuation information (evacuation instructions) is issued) and unable to protect your life, at home. If you voluntarily evacuate regardless of evacuation instructions, please contact the ward office and confirm the evacuation site is safe.

Nagoya City Disaster Countermeasures Office /Higashi Ward Headquarters (Higashi Ward Office)  
Tel: 935-2271 (Main) 934-1111~6 (Direct) Fax: 935-5866