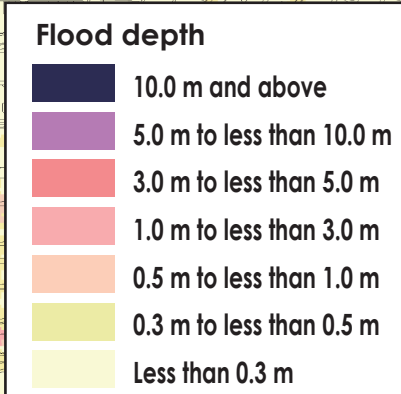
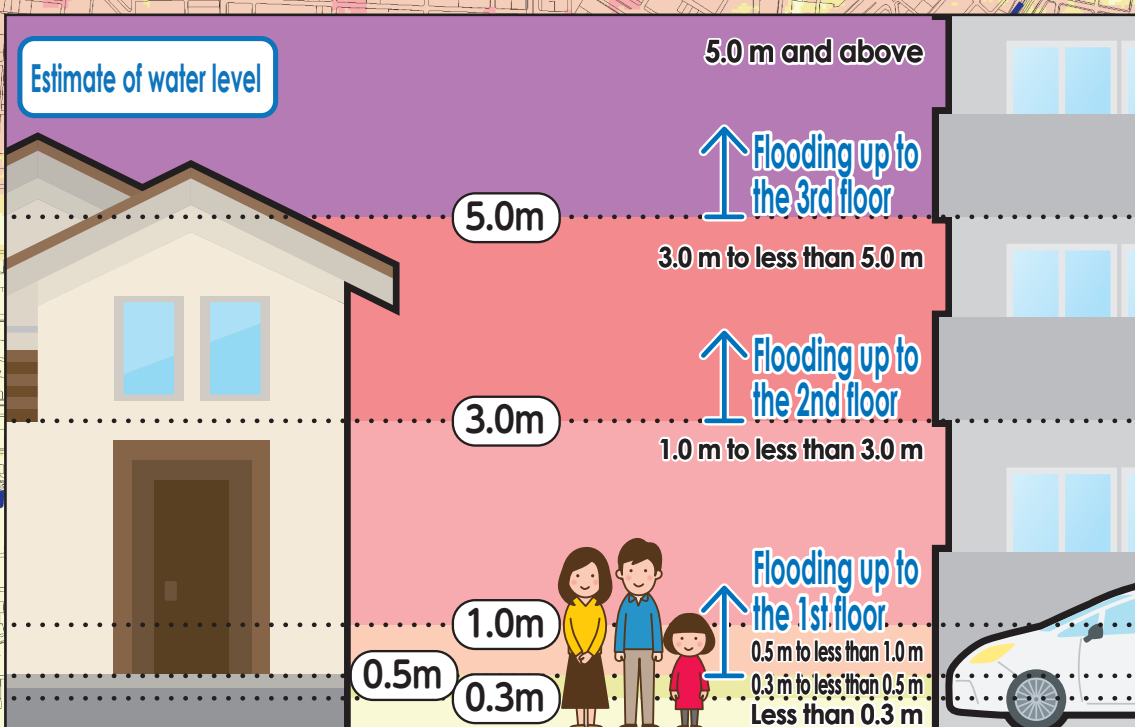
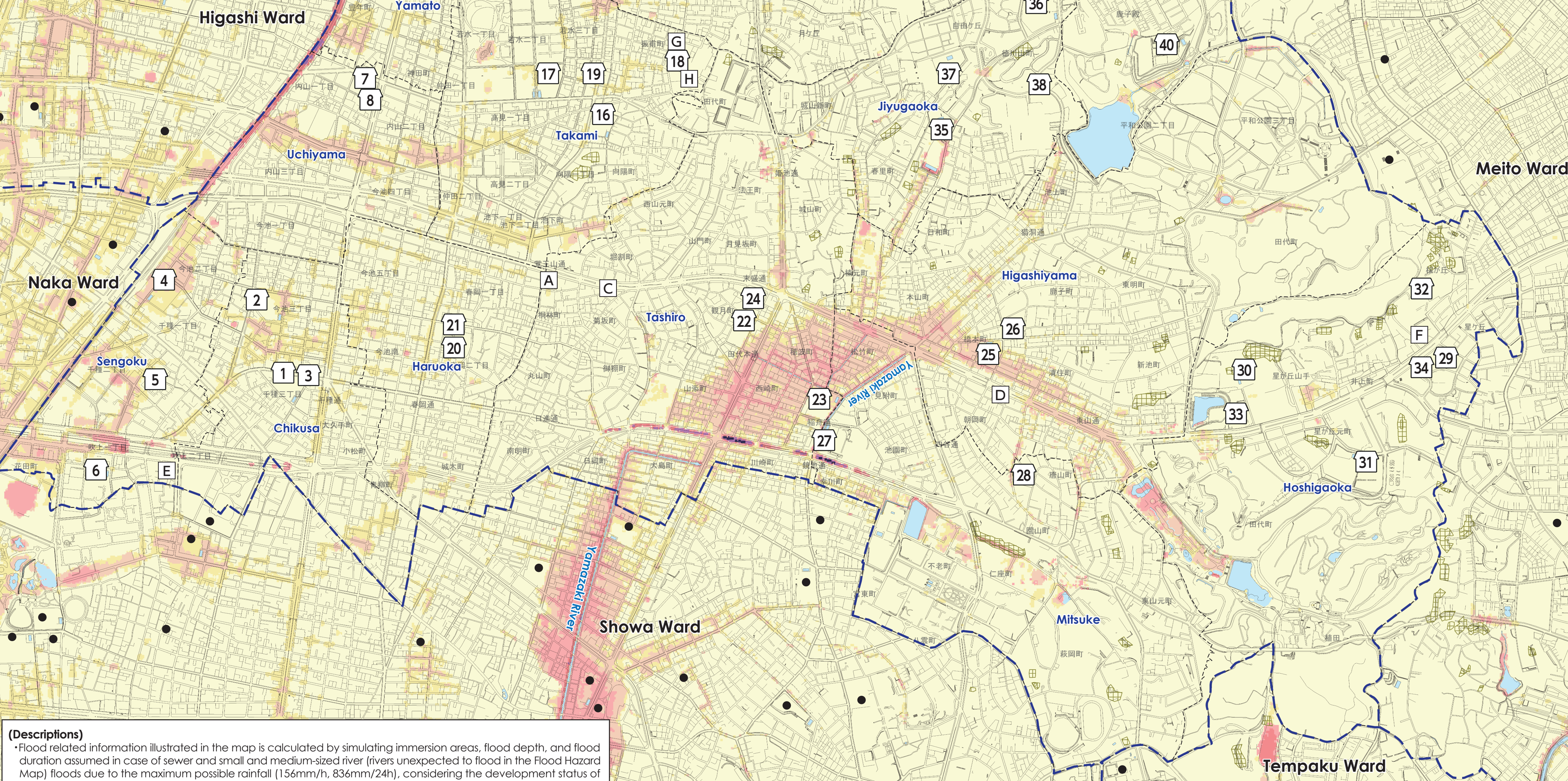
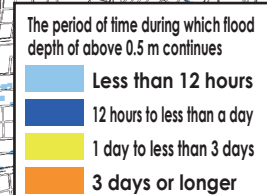
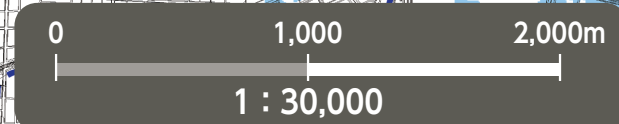


# Inland flooding Hazard Map Chikusa ward

As of June, 2022



## Flood Duration Map



**(Descriptions)**

- Flood related information illustrated in the map is calculated by simulating immersion areas, flood depth, and flood duration assumed in case of sewer and small and medium-sized river (rivers unexpected to flood in the Flood Hazard Map) floods due to the maximum possible rainfall (156mm/h, 836mm/24h), considering the development status of facilities as of the end of FY2020.
- The simulations consider shutdown of drain pumps and closing of sluice gates associated with river level rise.
- Immersion areas, flood depth, and flood duration are only assumptions and they may largely exceed the assumptions depending on various conditions.
- The map has been created based on the results of simulations conducted by Nagoya City.

### Civil Services (Marked as □)

- |   |   |
|---|---|
| A Chikusa Ward Office                     | E Chikusa Fire Station Fukiage Branch   |
| B Chikusa Fire Station                    | F Chikusa Public Works Office   |
| C Chikusa Fire Station Kakuozan Branch    | G Waterworks & Sewerage Bureau East Office                                      |
| D Chikusa Fire Station Higashiyama Branch | H Waterworks & Sewerage Bureau East Water Distribution/Sewer Maintenance Center |

### Legend

- |  |  |
|--|--|
| <b>Designated Emergency Evacuation Site</b><br>Where people can temporarily evacuate themselves from disaster risks to protect their lives | <b>Ward boundary</b>   |
| <b>Underpass</b><br>Where the roads are flooded and closed off in case of heavy rain   | <b>School district boundary</b><br>School district boundaries are rough estimates. Please contact the ward office for details. |
| <b>Landslide Disaster (Special) Warning Zone</b><br>Area where landslide disaster is likely to occur                                       | <b>Designated Emergency Evacuation Site outside the ward</b>   |

### Evacuation to Designated Emergency Evacuation Site

○ Please evacuate a Designated Emergency Evacuation Site according to the disaster type when you are at risk from disasters (especially when evacuation information (evacuation instructions) is issued) and unable to protect your life, at home. ○ If you voluntarily evacuate regardless of evacuation instructions, please contact the ward office and confirm the evacuation site is safe.

**Nagoya City Disaster Countermeasures Office / Chikusa Ward Headquarters (Chikusa Ward Office)**  
Tel: 762-3111 (Main) 753-1811 (Direct) Fax: 762-5044