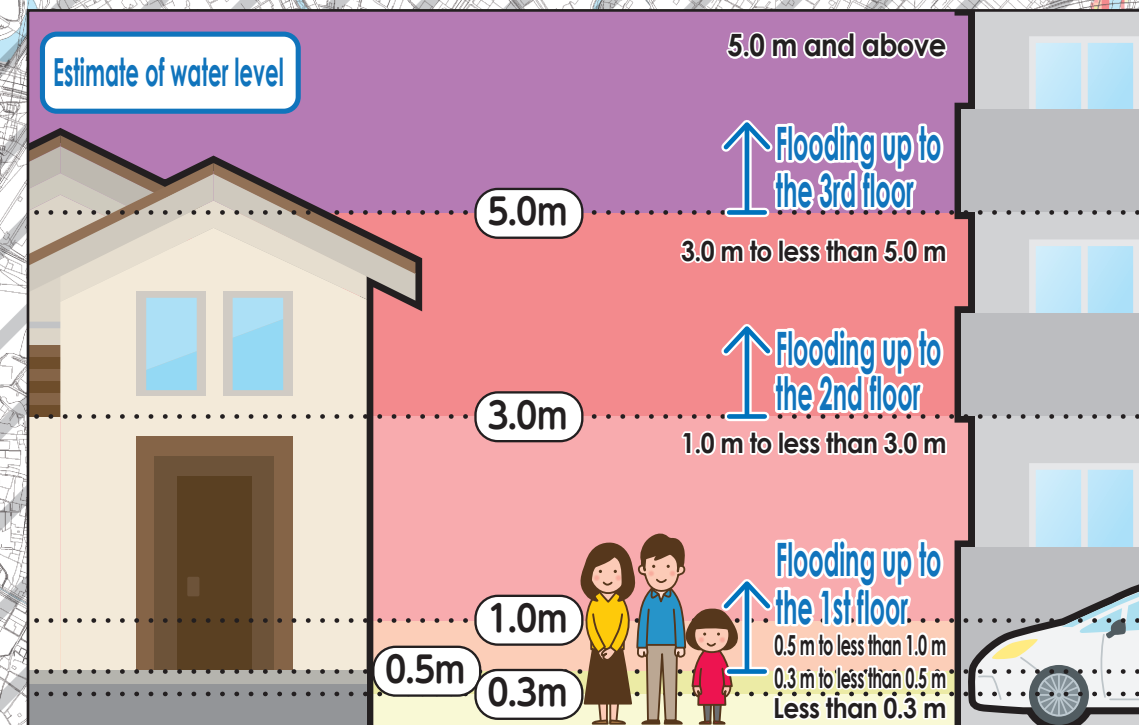
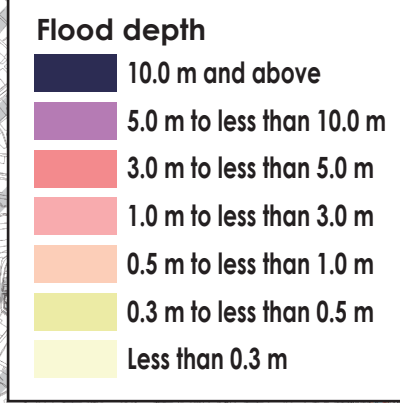


Tokai City



(Descriptions)

- The flooded areas, flooding depths and durations shown in this map were calculated assuming a storm surge caused by a typhoon (central pressure 910 hPa, radius 75 km, speed 73 km/h) with a pressure equal to Typhoon Muroto — the largest typhoon ever to hit Japan, passes along the most critical paths in the Mikawa Bay and Ise Bay coast.
- The flooded area as well as the depth and duration of flooding are only assumptions. Flooding may occur at a larger scale depending on a variety of factors.
- This map was created based on the storm surge flooding area map published by Aichi Prefecture in June 2021.

We used the basic urban planning maps used between 2015 and 2016 to create this map. Corrections were made accordingly. We used the urban planning maps of the following places with their consent: Tokai City, Obu City, Toyooka City, Togo Town and Nissin City. (Approval numbers – Tokai City: 都29, Obu City: 3大郡321-2, Toyooka City: 豊都180, Togo Town: 東計発42, and Nissin City: 3日都256) (Landslide Disaster Hazard Map, Aichi Prefecture, Creative Commons license, Attribution 2.1 Japan (<https://creativecommons.org/licenses/by/2.1/ja/>)).

No.	Facility Name (Marked as□)	Address	Designated Emergency Evacuation Shelter Storm Surge	No.	Facility Name (Marked as□)	Address	Designated Emergency Evacuation Shelter Storm Surge
1	Narumi Elementary School	98 Aza yagiri, Narumi-cho	○	38	Tokushige District Hall	401 Mototokushige 1-chome	○
2	Narumi Community Center	22-1 Aza shiro, Narumi-cho	○	39	Kumanomae Elementary School	901 Kamegahora 1-chome	○
3	Midori Lifelong Learning Center	54 Aza hommachi, Narumi-cho	2nd floor or higher	40	Kumanomae Community Center	608-2 Fujizuka 1-chome	○
4	Sakaemachi Meeting House	60-1 Aza kamishido, Narumi-cho	Evacuation unavailable	41	Kaminokura Elementary School	198 Kaminokura 2-chome	2nd floor or higher
5	Aibara Elementary School (south school building only)	301 Wakata 1-chome	2nd floor or higher	42	Kaminokura Junior High School	1201 Shiotsuchi	○
6	Narumi Junior High School	96 Rokuden 2-chome	2nd floor or higher	43	Kaminokura Community Center	199 Kaminokura 4-chome	○
7	Aibara Community Center	1102 Wakata 2-chome	2nd floor or higher	44	Tenrikyo Aichi Grand Church	2401 Higashi Kaminokura 2-chome	○
8	Midori Sports Center	2901 Aibarago 1-chome	2nd floor or higher	45	Higashigaoka Elementary School	9 Aza arimatsuya, Narumi-cho	○
9	Asahide Elementary School	101 Asahide 1-chome	○	46	Toyo Junior High School (Training place (Dojo) only)	100-1 Aza hosone, Narumi-cho	○
10	Midori Senior High School	1104 Asahide 1-chome	○	47	Higashigaoka Community Center	200 Aza arimatsura, Narumi-cho	○
11	Asahide Community Center	54 Shikayama 1-chome	○	48	Taishi Elementary School	242 Taishi 2-chome	○
12	Takinomizu Elementary School	1901 Takinomizu 1-chome	○	49	Taishi Community Center	1604 Ubakoyama 3-chome	○
13	Takinomizu Community Center	1501 Takinomizu 1-chome	○	50	Naruko Elementary School	2-69 Naruko-cho	○
14	Katahira Elementary School	18 Aza katahira, Narumi-cho	○	51	Narukodai Junior High School	3-40 Naruko-cho	○
15	Chidorigaoka Junior High School	108 Aza yamanokami, Narumi-cho	○	52	Naruko Community Center	2-70 Naruko-cho	○
16	Narumi Shrine Office	85 Aza otokoyama, Narumi-cho	○	53	Naganedai Elementary School	161-1 Konarumi 2-chome	○
17	Urasato Elementary School	77 Urasato 1-chome	3rd floor or higher	54	Naganedai Community Center	98-6 Aza Ikegami, Narumi-cho	○
18	Midori Elementary School	24 Aza zennowa, Narumi-cho	3rd floor or higher	55	Togasa Elementary School	60 Aikawa 3-chome	○
19	Midori Community Center	106 Aza zennowa, Narumi-cho	2nd floor or higher	56	Togasa Community Center	101 Aikawa 3-chome	○
20	Hirako Elementary School	236 Hirakogaoka	○	57	Arimatsu Elementary School (Except for school buildings)	2803 Arimatsu	○
21	Sakoyoyama Junior High School	1407 Sakoyoyama	○	58	Arimatsu Junior High School	34-85 Aza takone, Oaza Okehazama, Arimatsu-cho	○
22	Hirako Community Center	36 Sone 2-chome	2nd floor or higher	59	Arimatsu Community Center	3052 Arimatsu	○
23	Prefectural Narumi High School	801 Sakoyoyama	○	60	Okehazama Elementary School	1908 Okehazama Makiyama	○
24	Narumi-Hobu Elementary School	901 Hirate Kita 2-chome	○	61	Nanryo Elementary School	1348 Okehazama Morimae	○
25	Narumi-Hobu Community Center	203 Hirate Minami 1-chome	○	62	Odaka Elementary School	2601 Odakadai 3-chome	○
26	Kosaka Elementary School	1001-2 Kosaka 1-chome	○	63	Odaka Regional Community Center	46-1 Aza kadota, Odaka-cho	2nd floor or higher
27	Kosaka Community Center	2006 Kosaka 2-chome	○	64	Odaka School District Meeting House	2301 Odakadai 3-chome	○
28	Takinomizu Junior High School	602 Takinomizu 3-chome	○	65	Odaka Minami Elementary School	1004 Minami Odaka 1-chome	2nd floor or higher
29	Konomiya Takinomizu Store	301 Takinomizu 3-chome	○	66	Odaka Junior High School (Except for south school building)	107 Morinosato 1-chome	○
30	Joan Elementary School	2101 Norikura 1-chome	○	67	Odaka Minami Community Center	94 Morinosato 1-chome	2nd floor or higher
31	Joan Community Center	12 Norikura 3-chome	○	68	Odaka Kita Elementary School	1 Aza machiyagawa, Odaka-cho	2nd floor or higher
32	Oshimizu Elementary School	901 Oshimizu Nishi	○	69	Nagoya City Youth Accommodation Center	4-6 Aza mamushike, Odaka-cho	○
33	Kamakuradai Junior High School	402 Kamakuradai 2-chome	○	70	Kuroishi Elementary School	1533 Kurosawadai 2-chome	○
34	Oshimizu Community Center	801 Sunada 2-chome	○	71	Kuroishi Community Center	11 Aza kamisawa, Narumi-cho	○
35	Tokushige Elementary School	801 Tokushige 2-chome	○	72	Momoyama Elementary School	327 Momoyama 4-chome	○
36	Ogida Junior High School	1201 Tokushige 1-chome	○	73	Kamisawa Junior High School	1201 Kamisawa 2-chome	○
37	Tokushige Community Center	401 Tokushige 2-chome	○	74	Momoyama Community Center	96 Momoyama 2-chome	○

Evacuation to Designated Emergency Evacuation Shelter

OPlease evacuate to a designated emergency evacuation shelter according to the type of disaster if you are in danger (especially when evacuation information (evacuation instruction, etc.) is released) and you cannot stay at home to save your life. OIn the event of a high tide, there are designated emergency evacuation sites where evacuation is not possible because the expected flood depth is deeper in some areas than in case of flooding or inundation. OPlease contact the ward office in advance to confirm the place you are going is safe if you intend to evacuate on your own command.

Nagoya City Disaster Countermeasures Office /MidoriWard Headquarters (Midori Ward Office)
Tel: 21-2111 (Main) 625-3903~6 (Direct) Fax: 623-8191

Public Offices (Marked as □)

A Midori Ward Office	E Midori Fire Station Aritatsu Branch	I Waterworks & Sewerage Bureau Midori Branch Office
B Midori Ward Office Tokushige Branch	F Midori Fire Station Tokushige Branch	J Waterworks & Sewerage Bureau South Water Distribution & Sewer Maintenance Center
C Midori Fire Station	G Midori Fire Station Narumi Branch	
D Midori Fire Station Odaka Branch	H Midori Public Works Office	

Legend

0	Designated Emergency Evacuation Shelter	Places where you can take shelter from the danger of a flooding disaster in order to save your life.
→→→	Underpass	Areas where heavy rain will cause roads to be flooded and closed to traffic.
■	Landslide Disaster (Special) Warning Zone	Areas where landslides may occur.
---	Ward boundary	
----	School district boundary	(School districts are approximate. Please contact the respective ward office for further information. Please contact the respective ward office for further information.)
●	Designated Emergency Evacuation Shelter outside the ward.	
■■■■	Seawall	Facility to prevent damages from tsunamis, storm surge and other disasters.