

*For availability of evacuation to Designated Emergency Evacuation Sites in other wards, see the Hazard Maps of the wards. Hazard Maps of all the wards are available on the official site of Nagoya City.

No.	Facility Name (Marked as □)	Address	Designated Emergency Evacuation Site Storm Surge	No.	Facility Name (Marked as □)	Address	Designated Emergency Evacuation Site Storm Surge
1	Meiji Elementary School	3-50 Meiji 2-chome	2nd floor or higher	27	Honjo Junior High School	3-1 Toriyama-cho	2nd floor or higher
2	Meiji Community Center	14-1 Meiji 2-chome	Evacuation unavailable	28	Prefectural Nagoya Technology High School	1 Ahara-cho	Evacuation unavailable
3	Temma Elementary School	38-9 Yutaka 2-chome	2nd floor or higher	29	Kasadera Community Center	5-2-31 Maehama-dori	○
4	Meiho Junior High School	39-3 Yutaka 2-chome	2nd floor or higher	30	Hoshizaki Elementary School	163 Minamino 3-chome	3rd floor or higher
5	Temma Community Center	37-8 Yutaka 1-chome	Evacuation unavailable	31	Hoshizaki Community Center	52 Hoshizaki 1-chome	Evacuation unavailable
6	Toyoda Elementary School	19-23 Toyoda 1-chome	2nd floor or higher	32	Ryuto Elementary School	113 Shiba-cho	2nd floor or higher
7	Toyoda Community Center	9-19 Toyoda 4-chome	Evacuation unavailable	33	Ryuto Community Center	57 Hakuun-cho	2nd floor or higher
8	Dotoku Elementary School	5-43 Dotoku-shimmachi	3rd floor or higher	34	Taisei Elementary School	3-76 Nishi Matabe-cho	2nd floor or higher
9	Oe Junior High School	5-48 Dotoku-shimmachi	3rd floor or higher	35	Taisei Fureai Center	4-8-1 Nishi Matabe-cho	Evacuation unavailable
10	Community Center Dotoku	2-72 Dotoku-tori	3rd floor or higher	36	Prefectural Nagoya Minami High School	5-1-11 Higashi Matabe-cho	2nd floor or higher
11	Dotoku Nursery School	6-20 Kannon-cho	3rd floor or higher	37	Minami Lifelong Learning Center	5-1-10 Higashi Matabe-cho	2nd floor or higher
12	Yobitsugi Elementary School	17-10 Yobitsugi 4-chome	○	38	NGK Insulators Sports Plaza	5-1-16 Higashi Matabe-cho	2nd floor or higher
13	Shinko Junior High School	4-8 Yobitsugi 4-chome	○	39	Takara Elementary School	2-5 Nakawari-cho	2nd floor or higher
14	Yobitsugi Community Center	4-60 Yobitsugi 4-chome	○	40	Takara Community Center	2-2 Hoshio-cho	2nd floor or higher
15	Oiso Elementary School	5-1 Kitauchi-cho	2nd floor or higher	41	Honan Elementary School	3-48 Tsutsumiokoshi-cho	2nd floor or higher
16	Oiso Community Center	3-25 Kitauchi-cho	2nd floor or higher	42	Nanko Junior High School	4-119 Hamada-cho	2nd floor or higher
17	Sakura Elementary School	13-38 Sakuradai 2-chome	○	43	Honan Community Center	1-20-6 Motoshio-cho	2nd floor or higher
18	Sakurada Junior High School	4-52 Nakae 1-chome	2nd floor or higher	44	Hakusui Elementary School	2-1 Matsushita-cho	3rd floor or higher
19	Sakura Community Center	15-4 Sakuradai 2-chome	○	45	Daido University Daido Senior High School	2-21 Daido-cho	3rd floor or higher
20	Kikuzumi Elementary School	12-37 Kakeage 1-chome	○	46	Hakusui Community Center	3023-3 Aza Tangeoe, Naruo-cho	Evacuation unavailable
21	Tsukihiko Okamimichi Church Headquarters	7-14 Hirako 2-chome	2nd floor or higher	47	Chidori Elementary School	6-1 Miyoshi-cho	3rd floor or higher
22	Kikuzumi Community Center	14-13 Kakeage 1-chome	○	48	Meinan Junior High School	5-43 Miyoshi-cho	3rd floor or higher
23	Kasugano Elementary School	9-1 Kasugano-cho	○	49	Chidori Community Center	4-22 Tempaku-cho	Evacuation unavailable
24	Sakuradai Senior High School	21 Kasumi-cho	○	50	Shibata Elementary School	19 Hakusui-cho	3rd floor or higher
25	Kasugano Community Center	77 Kasumi-cho	○	51	Tsudoino-yakata Wako	2-20-2 Motoshibata-higashimachi	3rd floor or higher
26	Kasadera Elementary School	765 Aza honjo, Motohoshizaki-cho	○	52	Daido University	10-3 Takiharu-cho	3rd floor or higher

Evacuation to Designated Emergency Evacuation Shelter

OPlease evacuate to a designated emergency evacuation shelter according to the type of disaster if you are in danger (especially when evacuation information (evacuation instruction, etc.) is released) and you cannot stay at home to save your life.

OIn the event of a high tide, there are designated emergency evacuation sites where evacuation is not possible because the expected flood depth is deeper in some areas than in case of flooding or inundation.

OPlease contact the ward office in advance to confirm the place you are going is safe if you intend to evacuate on your own command.

Nagoya City Disaster Countermeasures Office /Minami Ward Headquarters (Minami Ward Office) Tel: 811-5161 (Main) 823-9311~6 (Direct) Fax: 811-6360

Public Offices (Marked as □)

A

Minami Ward Office

B

Minami Fire Station

C

Minami Fire Station

D

Minami Fire Station

E

Minami Fire Station

F

Minami Fire Station

G

Minami Public Works Office

Legend

0

Designated Emergency Evacuation Shelter
Places where you can take shelter from the danger of a flooding disaster in order to save your life.

→

Underpass
Areas where heavy rain will cause roads to be flooded and closed to traffic.

■

Landslide Disaster (Special) Warning Zone
Areas where landslides may occur.

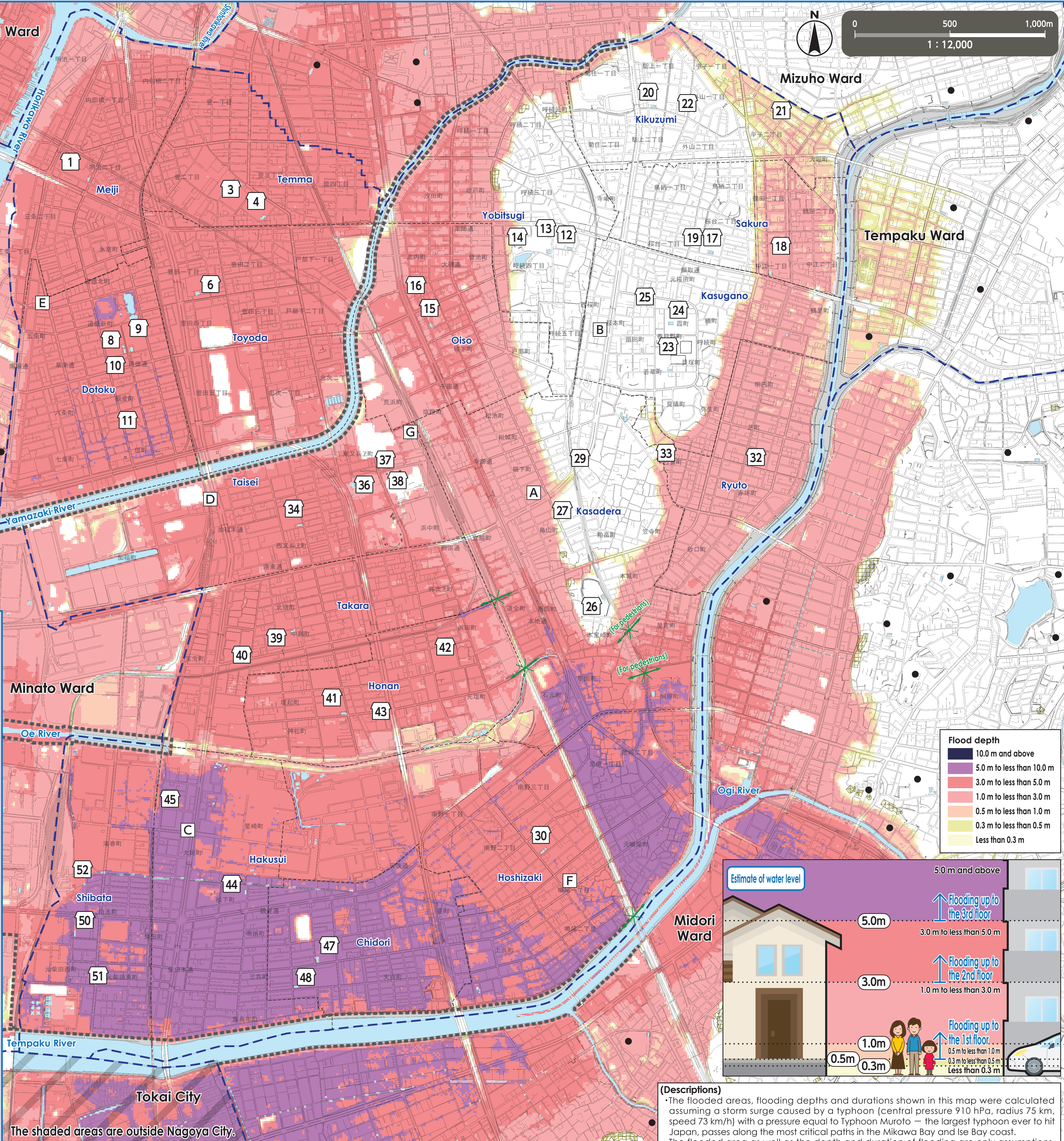
Ward boundary

School district boundary

●

Designated Emergency Evacuation Shelter outside the ward

Seawall
Facility to prevent damages from tsunami, storm surge and other disasters.



We used the basic urban planning maps used between 2015 and 2016 to create this map. Corrections were made accordingly. We used the urban planning maps of the following places with their consent: Tokai City. (Approval number – Tokai City: 都29) Landslide Disaster Hazard Map, Aichi Prefecture, Creative Commons License Attribution 2.1 Japan (<http://creativecommons.org/licenses/by/2.1/jp/>)