



Earthquake

# Hazard Map Meito Ward



## About the Earthquake Hazard Map

- This map shows the seismic intensity and liquefaction potential in various areas of the city based on the damage we could expect in case a Nankai Trough earthquake occurs. The expected damage was announced by the city in February 2014.
- In Nankai trough we assume the largest class earthquake considering various possibilists as an earthquake that would cause enormous damages should it happen, although the probability of the occurrence is as extremely low as once in 1000 years or less.

## Evacuation to Designated Emergency Evacuation Shelter

Nagoya City Disaster Countermeasures Office /  
MeitoWard Headquarters (Meito Ward Office)  
Tel: 773-1111 (Main) 778-3013 (Direct) Fax: 773-7864

### Public Office (Marked as □)

- |                      |   |  |
|----------------------|---|--|
| A Meito Ward Office  | C Meito Fire Station<br>Hoshigaoka Branch | E Meito Fire Station<br>Yutakagaoka Branch |
| B Meito Fire Station | D Meito Fire Station<br>Inkoishi Branch   | F Meito Public Works Office                |

### Legend

- Designated Emergency Evacuation Shelter (shakes of earthquake, large scale fire) [Regional Evacuation Shelters]**  
Parks and green spaces that are designated emergency evacuation shelter for earthquakes and large fires that have space to protect evacuees from large-scale fires.
- Designated Emergency Evacuation Shelters (shakes of earthquake) [Temporary Evacuation Sites]**  
Designated emergency evacuation shelters for earthquakes. You can temporarily shelter and check on the situation here.
- Emergency water supply facilities (permanent and temporary water taps)**  
These facilities are provided at wide-area evacuation sites, etc., and are opened in the event of a disaster by municipal waterworks staff or private businesses owners that have settled support agreements with the Waterworks Bureau.
- Emergency Water Supply Facilities (Underground hydrants)**  
Water supply taps are installed at all public elementary and junior high schools in the water supply area. The taps need to be operated by evacuees themselves in the event of a disaster.
- Disaster emergency well (office)**  
Wells owned by private offices, factories, etc. made available to local residents in the event of a major earthquake to secure water for daily use (not drinking water).
- Landslide Disaster (Special) Warning Zone**  
Areas where landslides may occur.
- Ward boundary** (solid blue line)
- School district boundary** (dashed blue line)  
(School districts are approximate. Please contact the respective ward office for further information.)

\*Please refer to the hazard maps of other wards to verify whether if their designated emergency evacuation shelters are open to our residents. Hazard Maps of all the wards are available on the official website of Nagoya City.

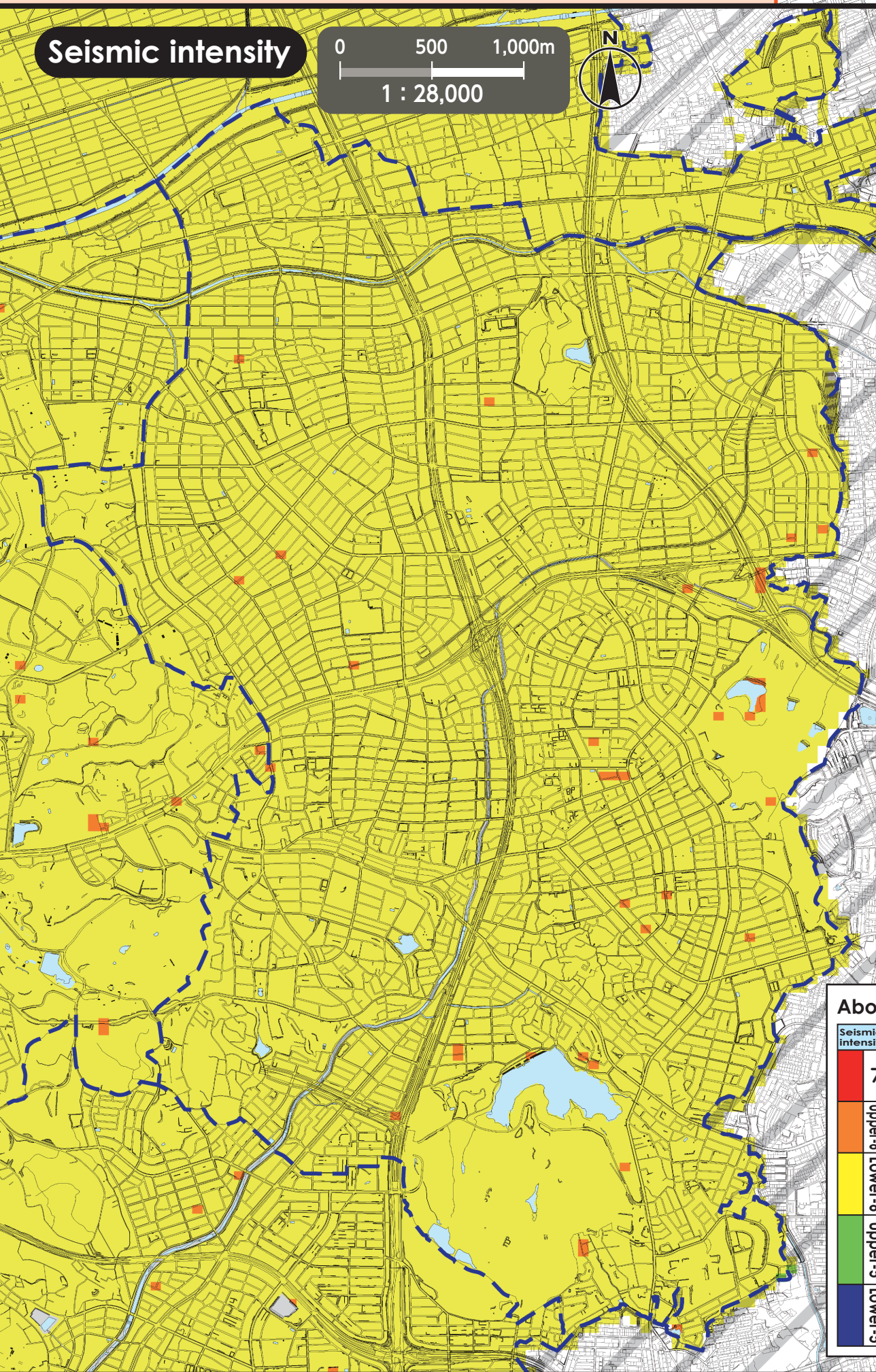
Designated Emergency Evacuation Shelter (shakes of earthquake, large scale fire) [Regional Evacuation Shelters]			
Code	Facility name	Designated Emergency Evacuation Shelter	
		Shakes of earthquake	Large scale fire
A	Uezono Park	○	○
B	Akegaoka Park	○	○
C	Kamiyashiro Park	○	○
D	Nishi Issha-chuo Park	○	○
E	Itaka Green	○	○
F	Meitoku Park	○	○
G	Makinogaike Green	○	○
H	Higashiyama Park	○	○
I	Heiwa Park	○	○
J	Omori-chuo Park/ Oharabashi Green (entire area)	○	○

## Designated Emergency Evacuation Shelters (shakes of earthquake) [Temporary Evacuation Sites]

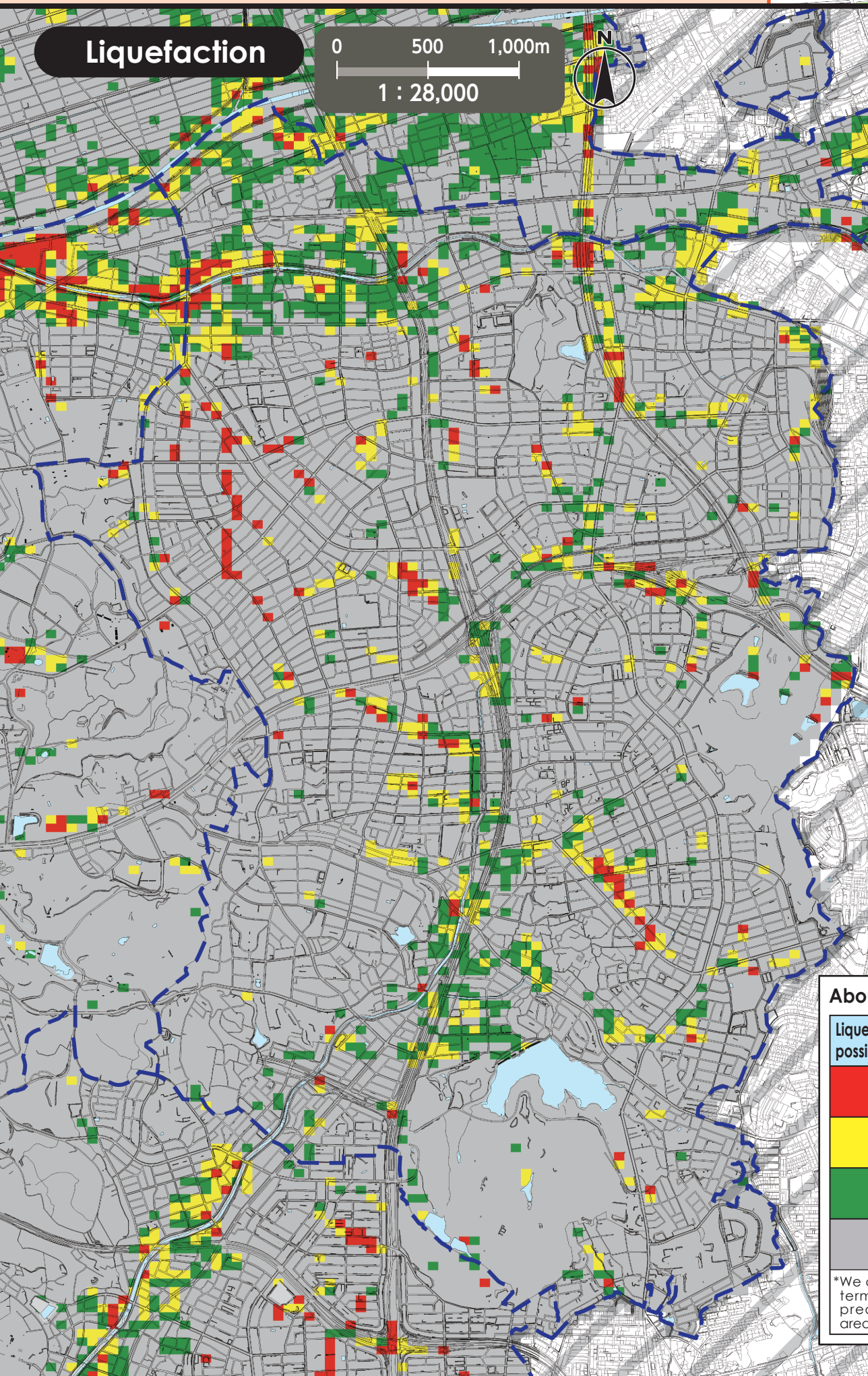
Code	Facility name	Designated Emergency Evacuation Shelter	
		Shakes of earthquake	Large scale fire
a	Kamioka Park	○	×
b	Nishiyamanaka Park	○	×
c	Hongo Park	○	×
d	Hazama Park	○	×
e	Kifune Park	○	×
f	Issha Park	○	×
g	Obari-chuo Park	○	×
h	Inkoishihara-chuo Park	○	×
	City elementary, junior high and some high school grounds (Meito Senior High School, Chigusa High School)	○	×
*Wide-area evacuation shelters are equipped to deal with large scale fire.			

## Disaster emergency well (office)

Code	Facility name
1	Toho High School
2	Medical Corporation Koutokukai Meito Hospital
3	Special Elderly Nursing Home Gokuraku-en
4	Welfare Facility for the Elderly Kanaregawa
5	Housing for Senior Residence Nishiyama
6	Aichi Country Club

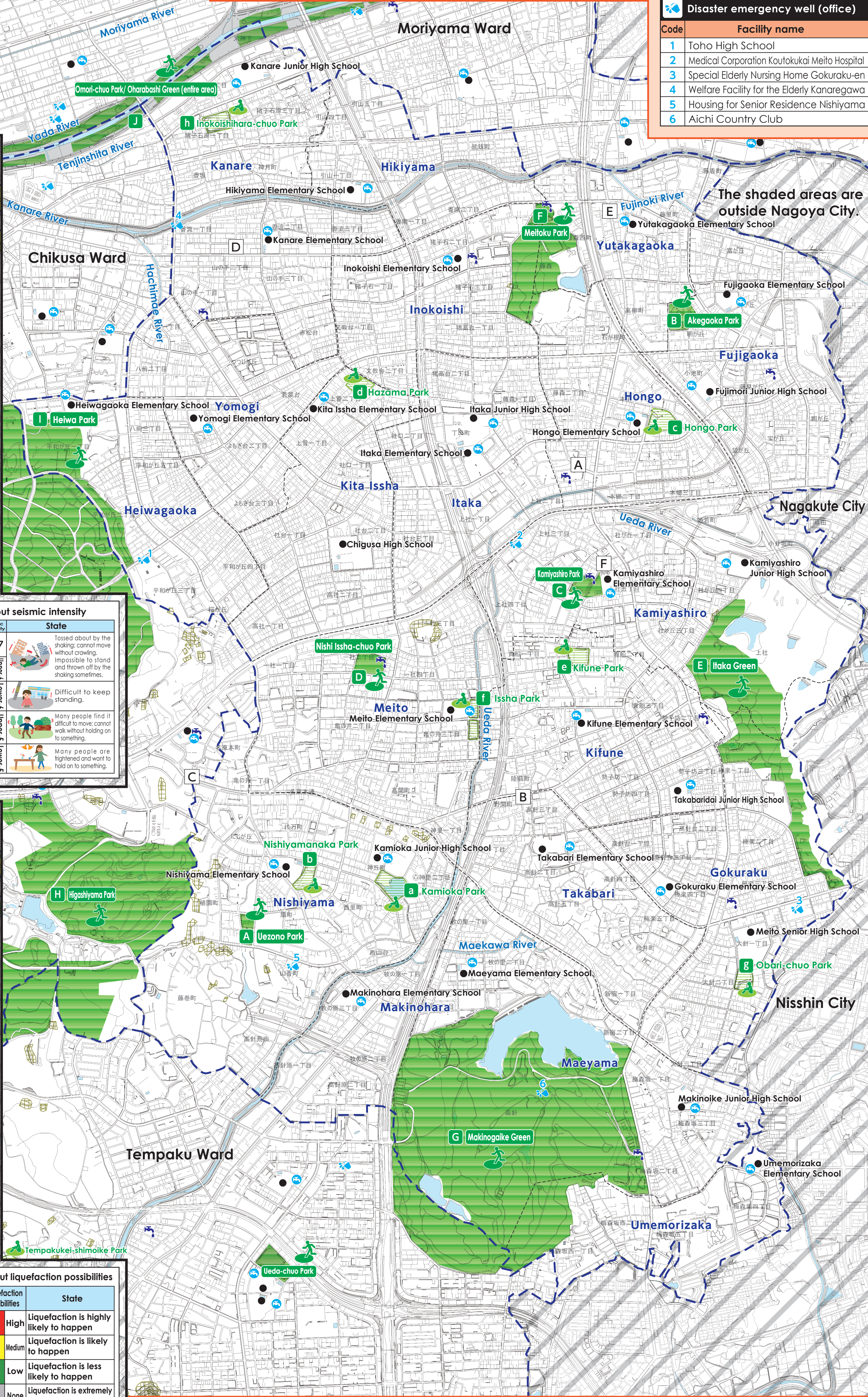


About seismic intensity	
Seismic intensity	State
7	Tossed about by the shaking; cannot move without crawling. Impossible to stand and thrown off by the shaking sometimes.
Upper-lower	Difficult to keep standing.
Lower-lower	Many people find it difficult to move; cannot walk without holding on to something.
Upper-lower	Many people are frightened and want to hold on to something.
Lower-lower	



About liquefaction possibilities	
Liquefaction possibilities	State
High	Liquefaction is highly likely to happen
Medium	Liquefaction is likely to happen
Low	Liquefaction is less likely to happen
None	Liquefaction is extremely unlikely to happen

\*We can only talk about liquefaction in terms of possibility as it is difficult to predict the actual probability and areas of occurrence.



We used the basic urban planning maps used between 2015 and 2016 to create this map. Corrections were made accordingly. We used the urban planning maps of the following places with their consent: Nishin City, Nagakute City and Owariasahi City. (Approval numbers – Nishin City: 3日都256, Nagakute City: 3長都162, and Owariasahi City: Reiwa3. 1) Landslide Disaster Hazard Map, Aichi Prefecture, Creative Commons License Attribution 2.1 Japan (<http://creativecommons.org/licenses/by/2.1/jp/>)