



Earthquake

Hazard Map Nakagawa Ward

0 500 1,000m
1 : 19,000The shaded areas are
outside Nagoya City.

Evacuation to Designated Emergency Evacuation Shelter

**Nagoya City Disaster
Countermeasures Office /
Nakagawa Ward Headquarters
(Nakagawa Ward Office)**Tel: 362-1111 (Main)
363-4306~9 (Direct)
Fax: 362-6562

Public Office (Marked as □)

- | | |
|---|---|
| A Nakagawa Ward Office | F Nakagawa Fire Station
Shimonoiishiki Branch |
| B Nakagawa Ward Office
Tomida Branch | G Nakagawa Fire Station
Tomida Branch |
| C Nakagawa Fire Station | H Emergency Task Forces 1 |
| D Nakagawa Fire Station
Hioki Branch | I Nakagawa Public Works Office |
| E Nakagawa Fire Station
Otobashi Branch | J Waterworks & Sewerage
Bureau West Office |

Legend

- | | |
|--|---|
| Designated Emergency Evacuation Shelter (shakes of earthquake, large scale fire) [Regional Evacuation Shelters] | Emergency water supply facilities (permanent and temporary water taps)
These facilities are provided at wide-area evacuation sites, etc., and are opened in the event of a disaster by municipal waterworks staff or private businesses owners that have signed support agreements with the Waterworks Bureau. |
| Designated Emergency Evacuation Shelters (shakes of earthquake) [Temporary Evacuation Sites] | Emergency Water Supply Facilities (Underground Hydrants)
Water supply taps are installed at all public elementary and junior high schools in the water supply area. The taps need to be operated by evacuees themselves in the event of a disaster. |
| Ward boundary | Disaster emergency well (office)
Wells owned by private offices, factories, etc., made available to local residents in the event of a major earthquake to secure water for daily use (not drinking water). |
| School district boundary
School districts are approximate. Please contact the respective ward office for further information. | |

*Please refer to the hazard maps of other wards to verify whether if their designated emergency evacuation shelters are open to our residents. Hazard Maps of all the wards are available on the official website of Nagoya City.

Designated Emergency Shelters (shakes of earthquake)
[Temporary Evacuation Sites]

Code	Facility name	Designated Emergency Evacuation Shelter Shakes of earthquake Large scale fire	
a	Yatsuya Park	○	×
b	Arakoshi Park	○	×
c	Showabashi Park	○	×
d	Nakajima-chuo Park	○	×
e	Noda Park	○	×
f	Maruike Park	○	×
g	Takabata Park	○	×
h	Niie-chuo Park	○	×
i	Mambakawa Higashi Park	○	×
j	Shotoku Park	○	×
City elementary, junior high and some high school grounds (Technical High School, Nakagawa Commercial High School, Tomida High School)		○	×

*Wide-area evacuation shelters are equipped to deal with large scale fire.

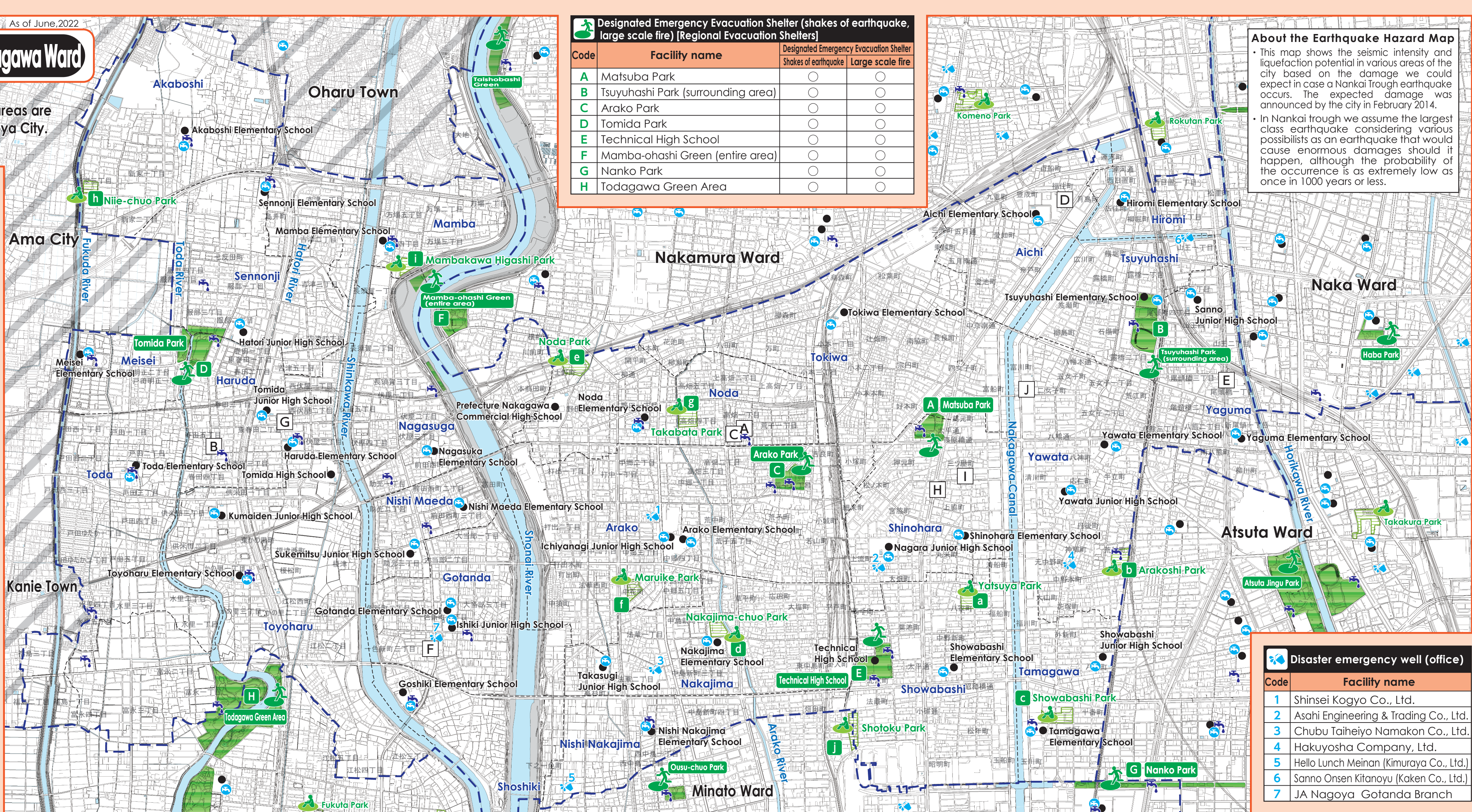
We used the basic urban planning maps used between 2015 and 2016 to create this map. Corrections were made accordingly. We used the urban planning maps of the following places with their consent: Ama City, Oharu Town and Kanie Town. (Approval numbers – Ama City: 3 あ都 58, Oharu Town: 3 大 都 整 256, Kanie Town: 3 蟹 ま ち 収 36)

Designated Emergency Evacuation Shelter (shakes of earthquake, large scale fire) [Regional Evacuation Shelters]

Code	Facility name	Designated Emergency Evacuation Shelter Shakes of earthquake Large scale fire	
A	Matsuba Park	○	○
B	Tsuyuhashi Park (surrounding area)	○	○
C	Arako Park	○	○
D	Tomida Park	○	○
E	Technical High School	○	○
F	Mamba-ohashi Green (entire area)	○	○
G	Nanko Park	○	○
H	Todagawa Green Area	○	○

About the Earthquake Hazard Map

- This map shows the seismic intensity and liquefaction potential in various areas of the city based on the damage we could expect in case a Nankai Trough earthquake occurs. The expected damage was announced by the city in February 2014.
- In Nankai trough we assume the largest class earthquake considering various possibilities as an earthquake that would cause enormous damages should it happen, although the probability of the occurrence is as extremely low as once in 1000 years or less.



Seismic intensity

0 500 1,000m
1 : 31,000

About seismic intensity

Seismic intensity	State
7	Tossed about by the shaking; cannot move without crawling. Impossible to stand and thrown off by the shaking sometimes.
Upper-4	Difficult to keep standing.
Lower-4	Many people find it difficult to move; cannot walk without holding on to something.
Upper-3	Many people are frightened and want to hold on to something.
Lower-3	

Liquefaction

0 500 1,000m
1 : 31,000

About liquefaction possibilities

Liquefaction possibilities	State
High	Liquefaction is highly likely to happen
Medium	Liquefaction is likely to happen
Low	Liquefaction is less likely to happen
None	Liquefaction is extremely unlikely to happen

*We can only talk about liquefaction in terms of possibility as it is difficult to predict the actual probability and areas of occurrence.