



Hazard Map Kita Ward

About the Earthquake Hazard Map

- This map shows the seismic intensity and liquefaction potential in various areas of the city based on the damage we could expect in case a Nankai Trough earthquake occurs. The expected damage was announced by the city in February 2014.
- In Nankai trough we assume the largest class earthquake considering various possibilities as an earthquake that would cause enormous damages should it happen, although the probability of the occurrence is as extremely low as once in 1000 years or less.



Evacuation to Designated Emergency Evacuation Shelter

Nagoya City Disaster Countermeasures Office / Kita Ward Headquarters (Kita Ward Office)
Tel: 911-3131 (Main) 917-6412~8 (Direct) Fax: 914-5752

Public Office (Marked as □)

A Kita Ward Office	D Kita Fire Station Iida Branch	G Kita Public Works Office
B Kita Ward Office Kusunoki Branch	E Kita Fire Station Kusunoki Branch	H Waterworks & Sewerage Bureau Kita Branch Office
C Kita Fire Station	F Emergency Task Forces 3	

Legend

	Designated Emergency Evacuation Shelter (shakes of earthquake, large scale fire) [Regional Evacuation Shelters] Parks and green spaces that are designated emergency evacuation shelter for earthquakes and large fires that have space to protect evacuees from large-scale fires.
	Designated Emergency Evacuation Shelters (shakes of earthquake) [Temporary Evacuation Sites] Designated emergency evacuation shelters for earthquakes. You can temporarily shelter and check on the situation here.
	Emergency water supply facilities (permanent and temporary water taps) These facilities are provided at wide-area evacuation sites, etc., and are opened in the event of a disaster by municipal waterworks staff or private businesses owners that have settled support agreements with the Waterworks Bureau.
	Emergency Water Supply Facilities (Underground hydrants) Water supply taps are installed at all public elementary and junior high schools in the water supply area. The taps need to be operated by evacuees themselves in the event of a disaster.
	Landslide Disaster (Special) Warning Zone Areas where landslides may occur.
	Ward boundary
	School district boundary (School districts are approximate. Please contact the respective ward office for further information.)
	Disaster emergency well (office) Wells owned by private offices, factories, etc., made available to local residents in the event of a major earthquake to secure water for daily use (not drinking water).

*Please refer to the hazard maps of other wards to verify whether if their designated emergency evacuation shelters are open to our residents. Hazard Maps of all the wards are available on the official website of Nagoya City.

Designated Emergency Evacuation Shelter (shakes of earthquake, large scale fire) [Regional Evacuation Shelters]

Code	Facility name	Designated Emergency Evacuation Shelter Shakes of earthquake	Large scale fire
A	Shiga Park	○	○
B	Mizuwakebashi Green (entire area)	○	○
C	Kusunoki Park	○	○
D	Meijo Park (entire area)	○	○
E	Tenjinbashi Green (entire area)	○	○
F	Yadagawabashi Green	○	○
G	Araizeki Green	○	○

Designated Emergency Evacuation Shelters (shakes of earthquake) [Temporary Evacuation Sites]

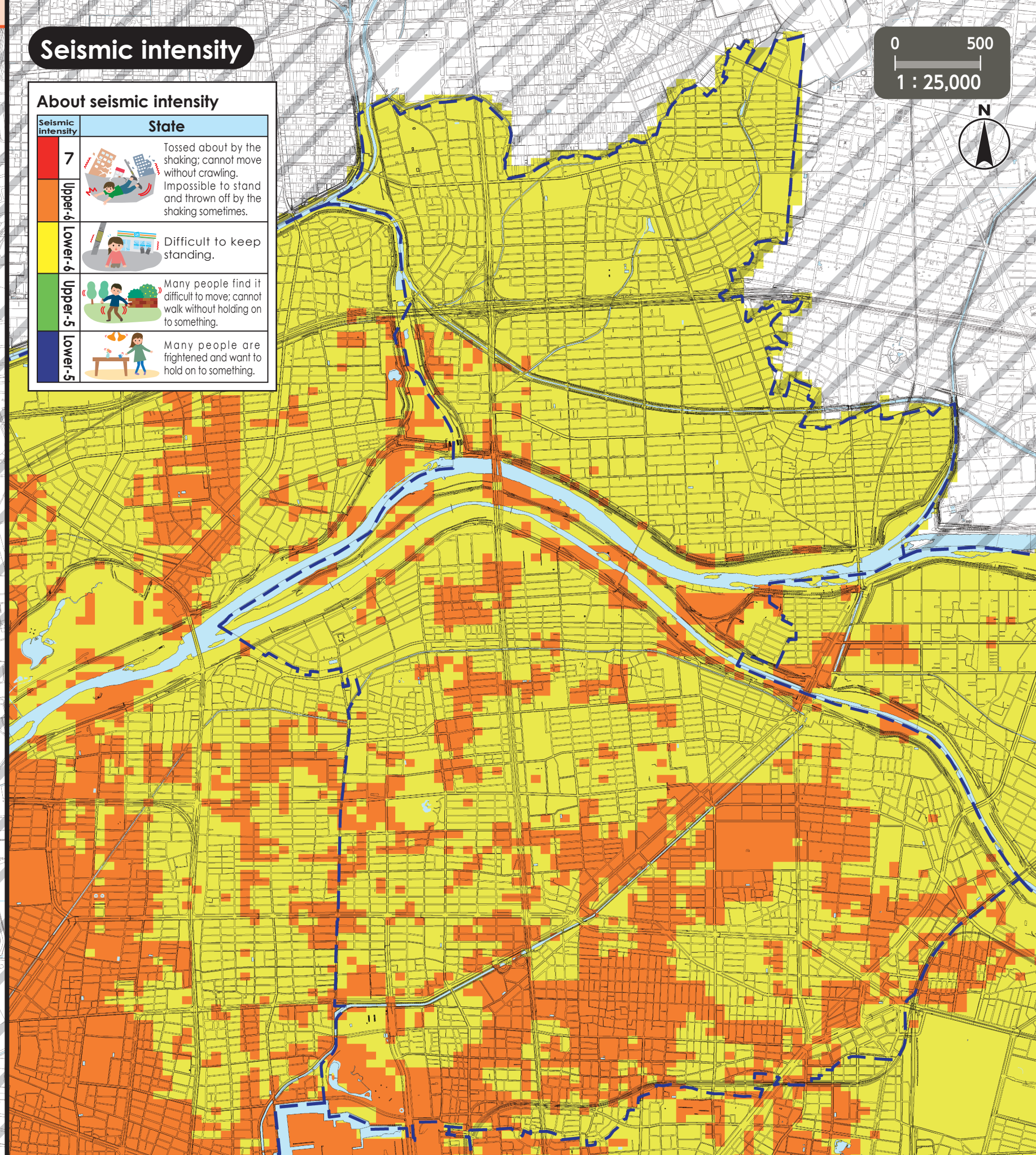
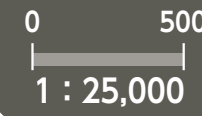
Code	Facility name	Designated Emergency Evacuation Shelter Shakes of earthquake	Large scale fire
a	Ogama Park	○	×
	City elementary, junior high and some high school grounds (Johoku Tsubasa High School, Kita High School)	○	×

*Wide-area evacuation shelters are equipped to deal with large scale fire.

Seismic intensity

About seismic intensity

Seismic intensity	State
7	Tossed about by the shaking; cannot move without crawling. Impossible to stand and thrown off by the shaking sometimes.
Upper 6, Lower 6	Difficult to keep standing.
Upper 5, Lower 5	Many people find it difficult to move; cannot walk without holding on to something.
Lower 5	Many people are frightened and want to hold on to something.

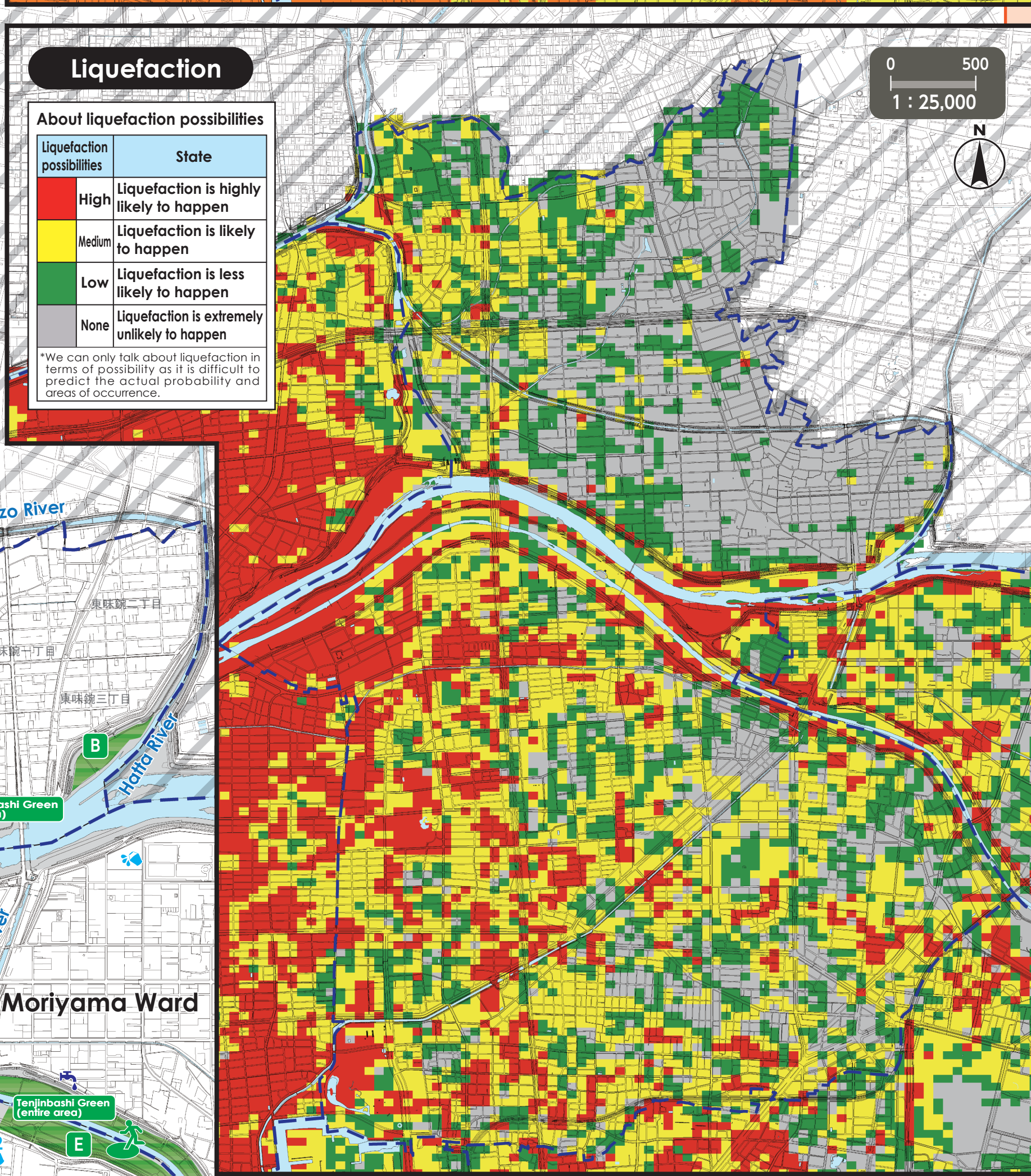
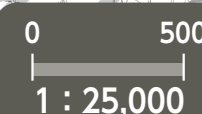


Liquefaction

About liquefaction possibilities

Liquefaction possibilities	State
High	Liquefaction is highly likely to happen
Medium	Liquefaction is likely to happen
Low	Liquefaction is less likely to happen
None	Liquefaction is extremely unlikely to happen

*We can only talk about liquefaction in terms of possibility as it is difficult to predict the actual probability and areas of occurrence.



Disaster emergency well (office)

Code	Facility name
1	Kadosen Honten Co.,Ltd.
2	Komura Sarashi Kogyo Co.,Ltd.
3	Hirano Sarashi Plant Co.,Ltd.
4	Maruju Co. Ltd
5	Medical Corporation Kusunokikai Kusunoki Mental Hospital
6	Medical Corporation Aiseikai Kamiida Rehabilitation Hospital
7	Tatebayashi Seian Co.,Ltd.
8	Rokugo Nishi Park
9	Sango Water Channel
10	Nagoya Wholesale Co.,Ltd.
11	Social Welfare Corporation Seidokai (Special Elderly Nursing Home Respetto Ochiai)
12	Shonagawa Golf Club
13	Sweets Land Hayashiya

