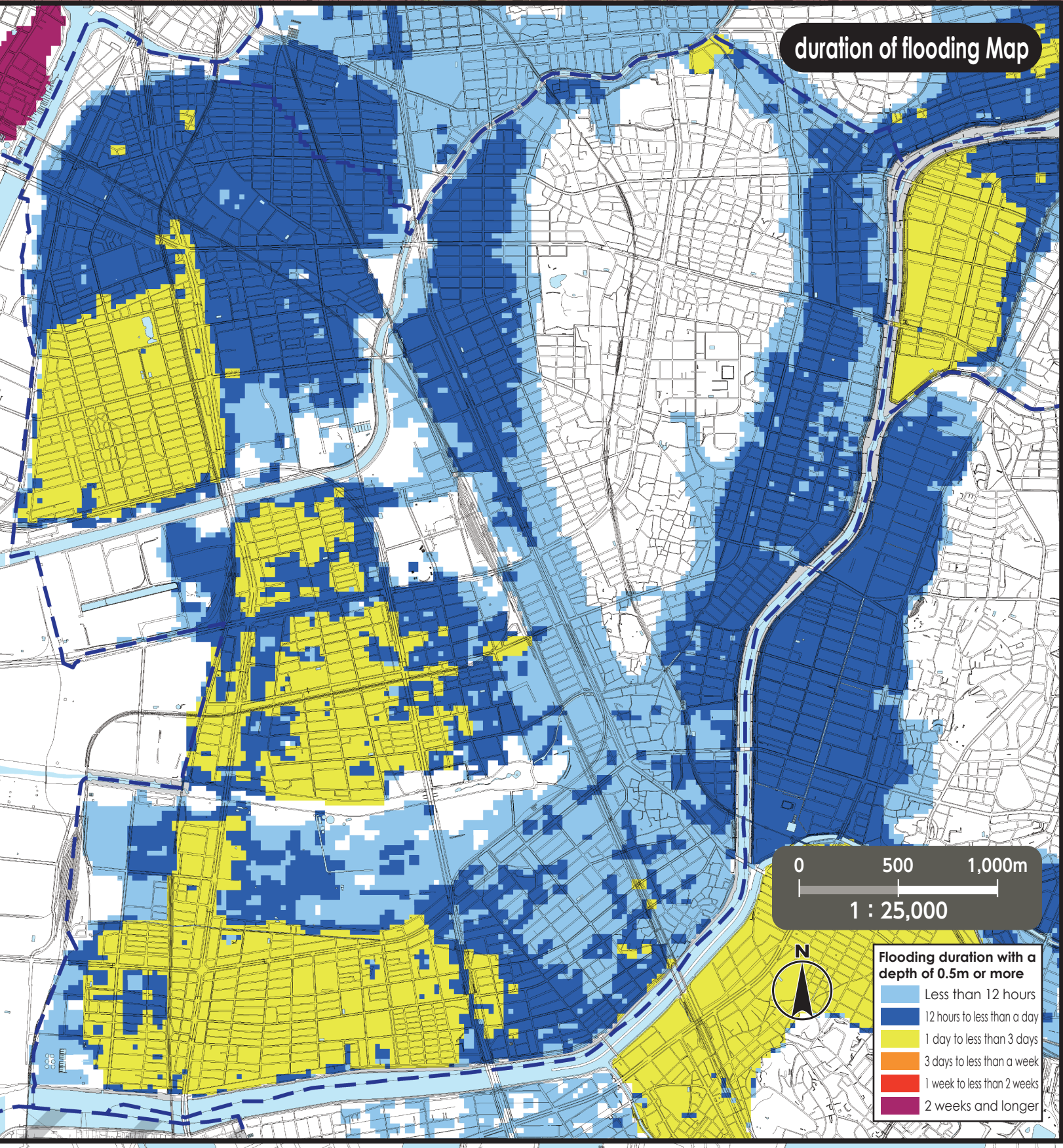


As of June,2022

Flood Hazard Map

Minami Ward



\*Please refer to the hazard maps of other wards to verify whether if their designated emergency evacuation shelters are open to our residents. Hazard Maps of all the wards are available on the official website of Nagoya City.

No.	Facility Name (Marked as □)	Address	Designated Emergency Evacuation Shelter Flood / Inland flood / Landslide
1	Meiji Elementary School	3-50 Meiji 2-chome	2nd floor or higher
2	Meiji Community Center	14-1 Meiji 2-chome	2nd floor or higher
3	Temma Elementary School	38-9 Yutaka 2-chome	2nd floor or higher
4	Meiho Junior High School	39-3 Yutaka 2-chome	2nd floor or higher
5	Temma Community Center	37-8 Yutaka 1-chome	2nd floor or higher
6	Toyoda Elementary School	19-23 Toyoda 1-chome	2nd floor or higher
7	Toyoda Community Center	9-19 Toyoda 4-chome	2nd floor or higher
8	Dotoku Elementary School	5-43 Dotoku-shimmachi	2nd floor or higher
9	Oe Junior High School	5-48 Dotoku-shimmachi	2nd floor or higher
10	Community Center Dotoku	2-72 Dotoku-tori	2nd floor or higher
11	Dotoku Nursery School	6-20 Kannon-cho	2nd floor or higher
12	Yobitsugi Elementary School	17-10 Yobitsugi 4-chome	○
13	Shinko Junior High School	4-8 Yobitsugi 4-chome	○
14	Yobitsugi Community Center	4-60 Yobitsugi 4-chome	○
15	Oiso Elementary School	5-1 Kitauchi-cho	2nd floor or higher
16	Oiso Community Center	3-25 Kitauchi-cho	2nd floor or higher
17	Sakura Elementary School	13-38 Sakuradai 2-chome	○
18	Sakurada Junior High School	4-52 Nakae 1-chome	2nd floor or higher
19	Sakura Community Center	15-4 Sakuradai 2-chome	○
20	Kikuzumi Elementary School	12-37 Kakeage 1-chome	○
21	Tsukihiko Okamichi Church Headquarters	7-14 Hirako 2-chome	2nd floor or higher
22	Kikuzumi Community Center	14-13 Kakeage 1-chome	○
23	Kasugano Elementary School	9-1 Kasugano-cho	○
24	Sakuradai Senior High School	21 Kasumi-cho	○
25	Kasugano Community Center	77 Kasumi-cho	○
26	Kasadera Elementary School	765 Aza honjo, Matahoshizaki-cho	○

No.	Facility Name (Marked as □)	Address	Designated Emergency Evacuation Shelter Flood / Inland flood / Landslide
27	Honjo Junior High School	3-1 Toriyama-cho	○
28	Prefectural Nagoya Technology High School	1 Ahara-cho	2nd floor or higher
29	Kasadera Community Center	5-2-31 Maehama-dori	○
30	Hoshizaki Elementary School	163 Minamino 3-chome	2nd floor or higher
31	Hoshizaki Community Center	52 Hoshizaki 1-chome	2nd floor or higher
32	Ryuto Elementary School	113 Shiba-cho	2nd floor or higher
33	Ryuto Community Center	57 Hakuun-cho	2nd floor or higher
34	Taisei Elementary School	3-76 Nishi Matabe-cho	2nd floor or higher
35	Taisei Fureai Center	4-8-1 Nishi Matabe-cho	2nd floor or higher
36	Prefectural Nagoya Minami High School	5-1-11 Higashi Matabe-cho	○
37	Minami Lifelong Learning Center	5-1-10 Higashi Matabe-cho	2nd floor or higher
38	NGK Insulators Sports Plaza	5-1-16 Higashi Matabe-cho	○
39	Takara Elementary School	2-5 Nakawari-cho	2nd floor or higher
40	Takara Community Center	2-2 Hoshio-cho	2nd floor or higher
41	Honan Elementary School	3-48 Tsutsumikoshi-cho	2nd floor or higher
42	Nanko Junior High School	4-119 Hamada-cho	2nd floor or higher
43	Honan Community Center	1-20-6 Motoshio-cho	2nd floor or higher
44	Hakusui Elementary School	2-1 Matsushita-cho	2nd floor or higher
45	Daido University Daido Senior High School	2-21 Daido-cho	2nd floor or higher
46	Hakusui Community Center	3023-3 Aza tangoe, Naruo-cho	2nd floor or higher
47	Chidori Elementary School	6-1 Miyoshi-cho	2nd floor or higher
48	Meinan Junior High School	5-43 Miyoshi-cho	2nd floor or higher
49	Chidori Community Center	4-22 Tempaku-cho	2nd floor or higher
50	Shibata Elementary School	19 Hakusui-cho	2nd floor or higher
51	Tsudoino-yakata Wako	2-20-2 Motoshibata-higashimachi	2nd floor or higher
52	Daido University	10-3 Takihar-cho	2nd floor or higher

**Evacuation to Designated Emergency Evacuation Shelter**

○ Please evacuate to a designated emergency evacuation shelter according to the type of disaster if you are in danger (especially when evacuation information (evacuation instruction, etc.) is released) and you cannot stay at home to save your life.

○ Designated emergency evacuation shelters within flooding risk areas including collapse of buildings have been confirmed to be structurally safe.

○ Please contact the ward office in advance to confirm the place you are going is safe if you intend to evacuate on your own command.

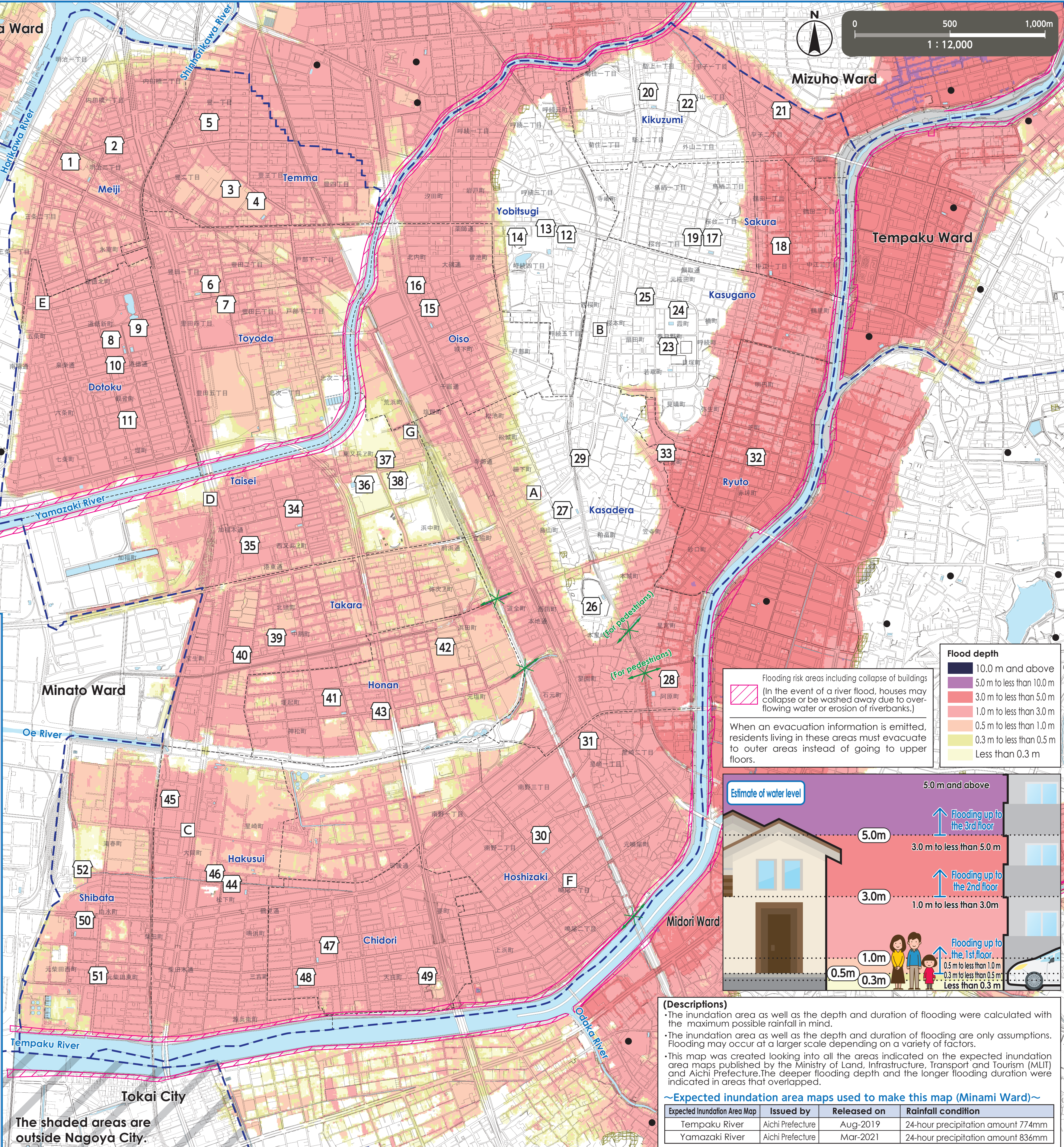
**Nagoya City Disaster Countermeasures Office / Minami Ward Headquarters (Minami Ward Office)**  
Tel: 811-5161 (Main) 823-9311~6 (Direct) Fax: 811-6360

**Public Office (Marked as □)**

- A Minami Ward Office
- B Minami Fire Station
- C Minami Fire Station
- D Minami Fire Station
- E Minami Fire Station Dotoku Branch
- F Minami Fire Station Hoshizaki Branch
- G Minami Public Works Office

**Legend**

- 0 Designated Emergency Evacuation Shelter  
Places where you can take shelter from the danger of a flooding disaster in order to save your life.
- Areas where heavy rain will cause roads to be flooded and closed to traffic.
- Landslide Disaster (Special) Warning Zone  
Areas where landslides may occur.
- Ward boundary
- School district boundary  
School districts are approximate. Please contact the respective ward office for further information.
- Designated Emergency Evacuation Shelter outside the ward



We used the basic urban planning maps used between 2015 and 2016 to create this map. Corrections were made accordingly.

We used the urban planning maps of the following places with their consent: Tokai City.(Approval number - Tokai City: 都29)

Landslide Disaster Hazard Map, Aichi Prefecture, Creative Commons License Attribution 2.1 Japan (<http://creativecommons.org/licenses/by/2.1/jp/>)