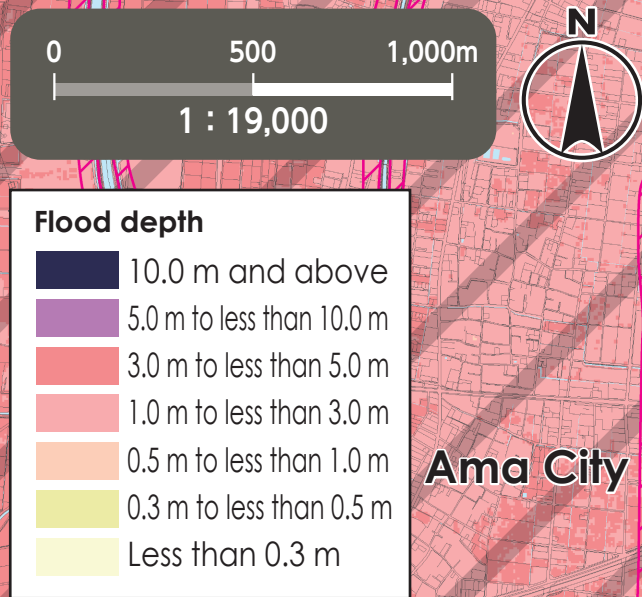
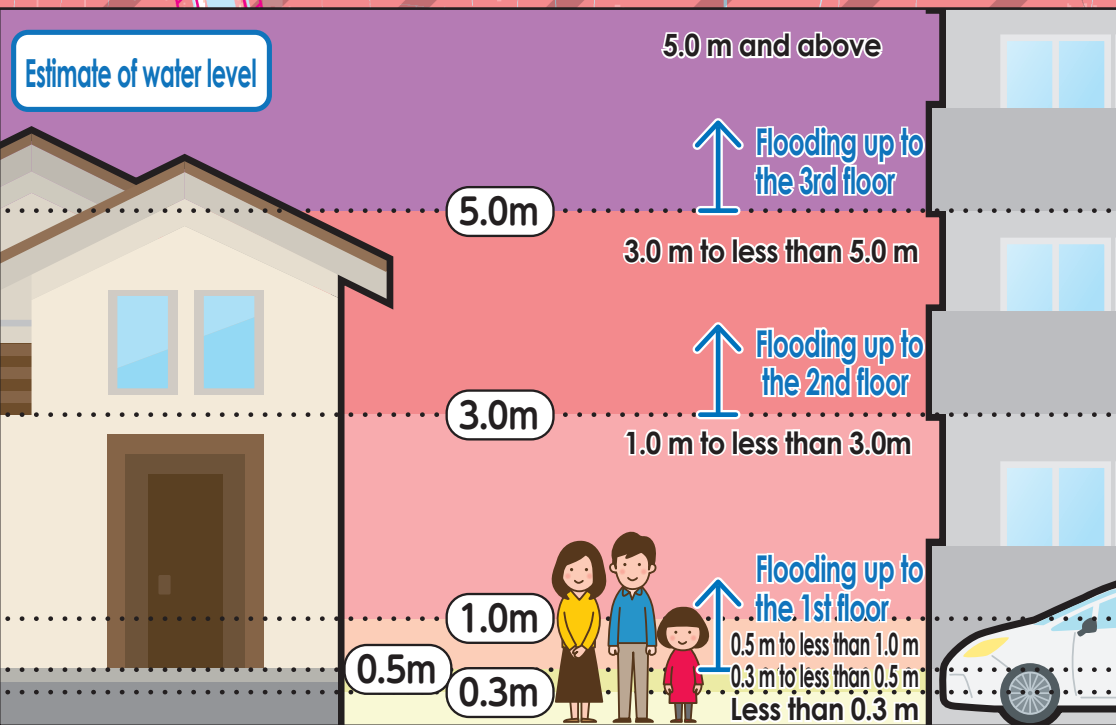


As of June, 2022

Flood Hazard Map Nakagawa Ward



(Descriptions)

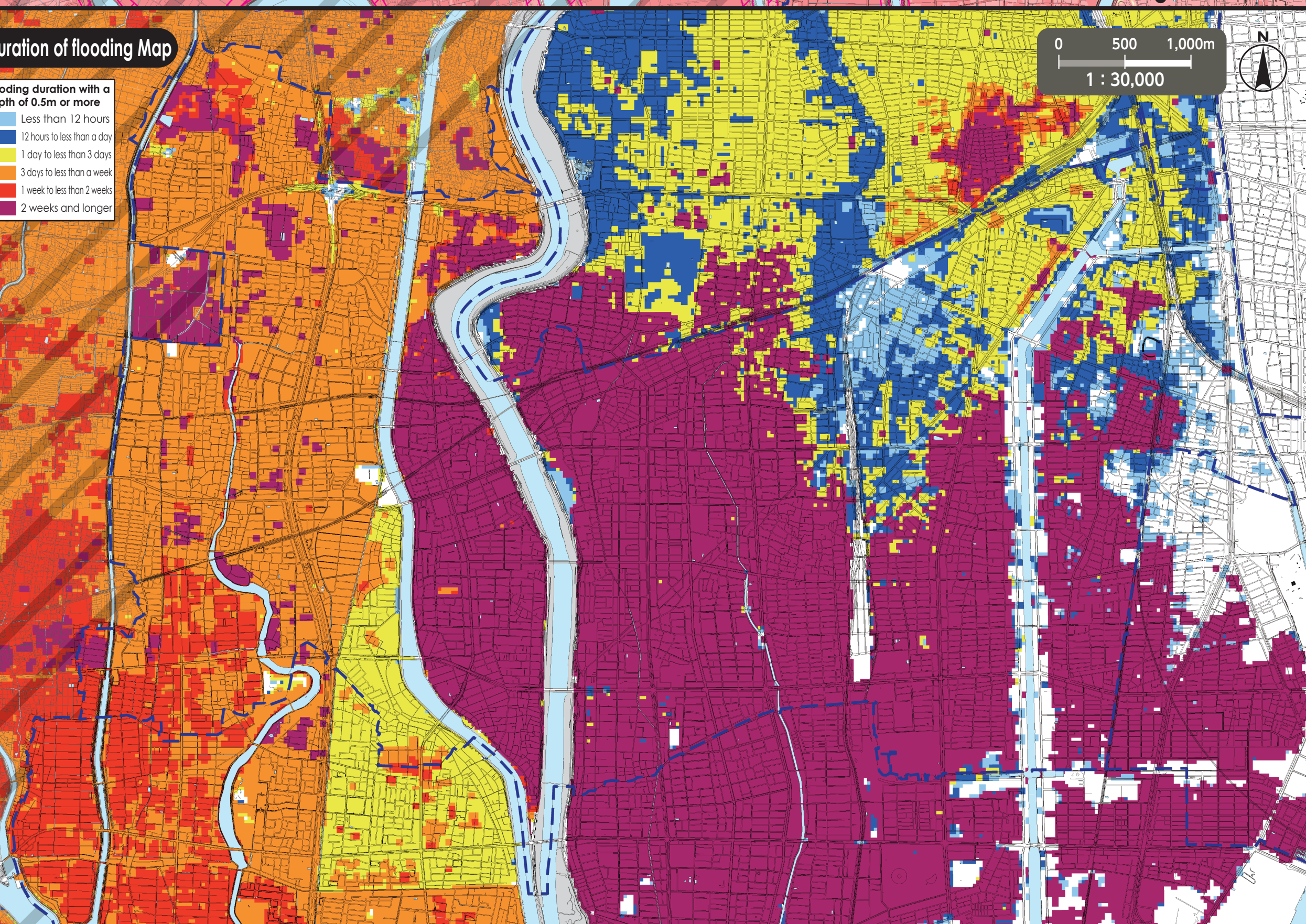
- The inundation area as well as the depth and duration of flooding were calculated with the maximum possible rainfall in mind.
- The inundation area as well as the depth and duration of flooding are only assumptions. Flooding may occur at a larger scale depending on a variety of factors.
- This map was created looking into all the areas indicated on the expected inundation area maps published by the Ministry of Land, Infrastructure, Transport and Tourism (MLIT) and Aichi Prefecture. The deeper flooding depth and the longer flooding duration were indicated in areas that overlapped.

~Expected inundation area maps used to make this map (Nakagawa Ward)~

Expected Inundation Area Map	Issued by	Released on	Rainfall condition
Kiso River	MLIT	Apr-2020	2-days precipitation amount 527mm
Shonai/Yada Rivers	MLIT	Mar-2020	24-hour precipitation amount 578mm
Shinkawa River	Aichi Prefecture	Mar-2018	24-hour precipitation amount 751mm
Nikko River	Aichi Prefecture	Aug-2019	24-hour precipitation amount 713mm
Yada River	Aichi Prefecture	Aug-2019	24-hour precipitation amount 735mm
Kanie River	Aichi Prefecture	Aug-2019	24-hour precipitation amount 836mm
Fukuda River	Aichi Prefecture	Aug-2019	24-hour precipitation amount 836mm
Gojo River basin (downstream)	Aichi Prefecture	Mar-2018	24-hour precipitation amount 736mm

Flooding Prediction Map	Issued by	Released on	Rainfall condition
Nikko River basin	Aichi Prefecture	Sep-2019	24-hour precipitation amount 713mm(Nikko River)
			24-hour precipitation amount 836mm (tributary streams)
Yada and Kanare Rivers basin	Aichi Prefecture	Sep-2019	24-hour precipitation amount 735mm(Yada River basin)
			24-hour precipitation amount 836mm (Kanare River basin)
Shinkawa River basin	Aichi Prefecture	May-2020	24-hour precipitation amount 751mm (Shinkawa River basin)
			24-hour precipitation amount 736mm (Gojo River basin(downstream))
			24-hour precipitation amount 815mm (Gojo River basin(upstream))
			24-hour precipitation amount 815mm (Oyama River basin)
			24-hour precipitation amount 805mm (Aoki River basin)
			24-hour precipitation amount 836mm (tributary streams)

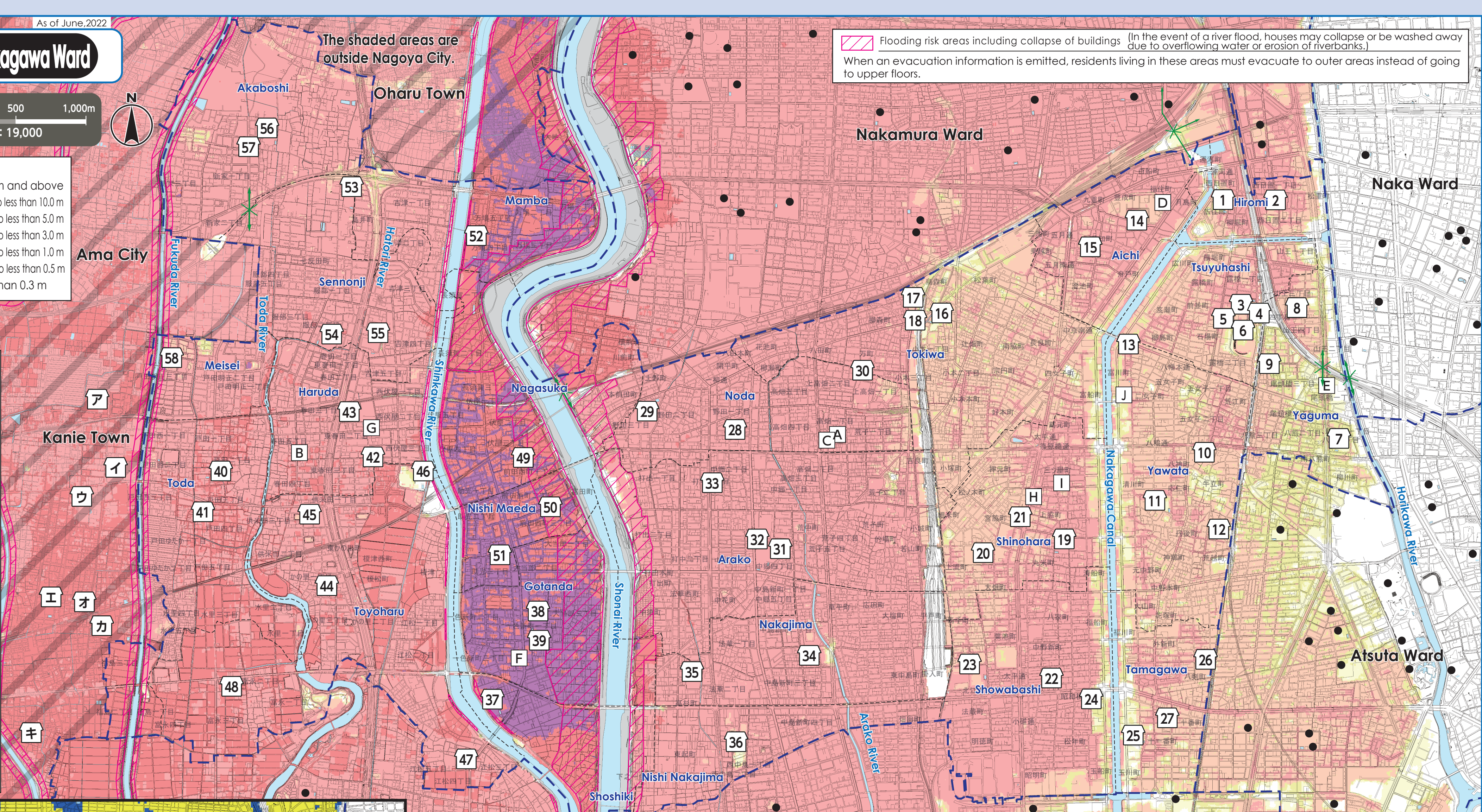
duration of flooding Map



The shaded areas are outside Nagoya City.

Flooding risk areas including collapse of buildings (In the event of a river flood, houses may collapse or be washed away due to overflowing water or erosion of riverbanks.)

When an evacuation information is emitted, residents living in these areas must evacuate to outer areas instead of going to upper floors.



*Please refer to the hazard maps of other wards to verify whether if their designated emergency evacuation shelters are open to our residents. Hazard Maps of all the wards are available on the official website of Nagoya City.

No.	Facility Name (Marked as □)	Address	Designated Emergency Evacuation Shelter Flood/Inland flood
(1)	Hiroimi Elementary School	4-41 Hirosumi-cho	2nd floor or higher
(2)	Hiroimi Community Center	16-1 Nishi Hioki 2-chome	2nd floor or higher
(3)	Tsuyuhashi Elementary School	9-41 Tsuyuhashi 1-chome	2nd floor or higher
(4)	Tsuyuhashi Community Center	13-1 Tsuyuhashi 2-chome	○
(5)	Tsuyuhashi Sports Center	14-1 Tsuyuhashi 2-chome	2nd floor or higher
(6)	Nagoya Stadium	12-1 Tsuyuhashi 2-chome	2nd floor or higher
(7)	Yaguma Elementary School	8-30 Yaguma 1-chome	2nd floor or higher
(8)	Sanno Junior High School	7-3 Sanno 3-chome	2nd floor or higher
(9)	Yaguma Community Center	5-24 Otobashi 4-chome	2nd floor or higher
(10)	Yawata Elementary School	5-4 Yaguma-dori	2nd floor or higher
(11)	Yawata Junior High School	2-11 Motonakano-cho	2nd floor or higher
(12)	Yawata Community Center	1-1-3 Arokoshi-cho	2nd floor or higher
(13)	Nakagawa Lifelong Learning Center	1-2-12 Tomikawa-cho	2nd floor or higher
(14)	Aichi Elementary School	1-35 Hosi-cho	2nd floor or higher
(15)	Aichi Community Center	33-3 Aichi-cho	2nd floor or higher
(16)	Tokiwa Elementary School	15-2 Komoto 1-chome	2nd floor or higher
(17)	Nishi School for the Intellectually Disabled	19-38 Komoto 1-chome	2nd floor or higher
(18)	Tokiwa Community Center	20-52 Komoto 1-chome	2nd floor or higher
(19)	Shinohara Elementary School	1-55 Marukome-cho	2nd floor or higher
(20)	Nagara Junior High School	1-3-1 Ohata-cho	2nd floor or higher
(21)	Shinohara Community Center	3-10 Taihei-ori	2nd floor or higher
(22)	Showabashi Elementary School	7-51-1 Nakano-shincho	2nd floor or higher
(23)	Technical High School	3-13 Kitae-cho	2nd floor or higher
(24)	Showabashi Community Center	1-1 Tamafune-cho 1-chome	2nd floor or higher
(25)	Tamagawa Elementary School	2-1 Tamakawa-cho	2nd floor or higher

No.	Facility Name (Marked as □)	Address	Designated Emergency Evacuation Shelter Flood/Inland flood
(26)	Showabashi Junior High School	1-9 Hachiken-cho	2nd floor or higher
(27)	Tamagawa Community Center	3-1 Juichiban-cho	2nd floor or higher
(28)	Noda Elementary School	545 Noda 1-chome	2nd floor or higher
(29)	Prefectural Nakagawa Commercial High School	280 Noda 3-chome	3rd floor or higher
(30)	Noda Community Center	179-2 Kamitakabata 1-chome	2nd floor or higher
(31)	Arako Elementary School	234 Chugo 4-chome	2nd floor or higher
(32)	Ichinyanagi Junior High School	235 Chugo 4-chome	2nd floor or higher
(33)	Arako Community Center	164 Chugo 2-chome	2nd floor or higher
(34)	Nakajima Elementary School	401 Nakajima-shincho 2-chome	2nd floor or higher
(35)	Takasugi Junior High School	133 Takasugi-cho	2nd floor or higher
(36)	Nishi Nakajima Elementary School	301 Nishi Nakajima 2-chome	2nd floor or higher
(37)	Shoshiki Elementary School	107 Gono, Shimonoiishi-cho	3rd floor or higher
(38)	Gotanda Elementary School	601 Ishiki-shimmachi 1-chome	3rd floor or higher
(39)	Ishiki Junior High School	701 Ishiki-shimmachi 1-chome	3rd floor or higher
(40)	Toda Elementary School	2114 Toda 2-chome	2nd floor or higher
(41)	Tomida District Hall	2502 Toda 4-chome	2nd floor or higher
(42)	Haruda Elementary School	243 Higashi Haruta 2-chome	2nd floor or higher
(43)	Tomida Junior High School	72 Higashi Haruta 2-chome	2nd floor or higher
(44)	Toyoharu Elementary School	2501 Kanosato 1-chome	2nd floor or higher
(45)	Kumaiden Junior High School	802 Kumaiden 2-chome	2nd floor or higher
(46)	Tomida High School	111 Kamiyaru, Tonakazu, Tomida-cho	2nd floor or higher
(47)	Toyoharu Community Center	624 Ematsu 4-chome	2nd floor or higher
(48)	Tomimaga Community Meeting House	91 Tomimaga 3-chome	2nd floor or higher
(49)	Nagasuka Elementary School	1001 Maeda-nishimachi 1-chome	3rd floor or higher
(50)	Nishi Maeda Elementary School	1001 Maeda-nishimachi 3-chome	3rd floor or higher
(51)	Sukemitsu Junior High School	201 Sukemitsu 3-chome	3rd floor or higher
(52)	Mamba Elementary School	1106 Mamba 4-chome	3rd floor or higher
(53)	Sennonji Elementary School	4666 Sannotsubo, Sennonji, Tomida-cho	2nd floor or higher
(54)	Hatori Junior High School	1701 Hattori 2-chome	2nd floor or higher
(55)	Tomida Kita Regional Center	3201 Yoshizu 4-chome	2nd floor or higher
(56)	Akaboshi Elementary School	1560 Aza nishi gotanda, Oaza sennonji, Tomida-cho	2nd floor or higher
(57)	Akaboshi Community Center	1483-1 Aza higashi kashizuka, Oaza sennonji, Tomida-cho	2nd floor or higher
(58)	Meisei Elementary School	1001 Todameisei 3-chome	2nd floor or higher

Evacuation to Designated Emergency Evacuation Shelter

○ Please evacuate to a designated emergency evacuation shelter according to the type of disaster if you are in danger (especially when evacuation information (evacuation instruction, etc.) is released) and you cannot stay at home to save your life.

○ Designated emergency evacuation shelters within flooding risk areas including collapse of buildings have been confirmed to be structurally safe.

○ Please contact the ward office in advance to confirm the place you are going is safe if you intend to evacuate on your own command.

Nagoya City Disaster Countermeasures Office /Nakagawa Ward Headquarters (Nakagawa Ward Office) Tel: 362-1111 (Main) 363-4306~9 (Direct) Fax: 362-6562

Public Office (Marked as □)		Legend	
[A] Nakagawa Ward Office	[F] Nakagawa Fire Station Shimonoiishi Branch	[0] Designated Emergency Evacuation Shelter	Places where you can take shelter from the danger of a flooding disaster in order to save your life.
[B] Nakagawa Ward Office Tomida Branch	[G] Nakagawa Fire Station Tomida Branch	Underpass	Areas where heavy rain will cause roads to be flooded and closed to traffic.
[C] Nakagawa Fire Station Hiki Branch	[H] Emergency Task Forces 1	Ward boundary	School district boundary
[D] Nakagawa Fire Station Otobashi Branch	[I] Nakagawa Public Works Office	-----	School districts are approximate. Please contact the respective ward office for further information.
[E] Nakagawa Fire Station Otobashi Branch	[J] Waterworks & Sewerage Bureau West Office	● Designated Emergency Evacuation Shelter outside the ward	

We used the basic urban planning maps used between 2015 and 2016 to create this map. Corrections were made accordingly.

We used the urban planning maps of the following places with their consent: Ama City, Oharu Town, Kanie Town and Aisai City.(Approval numbers - Ama City: 3あ都58, Oharu Town: 3大都整256, Kanie Town: 3蟹まち取36, Aisai City: 3愛西都774)