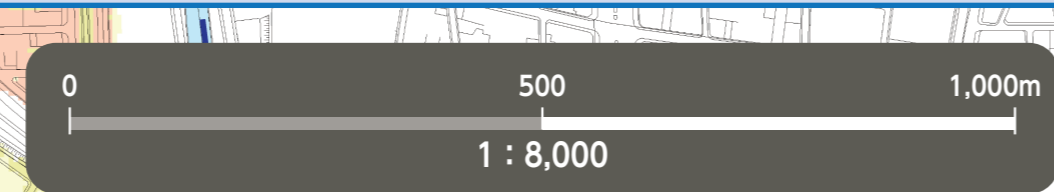
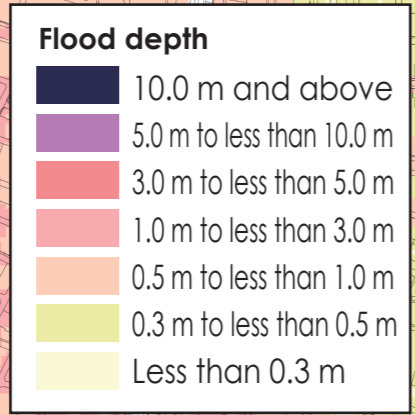
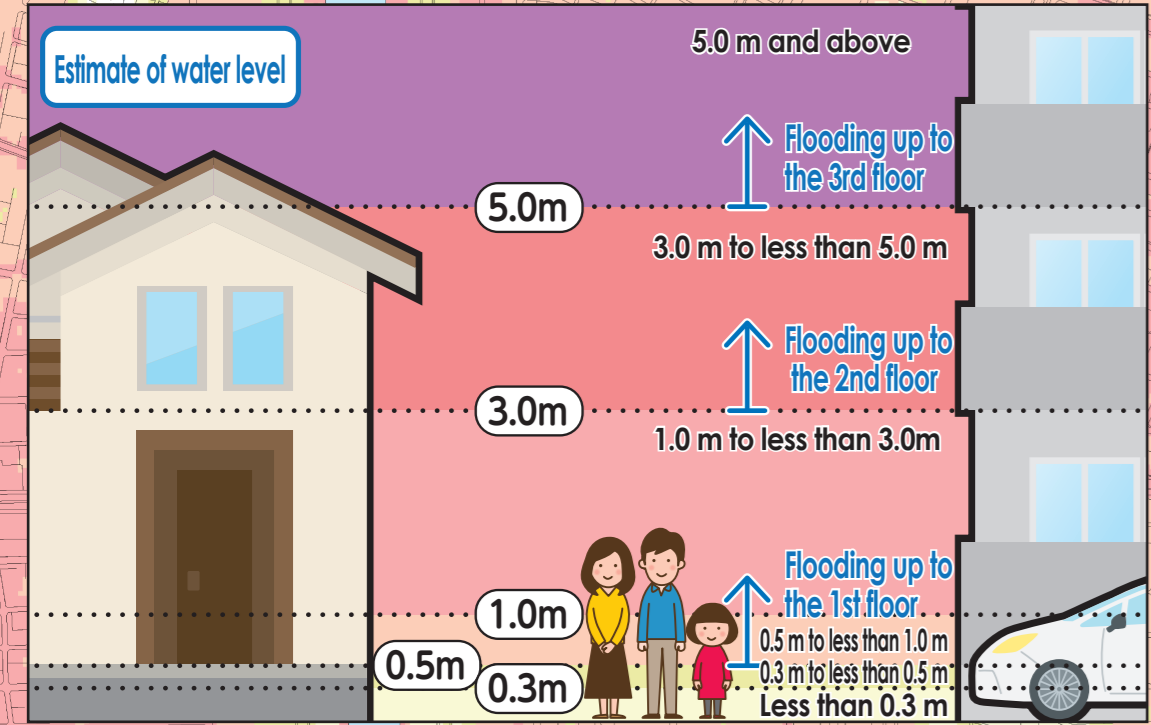


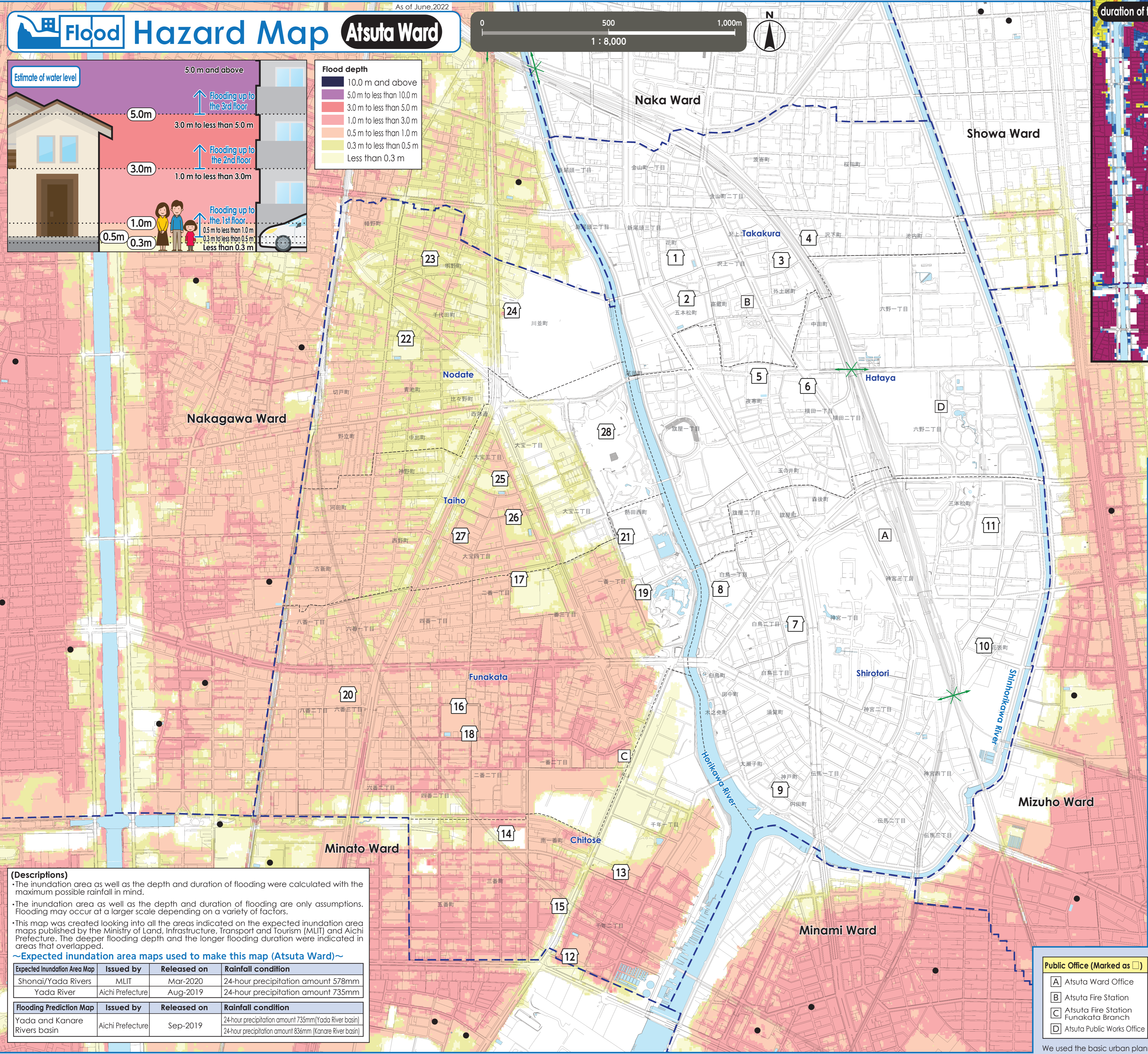
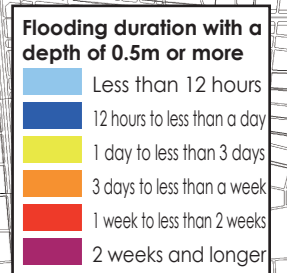
As of June, 2022

Flood Hazard Map

Atsuta Ward



duration of flooding Map



*Please refer to the hazard maps of other wards to verify whether if their designated emergency evacuation shelters are open to our residents. Hazard Maps of all the wards are available on the official website of Nagoya City.

No.	Facility Name (Marked as □)	Address	Designated Emergency Evacuation Shelter Flood/ Inland flood
1	Takakura Elementary School	7-33 Hana-cho	○
2	Sawakami Junior High School	4-4 Gohommatsu-cho	○
3	Takakura Community Center	7-8 Sawakami 2-chome	○
4	Labor Assembly Hall	9-3 Sawashita-cho	2nd floor or higher
5	Hataya Elementary School	5-1 Yosamu-cho	○
6	Hataya Community Center	1-13 Yokota 1-chome	2nd floor or higher
7	Shirotori Elementary School	13-12 Shirotori 2-chome	○
8	Miya Junior High School	3-46 Shirotori 1-chome	2nd floor or higher
9	Shirotori Community Center	802 Godo-cho	2nd floor or higher
10	Tokai Polytechnic College	19-14 Hanaomote-cho	2nd floor or higher
11	Minami School for the Intellectually Disabled	23-26 Sambommatsu-cho	2nd floor or higher
12	Chitose Elementary School	38-26 Chitose 2-chome	2nd floor or higher
13	Chitose Community Center	18-2 Chitose 1-chome	2nd floor or higher
14	Aichi Machine Industry Co.,Ltd. (gymnasium)	2-14 Samban-cho	2nd floor or higher
15	Hattorigumi Co.,Ltd. Head office building	20-3 Minami Ichiban-cho	○
16	Funakata Elementary School	10-43 Yomban 2-chome	2nd floor or higher
17	Hibino Junior High School South Bldg.	2-60 Ichiban 3-chome	2nd floor or higher
18	Funakata Community Center	10-16 Yomban 2-chome	2nd floor or higher
19	Atsuta Lifelong Learning Center	2-13 Atsuta-nishimachi	2nd floor or higher
20	Nagoya Municipal Industrial Research Institute	4-41 Rokuban 3-chome	2nd floor or higher
21	Nagoya Gakuin University Nagoya Campus Shirotori	1-25 Atsuta-nishimachi	○
22	Nodate Elementary School	2-21 Aoike-cho	2nd floor or higher
23	Nodate Community Center	13-19 Akeno-cho	2nd floor or higher
24	Nagoya Central Wholesale Market Honjo	2-22 Kawanami-cho	○
25	Taiho Elementary School	8-43 Taiho 3-chome	2nd floor or higher
26	Hibino Junior High School	2-45 Taiho 4-chome	2nd floor or higher
27	Chitose Community Center	7-22 Taiho 4-chome	2nd floor or higher
28	Nagoya Congress Center	1-1 Atsuta-nishimachi	○

Evacuation to Designated Emergency Evacuation Shelter

○ Please evacuate to a designated emergency evacuation shelter according to the type of disaster if you are in danger (especially when evacuation information (evacuation instruction, etc.) is released) and you cannot stay at home to save your life.

○ Please contact the ward office in advance to confirm the place you are going is safe if you intend to evacuate on your own command.

Nagoya City Disaster Countermeasures Office /Atsuta Ward Headquarters (Atsuta Ward Office)
Tel: 681-1431 (Main) 683-9411~4 (Direct) Fax: 682-1496

(Descriptions)

- The inundation area as well as the depth and duration of flooding were calculated with the maximum possible rainfall in mind.
- The inundation area as well as the depth and duration of flooding are only assumptions. Flooding may occur at a larger scale depending on a variety of factors.
- This map was created looking into all the areas indicated on the expected inundation area maps published by the Ministry of Land, Infrastructure, Transport and Tourism (MLIT) and Aichi Prefecture. The deeper flooding depth and the longer flooding duration were indicated in areas that overlapped.

~Expected inundation area maps used to make this map (Atsuta Ward)~

Expected Inundation Area Map	Issued by	Released on	Rainfall condition
Shonai/Yada Rivers	MLIT	Mar-2020	24-hour precipitation amount 578mm
Yada River	Aichi Prefecture	Aug-2019	24-hour precipitation amount 735mm

Flooding Prediction Map	Issued by	Released on	Rainfall condition
Yada and Kanare Rivers basin	Aichi Prefecture	Sep-2019	24-hour precipitation amount 735mm(Yada River basin) 24-hour precipitation amount 836mm (Kanare River basin)

Public Office (Marked as □)

- A Atsuta Ward Office
- B Atsuta Fire Station
- C Atsuta Fire Station Funakata Branch
- D Atsuta Public Works Office

Legend

- 0 Designated Emergency Evacuation Shelter
Places where you can take shelter from the danger of a flooding disaster in order to save your life.
- Underpass
Areas where heavy rain will cause roads to be flooded and closed to traffic.
- Ward boundary
School district boundary
School districts are approximate. Please contact the respective ward office for further information.
- Designated Emergency Evacuation Shelter outside the ward

We used the basic urban planning maps used between 2015 and 2016 to create this map. Corrections were made accordingly.