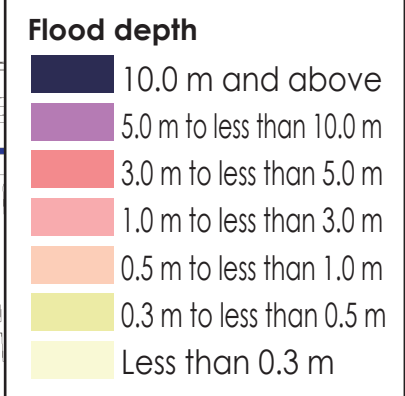


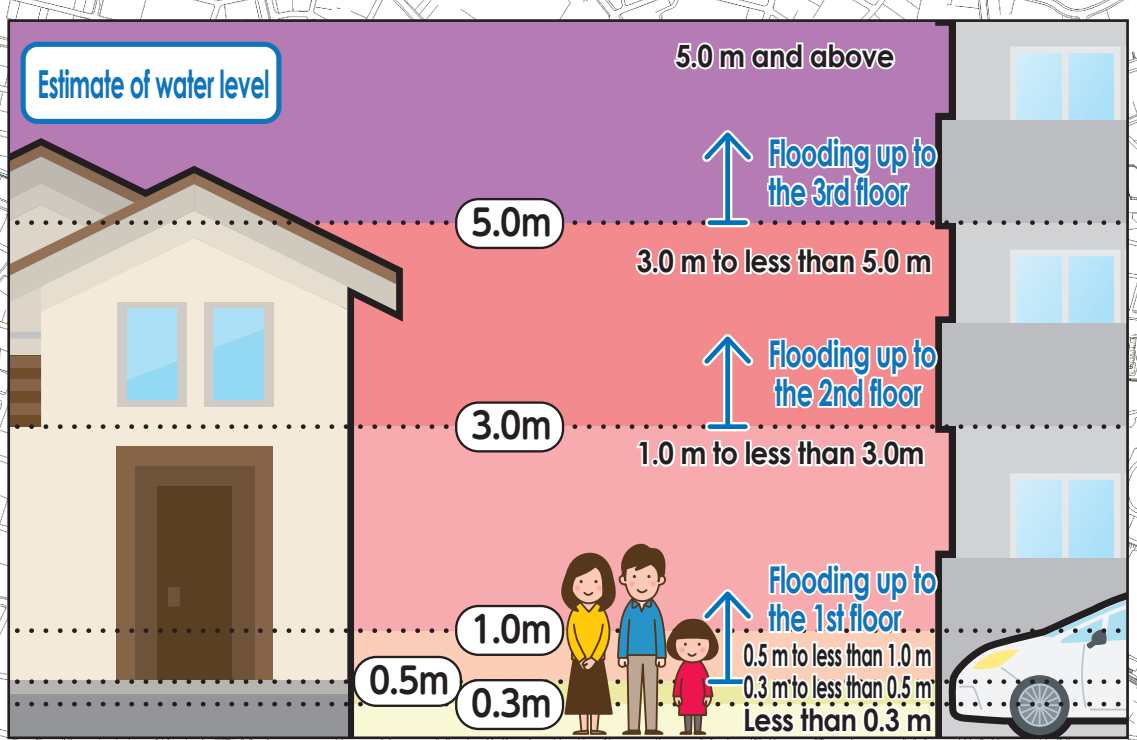
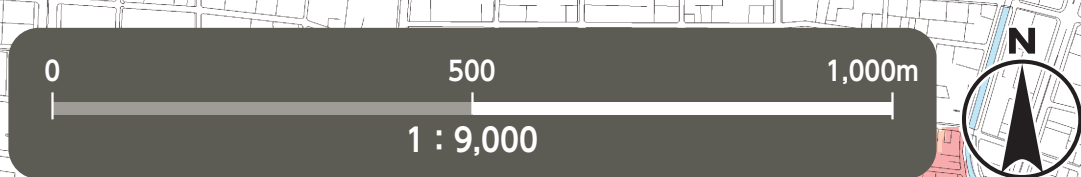
As of June, 2022

# Flood Hazard Map Mizuho Ward

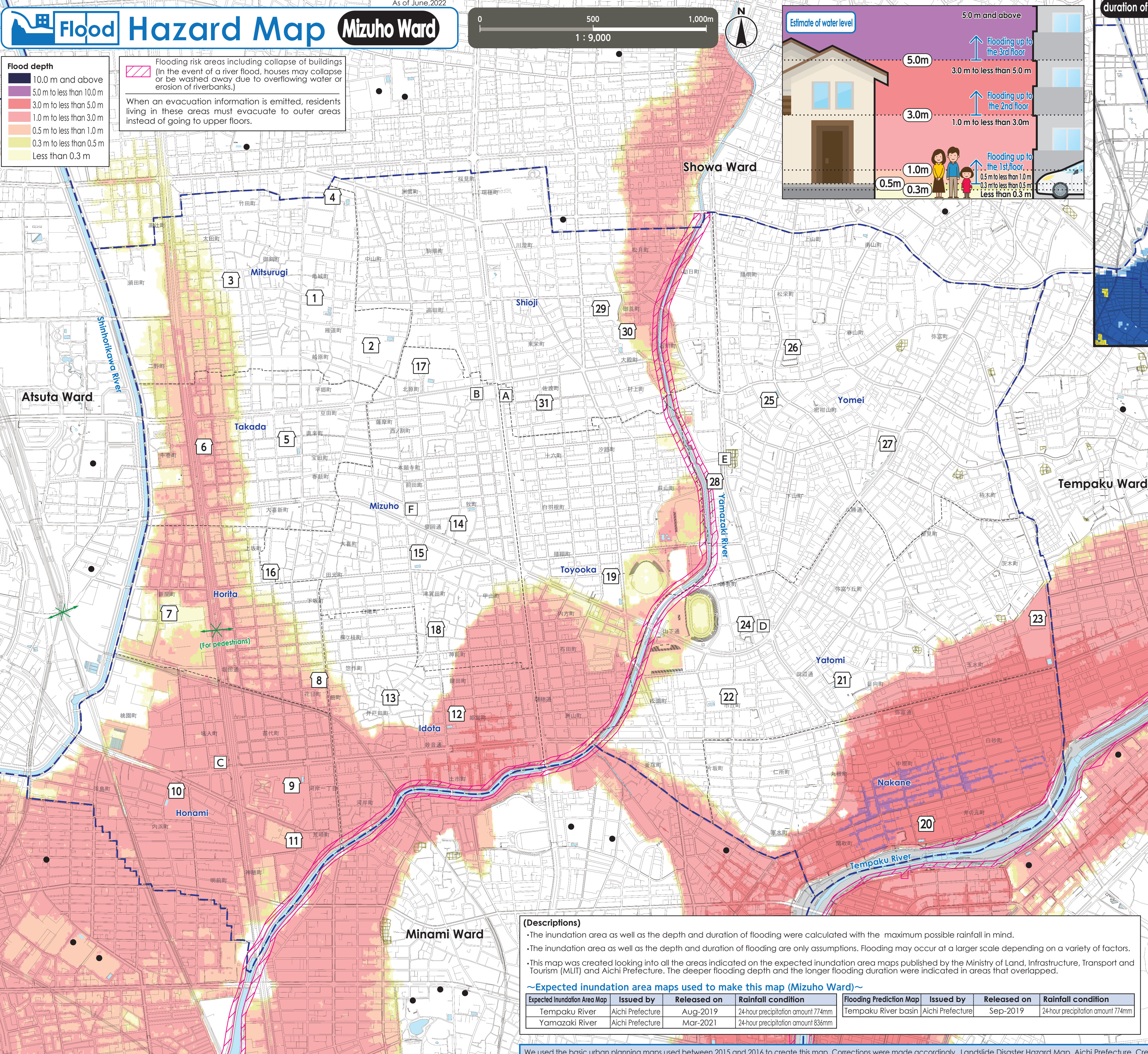
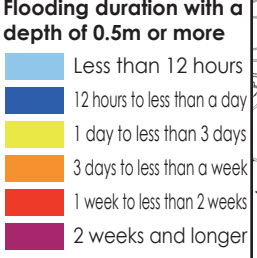


Flooding risk areas including collapse of buildings  
(In the event of a river flood, houses may collapse or be washed away due to overflowing water or erosion of riverbanks.)

When an evacuation information is emitted, residents living in these areas must evacuate to outer areas instead of going to upper floors.



**duration of flooding Map**



\*Please refer to the hazard maps of other wards to verify whether if their designated emergency evacuation shelters are open to our residents. Hazard Maps of all the wards are available on the official website of Nagoya City.

No.	Facility Name (Marked as □ )	Address	Designated Emergency Evacuation Shelter Flood/ Inland flood/Landslide
1	Mitsurugi Elementary School	5-4-1 Kameshiro-cho	○
2	Mizuhogaoka Junior High School	3-28 Takata-cho	○
3	NGK Insulators Mizuho Hall	2-4 Kameshiro-cho	2nd floor or higher
4	Nagoya City University Takiko (Yamanohata) Campus (Gymnasium)	1 Aza yamanohata, Mizuho-cho	○
5	Takada Elementary School	4-1 Hoden-cho	○
6	Takada Community Center	1-7-1 Naorai-cho	2nd floor or higher
7	Horita Elementary School	24-13 Shinkai-cho	2nd floor or higher
8	Mizuho Lifelong Learning Center	2-27-3 Sosaku-cho	2nd floor or higher
9	Honami Elementary School	1-38 Kawagishi 1-chome	2nd floor or higher
10	Tako Junior High School	5-16 Uchiyama-cho	2nd floor or higher
11	Honami Community Center	5-18 Kamiho-cho	2nd floor or higher
12	Idota Elementary School	1-46 Himemiya-cho	2nd floor or higher
13	Idota Community Center	3-25-1 Idota-cho	○
14	Mizuho Elementary School	2-46 Maki-cho	○
15	Tsukata Junior High School	1-38 Tsukata-cho	2nd floor or higher
16	Segi Gakuen (Gymnasium)	1-37 Daigi-cho	○
17	Prefectural Zuiyo High School (Gymnasium)	2-1 Kitahara-cho	○
18	Mizuho Community Center	3-83-1 Tsukata-cho	○
19	Toyooka Elementary School	3-60 Zendana-cho	○
20	Nakane Elementary School	50 Inomoto-cho	3rd floor or higher
21	Yatomi Elementary School	4-23-1 Hinata-machi	○
22	Hagiya Junior High School	1-48 Ichioka-cho	○
23	Prefectural Showa High School	1-18 Tamamizu-cho	2nd floor or higher
24	Yatomi Community Center	82-2 Moronaga-cho	○
25	Yomei Elementary School	1-1 Mikan-yama-cho	○
26	Yomei Community Center	2-46 Matsusakae-cho	○
27	Nagoya City Rehabilitation Center	1-2 Aza mikan-yama, Yatomi-cho	○
28	Paloma Mizuho Arena	3-4 Tanabe-dori	2nd floor or higher
29	Shioji Elementary School	1-2 Otabako-cho	○
30	Shioji Junior High School	4-16 Otabako-cho	2nd floor or higher
31	Shioji Community Center	4-9 Sawatari-cho	○

**Evacuation to Designated Emergency Evacuation Shelter**

○ Please evacuate to a designated emergency evacuation shelter according to the type of disaster if you are in danger (especially when evacuation information (evacuation instruction, etc.) is released) and you cannot stay at home to save your life.

○ Designated emergency evacuation shelters within flooding risk areas including collapse of buildings have been confirmed to be structurally safe.

○ Please contact the ward office in advance to confirm the place you are going is safe if you intend to evacuate on your own command.

**Nagoya City Disaster Countermeasures Office / Mizuho Ward Headquarters (Mizuho Ward Office)**  
Tel: 841-1521 (Main) 852-9212~7 (Direct) Fax: 851-3317

Public Office (Marked as □ )	
A Mizuho Ward Office	C Mizuho Fire Station Horita Branch
B Mizuho Fire Station	D Emergency Task Forces 4
E Mizuho Public Works Office	F Waterworks & Sewerage Bureau Mizuho Branch Office

Legend	
0	Designated Emergency Evacuation Shelter
Underpass	Places where you can take shelter from the danger of a flooding disaster in order to save your life.
Landslide Disaster (Special) Warning Zone	Areas where heavy rain will cause roads to be flooded and closed to traffic.
Landslide Disaster (Special) Warning Zone	Areas where landslides may occur.
Ward boundary	School district boundary
Designated Emergency Evacuation Shelter outside the ward	School districts are approximate. Please contact the respective ward office for further information.

**(Descriptions)**

- The inundation area as well as the depth and duration of flooding were calculated with the maximum possible rainfall in mind.
- The inundation area as well as the depth and duration of flooding are only assumptions. Flooding may occur at a larger scale depending on a variety of factors.
- This map was created looking into all the areas indicated on the expected inundation area maps published by the Ministry of Land, Infrastructure, Transport and Tourism (MLIT) and Aichi Prefecture. The deeper flooding depth and the longer flooding duration were indicated in areas that overlapped.

**~Expected inundation area maps used to make this map (Mizuho Ward)~**

Expected Inundation Area Map	Issued by	Released on	Rainfall condition	Flooding Prediction Map	Issued by	Released on	Rainfall condition
Tempaku River	Aichi Prefecture	Aug-2019	24-hour precipitation amount 774mm	Tempaku River basin	Aichi Prefecture	Sep-2019	24-hour precipitation amount 774mm
Yamazaki River	Aichi Prefecture	Mar-2021	24-hour precipitation amount 836mm				