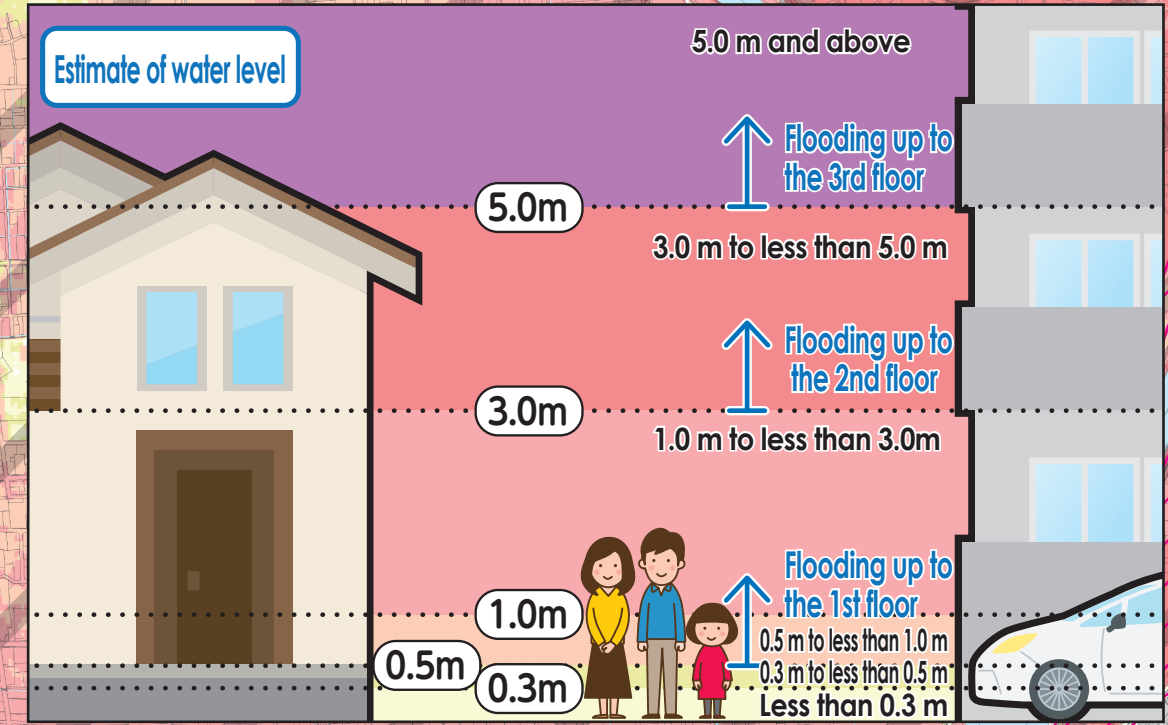
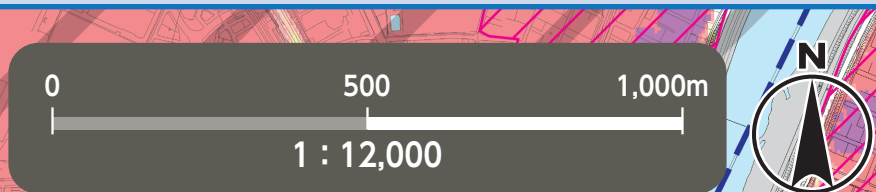


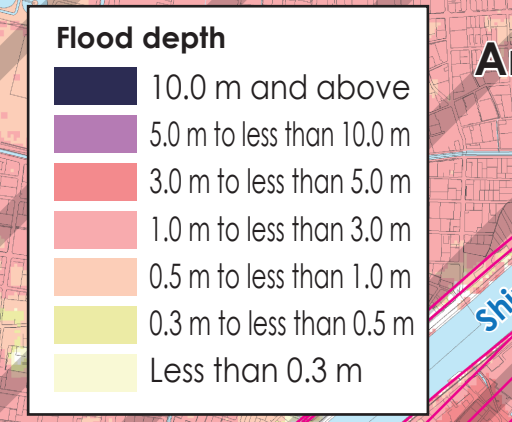
As of June, 2022

# Flood Hazard Map Nakamura Ward

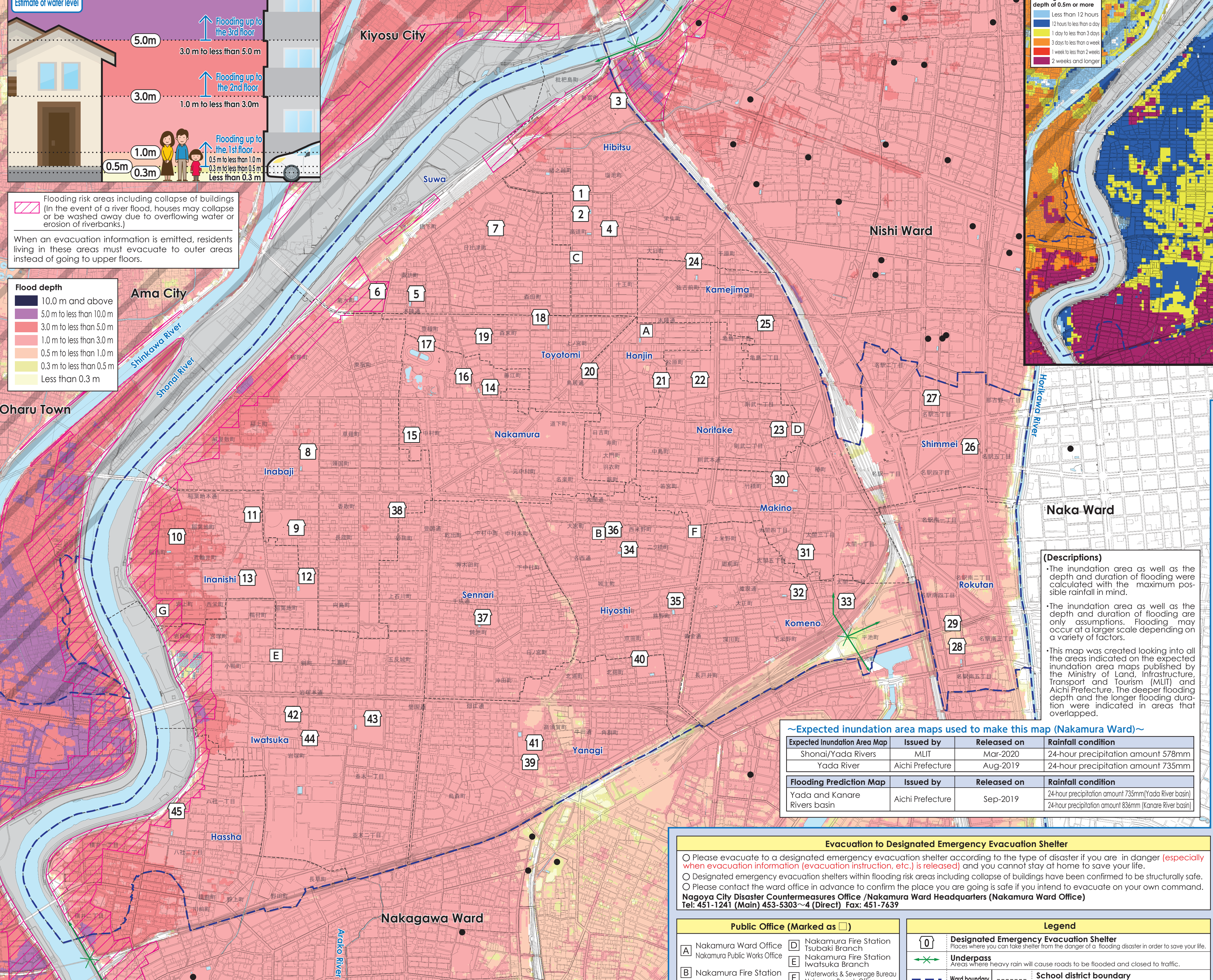


Flooding risk areas including collapse of buildings  
(In the event of a river flood, houses may collapse or be washed away due to overflowing water or erosion of riverbanks.)

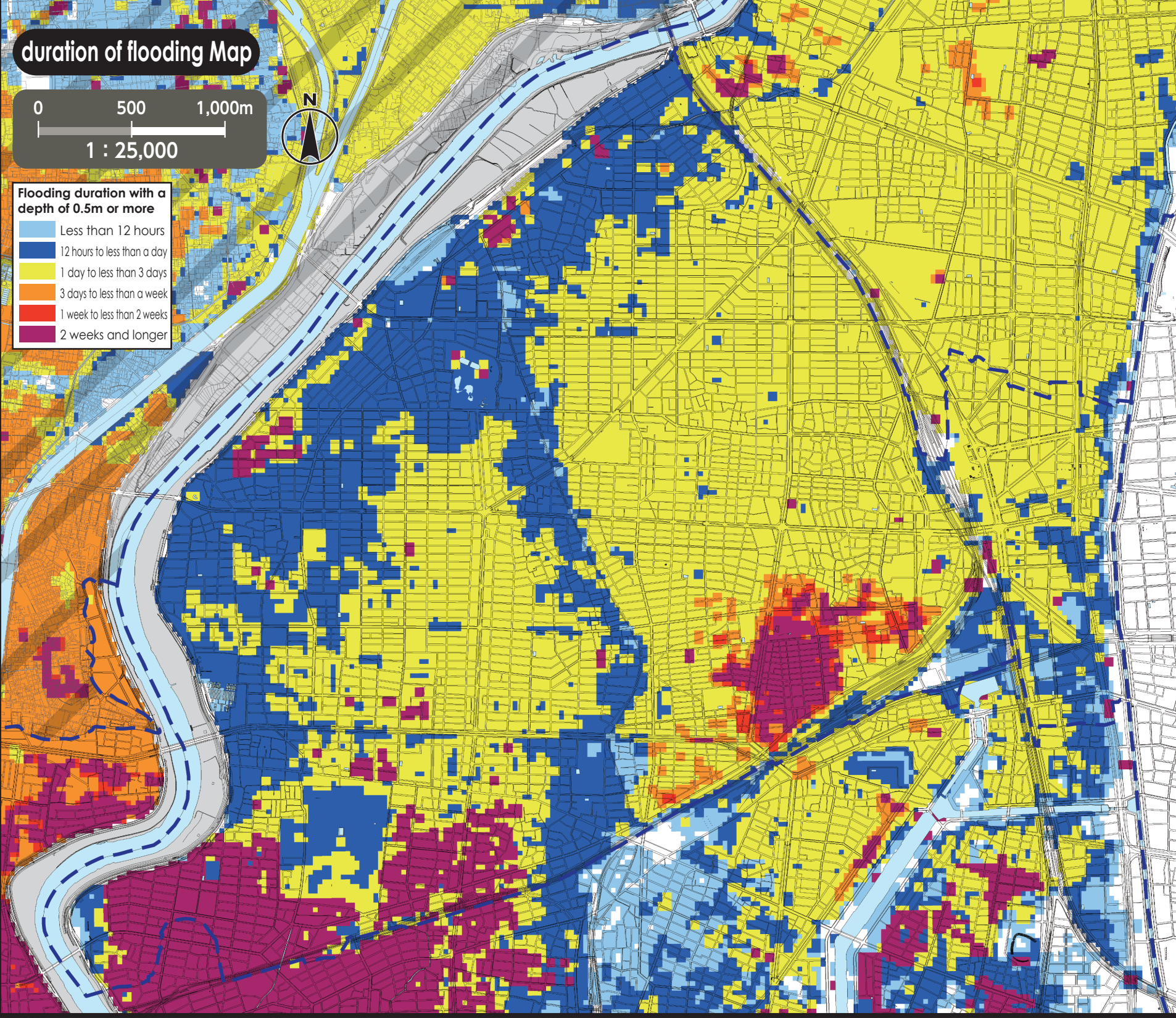
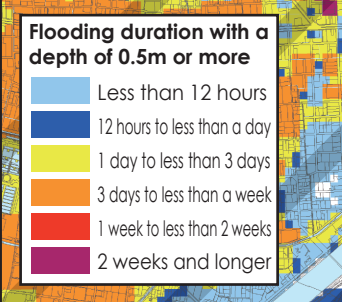
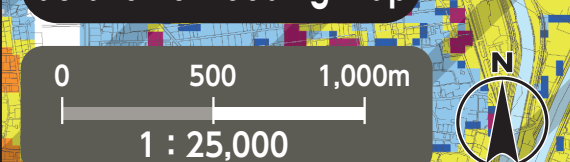
When an evacuation information is emitted, residents living in these areas must evacuate to outer areas instead of going to upper floors.



The shaded areas are outside Nagoya City.



### duration of flooding Map



### Naka Ward

#### (Descriptions)

- The inundation area as well as the depth and duration of flooding were calculated with the maximum possible rainfall in mind.
- The inundation area as well as the depth and duration of flooding are only assumptions. Flooding may occur at a larger scale depending on a variety of factors.
- This map was created looking into all the areas indicated on the expected inundation area maps published by the Ministry of Land, Infrastructure, Transport and Tourism (MLIT) and Aichi Prefecture. The deeper flooding depth and the longer flooding duration were indicated in areas that overlapped.

### ~Expected inundation area maps used to make this map (Nakamura Ward)~

Expected Inundation Area Map	Issued by	Released on	Rainfall condition
Shonai/Yada Rivers	MLIT	Mar-2020	24-hour precipitation amount 578mm
Yada River	Aichi Prefecture	Aug-2019	24-hour precipitation amount 735mm
Flooding Prediction Map	Issued by	Released on	Rainfall condition
Yada and Kanare Rivers basin	Aichi Prefecture	Sep-2019	24-hour precipitation amount 735mm(Yada River basin) 24-hour precipitation amount 836mm (Kanare River basin)

### Evacuation to Designated Emergency Evacuation Shelter

- Please evacuate to a designated emergency evacuation shelter according to the type of disaster if you are in danger (especially when evacuation information (evacuation instruction, etc.) is released) and you cannot stay at home to save your life.
  - Designated emergency evacuation shelters within flooding risk areas including collapse of buildings have been confirmed to be structurally safe.
  - Please contact the ward office in advance to confirm the place you are going is safe if you intend to evacuate on your own command.
- Nagoya City Disaster Countermeasures Office /Nakamura Ward Headquarters (Nakamura Ward Office)**  
Tel: 451-1241 (Main) 453-5303~4 (Direct) Fax: 451-7639

Public Office (Marked as □)		Legend	
A Nakamura Ward Office Nakamura Public Works Office	D Nakamura Fire Station Tsubaki Branch	0 Designated Emergency Evacuation Shelter Places where you can take shelter from the danger of a flooding disaster in order to save your life.	Underpass Areas where heavy rain will cause roads to be flooded and closed to traffic.
B Nakamura Fire Station	E Nakamura Fire Station Iwatsuka Branch	--- Ward boundary	----- School district boundary School districts are approximate. Please contact the respective ward office for further information.
C Nakamura Fire Station Hibitsu Branch	F Waterworks & Sewerage Bureau Nakamura Branch Office	● Designated Emergency Evacuation Shelter outside the ward	
	G Waterworks & Sewerage Bureau North Water Distribution & Sewer Maintenance Center		

\*Please refer to the hazard maps of other wards to verify whether if their designated emergency evacuation shelters are open to our residents. Hazard Maps of all the wards are available on the official website of Nagoya City.

No.	Facility Name (Marked as □)	Address	Designated Emergency Evacuation Shelter Flood/ Inland flood
1	Hibitsu Elementary School	2-1-30 Takamichi-cho	2nd floor or higher
2	Hibitsu Junior High School	2-2-36 Takamichi-cho	2nd floor or higher
3	Meijo University Senior High School	1-3-16 Shintomi-cho	2nd floor or higher
4	Hibitsu Community Center	1-6-3 Takamichi-cho	2nd floor or higher
5	Suwa Elementary School	2-6-7 Suwa-cho	2nd floor or higher
6	Prefectural Nakamura Senior High School	1-2-18 Kikusui-cho	2nd floor or higher
7	Suwa Community Center	1-16-14 Hibitsu-cho	2nd floor or higher
8	Inabaji Elementary School	3-20 Yasukuni-cho	2nd floor or higher
9	Inabaji Community Center	1-47 Inabaji-cho	2nd floor or higher
10	Inanishi Elementary School	88 Inanishi-cho	2nd floor or higher
11	Inanishi Community Center	2-16-5 Inabaji-cho	2nd floor or higher
12	Hosei Junior High School	7-1-2 Inabaji-cho	2nd floor or higher
13	Doho Gakuen	7-1 Inabaji-cho	2nd floor or higher
14	Nakamura Elementary School	1-72 Nakamura-cho	2nd floor or higher
15	Nakamura Community Center	7-84-2 Nakamura-cho	2nd floor or higher
16	Nakamura Sports Center	43-1 Aza machiya, Nakamura-cho	2nd floor or higher
17	Nagoya Keirin	68 Aza Iakabata, Nakamura-cho	2nd floor or higher
18	Toyotomi Elementary School	2-1 Morisue-cho	2nd floor or higher
19	Toyotomi Community Center	4-106 Morisue-cho	2nd floor or higher
20	Nakamura Lifelong Learning Center	3-1-3 Torii-tori	2nd floor or higher
21	Honjin Community Center	4-68 Matsubara-cho	2nd floor or higher
22	Honoka Elementary School	5-5 Matsubara-cho	2nd floor or higher
23	Noritake Community Center	8-17 Noritake 2-chome	2nd floor or higher
24	Oise Junior High School	5-4 Sakomae-cho	2nd floor or higher
25	Kamejima Fureai Center	5-30-2 Kamejima 1-chome	2nd floor or higher
26	Sasoshima Elementary School/ Junior High School	19-1 Meieki 4-chome	2nd floor or higher
27	Shimmei Community Center	17-3 Meieki 3-chome	2nd floor or higher
28	Seisa Nagoya Junior High School	6-38 Meieki Minami 4-chome	2nd floor or higher
29	Rokutan Community Center	4-7 Meieki Minami 4-chome	2nd floor or higher
30	Makino Elementary School	3-4 Takebashi-cho	2nd floor or higher
31	Makino Community Center	7-57 Taiko 3-chome	2nd floor or higher
32	Komono Elementary School	1-28 Gongen-tori	2nd floor or higher
33	Komono Community Center	3-11 Taiko 2-chome	2nd floor or higher
34	Hiyoshi Elementary School	1-1 Joshu-cho	2nd floor or higher
35	Kogane Junior High School	4-28 Gongen-tori	2nd floor or higher
36	Hiyoshi Community Center	4-40 Nishi Komono-cho	2nd floor or higher
37	Sennari Elementary School	1-120 Hinomiya-cho	2nd floor or higher
38	Sennari Community Center	1-12 Sunada-cho	2nd floor or higher
39	Yanagi Elementary School	2-56 Kasumori-cho	2nd floor or higher
40	Toyokuni Junior High School	1-8 Kifata-cho	2nd floor or higher
41	Prefectural Shoin Senior High School	2-2 Karasumori-cho	2nd floor or higher
42	Iwatsuka Elementary School	4-17-1 Iwatsuka-cho	2nd floor or higher
43	Mita Junior High School	2-10 Iwatsuka-cho	2nd floor or higher
44	Iwatsuka Community Center	3-192 Iwatsuka-cho	2nd floor or higher
45	Hashha Elementary School	199-2 Hashha 1-chome	2nd floor or higher

We used the basic urban planning maps used between 2015 and 2016 to create this map. Corrections were made accordingly.  
We used the urban planning maps of the following places with their consent: Kiyosu City, Ama City and Oharu Town. (Approval numbers - Kiyosu City: 3清須都98, Ama City: 3あ都58, Oharu Town: 3大都整256)