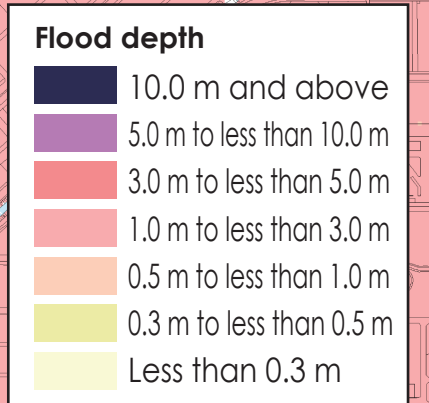
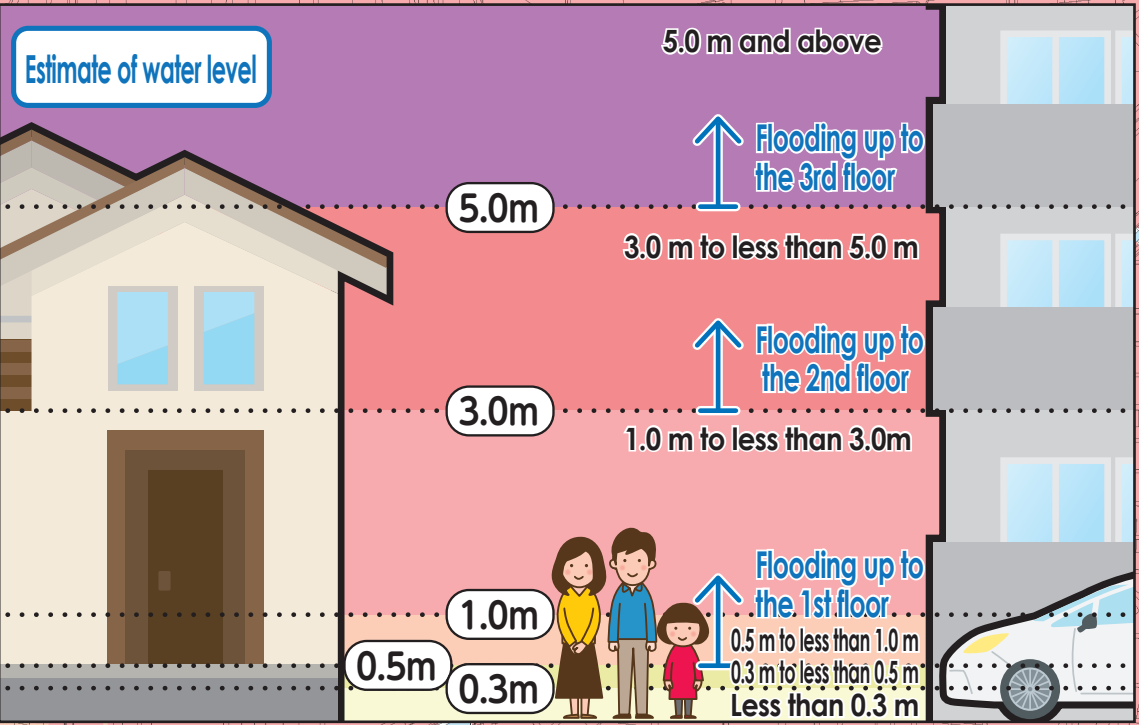


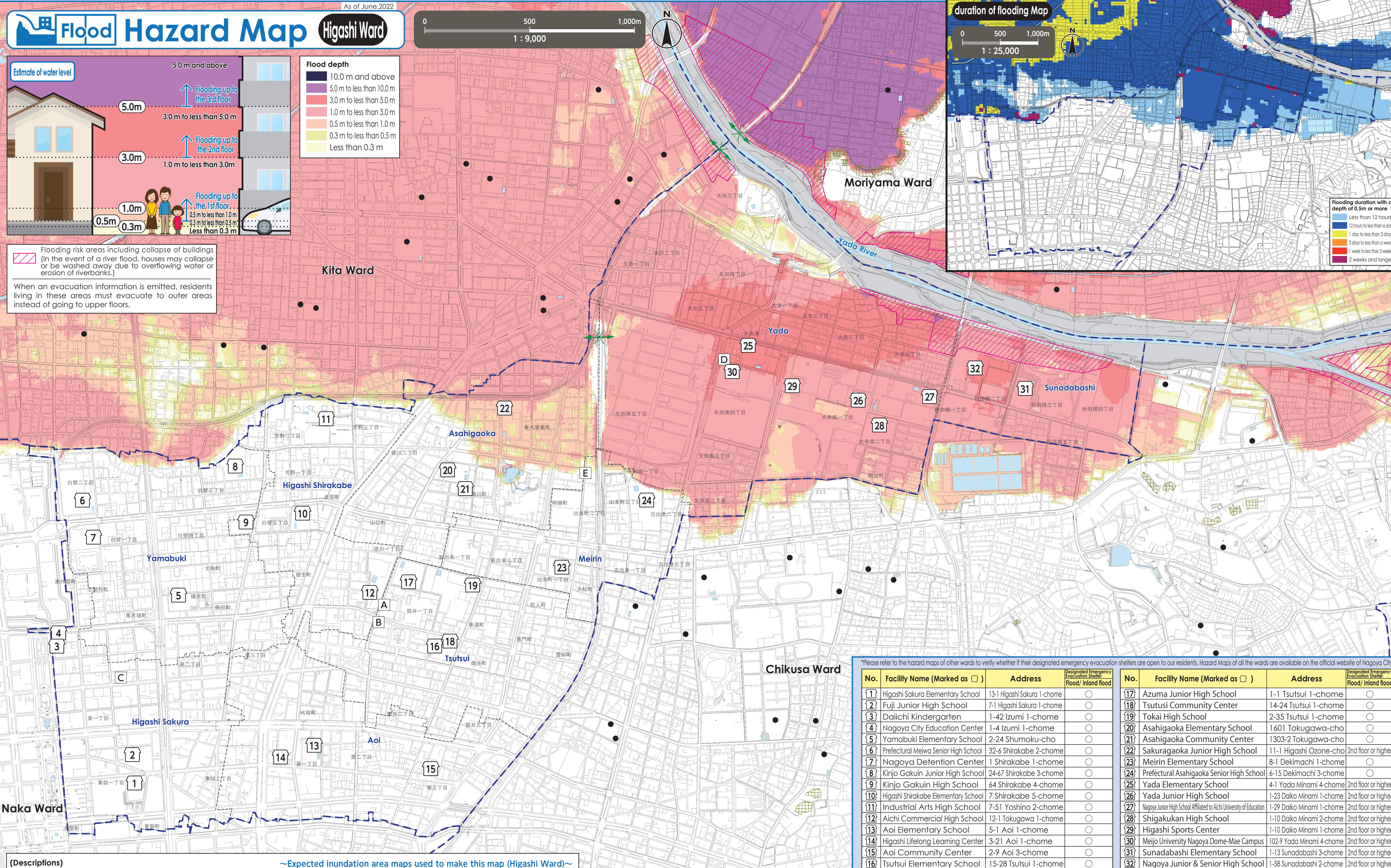
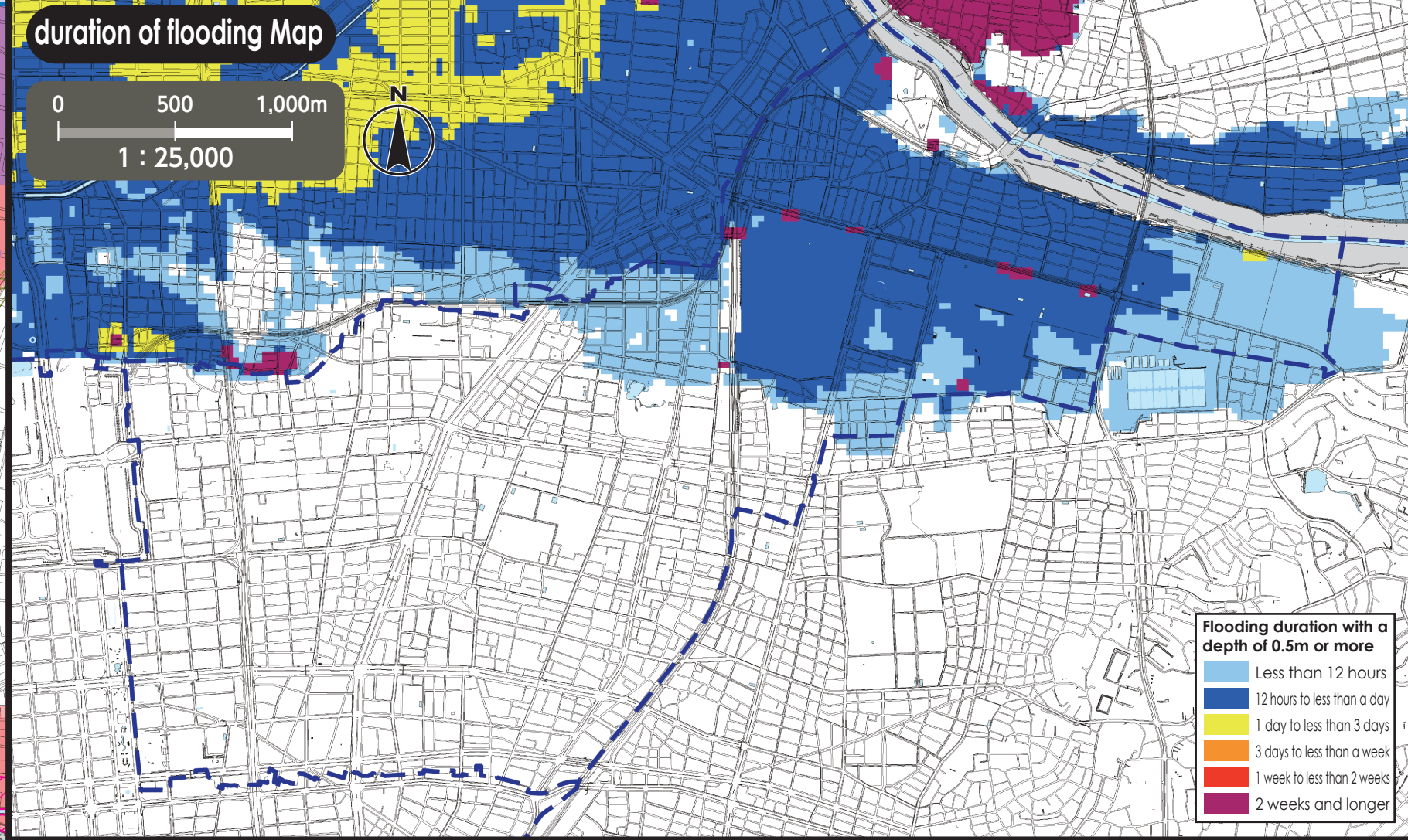
As of June, 2022

Flood Hazard Map Higashi Ward



Flooding risk areas including collapse of buildings (In the event of a river flood, houses may collapse or be washed away due to overflowing water or erosion of riverbanks.)

When an evacuation information is emitted, residents living in these areas must evacuate to outer areas instead of going to upper floors.



(Descriptions)

- The inundation area as well as the depth and duration of flooding were calculated with the maximum possible rainfall in mind.
- The inundation area as well as the depth and duration of flooding are only assumptions. Flooding may occur at a larger scale depending on a variety of factors.
- This map was created looking into all the areas indicated on the expected inundation area maps published by the Ministry of Land, Infrastructure, Transport and Tourism (MLIT) and Aichi Prefecture. The deeper flooding depth and the longer flooding duration were indicated in areas that overlapped.

~Expected inundation area maps used to make this map (Higashi Ward)~

Expected Inundation Area Map	Issued by	Released on	Rainfall condition
Shonai/Yada Rivers	MLIT	Mar-2020	24-hour precipitation amount 578mm
Yada River	Aichi Prefecture	Aug-2019	24-hour precipitation amount 735mm
Kanare River	Aichi Prefecture	Aug-2019	24-hour precipitation amount 836mm

Flooding Prediction Map	Issued by	Released on	Rainfall condition
Yada and Kanare Rivers basin	Aichi Prefecture	Sep-2019	24-hour precipitation amount 735mm (Yada River basin) 24-hour precipitation amount 836mm (Kanare River basin)

- Public Office (Marked as □)**
- A Higashi Ward Office
 - B Higashi Fire Station
 - C Higashi Fire Station Fujioka Branch
 - D Higashi Fire Station Yada Branch
 - E Higashi Public Works Office

- Legend**
- Designated Emergency Evacuation Shelter**
Places where you can take shelter from the danger of a flooding disaster in order to save your life.
 - Underpass**
Areas where heavy rain will cause roads to be flooded and closed to traffic.
 - Landslide Disaster (Special) Warning Zone**
Areas where landslides may occur.
 - Ward boundary**
 - School district boundary**
School districts are approximate. Please contact the respective ward office for further information.
 - Designated Emergency Evacuation Shelter outside the ward**

*Please refer to the hazard maps of other wards to verify whether if their designated emergency evacuation shelters are open to our residents. Hazard Maps of all the wards are available on the official website of Nagoya City.

No.	Facility Name (Marked as □)	Address	Designated Emergency Evacuation Shelter Flood/ Inland flood
1	Higashi Sakura Elementary School	13-1 Higashi Sakura 1-chome	○
2	Fuji Junior High School	7-1 Higashi Sakura 1-chome	○
3	Daiichi Kindergarten	1-42 Izumi 1-chome	○
4	Nagoya City Education Center	1-4 Izumi 1-chome	○
5	Yamabuki Elementary School	2-24 Shumoku-cho	○
6	Prefectural Meiwa Senior High School	32-6 Shirakabe 2-chome	○
7	Nagoya Detention Center	1 Shirakabe 1-chome	○
8	Kinjo Gakuin Junior High School	24-67 Shirakabe 3-chome	○
9	Kinjo Gakuin High School	64 Shirakabe 4-chome	○
10	Higashi Shirakabe Elementary School	7 Shirakabe 5-chome	○
11	Industrial Arts High School	7-51 Yoshino 2-chome	○
12	Aichi Commercial High School	12-1 Tokugawa 1-chome	○
13	Aoi Elementary School	5-1 Aoi 1-chome	○
14	Higashi Lifelong Learning Center	3-21 Aoi 1-chome	○
15	Aoi Community Center	2-9 Aoi 3-chome	○
16	Tsutsui Elementary School	15-28 Tsutsui 1-chome	○

No.	Facility Name (Marked as □)	Address	Designated Emergency Evacuation Shelter Flood/ Inland flood
17	Azuma Junior High School	1-1 Tsutsui 1-chome	○
18	Tsutsui Community Center	14-24 Tsutsui 1-chome	○
19	Tokai High School	2-35 Tsutsui 1-chome	○
20	Asahigaoka Elementary School	1601 Tokugawa-cho	○
21	Asahigaoka Community Center	1303-2 Tokugawa-cho	○
22	Sakuragaoka Junior High School	11-1 Higashi Ozone-cho	2nd floor or higher
23	Meirin Elementary School	8-1 Dekimachi 1-chome	○
24	Prefectural Asahigaoka Senior High School	6-15 Dekimachi 3-chome	○
25	Yada Elementary School	4-1 Yada Minami 4-chome	2nd floor or higher
26	Yada Junior High School	1-23 Daiko Minami 1-chome	2nd floor or higher
27	Nagoya Junior High School Affiliated to Aichi University of Education	1-29 Daiko Minami 1-chome	2nd floor or higher
28	Shigakukan High School	1-10 Daiko Minami 2-chome	2nd floor or higher
29	Higashi Sports Center	1-10 Daiko Minami 1-chome	2nd floor or higher
30	Meijo University Nagoya Dome-Mae Campus	102-9 Yada Minami 4-chome	2nd floor or higher
31	Sunadabashi Elementary School	1-13 Sunadabashi 3-chome	2nd floor or higher
32	Nagoya Junior & Senior High School	1-58 Sunadabashi 2-chome	2nd floor or higher

Evacuation to Designated Emergency Evacuation Shelter

○ Please evacuate to a designated emergency evacuation shelter according to the type of disaster if you are in danger (especially when evacuation information (evacuation instruction, etc.) is released) and you cannot stay at home to save your life.

○ Designated emergency evacuation shelters within flooding risk areas including collapse of buildings have been confirmed to be structurally safe.

○ Please contact the ward office in advance to confirm the place you are going is safe if you intend to evacuate on your own command.

Nagoya City Disaster Countermeasures Office /Higashi Ward Headquarters (Higashi Ward Office)
Tel: 935-2271 (Main) 934-1111~6 (Direct) Fax: 935-5866