

# An Introduction to Civil Protection

## —A Message from the City of Nagoya—

In 2007, the City of Nagoya drew up the Nagoya City Civil Protection Plan based on the Civil Protection Law.

Civil protection refers to the national and local governments and other concerned organizations working together to rescue and provide guidance to evacuees, and to protect the life, person, and property of residents when our country is under threat of a military or large-scale terrorist attack or has suffered one.

To give you a clear idea of what to do in such a case, here is an introduction to the contents of the plan.

## In order to help residents evacuate

An important part of civil protection is conveying information to residents and helping them find shelter\* in a safer location.

For this purpose, the City of Nagoya is employing the following measures in order to help residents evacuate when it is under threat of a military or large-scale terrorist attack or has suffered one.

\*Please be aware that unlike evacuating to the nearest elementary or junior high school as in disaster prevention, evacuation may sometimes mean going outside the city, or only as far as inside the nearest building.

### Evacuation Flow Chart

When Nagoya is under threat of a military or large-scale terrorist attack or has suffered one



Step (1) Issuing alerts and evacuation information



Step (2) Evacuation

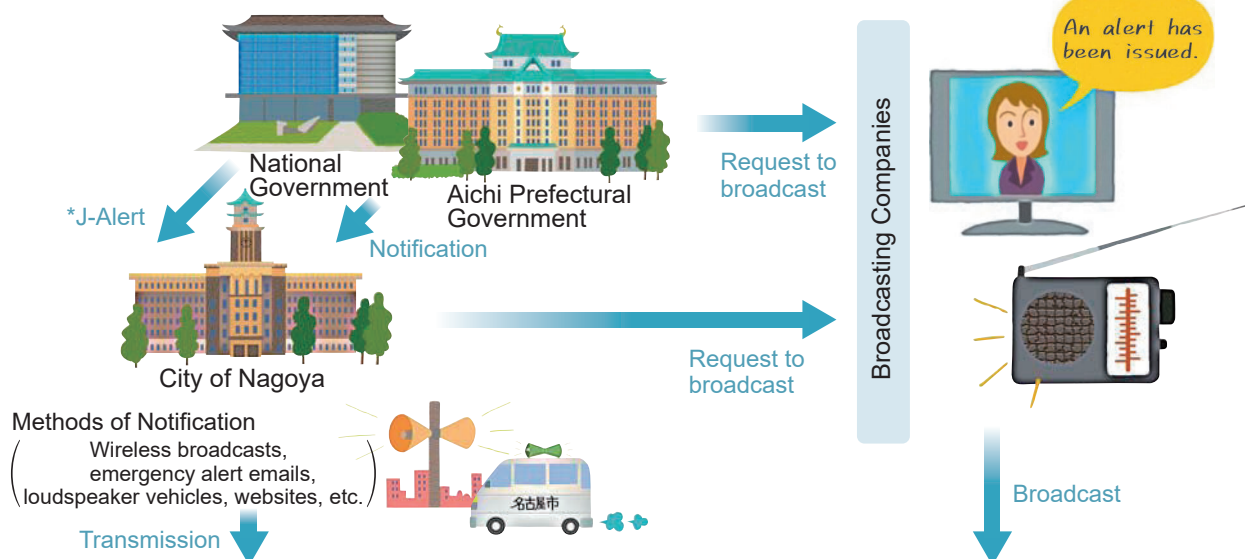
### Step (1) Alerts and evacuation information will be issued.

When the city is under threat of a military or large-scale terrorist attack or has suffered one, it will relay alerts and evacuation information from the national and prefectural governments.

Alerts: Announcements issued when an attack is anticipated or has taken place.

Evacuation information: Information about which areas need to be evacuated and where to take shelter.

### Channel of Communication to Residents



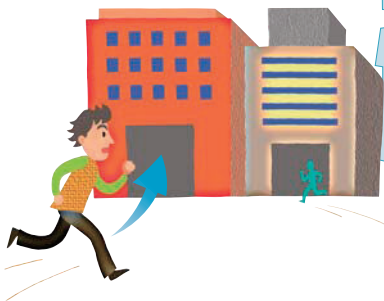
\*J-Alert: A system that uses satellites to transmit emergency information on ballistic missiles, tsunamis, earthquakes, etc. from the Cabinet Secretariat and Meteorological Agency, via the Fire and Disaster Management Agency. It automatically activates wireless communications, emergency alert emails, etc., and instantly sends emergency information from the national government to residents.

## Step (2) When seeking shelter!

Evacuation is divided into the following three categories, so please evacuate according to the correct instructions.

### Case 1 Sheltering Indoors (if danger is imminent)

- If you are indoors, close all doors and windows and do not go outside until instructed to do so.
- If you are outside, seek shelter in the nearest sturdy building, underground shopping area, etc.



### Case 3 Evacuating to refuge facilities outside the city

Use public transport (trains, etc.) to go to a refuge facility designated by the city. To get to the train station, walk or take the city buses, subways, etc. that are running as normal. Please do not drive.



### Case 2 Evacuating to refuge facilities within the city

Walk or go by bicycle to a refuge facility designated by the city. Please do not drive.



**Warning: Do not use a car!**  
Cars will cause traffic jams and prevent evacuation!

## As an evacuee at the refuge facility

The local organization in charge of the refuge facility will provide relief to evacuees in the form of food, medical treatment, etc. In addition, the national and local governments will work with other relevant organizations to collect information on the well-being of evacuees and provide it to their families.



## A request from the City of Nagoya

### Please cooperate

We ask you to cooperate with disaster prevention in the spirit of "self-help," mutual aid," and "public assistance" to protect the life, person, and property of all residents from disasters. We also think it is important to cooperate in this spirit regarding military or large-scale terrorist attacks.

Being prepared for disasters is as important as preventing them. Therefore, it is also important to regularly discuss with your family preparing emergency supplies, how to contact each other, and other ways to be ready.



**Inquiries About the Civil Protection Plan**

Disaster Prevention and Risk Management Bureau,  
Risk Management Planning Office

TEL: 052-972-3523 FAX: 052-962-4030

E-mail: [a3523@bosaikikikanri.city.nagoya.lg.jp](mailto:a3523@bosaikikikanri.city.nagoya.lg.jp)

**About civil protection measures**

Disaster Prevention and Risk Management Bureau,  
Risk Countermeasures Office

TEL: 052-972-3522 FAX: 052-962-4030

E-mail: [a3522@bosaikikikanri.city.nagoya.lg.jp](mailto:a3522@bosaikikikanri.city.nagoya.lg.jp)



This mark is a special international sign used to identify people, vehicles, etc. conducting civil protection measures.