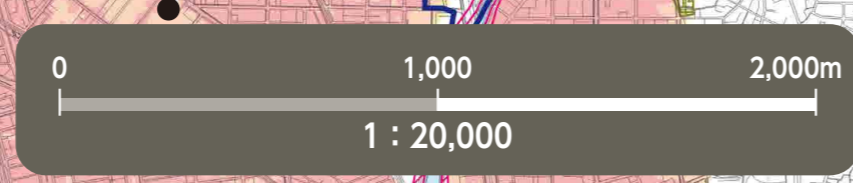
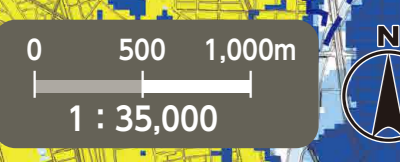


# Flood Hazard Map Midori Ward

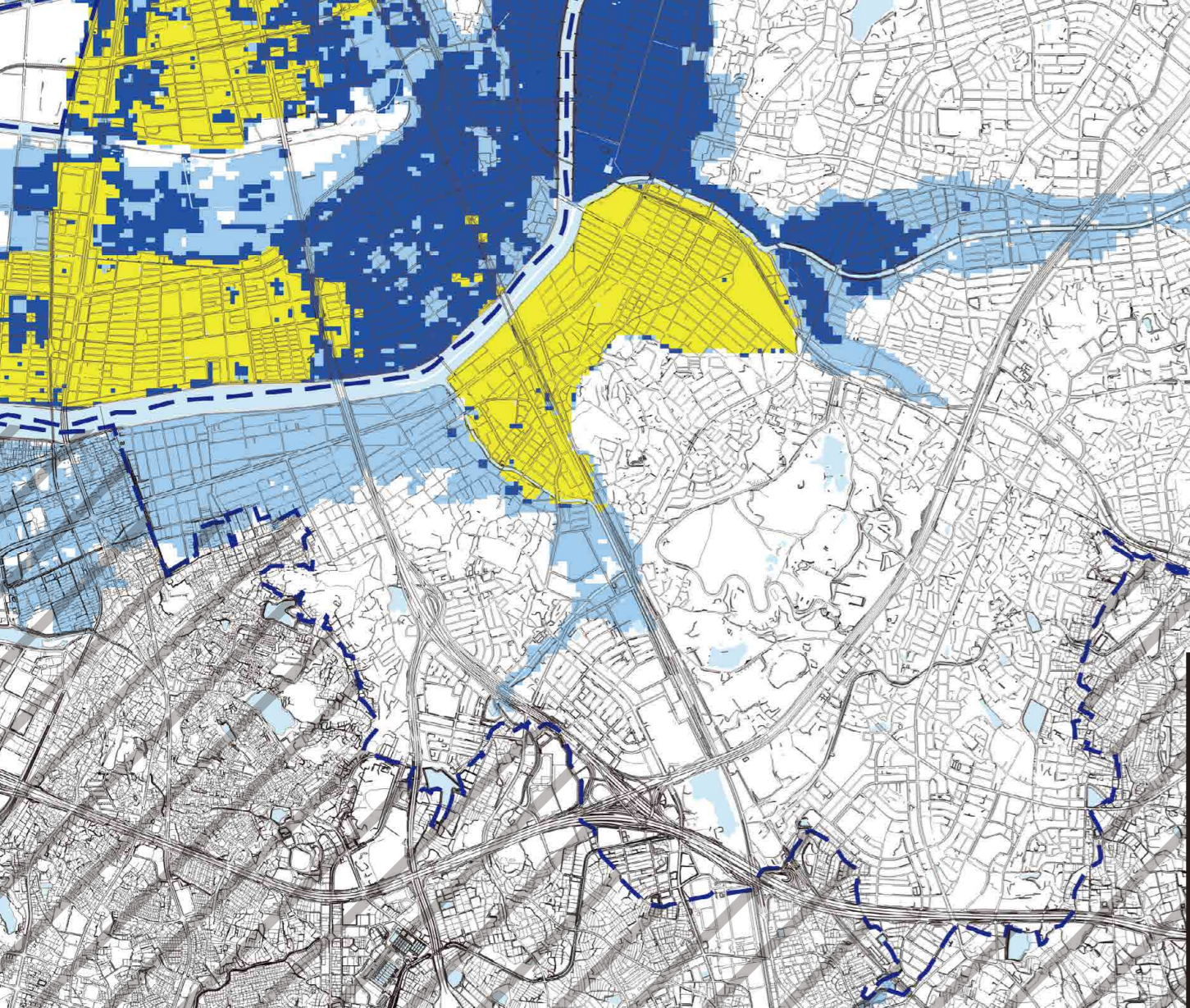
As of August, 2025



## duration of flooding Map



- Less than 12 hours
- 12 hours to less than a day
- 1 day to less than 3 days
- 3 days to less than a week
- 1 week to less than 2 weeks
- 2 weeks and longer



\*Please refer to the hazard maps of other wards to verify whether if their designated emergency evacuation shelters are open to our residents. Hazard Maps of all the wards are available on the official website of Nagoya City.

No.	Facility Name (Marked as □)	Address	Designated Emergency Evacuation Shelter
1	Narumi Elementary School	98 Aza yagiri, Narumi-cho	○
2	Narumi Community Center	22-1 Aza shiro, Narumi-cho	○
3	Midori Lifelong Learning Center	54 Aza hommachi, Narumi-cho	○
4	Sakaemachi Meeting House	60-1 Aza kamishioda, Narumi-cho	2 <sup>nd</sup> floor or higher
5	Aibara Elementary School (south school building only)	301 Wakata 1-chome	2 <sup>nd</sup> floor or higher (south school building)
6	Narumi Junior High School	96 Rokuden 2-chome	2 <sup>nd</sup> floor or higher
7	Aibara Community Center	1102 Wakata 2-chome	2 <sup>nd</sup> floor or higher
8	Midori Sports Center	2901 Aibarago 1-chome	2 <sup>nd</sup> floor or higher
9	Asahide Elementary School	101 Asahide 1-chome	○
10	Midori Senior High School	1104 Asahide 1-chome	○
11	Asahide Community Center	54 Shikayama 1-chome	○
12	Takinomizu Elementary School	1901 Takinomizu 1-chome	○
13	Takinomizu Community Center	1501 Takinomizu 1-chome	○
14	Katahira Elementary School	18 Aza katahira, Narumi-cho	○
15	Chidorigaoka Junior High School	108 Aza yamanokami, Narumi-cho	○
16	Narumi Shrine Office	85 Aza otokoyama, Narumi-cho	○
17	Urasato Elementary School	77 Urasato 1-chome	3 <sup>rd</sup> floor or higher
18	Midori Elementary School	24 Aza zennowa, Narumi-cho	2 <sup>nd</sup> floor or higher
19	Midori Community Center	106 Aza zennowa, Narumi-cho	2 <sup>nd</sup> floor or higher
20	Hirako Elementary School	236 Hirakogaoka	○
21	Sakyoyama Junior High School	1407 Sakyoyama	○
22	Hirako Community Center	36 Sone 2-chome	○
23	Prefectural Narumi High School	801 Sakyoyama	○
24	Narumi-tobu Elementary School	901 Hirate Kita 2-chome	○
25	Narumi-tobu Community Center	203 Hirate Minami 1-chome	○
26	Kosaka Elementary School	1001-2 Kosaka 1-chome	○
27	Kosaka Community Center	2006 Kosaka 2-chome	○
28	Takinomizu Junior High School	602 Takinomizu 3-chome	○
29	Konomiya Takinomizu Store	301 Takinomizu 3-chome	○
30	Joan Elementary School	2101 Norikura 1-chome	○
31	Joan Community Center	12 Norikura 3-chome	○
32	Oshimizu Elementary School	901 Oshimizu Nishi	○
33	Kamakuradai Junior High School	402 Kamakuradai 2-chome	○
34	Oshimizu Community Center	801 Sunada 2-chome	○
35	Tokushige Elementary School	801 Tokushige 2-chome	○
36	Ogata Junior High School (except the North school building)	1201 Tokushige 1-chome	2 <sup>nd</sup> floor or higher (except the North school building)
37	Tokushige Community Center	401 Tokushige 2-chome	○
38	Tokushige District Hall	401 Mototokushige 1-chome	○

No.	Facility Name (Marked as □)	Address	Designated Emergency Evacuation Shelter
39	Kumanomae Elementary School	901 Kamegahara 1-chome	○
40	Kumanomae Community Center	608-2 Fujizuka 1-chome	○
41	Kaminokura Elementary School	198 Kaminokura 2-chome	2 <sup>nd</sup> floor or higher
42	Kaminokura Junior High School	1201 Shirotsuchi	○
43	Kaminokura Community Center	199 Kaminokura 4-chome	○
44	Tenrikyo Aichi Grand Church	2401 Higashi Kaminokura 2-chome	○
45	Higashigaoka Elementary School	9 Aza arimatsuura, Narumi-cho	○
46	Tonyo Junior High School (Marital Arts Hall only)	1353 Tonyou	Evacuate to the Marital Arts Hall.
47	Higashigaoka Community Center	200 Aza arimatsuura, Narumi-cho	○
48	Taishi Elementary School	242 Taishi 2-chome	○
49	Taishi Community Center	1604 Ubakoyama 3-chome	○
50	Naruko Elementary School	2-69 Naruko-cho	○
51	Narukodai Junior High School	3-40 Naruko-cho	○
52	Naruko Community Center	2-70 Naruko-cho	○
53	Naganedai Elementary School	161-1 Konarumi 2-chome	○
54	Naganedai Community Center	98-6 Aza Ikegami, Narumi-cho	○
55	Togasa Elementary School	60 Aikawa 3-chome	○
56	Togasa Community Center	101 Aikawa 3-chome	○
57	Arimatsu Elementary School (Except for school buildings)	2803 Arimatsu	Evacuate to the gymnasium.
58	Arimatsu Junior High School	39-83 Aza balore, Oaza Okehazama, Arimatsu-cho	○
59	Arimatsu Community Center	3052 Arimatsu	○
60	Okehazama Elementary School	1908 Okehazama Makiyama	○
61	Nanryo Elementary School	1348 Okehazama Morimae	○
62	Odaka Elementary School	2601 Odakadai 3-chome	○
63	Odaka Regional Community Center	46-1 Aza kadota, Odaka-cho	2 <sup>nd</sup> floor or higher
64	Odaka School District Meeting House	2301 Odakadai 3-chome	○
65	Heisei Kanko Co., Ltd. KE2 Odaka Branch Multi-story parking garage	46-2 Aza Tarasinden, Odaka-cho	2 <sup>nd</sup> floor or higher
66	Odaka Minami Elementary School	1004 Minami Odaka 1-chome	2 <sup>nd</sup> floor or higher
67	Odaka Junior High School (Except for south school building)	107 Morinosato 1-chome	2 <sup>nd</sup> floor or higher
68	Odaka Minami Community Center	94 Morinosato 1-chome	2 <sup>nd</sup> floor or higher
69	Odaka Kita Elementary School	1 Aza machiyagawa, Odaka-cho	2 <sup>nd</sup> floor or higher
70	Nagoya City Youth Accommodation Center	4-6 Aza mamushike, Odaka-cho	○
71	Kuroishi Elementary School	1533 Kurosawadai 2-chome	○
72	Kuroishi Community Center	11 Aza kamisawa, Narumi-cho	○
73	Momoyama Elementary School	327 Momoyama 4-chome	○
74	Kamisawa Junior High School	1201 Kamisawa 2-chome	○
75	Momoyama Community Center	96 Momoyama 2-chome	○

## Evacuation to Designated Emergency Evacuation Shelter

- Please evacuate to a designated emergency evacuation shelter according to the type of disaster if you are in danger (especially when evacuation information (evacuation instruction, etc.) is released) and you cannot stay at home to save your life.
- Designated emergency evacuation shelters within flooding risk areas including collapse of buildings have been confirmed to be structurally safe.
- Please contact the ward office in advance to confirm the place you are going is safe if you intend to evacuate on your own command.

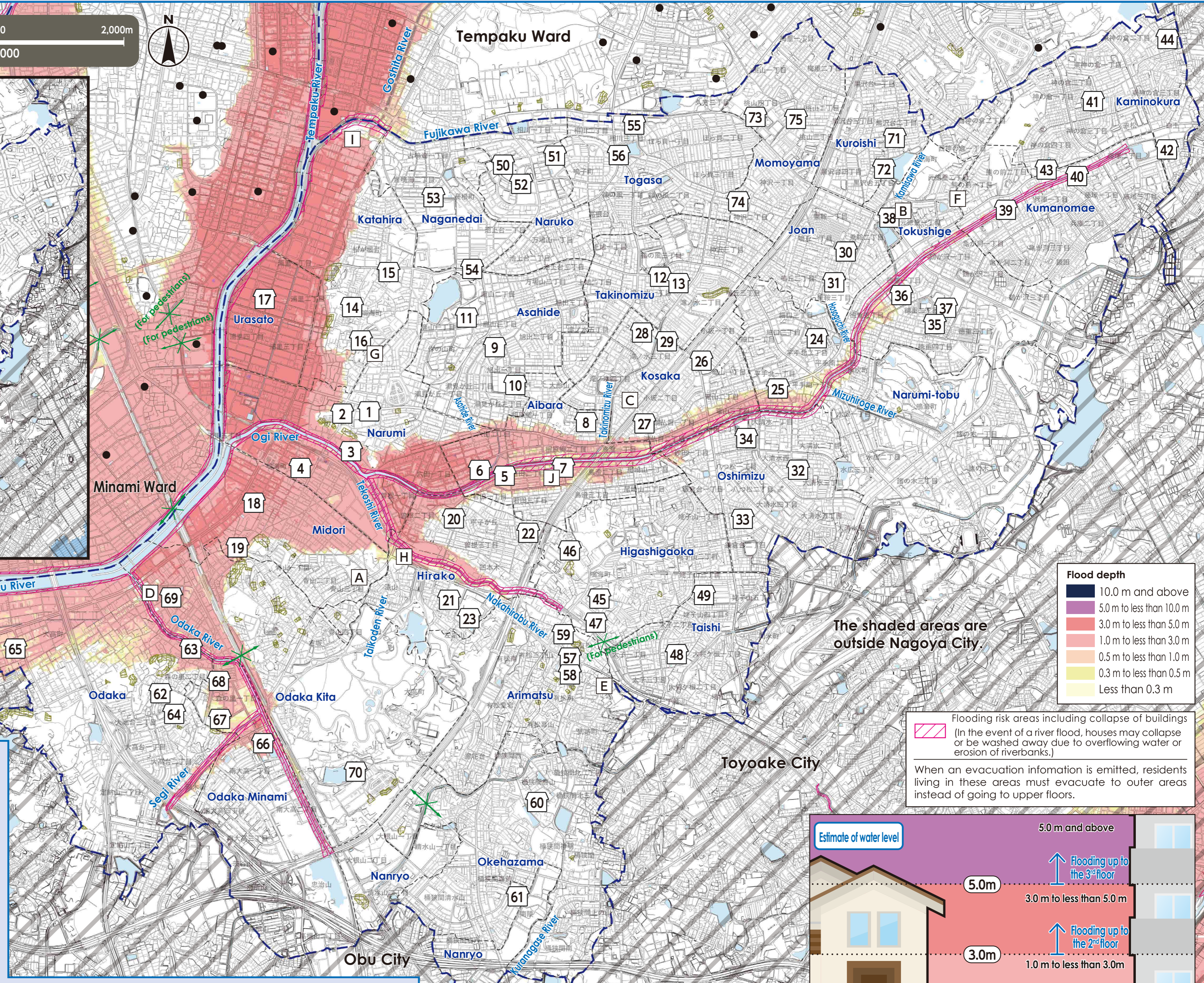
Nagoya City Disaster Countermeasures Office / MidoriWard Headquarters (Midori Ward Office)  
Tel: 621-2111 (Main) 625-3903~6 (Direct) Fax: 623-8191

## Public Office (Marked as □)

- |  |   |   |
|--|---|---|
| A) Midori Ward Office                  | E) Midori Fire Station Arimatsu Branch  | I) Waterworks & Sewerage Bureau South Office  |
| B) Midori Ward Office Tokushige Branch | F) Midori Fire Station Tokushige Branch | J) Waterworks & Sewerage Bureau South Water Distribution & Sewer Maintenance Center |
| C) Midori Fire Station                 | G) Midori Fire Station Narumi Branch    |   |
| D) Midori Fire Station Odaka Branch    | H) Midori Public Works Office           |   |

## Legend

- 0 Designated Emergency Evacuation Shelter
- Underpass
- Landslide Disaster (Special) Warning Zone
- Ward boundary
- School district boundary
- Designated Emergency Evacuation Shelter outside the ward

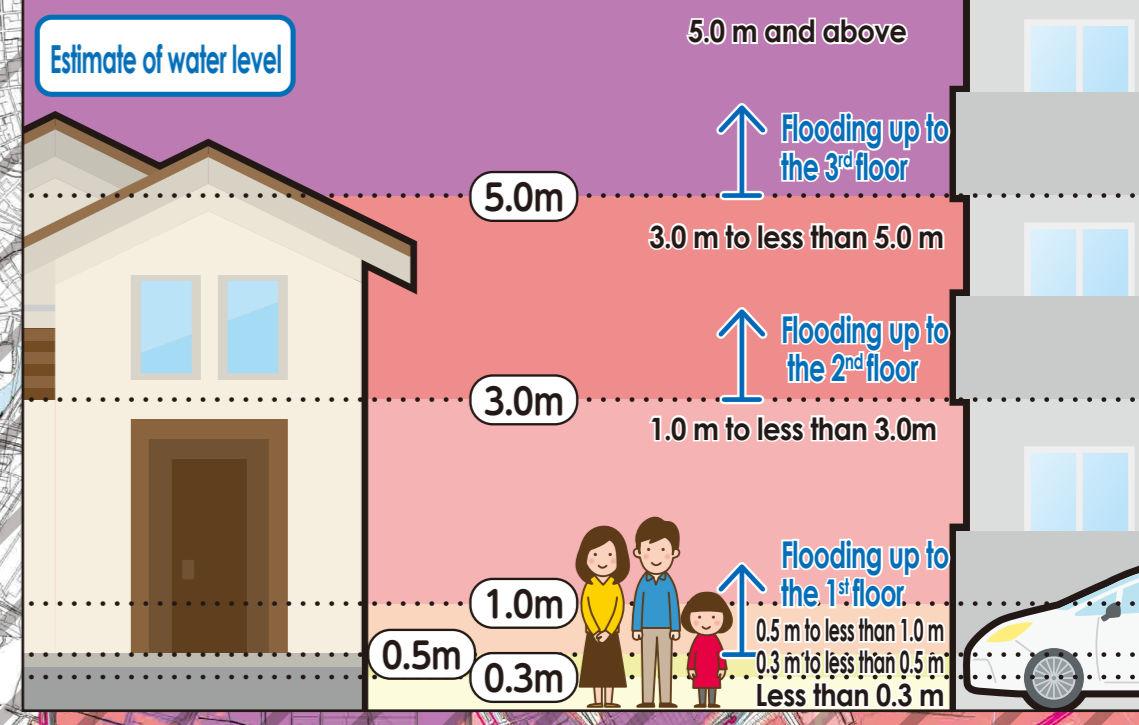


- ### Flood depth
- 10.0 m and above
  - 5.0 m to less than 10.0 m
  - 3.0 m to less than 5.0 m
  - 1.0 m to less than 3.0 m
  - 0.5 m to less than 1.0 m
  - 0.3 m to less than 0.5 m
  - Less than 0.3 m

The shaded areas are outside Nagoya City.

Flooding risk areas including collapse of buildings (In the event of a river flood, houses may collapse or be washed away due to overflowing water or erosion of riverbanks.)

When an evacuation information is emitted, residents living in these areas must evacuate to outer areas instead of going to upper floors.



- ### (Descriptions)
- The inundation area as well as the depth and duration of flooding were calculated with the maximum possible rainfall in mind.
  - The inundation area as well as the depth and duration of flooding are only assumptions. Flooding may occur at a larger scale depending on a variety of factors.
  - This map was created looking into all the areas indicated on the expected inundation area maps published by the Ministry of Land, Infrastructure, Transport and Tourism (MLIT) and Aichi Prefecture. The deeper flooding depth and the longer flooding duration were indicated in areas that overlapped.

### ~Expected inundation area maps used to make this map (Midori ward)~

Expected Inundation Area Map	Issued by	Released on	Rainfall condition
Sakai and Aizuma Rivers basin	Aichi Prefecture	Nov-2024	24-hour precipitation amount 760mm (Sakai River basin)
			24-hour precipitation amount 765mm (Aizuma River basin)
Tempaku River basin	Aichi Prefecture	Mar-2025	24-hour precipitation amount 774mm (Tempaku River basin)
			24-hour precipitation amount 836mm (Ogi River basin)

We used the basic urban planning maps used between 2020 and 2021 to create this map. Corrections were made accordingly. We used the urban planning maps of the following places with their consent: Tokai City, Obu City, Toyooko City, Togo Town and Nissin City. (Approval numbers - Tokai City: 都54, Obu City: 7大都591, Toyooko City: 豊都918, Togo Town: 東計発50, and Nissin City: 7日都445) Landslide Disaster Hazard Map, Aichi Prefecture, Creative Commons License Attribution 2.1 Japan (<http://creativecommons.org/licenses/by/2.1/jp/>)