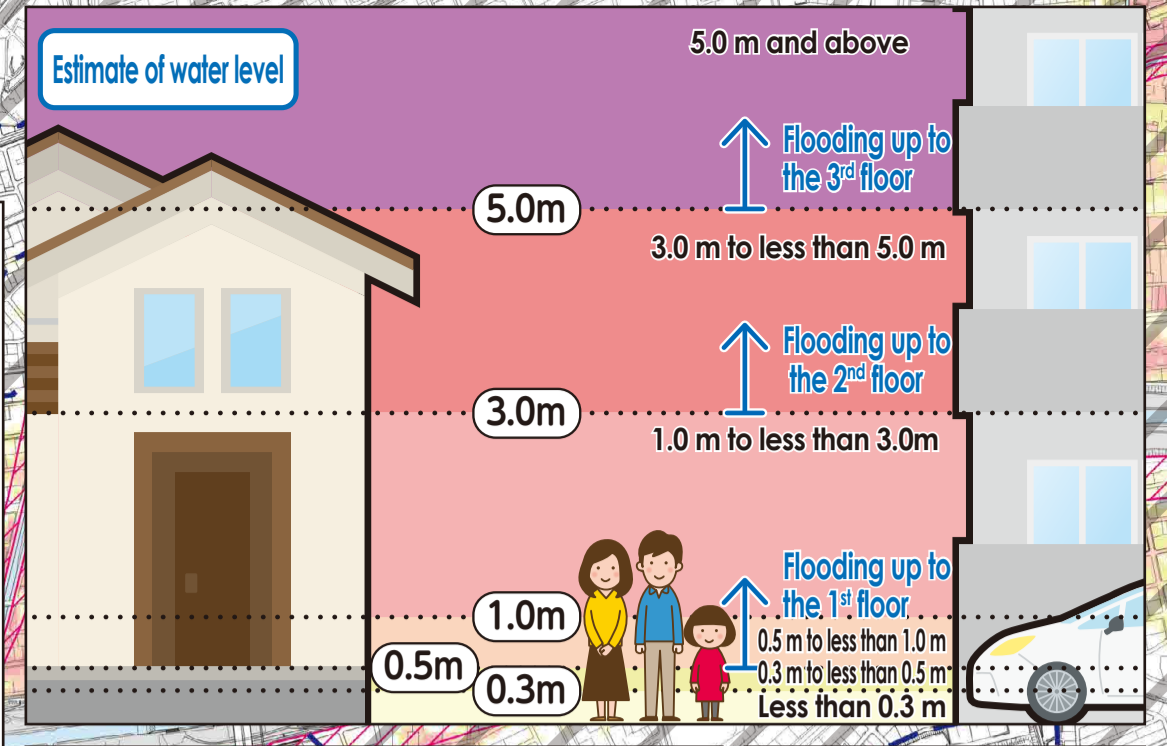
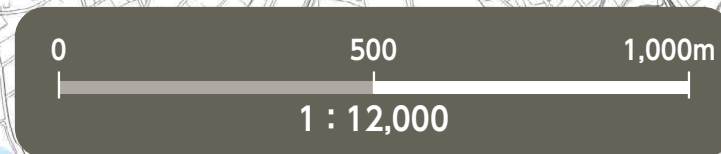


Flood Hazard Map Meito Ward



*Please refer to the hazard maps of other wards to verify whether if their designated emergency evacuation shelters are open to our residents. Hazard Maps of all the wards are available on the official website of Nagoya City.

No.	Facility Name (Marked as □)	Address	Designated Emergency Evacuation Shelter (Flood/Inland flood/Landslide)
1	Nishiyama Elementary School	2-35 Nishiyama-hondori	○
2	Kamioka Junior High School	1-18 Kamioka-cho	○
3	Nishiyama Community Center	2-34 Nishiyama-hondori	○
4	Waterworks & Sewerage Bureau / Nishiyama Water Treatment Center	404 Sankō-cho	2nd floor or higher
5	Meito Elementary School	134 Kamenoi 3-chome	○
6	Meito Community Center	128 Issha 2-chome	○
7	Nishiyamada Kindergarten	41 Kamenoi 2-chome	○
8	Takabari Elementary School	1103 Takabari 2-chome	○
9	Takabari Community Center	1501 Takabari 2-chome	○
10	Itaka Elementary School	32 Choda-cho	○
11	Itaka Junior High School	33 Choda-cho	○
12	Itaka Community Center	203-2 Yashiroguchi 2-chome	○
13	Fujigaoka Elementary School	54 Fujigaoka	○
14	Fujimori Junior High School	66 Koike-cho	○
15	Fujigaoka Community Center	18 Akegaoka	○
16	Kanare Elementary School	1201 Kanare 2-chome	2nd floor or higher
17	Kanare Junior High School	1301 Inokishihara 2-chome	2nd floor or higher
18	Kanare Community Center	902 Yamanote 3-chome	○
19	Kanare Nursery School	604 Shingetsu-cho	2nd floor or higher
20	Inokoishi Elementary School	1201 Inokoishi 2-chome	○
21	Inokoishi Community Center	53 Aza umemorizaka, Oaza inokoishi, Idaka-cho	○
22	Inokoishi Daini Nursery School	920 Bunkuyodai 1-chome	○*1
23	Umemorizaka Elementary School	201 Umemorizaka 4-chome	○
24	Umemorizaka Community Center	101 Umemorizaka 4-chome	○
25	Yomogi Elementary School	501 Yomogidai 1-chome	○
26	Yomogi Community Center	301 Tsutsuji-gaoka	○
27	Inokoishi Daiichi Nursery School	201 Tsutsuji-gaoka	○
28	Inokoishi Junior High School	25 Chiyogaoka, Chikusa Ward	○
29	Hongo Elementary School	237 Hongo 1-chome	○
30	Hongo Community Center	238 Hongo 1-chome	○
31	Kifune Elementary School	2301 Kifune 3-chome	○
32	Takabari Junior High School	801 Sekobo 3-chome	2nd floor or higher
33	Kifune Community Center	1304-2 Sekobo 2-chome	○
34	Gokuraku Elementary School	901 Takabari-dai 3-chome	○
35	Meito Senior High School	351 Obari 1-chome	○
36	Gokuraku Community Center	801-2 Takabari-dai 3-chome	○
37	Meito Sports Center	307-12 Aza sekobo, Oaza takabari, Idaka-cho	○
38	Kamiyashiro Elementary School	1002 Kamiyashiro 5-chome	○
39	Kamiyashiro Junior High School	301 Yashirogaoka 4-chome	○
40	Kamiyashiro Community Center	1501 Kamiyashiro 5-chome	2nd floor or higher
41	Meito Lifelong Learning Center	802 Yashirogaoka 3-chome	○
42	Yutakagaoka Elementary School	1501 Yutakagaoka	○
43	Yutakagaoka Community Center	2108 Yutakagaoka	○
44	Hikiyama Elementary School	1105 Hikiyama 1-chome	2nd floor or higher
45	Hikiyama Community Center	617 Hikiyama 3-chome	○
46	Heiwagaoka Elementary School	1 Heiwagaoka 1-chome	○
47	Toho High School	11 Heiwagaoka 3-chome	○
48	Heiwagaoka Community Center	29 Heiwagaoka 5-chome	○
49	Maeyama Elementary School	1501 Makinohara 2-chome	○
50	Makinohara Junior High School	2504 Umemorizaka 1-chome	○
51	Umemorizaka Kindergarten	210 Umemorizaka 3-chome	○
52	Maeyama Community Center	36-2 Aza umemorizaka, Oaza takabari, Idaka-cho	○
53	Kita Issha Elementary School	101 Kamisuge 1-chome	○
54	Chigusa High School	206 Yashirodai 2-chome	○
55	Kita Issha Community Center	190-3 Yashirodai 2-chome	○
56	Makinohara Elementary School	401 Makinohara 3-chome	2nd floor or higher
57	Makinohara Community Center	101-2 Takabarihara 1-chome	2nd floor or higher

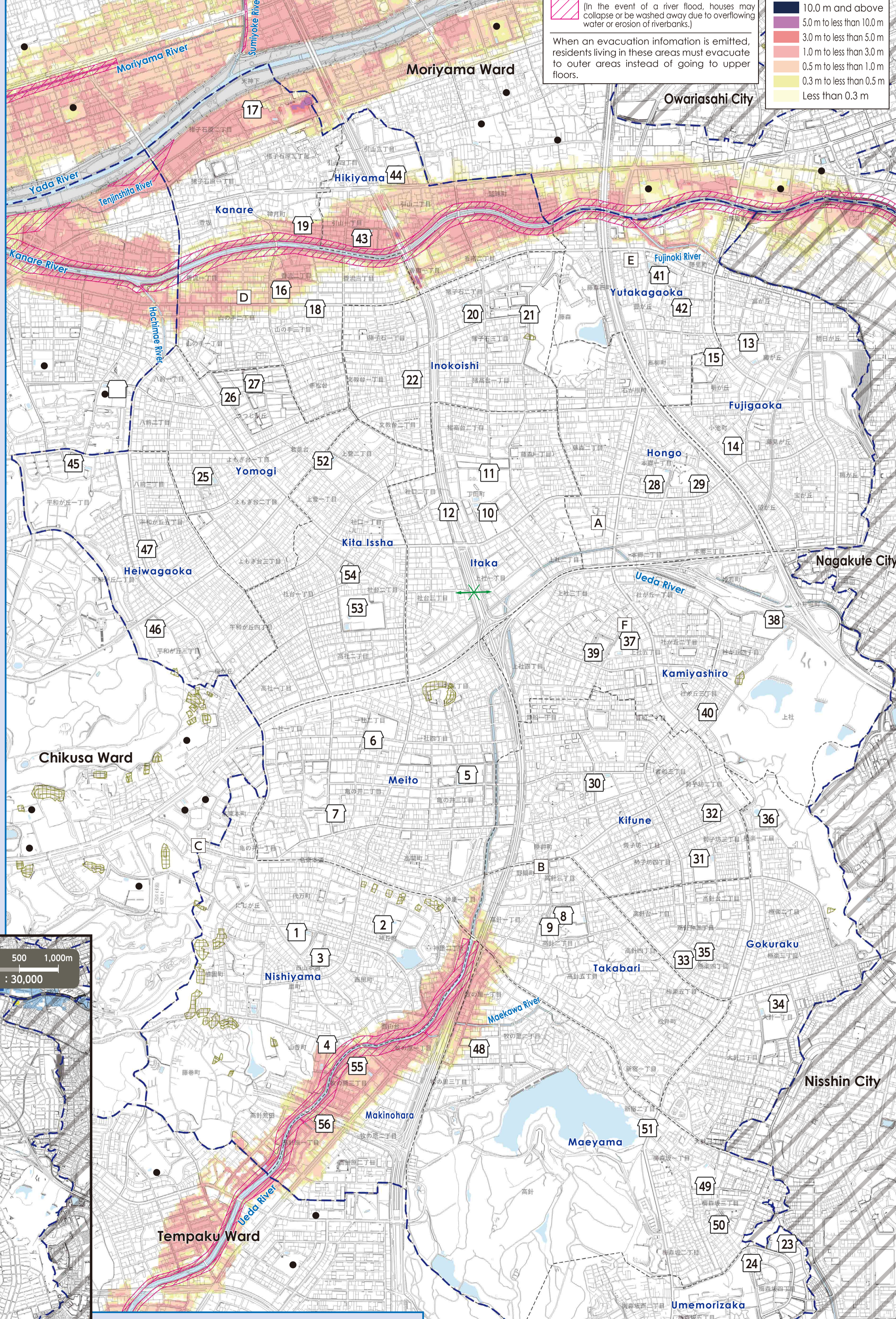
*1 No access to the building due to renovation work from December 16, 2024 to June 30, 2026.

(Descriptions)

- The inundation area as well as the depth and duration of flooding were calculated with the maximum possible rainfall in mind.
- The inundation area as well as the depth and duration of flooding are only assumptions. Flooding may occur at a larger scale depending on a variety of factors.
- This map was created looking into all the areas indicated on the expected inundation area maps published by the Ministry of Land, Infrastructure, Transport and Tourism (MLIT) and Aichi Prefecture. The deeper flooding depth and the longer flooding duration were indicated in areas that overlapped.

~Expected inundation area maps used to make this map (Meito ward)~

Expected Inundation Area Map	Issued by	Released on	Rainfall condition
Yada and Kanare Rivers basin	Aichi Prefecture	Mar-2025	24-hour precipitation amount 735mm (Yada River basin) 24-hour precipitation amount 836mm (Kanare River basin)
Tempaku River basin	Aichi Prefecture	Mar-2025	24-hour precipitation amount 774mm (Tempaku River basin) 24-hour precipitation amount 836mm (Ogi River basin)



Flooding risk areas including collapse of buildings (In the event of a river flood, houses may collapse or be washed away due to overflowing water or erosion of riverbanks.)

When an evacuation information is emitted, residents living in these areas must evacuate to outer areas instead of going to upper floors.

Flood depth

- 10.0 m and above
- 5.0 m to less than 10.0 m
- 3.0 m to less than 5.0 m
- 1.0 m to less than 3.0 m
- 0.5 m to less than 1.0 m
- 0.3 m to less than 0.5 m
- Less than 0.3 m

Evacuation to Designated Emergency Evacuation Shelter

○ Please evacuate to a designated emergency evacuation shelter according to the type of disaster if you are in danger (especially when evacuation information (evacuation instruction, etc.) is released) and you cannot stay at home to save your life.

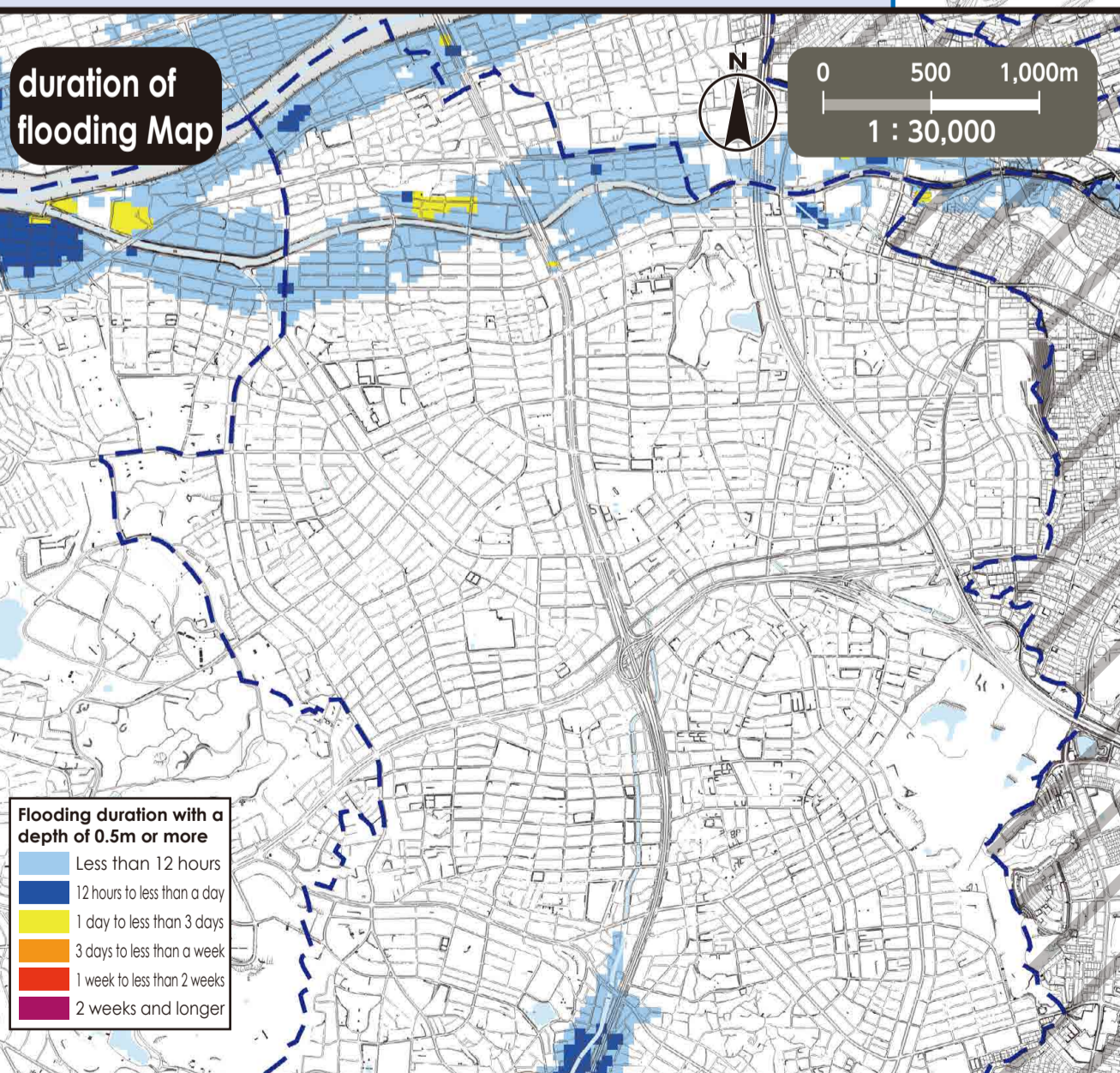
○ Designated emergency evacuation shelters within flooding risk areas including collapse of buildings have been confirmed to be structurally safe.

○ Please contact the ward office in advance to confirm the place you are going is safe if you intend to evacuate on your own command.

Nagoya City Disaster Countermeasures Office / Meito Ward Headquarters (Meito Ward Office)
Tel: 773-1111 (Main) 778-3013 (Direct) Fax: 773-7864

Public Office (Marked as □)

A) Meito Ward Office	C) Meito Fire Station Hoshigaoka Branch	E) Meito Fire Station Yutakagaoka Branch
B) Meito Fire Station	D) Meito Fire Station Inokoishi Branch	F) Meito Public Works Office



duration of flooding Map

Flooding duration with a depth of 0.5m or more

- Less than 12 hours
- 12 hours to less than a day
- 1 day to less than 3 days
- 3 days to less than a week
- 1 week to less than 2 weeks
- 2 weeks and longer

Legend

- 0: Designated Emergency Evacuation Shelter (Places where you can take shelter from the danger of a flooding disaster in order to save your life.)
- Underpass (Areas where heavy rain will cause roads to be flooded and closed to traffic.)
- Landslide Disaster (Special) Warning Zone (Areas where landslides may occur.)
- Ward boundary (School district boundary (School districts are approximate. Please contact the respective ward office for further information.))
- Designated Emergency Evacuation Shelter outside the ward

We used the basic urban planning maps used between 2020 and 2021 to create this map. Corrections were made accordingly. We used the urban planning maps of the following places with their consent: Nishin City, Nagakute City and Owariasahi City. (Approval numbers - Nishin City: 7日都445, Nagakute City: 7長都2452 and Owariasahi City: 7都139) Landslide Disaster Hazard Map, Aichi Prefecture, Creative Commons License Attribution 2.1 Japan (<http://creativecommons.org/licenses/by/2.1/jp/>)