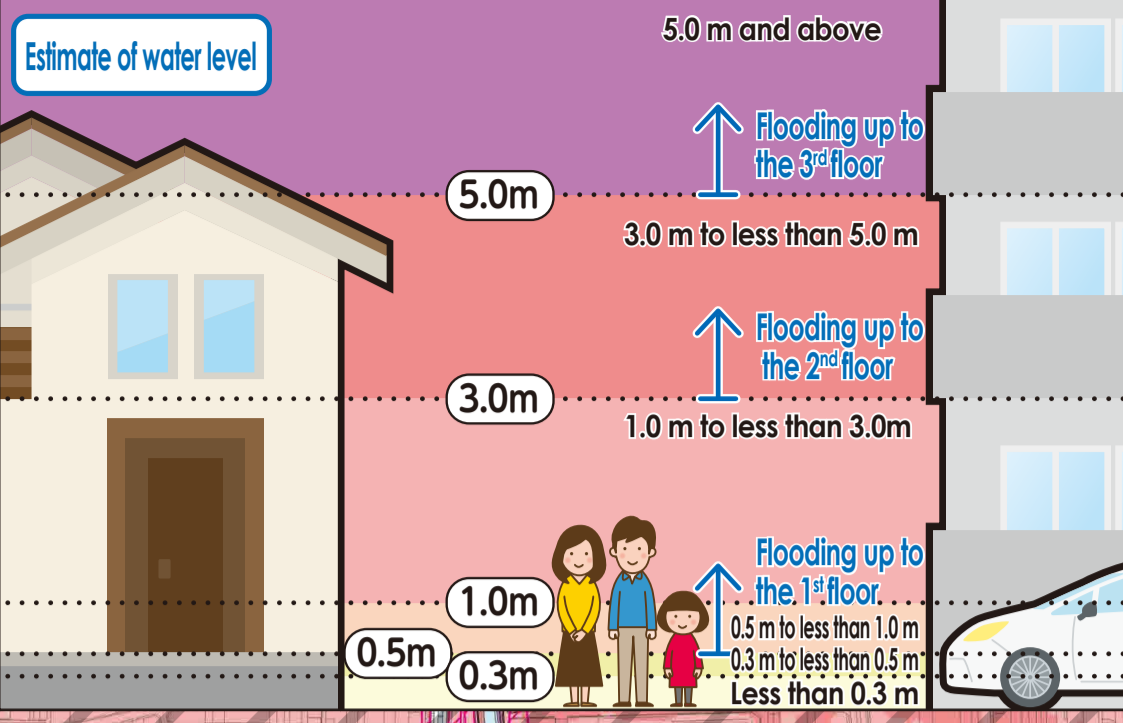


# Flood Hazard Map Kita Ward



duration of flooding Map



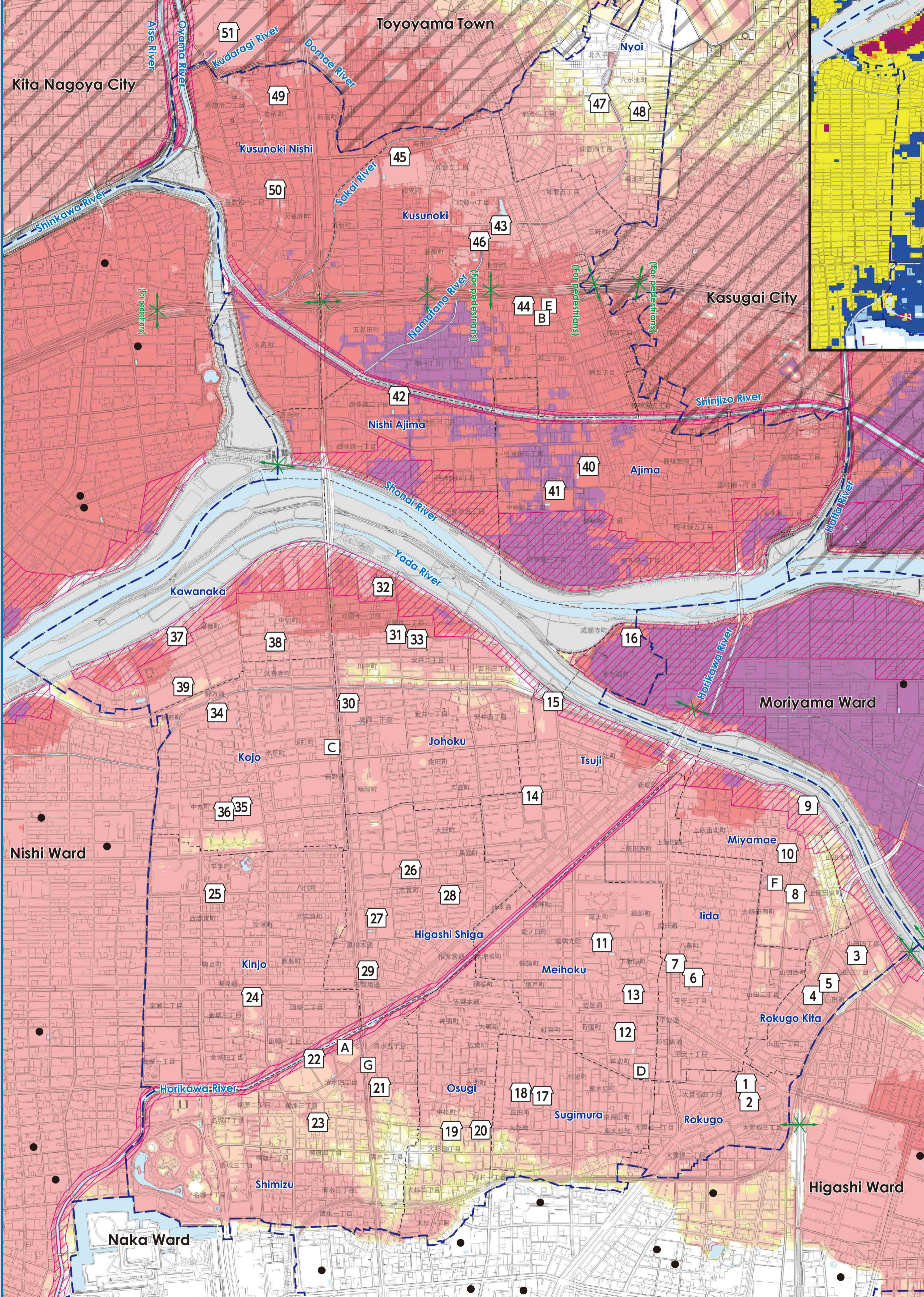
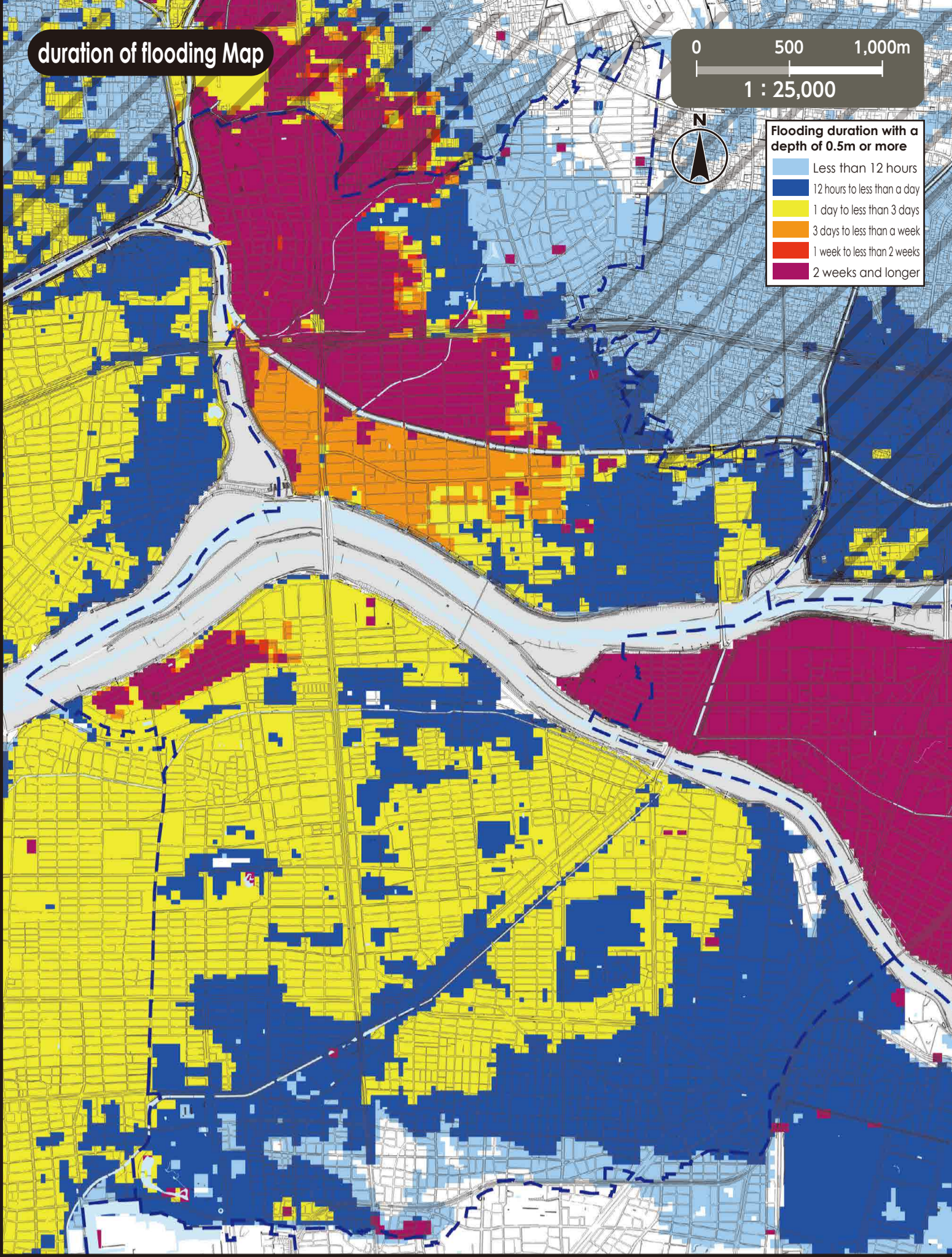
**Flooding risk areas including collapse of buildings**  
(In the event of a river flood, houses may collapse or be washed away due to overflowing water or erosion of riverbanks.)

When an evacuation information is emitted, residents living in these areas must evacuate to outer areas instead of going to upper floors.

**Flood depth**

- 10.0 m and above
- 5.0 m to less than 10.0 m
- 3.0 m to less than 5.0 m
- 1.0 m to less than 3.0 m
- 0.5 m to less than 1.0 m
- 0.3 m to less than 0.5 m
- Less than 0.3 m

The shaded areas are outside Nagoya City.



\*Please refer to the hazard maps of other wards to verify whether if their designated emergency evacuation shelters are open to our residents. Hazard Maps of all the wards are available on the official website of Nagoya City.

No.	Facility Name (Marked as □)	Address	Designated Emergency Evacuation Shelter Flood/ Inland flood
1	Rokugo Elementary School	15-82 Ozone 3-chome	2 <sup>nd</sup> floor or higher
2	Rokugo Community Center	15-90 Ozone 3-chome	2 <sup>nd</sup> floor or higher
3	Rokugo Kita Elementary School	14-56 Yamada 4-chome	2 <sup>nd</sup> floor or higher
4	Rokugo Kita Community Center	3-46 Yamada-cho	2 <sup>nd</sup> floor or higher
5	Yamada Kindergarten	4-42 Yamada-cho	2 <sup>nd</sup> floor or higher
6	Iida Elementary School	7-14 Heian 2-chome	2 <sup>nd</sup> floor or higher
7	Iida Community Center	3-24 Heian 2-chome	2 <sup>nd</sup> floor or higher
8	Miyamae Elementary School	4-1-2 Kamiida-minamimachi	2 <sup>nd</sup> floor or higher
9	Ozone Junior High School	2-100 Kamiida-higashimachi	2 <sup>nd</sup> floor or higher
10	Miyamae Community Center	4-53 Kamiida-higashimachi	2 <sup>nd</sup> floor or higher
11	Meihoku Elementary School	1-34 Shimoaida-cho	2 <sup>nd</sup> floor or higher
12	Wakaba Junior High School	2-16 Isono-cho	2 <sup>nd</sup> floor or higher
13	Meihoku Community Center	3-3-1 Shimoaida-cho	2 <sup>nd</sup> floor or higher
14	Tsuji Elementary School	1-32-4 Tsuji-cho	2 <sup>nd</sup> floor or higher
15	Tsuji Community Center	9-62-1 Tsuji-cho	2 <sup>nd</sup> floor or higher
16	Moriyama Water Treatment Center	3-1 Komegase-cho	3 <sup>rd</sup> floor or higher
17	Sugimura Elementary School	3-62 Choda-cho	2 <sup>nd</sup> floor or higher
18	Sugimura Community Center	6-87 Mizukiri-cho	2 <sup>nd</sup> floor or higher
19	Osugi Elementary School	9-21 Osugi 3-chome	2 <sup>nd</sup> floor or higher
20	Osugi Community Center	20-19 Osugi 3-chome	2 <sup>nd</sup> floor or higher
21	Shimizu Elementary School	3-1 Shimizu 5-chome	2 <sup>nd</sup> floor or higher
22	Hachioji Junior High School	4-1 Shimizu 4-chome	2 <sup>nd</sup> floor or higher (South school Building)
23	Shimizu Community Center	9-15 Yanagihara 3-chome	2 <sup>nd</sup> floor or higher
24	Kinjo Elementary School	11-6 Kinjo 3-chome	2 <sup>nd</sup> floor or higher
25	Kinjo Community Center	2-6 Hirate-cho	2 <sup>nd</sup> floor or higher
26	Higashi Shiga Elementary School	4-60-3 Shiga-cho	2 <sup>nd</sup> floor or higher
27	Hokuryo Junior High School	2-12 Shiga-cho	2 <sup>nd</sup> floor or higher
28	Higashi Shiga Community Center	5-2-9 Shiga-cho	2 <sup>nd</sup> floor or higher
29	Kita Lifelong Learning Center	2-16-3 Kurokawa-hondori	2 <sup>nd</sup> floor or higher
30	Johoku Elementary School	8-43 Hatooka 2-chome	2 <sup>nd</sup> floor or higher
31	Johoku Community Center	4-23 Yasui 2-chome	2 <sup>nd</sup> floor or higher
32	Kita Sports Center	6-12 Jogajji 1-chome	2 <sup>nd</sup> floor or higher
33	Nagoya Vocational Training Institute of Aichi Prefecture	4-48 Yasui 2-chome	2 <sup>nd</sup> floor or higher
34	Kojo Elementary School	4-1 Koonji-cho	2 <sup>nd</sup> floor or higher
35	Shiga Junior High School	3-2-1 Chumaru-cho	2 <sup>nd</sup> floor or higher
36	Kojo Community Center	3-2-3 Chumaru-cho	2 <sup>nd</sup> floor or higher
37	Kawanaka Elementary School	5-52 Fukutoku-cho	2 <sup>nd</sup> floor or higher
38	Nakagiri Meeting House	2-21 Nakagiri-cho	2 <sup>nd</sup> floor or higher
39	Prefectural Johoku Tsubasa High School	102 Fukutoku-cho 5-chome	2 <sup>nd</sup> floor or higher
40	Ajima Elementary School	126 Kusunoki Ajima 3-chome	3 <sup>rd</sup> floor or higher
41	Kita Junior High School	656 Naka Ajima 2-chome	3 <sup>rd</sup> floor or higher
42	Nishi Ajima Elementary School	526 Nishi Ajima 2-chome	3 <sup>rd</sup> floor or higher
43	Kusunoki Elementary School	309 Ikehana-cho	2 <sup>nd</sup> floor or higher
44	Kusunoki Junior High School	957 Kusunoki 2-chome	2 <sup>nd</sup> floor or higher
45	Kita High School	50 Nyurai-cho	2 <sup>nd</sup> floor or higher
46	Kusunoki Community Center	126 Wakazuru-cho	2 <sup>nd</sup> floor or higher
47	Noyi Elementary School	131 Noyi 3-chome	○
48	Noyi Hall *	39-2 Rokugaika-cho	○
49	Kusunoki Nishi Elementary School	89 Kaisho-cho	2 <sup>nd</sup> floor or higher
50	Kusunoki Nishi Community Center	367 Kisoji 1-chome	2 <sup>nd</sup> floor or higher
51	Nagoya Central Wholesale Market, Hokubu Market	107 Aza hattan Oaza toyoyama Toyoyama Town Nishi Kasugai District	2 <sup>nd</sup> floor or higher

\*Unavailable from June 2025 to around June 2026.

### Evacuation to Designated Emergency Evacuation Shelter

○ Please evacuate to a designated emergency evacuation shelter according to the type of disaster if you are in danger (especially when evacuation information (evacuation instruction, etc.) is released) and you cannot stay at home to save your life.

○ Designated emergency evacuation shelters within flooding risk areas including collapse of buildings have been confirmed to be structurally safe.

○ Please contact the ward office in advance to confirm the place you are going to if you intend to evacuate on your own command.

Nagoya City Disaster Countermeasures Office / Kita Ward Headquarters (Kita Ward Office)  
Tel: 911-3131 (Main) 917-6412~8 (Direct) Fax: 914-5752

### Public Office (Marked as □)

- [A] Kita Ward Office
- [B] Kita Ward Office Kusunoki Branch
- [C] Kita Fire Station
- [D] Kita Fire Station Iida Branch
- [E] Kita Fire Station Kusunoki Branch
- [F] Emergency Task Forces 3
- [G] Kita Public Works Office

### Legend

- Designated Emergency Evacuation Shelter  
Places where you can take shelter from the danger of a flooding disaster in order to save your life.
- ⚡ Underpass  
Areas where heavy rain will cause roads to be flooded and closed to traffic.
- Ward boundary
- School district boundary  
School districts are approximate. Please contact the respective ward office for further information.
- Designated Emergency Evacuation Shelter outside the ward

### (Descriptions)

- The inundation area as well as the depth and duration of flooding were calculated with the maximum possible rainfall in mind.
- The inundation area as well as the depth and duration of flooding are only assumptions. Flooding may occur at a larger scale depending on a variety of factors.
- This map was created looking into all the areas indicated on the expected inundation area maps published by the Ministry of Land, Infrastructure, Transport and Tourism (MLIT) and Aichi Prefecture. The deeper flooding depth and the longer flooding duration were indicated in areas that overlapped.

### ~Expected inundation area maps used to make this map (Kita ward)~

Expected Inundation Area Map	Issued by	Released on	Rainfall condition
Shonai/Yada Rivers	MLIT	Mar-2020	24-hour precipitation amount 578mm
Yada and Kanare Rivers basin	Aichi Prefecture	Mar-2025	24-hour precipitation amount 735mm (Yada River basin) 24-hour precipitation amount 836mm (Kanare River basin)
Shinkawa River basin	Aichi Prefecture	Nov-2024	24-hour precipitation amount 751mm (Shinkawa River basin) 24-hour precipitation amount 736mm (Gojo River basin(downstream)) 24-hour precipitation amount 815mm (Gojo River basin(upstream) / Oyama River basin) 24-hour precipitation amount 805mm (Aoki River basin) 24-hour precipitation amount 836mm (Tributary streams)
Horikawa River basin	Aichi Prefecture	Mar-2025	24-hour precipitation amount 793mm (Horikawa and Shinhorikawa Rivers basin)
Hotta River basin	Aichi Prefecture	Nov-2024	24-hour precipitation amount 836mm
Utsutsu River basin	Aichi Prefecture	Nov-2024	24-hour precipitation amount 836mm

We used the basic urban planning maps used between 2020 and 2021 to create this map. Corrections were made accordingly.  
We used the urban planning maps of the following places with their consent: Kasugai City, Toyoyama Town and Kita Nagoya City. (Approval numbers - Kasugai City: 7春都政714, Toyoyama Town: 7豊防抛345, Kita Nagoya City: 7北都162)