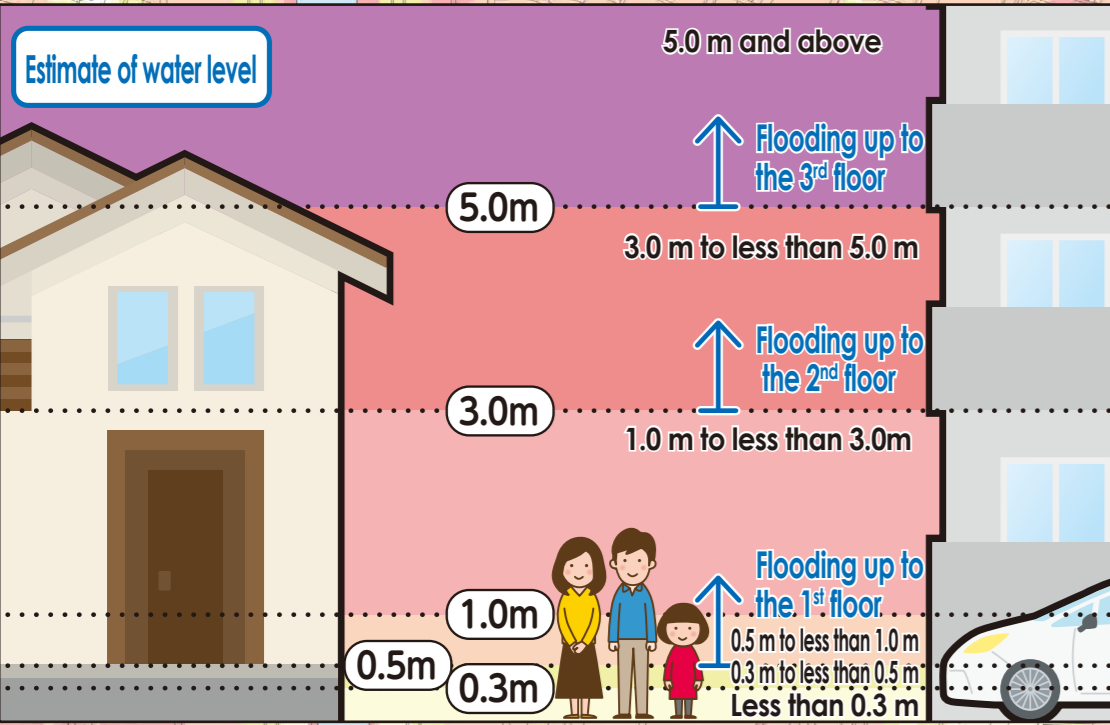
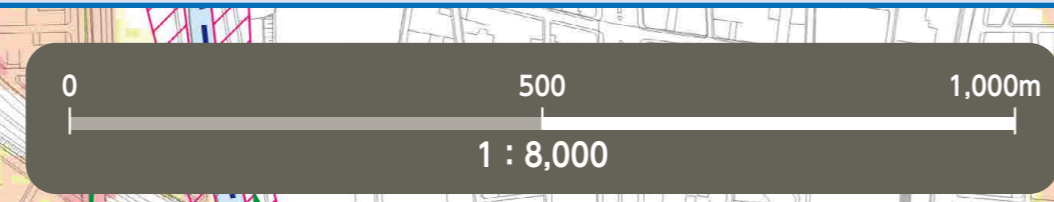


Flood Hazard Map Atsuta Ward

As of August, 2025

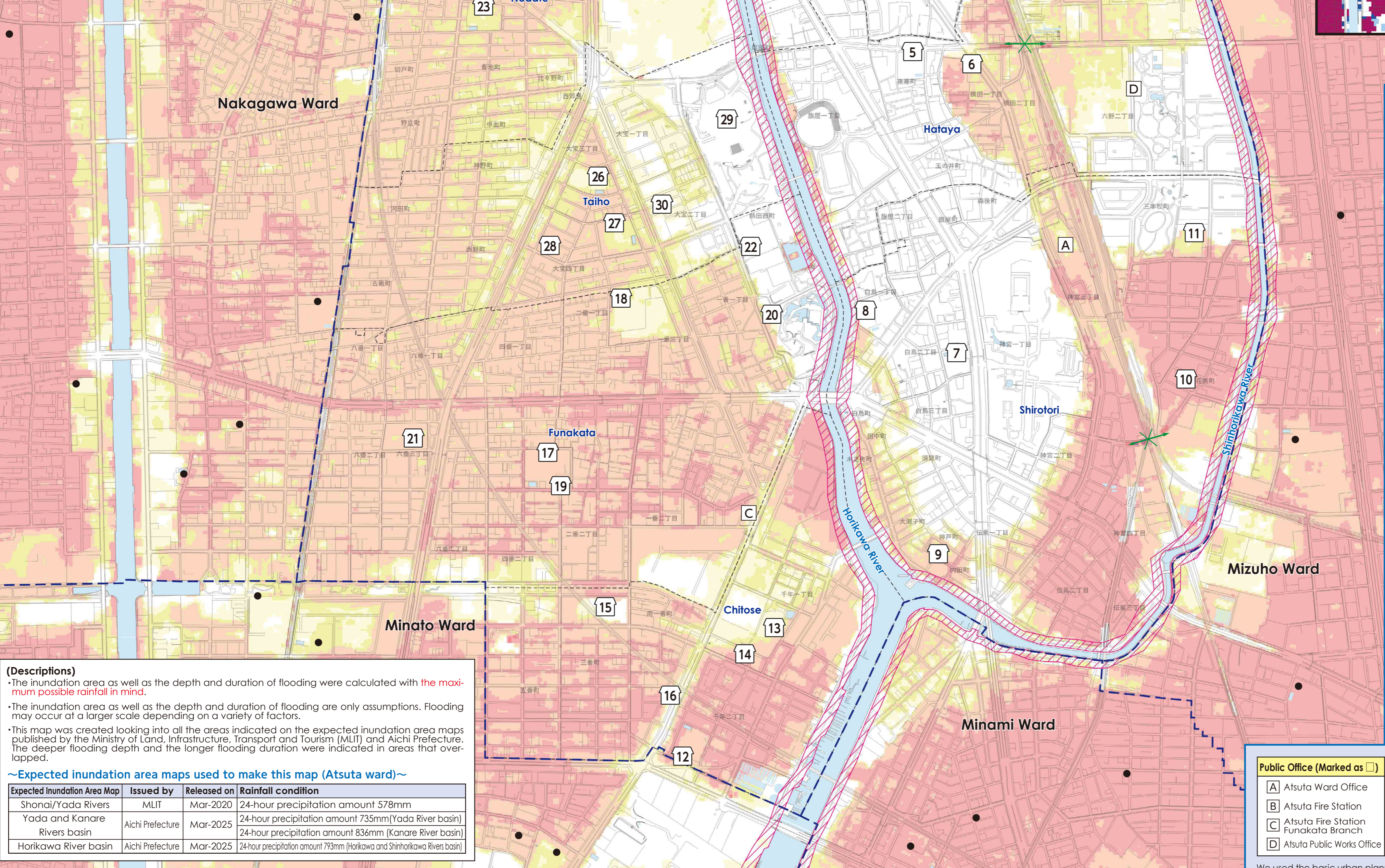
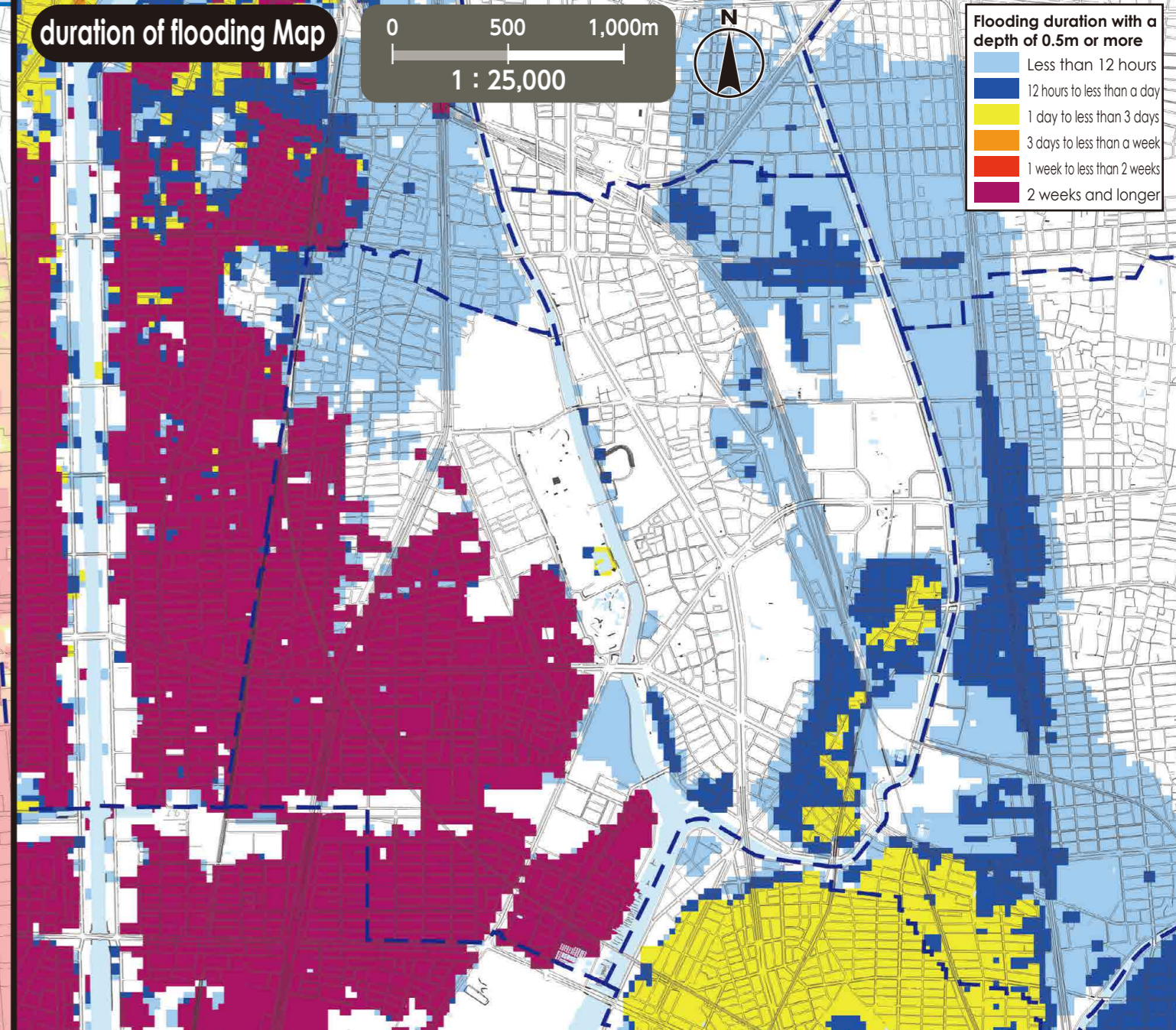


Flood depth

10.0 m and above
5.0 m to less than 10.0 m
3.0 m to less than 5.0 m
1.0 m to less than 3.0 m
0.5 m to less than 1.0 m
0.3 m to less than 0.5 m
Less than 0.3 m

Flooding risk areas including collapse of buildings (In the event of a river flood, houses may collapse or be washed away due to overflowing water or erosion of riverbanks.)

When an evacuation information is emitted, residents living in these areas must evacuate to outer areas instead of going to upper floors.



*Please refer to the hazard maps of other wards to verify whether if their designated emergency evacuation shelters are open to our residents. Hazard Maps of all the wards are available on the official website of Nagoya City.

No.	Facility Name (Marked as □)	Address	Designated Emergency Evacuation Shelter Flood/ Inland flood
1	Takakura Elementary School	7-33 Hana-cho	○
2	Sawakami Junior High School	4-4 Gohonmatsu-cho	○
3	Takakura Community Center	7-8 Sawakami 2-chome	○
4	Labor Assembly Hall	9-3 Sawashita-cho	2nd floor or higher
5	Hataya Elementary School	5-1 Yosamu-cho	○
6	Hataya Community Center	1-13 Yokota 1-chome	2nd floor or higher
7	Shirotori Elementary School	13-12 Shirotori 2-chome	○
8	Miya Junior High School	3-46 Shirotori 1-chome	2nd floor or higher
9	Shirotori Community Center	802 Godo-cho	2nd floor or higher
10	Tokai Polytechnic College	19-14 Hanaomate-cho	2nd floor or higher
11	Minami Special Support School	23-26 Sambommatsu-cho	2nd floor or higher
12	Chitose Elementary School	38-26 Chitose 2-chome	2nd floor or higher
13	Prefectural Atsuta Senior High School	17-71 Chitose 1-chome	2nd floor or higher
14	Chitose Community Center	18-2 Chitose 1-chome	2nd floor or higher
15	Aichi Machine Industry Co.,Ltd. (gymnasium)	2-14 Samban-cho	2nd floor or higher
16	Hattorigumi Co.,Ltd. Head office building	20-3 Minami Ichiban-cho	○
17	Funakata Elementary School	10-43 Yomban 2-chome	2nd floor or higher
18	Hibino Junior High School South Bldg.	2-60 Ichiban 3-chome	2nd floor or higher
19	Funakata Community Center	10-16 Yomban 2-chome	2nd floor or higher
20	Atsuta Lifelong Learning Center	2-13 Atsuta-nishimachi	2nd floor or higher
21	Nagoya Municipal Industrial Research Institute	4-41 Rokuban 3-chome	2nd floor or higher
22	Nagoya Gakuin University Nagoya Campus Shirotori	1-25 Atsuta-nishimachi	○
23	Nodate Elementary School	2-21 Aoike-cho	2nd floor or higher
24	Nodate Community Center	13-19 Akeno-cho	2nd floor or higher
25	Nagoya Central Wholesale Market Honjo	2-22 Kawanami-cho	○
26	Taiho Elementary School	8-43 Taiho 3-chome	2nd floor or higher
27	Hibino Junior High School	2-45 Taiho 4-chome	2nd floor or higher
28	Taiho Community Center	7-22 Taiho 4-chome	2nd floor or higher
29	Nagoya Congress Center	1-1 Atsuta-nishimachi	x *1
30	Nagoya Gakuin University Nagoya Campus Taiho Kotobakan/Megumikan	4-45 Taiho 2-chome	2nd floor or higher

*1 No access to the building from February 2025 to March 2027.

(Descriptions)

- The inundation area as well as the depth and duration of flooding were calculated with the maximum possible rainfall in mind.
- The inundation area as well as the depth and duration of flooding are only assumptions. Flooding may occur at a larger scale depending on a variety of factors.
- This map was created looking into all the areas indicated on the expected inundation area maps published by the Ministry of Land, Infrastructure, Transport and Tourism (MLIT) and Aichi Prefecture. The deeper flooding depth and the longer flooding duration were indicated in areas that overlapped.

~Expected inundation area maps used to make this map (Atsuta ward)~

Expected Inundation Area Map	Issued by	Released on	Rainfall condition
Shonai/Yada Rivers	MLIT	Mar-2020	24-hour precipitation amount 578mm
Yada and Kanare Rivers basin	Aichi Prefecture	Mar-2025	24-hour precipitation amount 735mm(Yada River basin) 24-hour precipitation amount 836mm (Kanare River basin)
Horikawa River basin	Aichi Prefecture	Mar-2025	24-hour precipitation amount 793mm (Horikawa and Shinhorikawa Rivers basin)

Evacuation to Designated Emergency Evacuation Shelter

○ Please evacuate to a designated emergency evacuation shelter according to the type of disaster if you are in danger (especially when evacuation information (evacuation instruction, etc.) is released) and you cannot stay at home to save your life.

○ Please contact the ward office in advance to confirm the place you are going is safe if you intend to evacuate on your own command.

Nagoya City Disaster Countermeasures Office /Atsuta Ward Headquarters (Atsuta Ward Office)
Tel: 681-1431 (Main) 683-9411~4 (Direct) Fax: 682-1496

Public Office (Marked as □)

A	Atsuta Ward Office
B	Atsuta Fire Station
C	Atsuta Fire Station Funakata Branch
D	Atsuta Public Works Office

Legend

0	Designated Emergency Evacuation Shelter
○	Places where you can take shelter from the danger of a flooding disaster in order to save your life.
⚡	Underpass
⚡	Areas where heavy rain will cause roads to be flooded and closed to traffic.
---	School district boundary
---	School districts are approximate. Please contact the respective ward office for further information.
●	Designated Emergency Evacuation Shelter outside the ward

We used the basic urban planning maps used between 2020 and 2021 to create this map. Corrections were made accordingly.