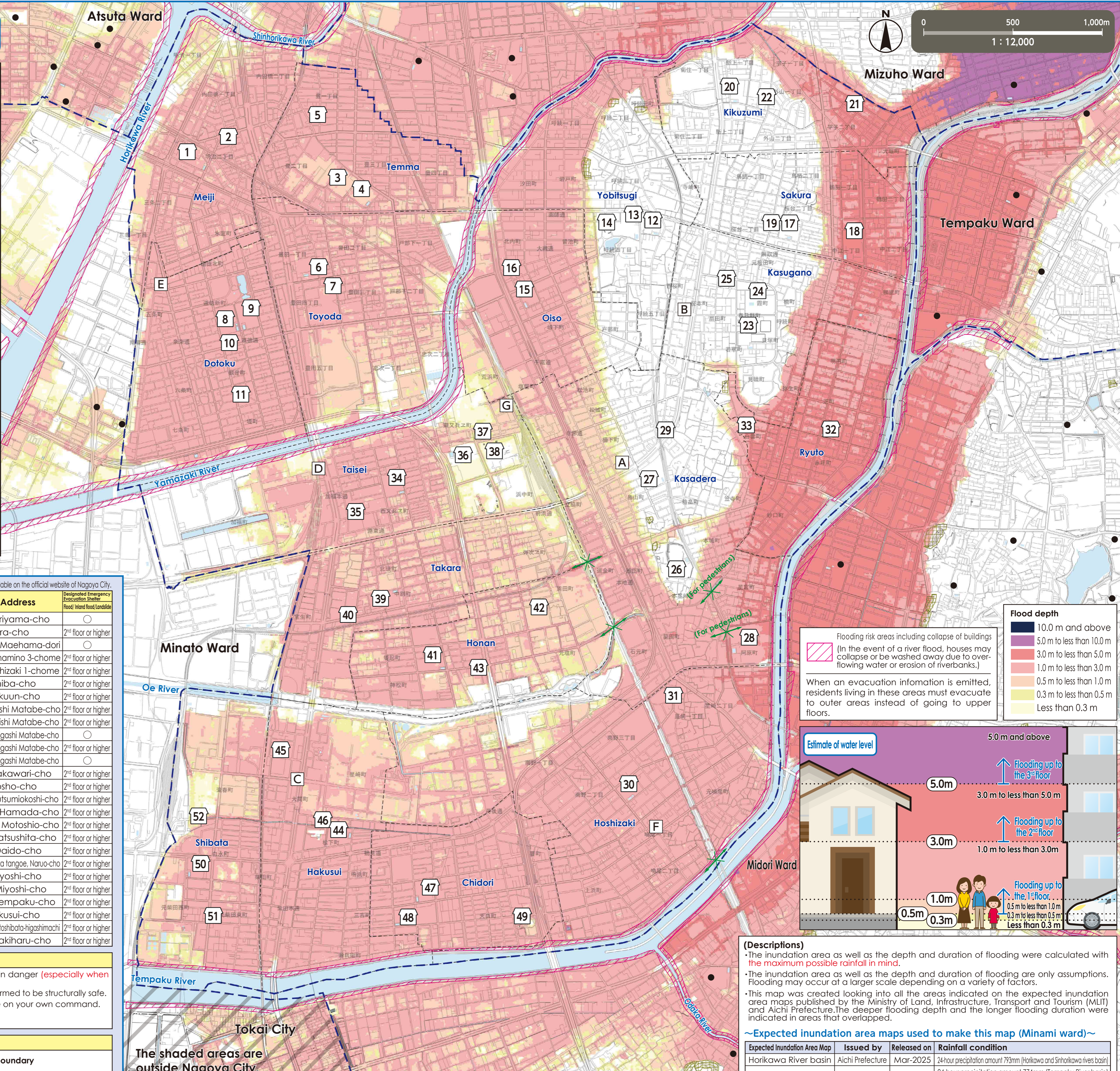
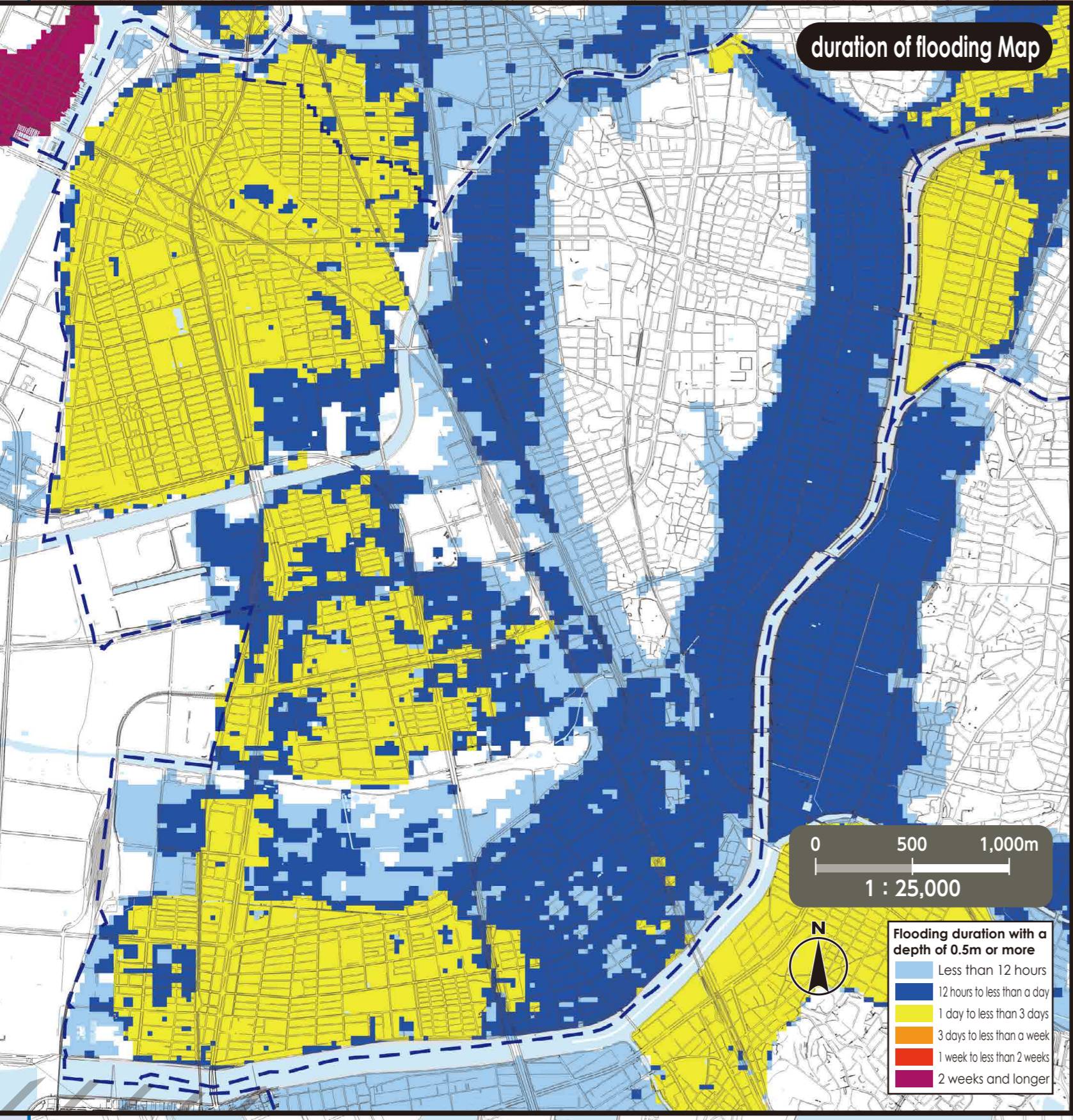


Flood Hazard Map

Minami Ward

As of June, 2022



*Please refer to the hazard maps of other wards to verify whether if their designated emergency evacuation shelters are open to our residents. Hazard Maps of all the wards are available on the official website of Nagoya City.

No.	Facility Name (Marked as □)	Address	Designated Emergency Evacuation Shelter (Floor/Inland flood/Landslide)
1	Meiji Elementary School	3-50 Meiji 2-chome	2 nd floor or higher
2	Meiji Community Center	14-1 Meiji 2-chome	2 nd floor or higher
3	Temma Elementary School	38-9 Yutaka 2-chome	2 nd floor or higher
4	Meiho Junior High School	39-3 Yutaka 2-chome	2 nd floor or higher
5	Temma Community Center	37-8 Yutaka 1-chome	2 nd floor or higher
6	Toyoda Elementary School	19-23 Toyoda 1-chome	2 nd floor or higher
7	Toyoda Community Center	9-19 Toyoda 4-chome	2 nd floor or higher
8	Dotoku Elementary School	5-43 Dotoku-shimmachi	2 nd floor or higher
9	Oe Junior High School	5-48 Dotoku-shimmachi	2 nd floor or higher
10	Community Center Dotoku	2-72 Dotoku-tori	2 nd floor or higher
11	Dotoku Nursery School	6-20 Kannon-cho	2 nd floor or higher
12	Yobitsugi Elementary School	17-10 Yobitsugi 4-chome	○
13	Shinko Junior High School	4-8 Yobitsugi 4-chome	○
14	Yobitsugi Community Center	4-60 Yobitsugi 4-chome	○
15	Oiso Elementary School	5-1 Kitauchi-cho	2 nd floor or higher
16	Oiso Community Center	3-25 Kitauchi-cho	2 nd floor or higher
17	Sakura Elementary School	13-38 Sakuradai 2-chome	○
18	Sakurada Junior High School	4-52 Nakae 1-chome	2 nd floor or higher
19	Sakura Community Center	15-4 Sakuradai 2-chome	○
20	Kikuzumi Elementary School	12-37 Kakeage 1-chome	○
21	Tsukihiko Okamichi Church Headquarters	7-14 Hirako 2-chome	2 nd floor or higher
22	Kikuzumi Community Center	14-13 Kakeage 1-chome	○
23	Kasugano Elementary School	9-1 Kasugano-cho	○
24	Sakuradai Senior High School	21 Kasumi-cho	○
25	Kasugano Community Center	77 Kasumi-cho	○
26	Kasadera Elementary School	765 Aza honjo, Matahoshizaki-cho	○

No.	Facility Name (Marked as □)	Address	Designated Emergency Evacuation Shelter (Floor/Inland flood/Landslide)
27	Honjo Junior High School	3-1 Toriyama-cho	○
28	Prefectural Nagoya Technology High School	1 Ahara-cho	2 nd floor or higher
29	Kasadera Community Center	5-2-31 Maehama-dori	○
30	Hoshizaki Elementary School	163 Minamino 3-chome	2 nd floor or higher
31	Hoshizaki Community Center	52 Hoshizaki 1-chome	2 nd floor or higher
32	Ryuto Elementary School	113 Shiba-cho	2 nd floor or higher
33	Ryuto Community Center	57 Hakuun-cho	2 nd floor or higher
34	Taisei Elementary School	3-76 Nishi Matabe-cho	2 nd floor or higher
35	Taisei Fureai Center	4-8-1 Nishi Matabe-cho	2 nd floor or higher
36	Prefectural Nagoya Minami High School	5-1-11 Higashi Matabe-cho	○
37	Minami Lifelong Learning Center	5-1-10 Higashi Matabe-cho	2 nd floor or higher
38	NGK Sports Plaza	5-1-16 Higashi Matabe-cho	○
39	Takara Elementary School	2-5 Nakawari-cho	2 nd floor or higher
40	Takara Community Center	2-2 Hoshio-cho	2 nd floor or higher
41	Honan Elementary School	3-48 Tsutsumikoshi-cho	2 nd floor or higher
42	Nanko Junior High School	4-119 Hamada-cho	2 nd floor or higher
43	Honan Community Center	1-20-6 Motoshio-cho	2 nd floor or higher
44	Hakusui Elementary School	2-1 Matsushita-cho	2 nd floor or higher
45	Daido University Daido Senior High School	2-21 Daido-cho	2 nd floor or higher
46	Hakusui Community Center	3023-3 Aza tangoe, Naruo-cho	2 nd floor or higher
47	Chidori Elementary School	6-1 Miyoshi-cho	2 nd floor or higher
48	Meinan Junior High School	5-43 Miyoshi-cho	2 nd floor or higher
49	Chidori Community Center	4-22 Tempaku-cho	2 nd floor or higher
50	Shibata Elementary School	19 Hakusui-cho	2 nd floor or higher
51	Tsuidoino-yakata Wako	2-20-2 Motoshibata-higashimachi	2 nd floor or higher
52	Daido University	10-3 Takihar-cho	2 nd floor or higher

Evacuation to Designated Emergency Evacuation Shelter

○ Please evacuate to a designated emergency evacuation shelter according to the type of disaster if you are in danger (especially when evacuation information (evacuation instruction, etc.) is released) and you cannot stay at home to save your life.

○ Designated emergency evacuation shelters within flooding risk areas including collapse of buildings have been confirmed to be structurally safe.

○ Please contact the ward office in advance to confirm the place you are going is safe if you intend to evacuate on your own command.

Nagoya City Disaster Countermeasures Office / Minami Ward Headquarters (Minami Ward Office)
Tel: 811-5161 (Main) 823-9311~6 (Direct) Fax: 811-6360

Public Office (Marked as □)

A	Minami Ward Office	E	Minami Fire Station Dotoku Branch
B	Minami Fire Station Oe Branch	F	Minami Fire Station Hoshizaki Branch
C	Minami Fire Station Chidori Branch	G	Minami Public Works Office
D	Minami Fire Station Oe Branch		

Legend

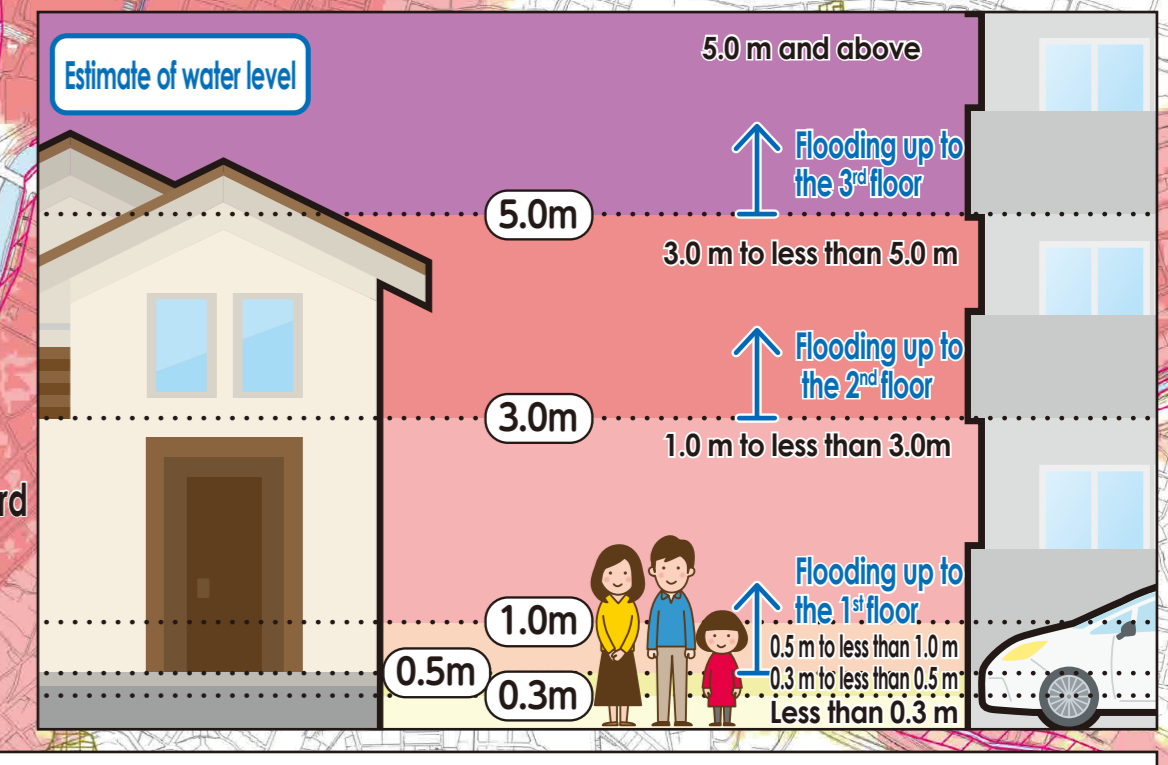
○	Designated Emergency Evacuation Shelter (Places where you can take shelter from the danger of a flooding disaster in order to save your life.)	—	Ward boundary
+	Underpass (Areas where heavy rain will cause roads to be flooded and closed to traffic.)	- - -	School district boundary (School districts are approximate. Please contact the respective ward office for further information.)
■	Landslide Disaster (Special) Warning Zone (Areas where landslides may occur.)	●	Designated Emergency Evacuation Shelter outside the ward

Flood depth

- 10.0 m and above
- 5.0 m to less than 10.0 m
- 3.0 m to less than 5.0 m
- 1.0 m to less than 3.0 m
- 0.5 m to less than 1.0 m
- 0.3 m to less than 0.5 m
- Less than 0.3 m

Flooding risk areas including collapse of buildings (In the event of a river flood, houses may collapse or be washed away due to overflowing water or erosion of riverbanks.)

When an evacuation information is emitted, residents living in these areas must evacuate to outer areas instead of going to upper floors.



(Descriptions)

- The inundation area as well as the depth and duration of flooding were calculated with the maximum possible rainfall in mind.
- The inundation area as well as the depth and duration of flooding are only assumptions. Flooding may occur at a larger scale depending on a variety of factors.
- This map was created looking into all the areas indicated on the expected inundation area maps published by the Ministry of Land, Infrastructure, Transport and Tourism (MLIT) and Aichi Prefecture. The deeper flooding depth and the longer flooding duration were indicated in areas that overlapped.

~Expected inundation area maps used to make this map (Minami ward)~

Expected Inundation Area Map	Issued by	Released on	Rainfall condition
Horikawa River basin	Aichi Prefecture	Mar-2025	24-hour precipitation amount 793mm (Horikawa and Shinhorikawa rivers basin)
Tempaku River basin	Aichi Prefecture	Mar-2025	24-hour precipitation amount 774mm (Tempaku River basin)
Yamazaki River basin	Aichi Prefecture	Mar-2025	24-hour precipitation amount 836mm (Ogi River basin)

We used the basic urban planning maps used between 2020 and 2021 to create this map. Corrections were made accordingly.
We used the urban planning maps of the following places with their consent: Tokai City. (Approval number - Tokai City: 都54)
Landslide Disaster Hazard Map, Aichi Prefecture, Creative Commons License Attribution 2.1 Japan (<http://creativecommons.org/licenses/by/2.1/jp/>)