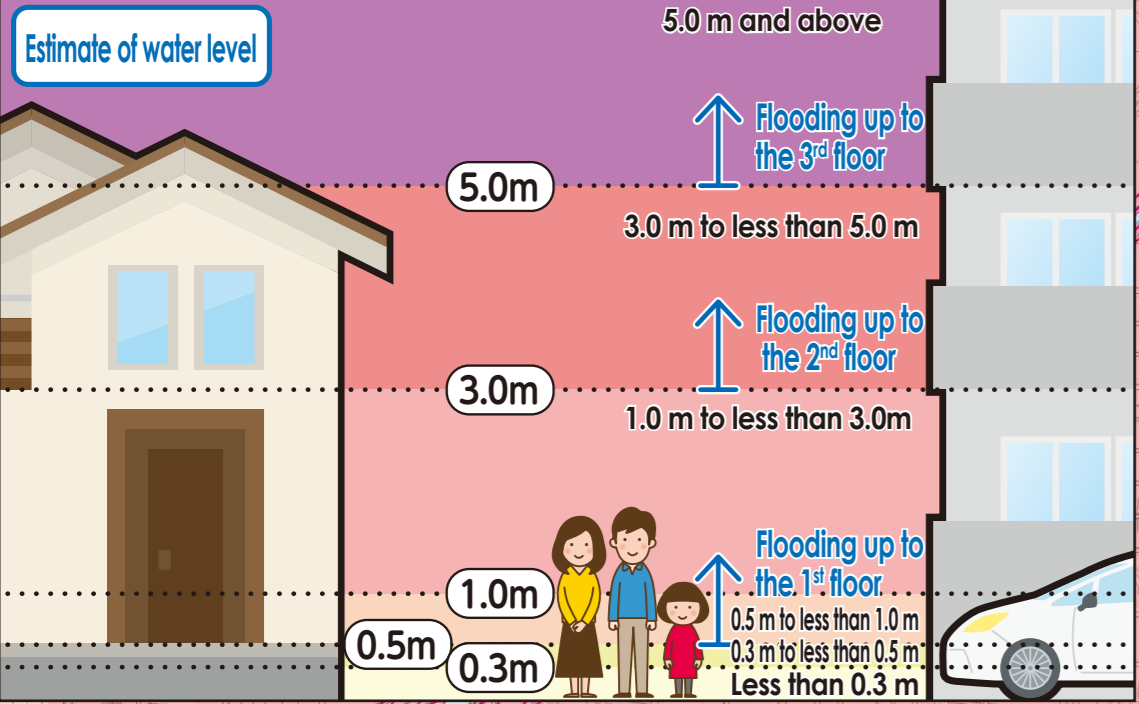
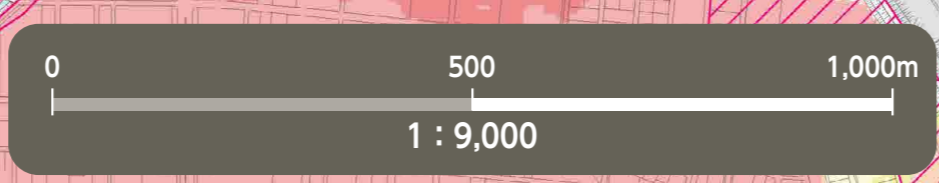


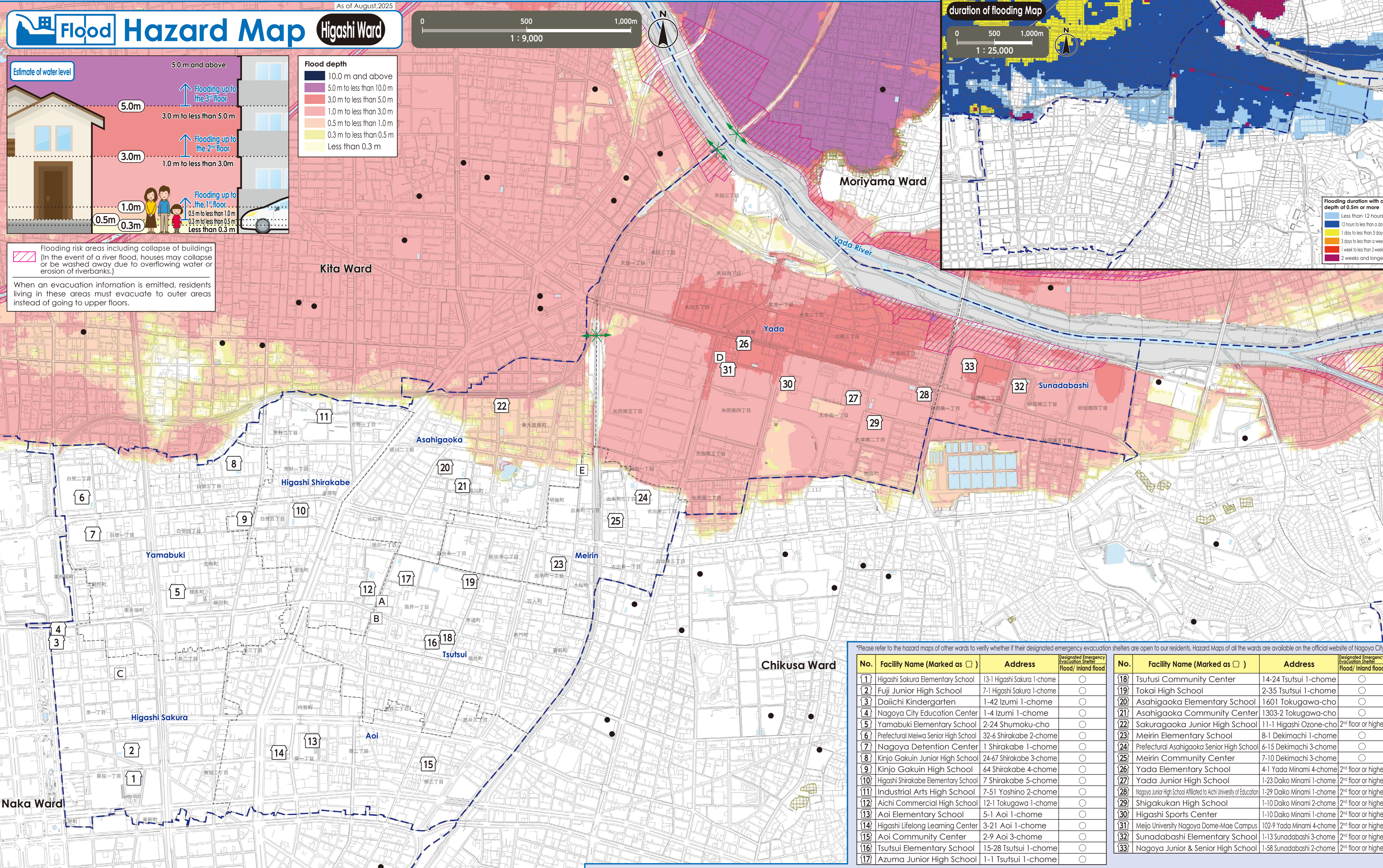
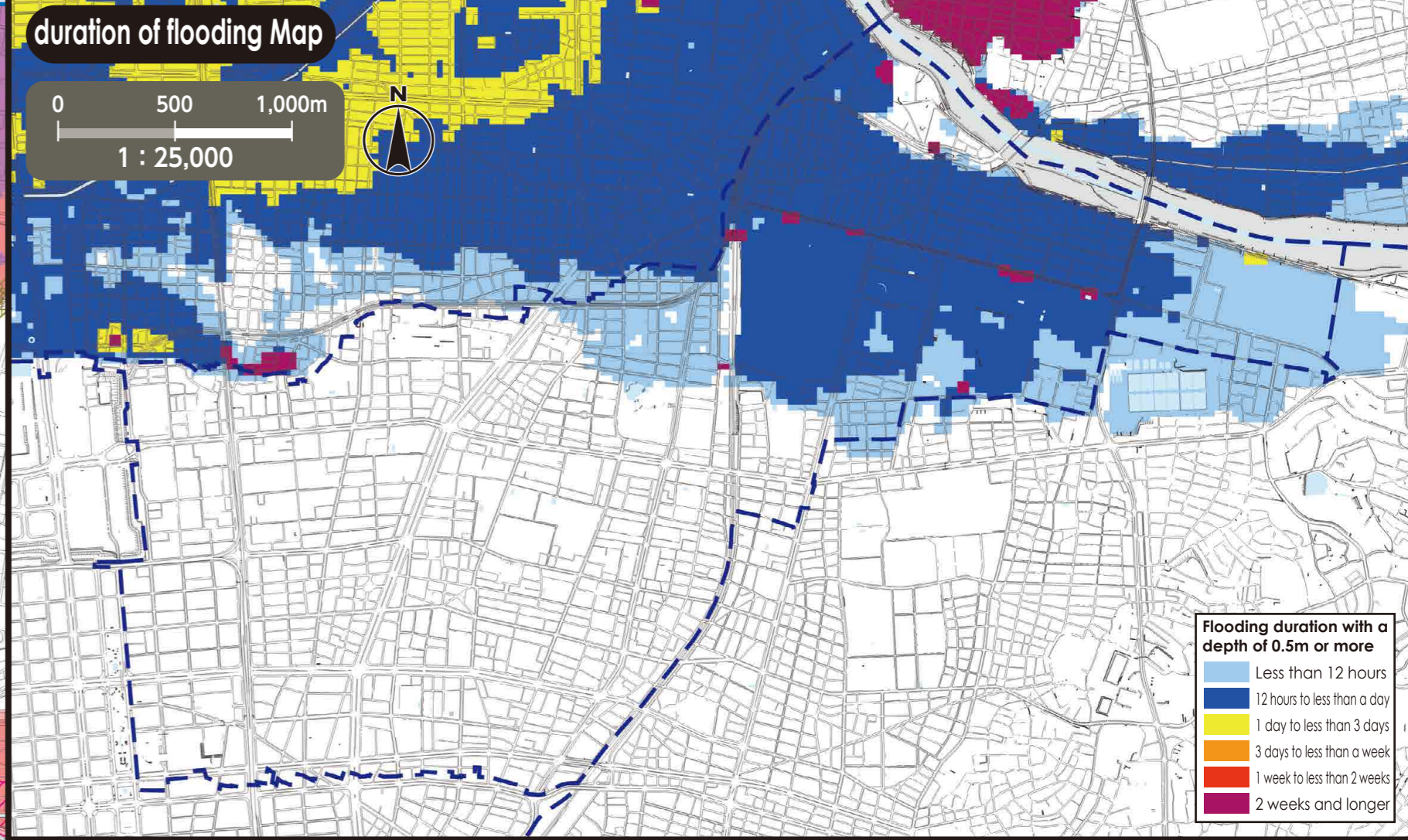
Flood Hazard Map Higashi Ward



10.0 m and above
5.0 m to less than 10.0 m
3.0 m to less than 5.0 m
1.0 m to less than 3.0 m
0.5 m to less than 1.0 m
0.3 m to less than 0.5 m
Less than 0.3 m

Flooding risk areas including collapse of buildings
(In the event of a river flood, houses may collapse or be washed away due to overflowing water or erosion of riverbanks.)

When an evacuation information is emitted, residents living in these areas must evacuate to outer areas instead of going to upper floors.



(Descriptions)

- The inundation area as well as the depth and duration of flooding were calculated with the **maximum possible rainfall in mind**.
- The inundation area as well as the depth and duration of flooding are only assumptions. Flooding may occur at a larger scale depending on a variety of factors.
- This map was created looking into all the areas indicated on the expected inundation area maps published by the Ministry of Land, Infrastructure, Transport and Tourism (MLIT) and Aichi Prefecture. The deeper flooding depth and the longer flooding duration were indicated in areas that overlapped.

~Expected inundation area maps used to make this map (Higashi Ward)~

Expected Inundation Area Map	Issued by	Released on	Rainfall condition
Shonai/Yada Rivers	MLIT	Mar-2020	24-hour precipitation amount 578mm
Yada and Kanare Rivers basin	Aichi Prefecture	Mar-2025	24-hour precipitation amount 735mm (Yada River basin) 24-hour precipitation amount 836mm (Kanare River basin)

- Public Office (Marked as □)**
- A Higashi Ward Office
 - B Higashi Fire Station
 - C Higashi Fire Station Fujizuka Branch
 - D Higashi Fire Station Yada Branch
 - E Higashi Public Works Office

- Legend**
- 0 Designated Emergency Evacuation Shelter
Places where you can take shelter from the danger of a flooding disaster in order to save your life.
 - Underpass
Areas where heavy rain will cause roads to be flooded and closed to traffic.
 - Landslide Disaster (Special) Warning Zone
Areas where landslides may occur.
 - Ward Boundary
 - School district boundary
School districts are approximate. Please contact the respective ward office for further information.
 - Designated Emergency Evacuation Shelter outside the ward

Evacuation to Designated Emergency Evacuation Shelter

○ Please evacuate to a designated emergency evacuation shelter according to the type of disaster if you are in danger (especially when evacuation information (evacuation instruction, etc.) is released) and you cannot stay at home to save your life.

○ Designated emergency evacuation shelters within flooding risk areas including collapse of buildings have been confirmed to be structurally safe.

○ Please contact the ward office in advance to confirm the place you are going is safe if you intend to evacuate on your own command.

Nagoya City Disaster Countermeasures Office /Higashi Ward Headquarters (Higashi Ward Office)
Tel: 935-2271 (Main) 934-1111~6 (Direct) Fax: 935-5866

*Please refer to the hazard maps of other wards to verify whether if their designated emergency evacuation shelters are open to our residents. Hazard Maps of all the wards are available on the official website of Nagoya City.

No.	Facility Name (Marked as □)	Address	Designated Emergency Evacuation Shelter / Flood/ Inland flood	No.	Facility Name (Marked as □)	Address	Designated Emergency Evacuation Shelter / Flood/ Inland flood
1	Higashi Sakura Elementary School	13-1 Higashi Sakura 1-chome	○	18	Tsutsui Community Center	14-24 Tsutsui 1-chome	○
2	Fuji Junior High School	7-1 Higashi Sakura 1-chome	○	19	Tokai High School	2-35 Tsutsui 1-chome	○
3	Daiichi Kindergarten	1-42 Izumi 1-chome	○	20	Asahigaoka Elementary School	1601 Tokugawa-cho	○
4	Nagoya City Education Center	1-4 Izumi 1-chome	○	21	Asahigaoka Community Center	1303-2 Tokugawa-cho	○
5	Yamabuki Elementary School	2-24 Shumoku-cho	○	22	Sakuragaoka Junior High School	11-1 Higashi Ozone-cho	2nd floor or higher
6	Prefectural Meiwa Senior High School	32-6 Shirakabe 2-chome	○	23	Meirin Elementary School	8-1 Dekimachi 1-chome	○
7	Nagoya Detention Center	1 Shirakabe 1-chome	○	24	Prefectural Asahigaoka Senior High School	6-15 Dekimachi 3-chome	○
8	Kinjo Gakuin Junior High School	24-67 Shirakabe 3-chome	○	25	Meirin Community Center	7-10 Dekimachi 3-chome	○
9	Kinjo Gakuin High School	64 Shirakabe 4-chome	○	26	Yada Elementary School	4-1 Yada Minami 4-chome	2nd floor or higher
10	Higashi Shirakabe Elementary School	7 Shirakabe 5-chome	○	27	Yada Junior High School	1-23 Daiko Minami 1-chome	2nd floor or higher
11	Industrial Arts High School	7-51 Yoshino 2-chome	○	28	Nagoya Junior High School Affiliated to Aichi University of Education	1-29 Daiko Minami 1-chome	2nd floor or higher
12	Aichi Commercial High School	12-1 Tokugawa 1-chome	○	29	Shigakukan High School	1-10 Daiko Minami 2-chome	2nd floor or higher
13	Aoi Elementary School	5-1 Aoi 1-chome	○	30	Higashi Sports Center	1-10 Daiko Minami 1-chome	2nd floor or higher
14	Higashi Lifelong Learning Center	3-21 Aoi 1-chome	○	31	Meijo University Nagoya Dome-Mae Campus	102-9 Yada Minami 4-chome	2nd floor or higher
15	Aoi Community Center	2-9 Aoi 3-chome	○	32	Sunadabashi Elementary School	1-13 Sunadabashi 3-chome	2nd floor or higher
16	Tsutsui Elementary School	15-28 Tsutsui 1-chome	○	33	Nagoya Junior & Senior High School	1-58 Sunadabashi 2-chome	2nd floor or higher
17	Azuma Junior High School	1-1 Tsutsui 1-chome	○				