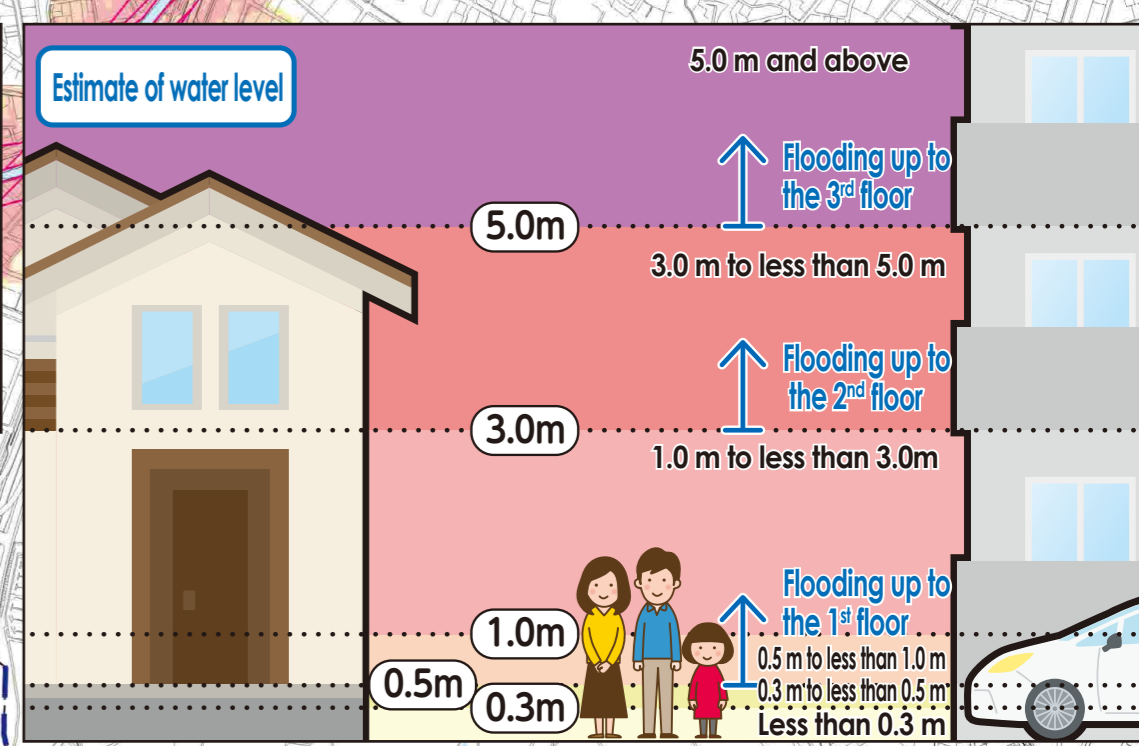
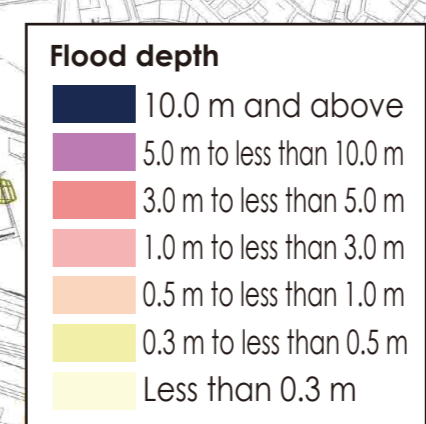
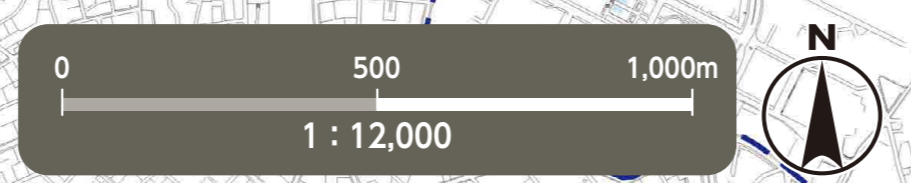


Flood Hazard Map Tempaku Ward

As of August, 2025



Flooding risk areas including collapse of buildings (In the event of a river flood, houses may collapse or be washed away due to overflowing water or erosion of riverbanks.)

When an evacuation information is emitted, residents living in these areas must evacuate to outer areas instead of going to upper floors.

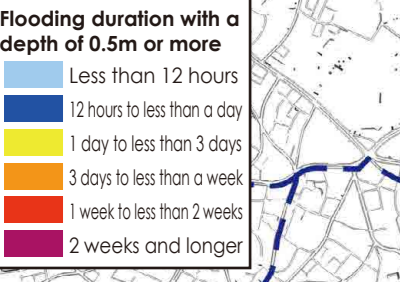
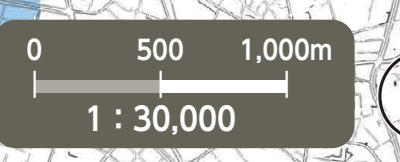
(Descriptions)

- The inundation area as well as the depth and duration of flooding were calculated with the **maximum possible rainfall in mind.**
- The inundation area as well as the depth and duration of flooding are only assumptions. Flooding may occur at a larger scale depending on a variety of factors.
- This map was created looking into all the areas indicated on the expected inundation area maps published by the Ministry of Land, Infrastructure, Transport and Tourism (MLIT) and Aichi Prefecture. The deeper flooding depth and the longer duration of flooding were indicated in areas that overlapped.

~Expected inundation area maps used to make this map (Tempaku ward)~

Expected Inundation Area Map	Issued by	Released on	Rainfall condition
Tempaku River basin	Aichi Prefecture	Mar-2025	24-hour precipitation amount 774mm (Tempaku River basin) 24-hour precipitation amount 836mm (Ogi River basin)

duration of flooding Map



*Please refer to the hazard maps of other wards to verify whether if their designated emergency evacuation shelters are open to our residents. Hazard Maps of all the wards are available on the official website of Nagoya City.

No.	Facility Name (Marked as □)	Address	Designated Emergency Evacuation Shelter (Flood/land flood/Landslide)
1	Hirabari Minami Elementary School	402 Hirabari Minami 4-chome	○
2	Hirabari Minami Community Center	113 Hirabari Minami 1-chome	○
3	Hirabari Elementary School	620 Mukaigaoka 1-chome	○
4	Hirabari Junior High School	701 Nakahira 4-chome	○
5	Hirabari Kita Elementary School	501 Hirabari 1-chome	○
6	Hirabari Kita Community Center	1415 Hirabari 1-chome	○
7	Hara Elementary School	601 Hara 5-chome	○
8	Hara Junior High School	1902-1 Hara 4-chome	○
9	Hara Community Center	1902-3 Hara 4-chome	○
10	Ueda Elementary School	1201 Ueda-hommachi 1-chome	○
11	Ueda Junior High School	702 Ueda-hommachi 1-chome	○
12	Ueda Community Center	301 Motoueda 2-chome	○
13	Ueda Minami Elementary School	301 Ueda 3-chome	○
14	Ueda Minami Community Center	810 Ueda 1-chome	○
15	Tempaku Sports Center	1502 Ueda 3-chome	2 nd floor or higher
16	Ueda Kita Elementary School	1302 Yakiyama 2-chome	○
17	Ueda Kita Community Center	203 Konosu 1-chome	○
18	Ueda Higashi Elementary School	1003-1 Ueda Higashi 3-chome	○
19	Otsubo Elementary School	1601 Otsubo 2-chome	2 nd floor or higher
20	Tempaku Special Support School	101 Uedayama 2-chome	○
21	Meijo University (Tempaku Campus)	501 Shiogamaguchi 1-chome	○
22	Yagoto Higashi Elementary School	1801 Otokikiyama	2 nd floor or higher
23	Omoteyama Elementary School	701 Omoteyama 2-chome	○
24	Miyukiyama Junior High School	1001 Miyukiyama	○

No.	Facility Name (Marked as □)	Address	Designated Emergency Evacuation Shelter (Flood/land flood/Landslide)
25	Omoteyama Community Center	302-2 Yagotoishizaka	○
26	Tempaku Elementary School	1109 Ikeba 2-chome	2 nd floor or higher
27	Tempaku Junior High School	1014 Ikeba 5-chome	○*1
28	Tempaku Community Center	912 Shimada 3-chome	○
29	Tempaku Lifelong Learning Center	4050 Aza kurashi Ozato shimada, Tempaku-cho	○
30	Yamane Elementary School	189 Yamane-cho	○
31	Yamane Community Center	3-24 Hitotsuyama	○
32	Shimada Community Center	117-2 Takashima 1-chome	○
33	Mitsuba Nursery School	57 One-cho	○
34	Takashima Elementary School	89 Takasaka-cho	○
35	Hisakata Junior High School	163 Hisakata 3-chome	○*2
36	Takasaka Community Center	93 Takasaka-cho	○
37	Aioi Elementary School	36 Sakaine-cho	○
38	Aioi Community Center	148 Hisakata 1-chome	○
39	Nonami Elementary School	60 Nonami 1-chome	2 nd floor or higher
40	Minami Tempaku Junior High School	101 Sasahara-cho	2 nd floor or higher
41	Nonami Community Center	391 Nonami 2-chome	○
42	Wakamiya Commercial High School	76 Furukawa-cho	3 rd floor or higher

*1 Evacuate to areas other than the southwest school building, southeast school building, and martial arts hall.
*2 Evacuate to areas other than the North school Building and the martial arts hall.

Evacuation to Designated Emergency Evacuation Shelter

○ Please evacuate to a designated emergency evacuation shelter according to the type of disaster if you are in danger (especially when evacuation information (evacuation instruction, etc.) is released) and you cannot stay at home to save your life.

○ Designated emergency evacuation shelters within flooding risk areas including collapse of buildings have been confirmed to be structurally safe.

○ Please contact the ward office in advance to confirm the place you are going is safe if you intend to evacuate on your own command.

Nagoya City Disaster Countermeasures Office /Tempaku Ward Headquarters (Tempaku Ward Office)
Tel: 803-1111 (Main) 807-3811~5 (Direct) Fax: 801-0826

Public Office (Marked as □)	Legend
A Tempaku Ward Office	0 Designated Emergency Evacuation Shelter
B Tempaku Fire Station	Underpass
C Tempaku Fire Station Shimada Branch	Landslide Disaster (Special) Warning Zone
D Tempaku Fire Station Ueda Branch	Ward boundary
E Tempaku Public Works Office	School district boundary
	Designated Emergency Evacuation Shelter outside the ward

We used the basic urban planning maps used between 2020 and 2021 to create this map. Corrections were made accordingly.
We used the urban planning maps of the following places with their consent: Nisshin.
(Approval number - Nisshin City: 7日都445)
Landslide Disaster Hazard Map, Aichi Prefecture, Creative Commons License Attribution 2.1 Japan
(<http://creativecommons.org/licenses/by/2.1/jp/>)

