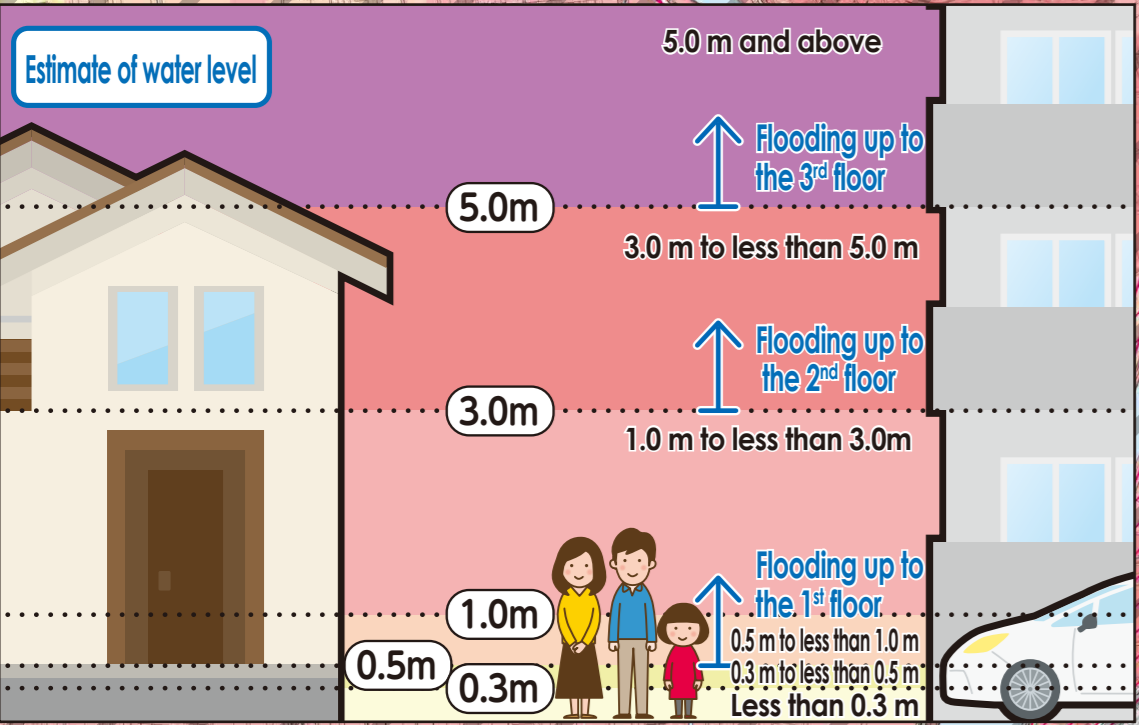
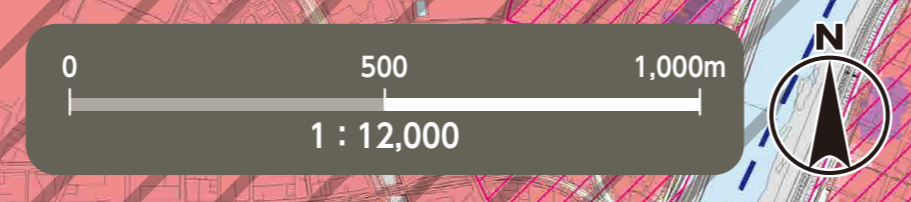


Flood Hazard Map Nakamura Ward

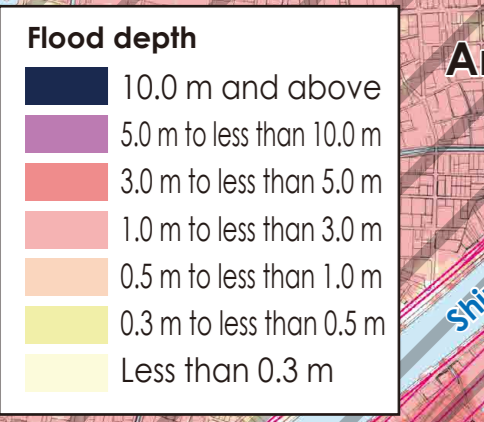
As of August, 2025



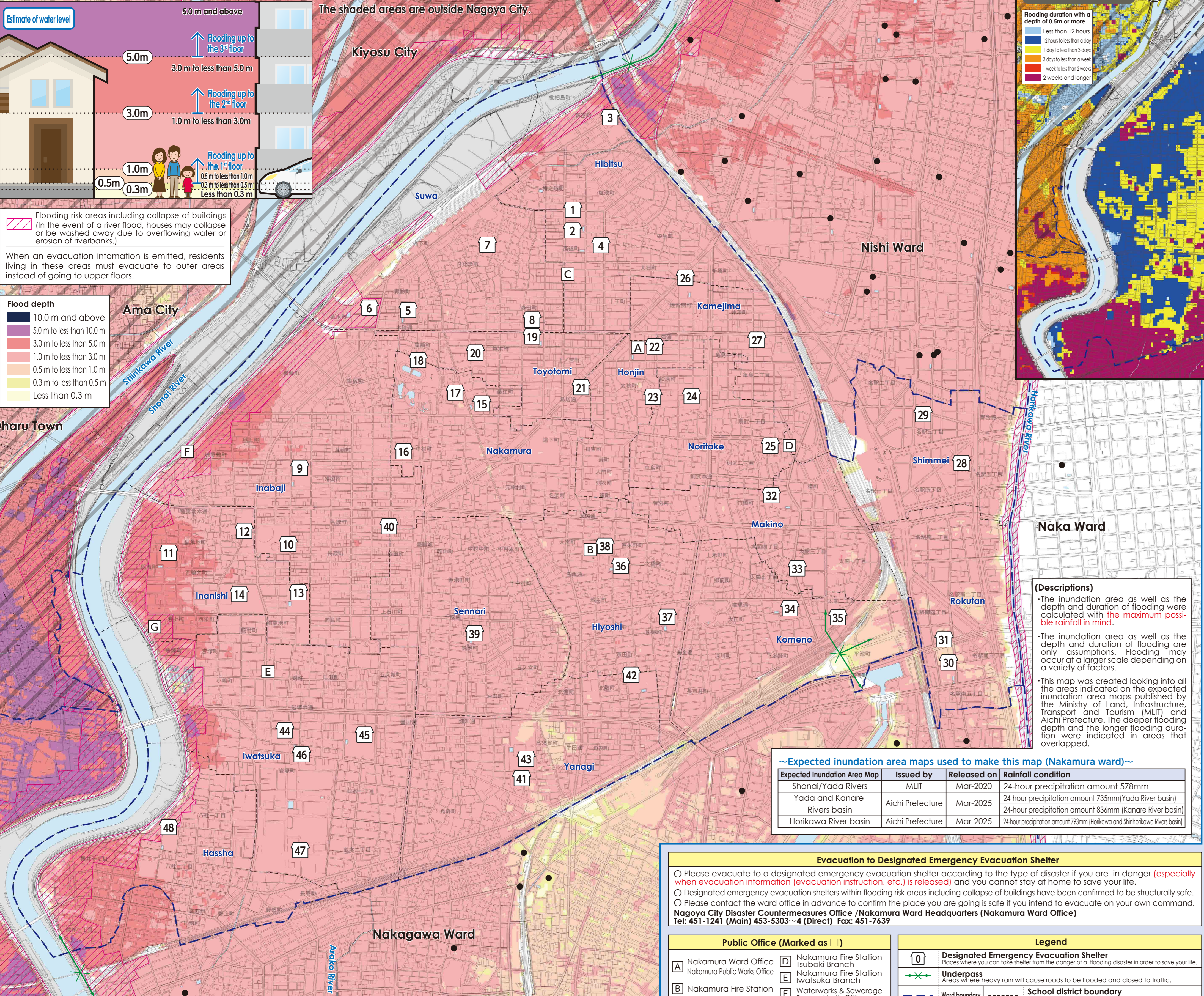
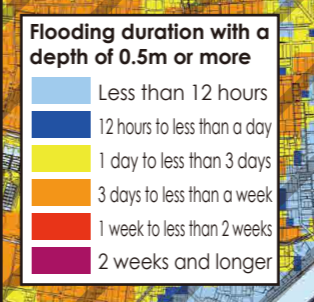
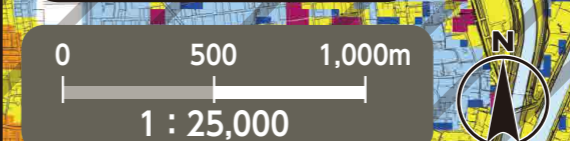
The shaded areas are outside Nagoya City.

Flooding risk areas including collapse of buildings
(In the event of a river flood, houses may collapse or be washed away due to overflowing water or erosion of riverbanks.)

When an evacuation information is emitted, residents living in these areas must evacuate to outer areas instead of going to upper floors.



duration of flooding Map



(Descriptions)

- The inundation area as well as the depth and duration of flooding were calculated with the **maximum possible rainfall** in mind.
- The inundation area as well as the depth and duration of flooding are only assumptions. Flooding may occur at a larger scale depending on a variety of factors.
- This map was created looking into all the areas indicated on the expected inundation area maps published by the Ministry of Land, Infrastructure, Transport and Tourism (MLIT) and Aichi Prefecture. The deeper flooding depth and the longer flooding duration were indicated in areas that overlapped.

~Expected inundation area maps used to make this map (Nakamura ward)~

Expected Inundation Area Map	Issued by	Released on	Rainfall condition
Shonai/Yada Rivers	MLIT	Mar-2020	24-hour precipitation amount 578mm
Yada and Kanare Rivers basin	Aichi Prefecture	Mar-2025	24-hour precipitation amount 735mm (Yada River basin) 24-hour precipitation amount 836mm (Kanare River basin)
Horikawa River basin	Aichi Prefecture	Mar-2025	24-hour precipitation amount 793mm (Horikawa and Shinhorikawa Rivers basin)

Evacuation to Designated Emergency Evacuation Shelter

- Please evacuate to a designated emergency evacuation shelter according to the type of disaster if you are in danger (especially when evacuation information (evacuation instruction, etc.) is released) and you cannot stay at home to save your life.
- Designated emergency evacuation shelters within flooding risk areas including collapse of buildings have been confirmed to be structurally safe.
- Please contact the ward office in advance to confirm the place you are going is safe if you intend to evacuate on your own command.

Nagoya City Disaster Countermeasures Office / Nakamura Ward Headquarters (Nakamura Ward Office)
Tel: 451-1241 (Main) 453-5303~4 (Direct) Fax: 451-7639

Public Office (Marked as □)

A Nakamura Ward Office	D Nakamura Fire Station Tsubaki Branch
B Nakamura Fire Station	E Nakamura Fire Station Iwatsuka Branch
C Nakamura Fire Station Hibitsu Branch	F Waterworks & Sewerage Bureau North Office
	G Waterworks & Sewerage Bureau North Water Distribution & Sewer Maintenance Center

Legend

□	Designated Emergency Evacuation Shelter
○	Places where you can take shelter from the danger of a flooding disaster in order to save your life.
—X—	Underpass
—	Areas where heavy rain will cause roads to be flooded and closed to traffic.
---	Ward boundary
---	School district boundary
●	Designated Emergency Evacuation Shelter outside the ward

*Please refer to the hazard maps of other wards to verify whether if their designated emergency evacuation shelters are open to our residents. Hazard Maps of all the wards are available on the official website of Nagoya City.

No.	Facility Name (Marked as □)	Address	Designated Emergency Evacuation Shelter
1	Hibitsu Elementary School	2-1-30 Takamichi-cho	2 nd floor or higher
2	Hibitsu Junior High School	2-2-36 Takamichi-cho	2 nd floor or higher
3	Meijo University Senior High School	1-3-16 Shintomi-cho	2 nd floor or higher
4	Hibitsu Community Center	1-6-3 Takamichi-cho	2 nd floor or higher
5	Suwa Elementary School	2-6-7 Suwa-cho	2 nd floor or higher
6	Prefectural Nakamura Senior High School	1-2-18 Kikusui-cho	2 nd floor or higher
7	Suwa Community Center	1-16-14 Hibitsu-cho	2 nd floor or higher
8	Daiei Sangyo Kaisha, Ltd.	4-18 Honjin-tori	2 nd floor or higher
9	Inabaji Elementary School	3-20 Yasukuni-cho	2 nd floor or higher
10	Inabaji Community Center	1-47 Inabaji-cho	2 nd floor or higher
11	Inanishi Elementary School	88 Inanishi-cho	2 nd floor or higher
12	Inanishi Community Center	2-16-5 Inabaji-cho	2 nd floor or higher
13	Hosei Junior High School	7-1-2 Inabaji-cho	2 nd floor or higher
14	Doho Gakuen	7-1 Inabaji-cho	2 nd floor or higher
15	Nakamura Elementary School	1-72 Nakamura-cho	2 nd floor or higher
16	Nakamura Community Center	7-84-2 Nakamura-cho	2 nd floor or higher
17	Nakamura Sports Center	43-1 Aza machiya, Nakamura-cho	2 nd floor or higher
18	Nagoya Keirin	68 Aza takabata, Nakamura-cho	2 nd floor or higher
19	Toyotomi Elementary School	2-1 Morisue-cho	2 nd floor or higher
20	Toyotomi Community Center	4-106 Morisue-cho	2 nd floor or higher
21	Nakamura Lifelong Learning Center	3-1-3 Torii-tori	2 nd floor or higher
22	Nakamura Ward Office Complex	1-23-1 Matsubara-cho	2 nd floor or higher
23	Honjin Community Center	4-68 Matsubara-cho	2 nd floor or higher
24	Honoka Elementary School	5-5 Matsubara-cho	2 nd floor or higher
25	Noritake Community Center	8-17 Noritake 2-chome	2 nd floor or higher
26	Oise Junior High School	5-4 Sakomae-cho	2 nd floor or higher
27	Kamejima Fureai Center	5-30-2 Kamejima 1-chome	2 nd floor or higher
28	Sasashima Elementary School/ Junior High School	19-1 Meieki 4-chome	2 nd floor or higher
29	Shimmei Community Center	17-3 Meieki 3-chome	2 nd floor or higher
30	Seisa Nagoya Junior High School	6-38 Meieki Minami 4-chome	2 nd floor or higher
31	Rokutan Community Center	4-7 Meieki Minami 4-chome	2 nd floor or higher
32	Makino Elementary School	3-4 Takebashi-cho	2 nd floor or higher
33	Makino Community Center	7-57 Taiko 3-chome	2 nd floor or higher
34	Komono Elementary School	1-28 Gongen-tori	2 nd floor or higher
35	Komono Community Center	3-11 Taiko 2-chome	2 nd floor or higher
36	Hiyoshi Elementary School	1-1 Joshu-cho	2 nd floor or higher
37	Kogane Junior High School	4-28 Gongen-tori	2 nd floor or higher
38	Hiyoshi Community Center	4-40 Nishi Komono-cho	2 nd floor or higher
39	Sennari Elementary School	1-120 Hinomiya-cho	2 nd floor or higher
40	Sennari Community Center	1-12 Sunada-cho	2 nd floor or higher
41	Yanagi Elementary School	2-25 Kasumori-cho	2 nd floor or higher
42	Toyokuni Junior High School	1-8 Kitahata-cho	2 nd floor or higher
43	Prefectural Shoin Senior High School	2-2 Karasumori-cho	2 nd floor or higher
44	Iwatsuka Elementary School	4-17-1 Iwatsuka-cho	2 nd floor or higher
45	Mita Junior High School	2-10 Iwatsuka-cho	2 nd floor or higher
46	Iwatsuka Community Center	3-192 Iwatsuka-cho	2 nd floor or higher
47	Logiport Nagoya	1-1 Takamichi, Iwatsuka-cho	2 nd floor or higher
48	Hashha Elementary School	199-2 Hashha 1-chome	2 nd floor or higher

We used the basic urban planning maps used between 2020 and 2021 to create this map. Corrections were made accordingly.
We used the urban planning maps of the following places with their consent: Kiyosu City, Ama City and Oharu Town. (Approval numbers - Kiyosu City: 7清須第319. Ama City: 7あ都132. Oharu Town: 7大都整152)