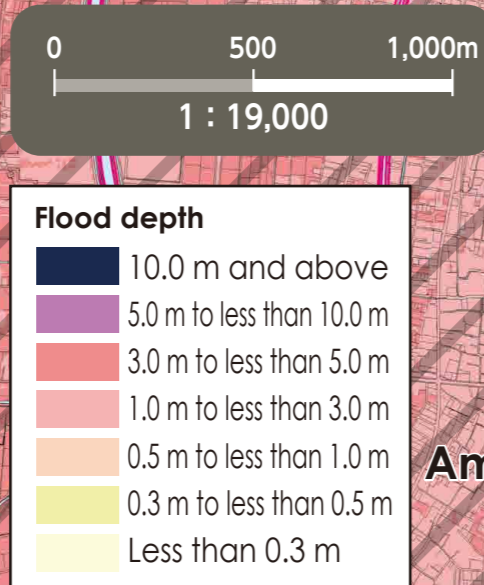
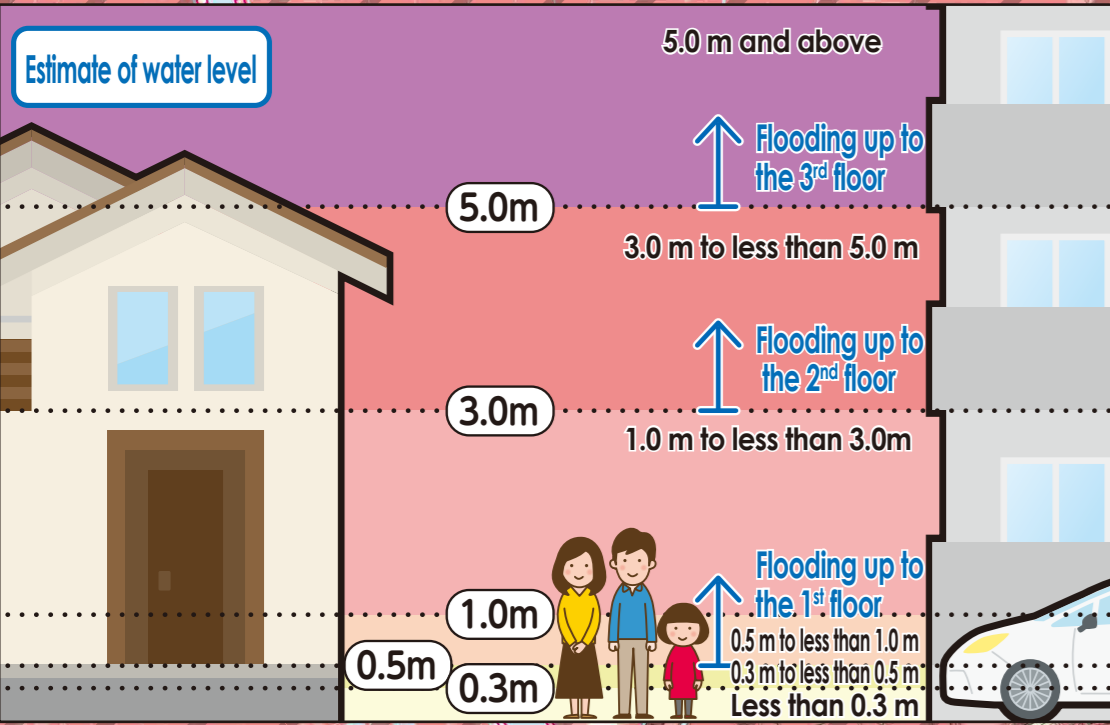


Flood Hazard Map Nakagawa Ward



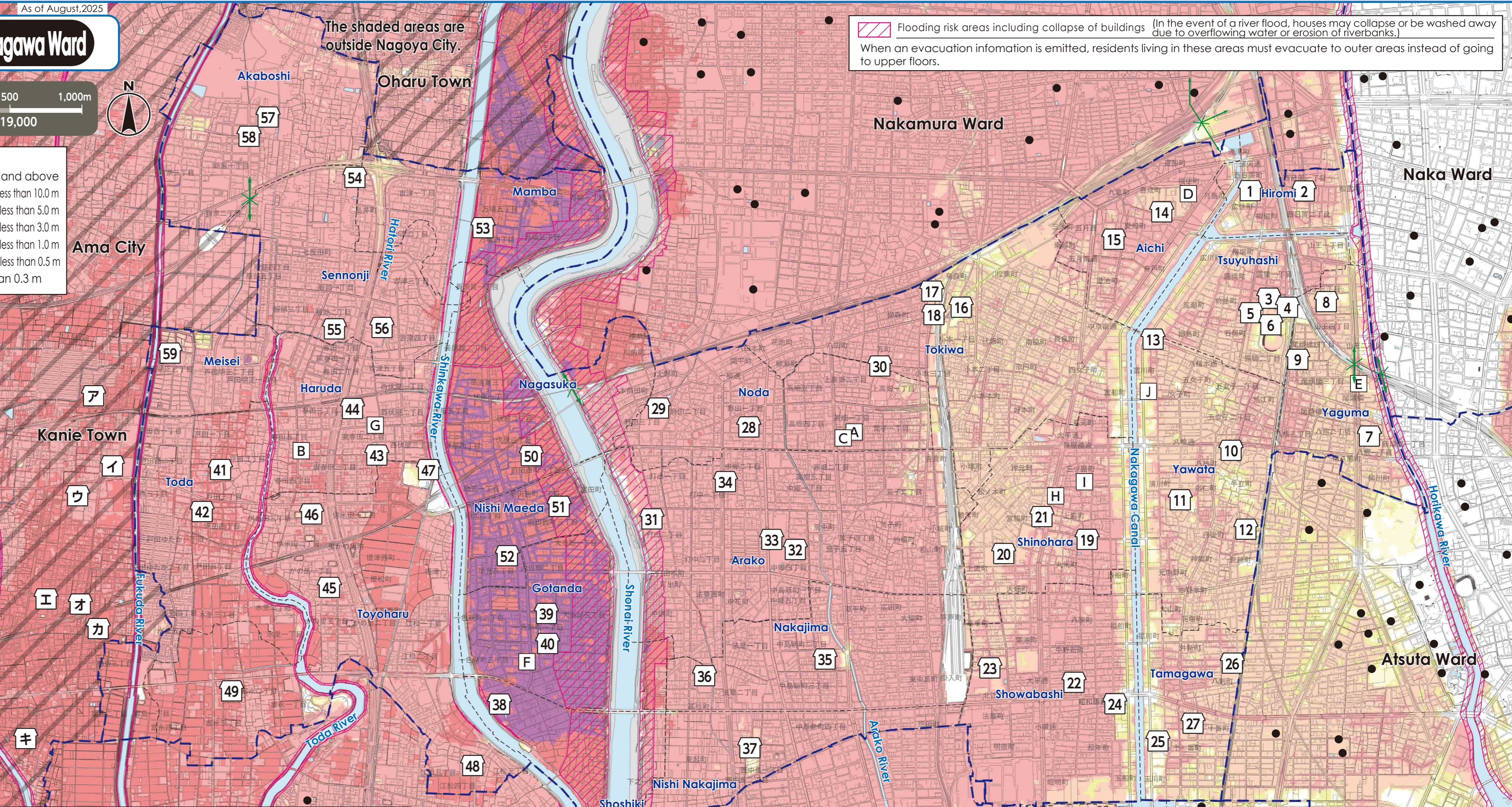
(Descriptions)

- The inundation area as well as the depth and duration of flooding were calculated with the maximum possible rainfall in mind.
- The inundation area as well as the depth and duration of flooding are only assumptions. Flooding may occur at a larger scale depending on a variety of factors.
- This map was created looking into all the areas indicated on the expected inundation area maps published by the Ministry of Land, Infrastructure, Transport and Tourism (MLIT) and Aichi Prefecture. The deeper flooding depth and the longer flooding duration were indicated in areas that overlapped.

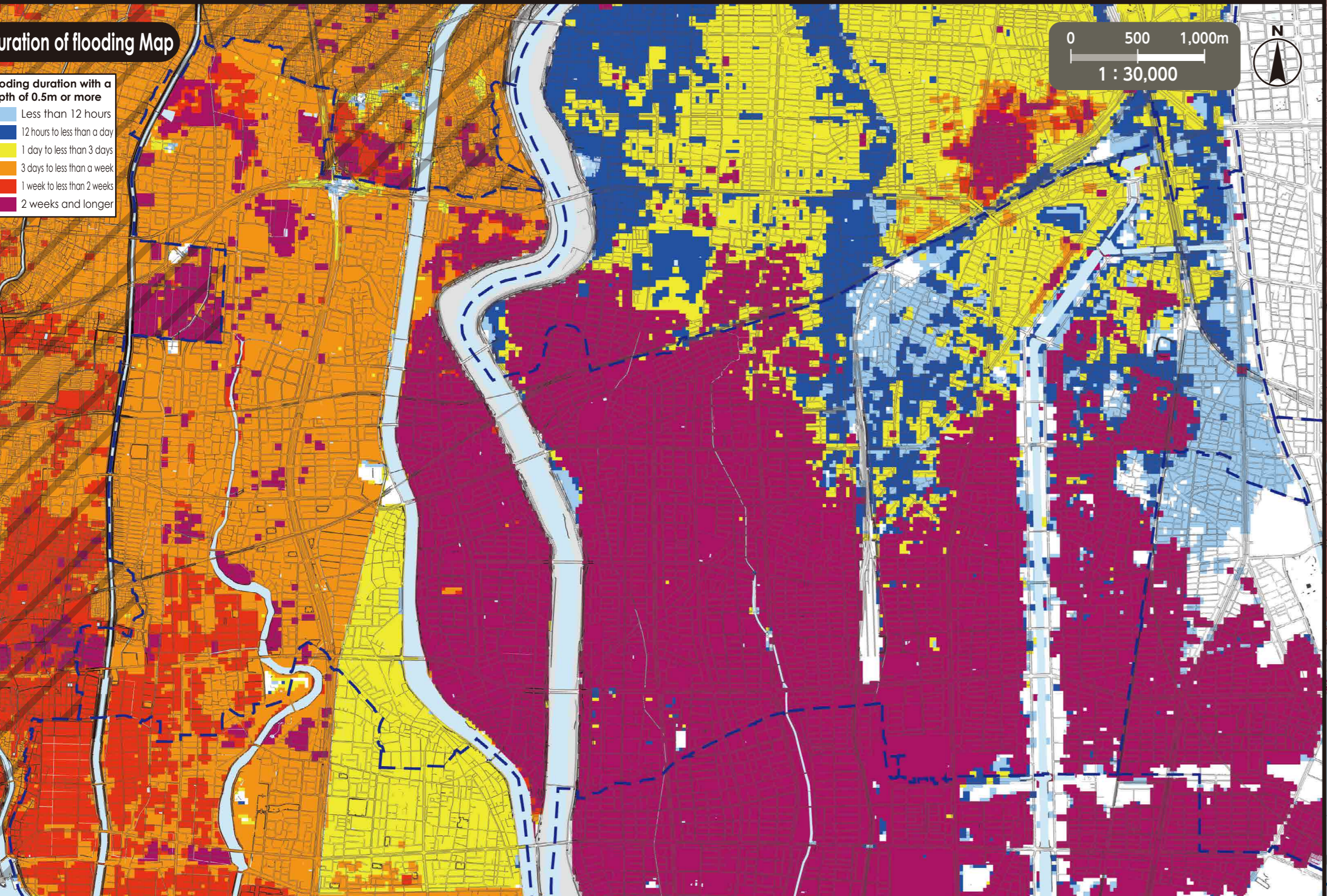
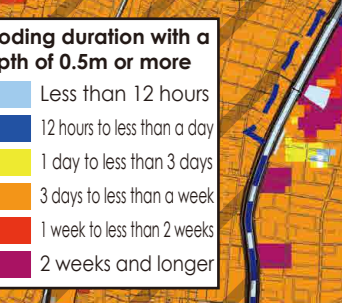
~Expected inundation area maps used to make this map (Nakagawa ward)~

Expected Inundation Area Map	Issued by	Released on	Rainfall condition
Kiso River	MLIT	Apr-2020	2-day precipitation amount 527mm
Shonai/Yada Rivers	MLIT	Mar-2020	24-hour precipitation amount 578mm
Yada and Kanare Rivers basin	Aichi Prefecture	Mar-2025	24-hour precipitation amount 735mm (Yada River basin) 24-hour precipitation amount 836mm (Kanare River basin) 24-hour precipitation amount 751mm (Shinkawa River basin)
Shinkawa River basin	Aichi Prefecture	Nov-2024	24-hour precipitation amount 736mm (Gojo River basin(downstream)) 24-hour precipitation amount 815mm (Gojo River basin(upstream)/Oyama River basin) 24-hour precipitation amount 805mm (Aoki River basin) 24-hour precipitation amount 836mm (tributary streams)
Horikawa River basin	Aichi Prefecture	Mar-2025	24-hour precipitation amount 793mm (Horikawa and Shinhorikawa Rivers basin)
Nikko River basin	Aichi Prefecture	Mar-2025	24-hour precipitation amount 713mm (Nikko River basin) 24-hour precipitation amount 836mm (tributary streams)

Flooding risk areas including collapse of buildings (In the event of a river flood, houses may collapse or be washed away due to overflowing water or erosion of riverbanks.)
When an evacuation information is emitted, residents living in these areas must evacuate to outer areas instead of going to upper floors.



duration of flooding Map



*Please refer to the hazard maps of other wards to verify whether if their designated emergency evacuation shelters are open to our residents. Hazard Maps of all the wards are available on the official website of Nagoya City.

No.	Facility Name (Marked as □)	Address	Designated Emergency Evacuation Shelter
1	Hiroimi Elementary School	4-41 Hirosumi-cho	2nd floor or higher
2	Hiroimi Community Center	16-1 Nishi Hioki 2-chome	2nd floor or higher
3	Tsuyuhashi Elementary School	9-41 Tsuyuhashi 1-chome	2nd floor or higher
4	Tsuyuhashi Community Center	13-1 Tsuyuhashi 2-chome	○
5	Tsuyuhashi Sports Center	14-1 Tsuyuhashi 2-chome	2nd floor or higher
6	Nagoya Stadium	12-1 Tsuyuhashi 2-chome	2nd floor or higher
7	Yaguma Elementary School	8-30 Yaguma 1-chome	2nd floor or higher
8	Sanno Junior High School	7-3 Sanno 3-chome	2nd floor or higher
9	Yaguma Community Center	5-24 Otobashi 4-chome	2nd floor or higher
10	Yawata Elementary School	5-4 Yaguma-dori	2nd floor or higher
11	Yawata Junior High School	2-11 Motonakano-cho	2nd floor or higher
12	Yawata Community Center	1-1-3 Arokoshi-cho	2nd floor or higher
13	Nakagawa Lifelong Learning Center	1-2-12 Tomikawa-cho	2nd floor or higher
14	Aichi Elementary School	1-35 Hoshi-cho	2nd floor or higher
15	Aichi Community Center	33-3 Aichi-cho	2nd floor or higher
16	Tokiwa Elementary School	15-2 Komato 1-chome	2nd floor or higher
17	Nishi Special Support School	19-38 Komato 1-chome	2nd floor or higher
18	Tokiwa Community Center	20-52 Komato 1-chome	2nd floor or higher
19	Shinohara Elementary School	1-55 Marukome-cho	2nd floor or higher
20	Nagara Junior High School	1-3-1 Ohata-cho	2nd floor or higher
21	Shinohara Community Center	3-10 Taihei-tori	2nd floor or higher
22	Showabashi Elementary School	7-51-1 Nakano-shincho	2nd floor or higher
23	Technical High School	3-13 Kitae-cho	2nd floor or higher
24	Showabashi Community Center	1-1 Tamane-cho 1-chome	2nd floor or higher
25	Tamagawa Elementary School	2-1 Tamakawa-cho	2nd floor or higher

No.	Facility Name (Marked as □)	Address	Designated Emergency Evacuation Shelter
26	Showabashi Junior High School	1-9 Hachiken-cho	2nd floor or higher
27	Tamagawa Community Center	3-1 Juichiban-cho	2nd floor or higher
28	Noda Elementary School	545 Noda 1-chome	2nd floor or higher
29	Prefectural Nakagawa Seiya High School	280 Noda 3-chome	3rd floor or higher
30	Noda Community Center	179-2 Kamitakabata 1-chome	2nd floor or higher
31	Seiseikai Medical Corporation Matsugae Hospital (Central Ward)	70 Uchide 2-chome	2nd floor or higher
32	Arako Elementary School	234 Chuga 4-chome	2nd floor or higher
33	Ichiyanagi Junior High School	235 Chuga 4-chome	2nd floor or higher
34	Arako Community Center	164 Chuga 2-chome	2nd floor or higher
35	Nakajima Elementary School	401 Nakajima-shincho 2-chome	2nd floor or higher
36	Takasugi Junior High School	133 Takasugi-cho	2nd floor or higher
37	Nishi Nakajima Elementary School	301 Nishi Nakajima 2-chome	2nd floor or higher
38	Shoshiki Elementary School	107 Gonna, Shimonoi-shiki-cho	3rd floor or higher
39	Gotanda Elementary School	601 Ishiki-shimmachi 1-chome	3rd floor or higher
40	Ishiki Junior High School	701 Ishiki-shimmachi 1-chome	3rd floor or higher
41	Toda Elementary School	2114 Toda 2-chome	2nd floor or higher
42	Tomida District Hall	2502 Toda 4-chome	2nd floor or higher
43	Haruda Elementary School	243 Higashi Haruta 2-chome	2nd floor or higher
44	Tomida Junior High School	72 Higashi Haruta 2-chome	2nd floor or higher
45	Toyoharu Elementary School	2501 Kanosato 1-chome	2nd floor or higher
46	Kumaiden Junior High School	802 Kumaiden 2-chome	2nd floor or higher

Evacuation to Designated Emergency Evacuation Shelter

- Please evacuate to a designated emergency evacuation shelter according to the type of disaster if you are in danger (especially when evacuation information (evacuation instruction, etc.) is released) and you cannot stay at home to save your life.
- Designated emergency evacuation shelters within flooding risk areas including collapse of buildings have been confirmed to be structurally safe.
- Please contact the ward office in advance to confirm the place you are going is safe if you intend to evacuate on your own command.

Nagoya City Disaster Countermeasures Office /Nakagawa Ward Headquarters (Nakagawa Ward Office) Tel: 362-1111 (Main) 363-4306~9 (Direct) Fax: 362-6562

Public Office (Marked as □)		Legend	
A	Nakagawa Ward Office	0	Designated Emergency Evacuation Shelter
B	Nakagawa Ward Office Tomida Branch	+	Places where you can take shelter from the danger of a flooding disaster in order to save your life.
C	Nakagawa Fire Station	+	Underpass
D	Nakagawa Fire Station Hioki Branch	+	Areas where heavy rain will cause roads to be flooded and closed to traffic.
E	Nakagawa Fire Station Otobashi Branch	---	Ward boundary
F	Nakagawa Fire Station Shimonoi-shiki Branch	---	School district boundary
G	Nakagawa Fire Station Tomida Branch	○	School districts are approximate. Please contact the respective ward office for further information.
H	Emergency Task Forces 1	●	Designated Emergency Evacuation Shelter outside the ward
I	Nakagawa Public Works Office		
J	Waterworks & Sewerage Bureau West Office		

We used the urban planning maps of the following places with their consent: Ama City, Oharu Town, Kanie Town and Aisai City. (Approval numbers - Ama City: 7あ都132, Oharu Town: 7大都152, Kanie Town: 7蟹まち取41, Aisai City: 3愛西都774)