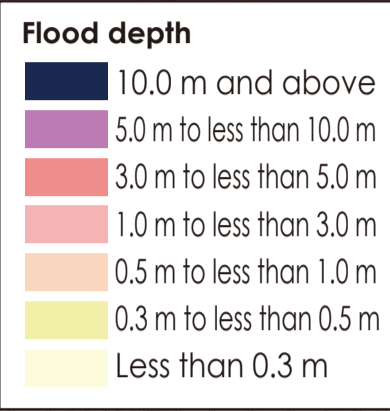
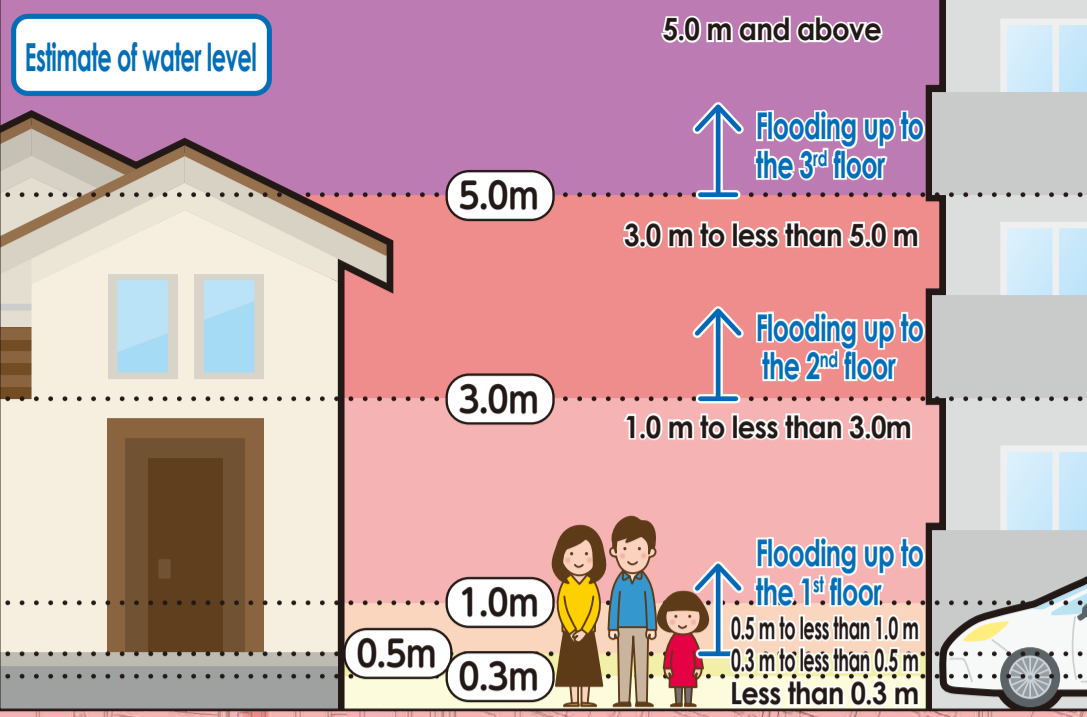
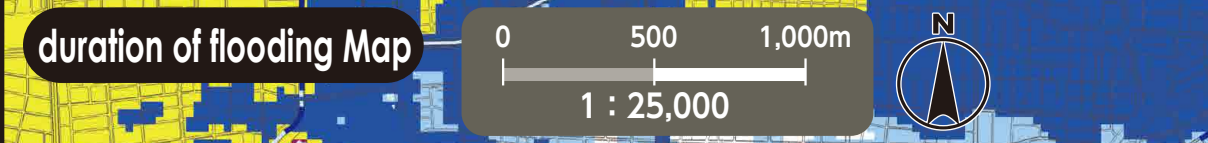
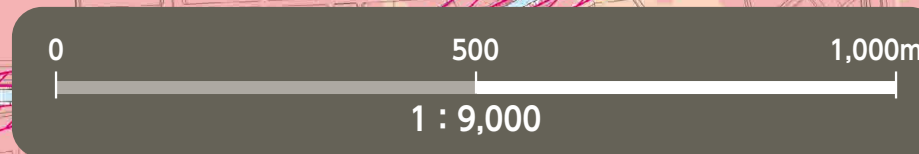
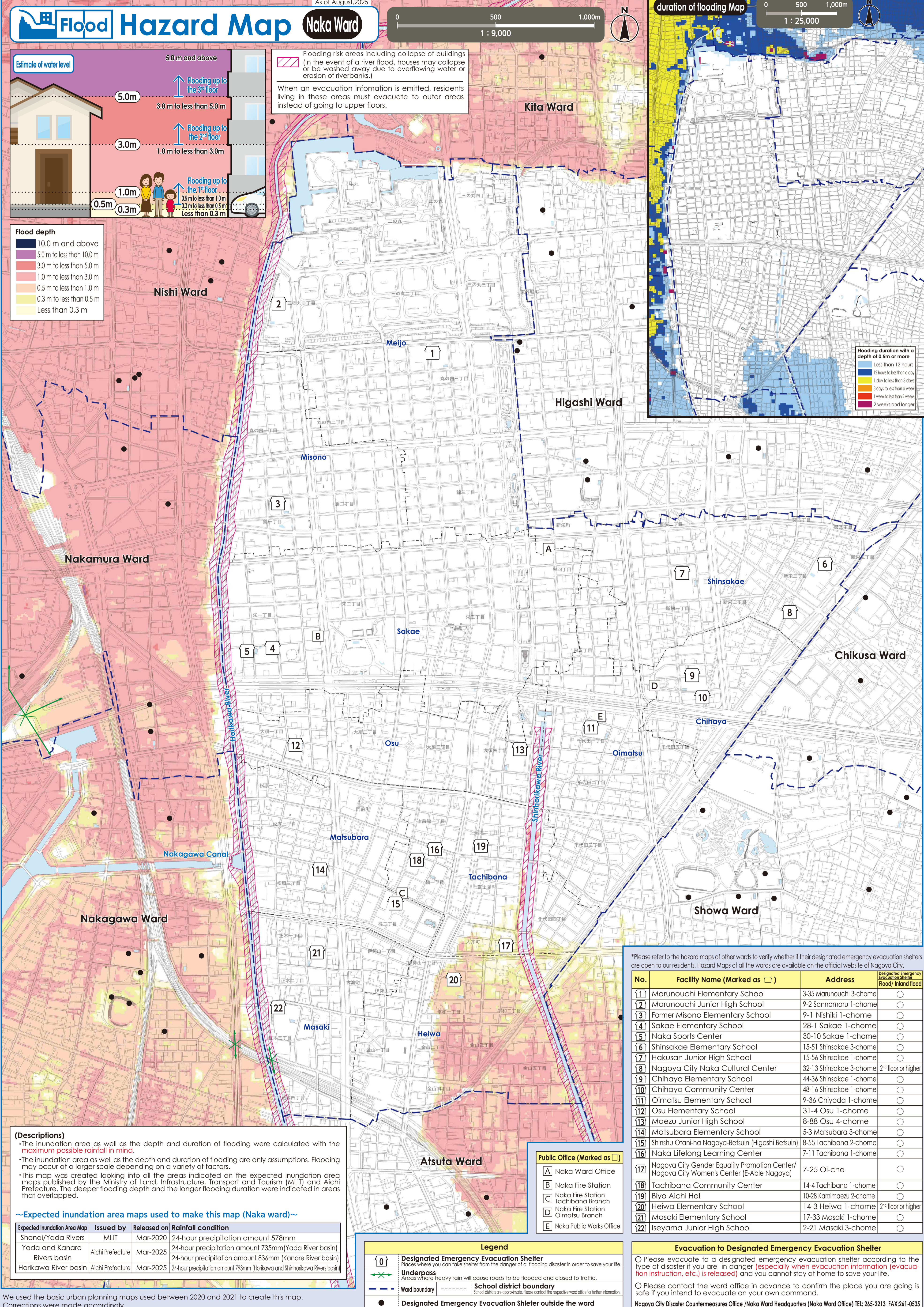


Flood Hazard Map Naka Ward



Flooding risk areas including collapse of buildings (In the event of a river flood, houses may collapse or be washed away due to overflowing water or erosion of riverbanks.)
When an evacuation information is emitted, residents living in these areas must evacuate to outer areas instead of going to upper floors.



(Descriptions)
 • The inundation area as well as the depth and duration of flooding were calculated with the maximum possible rainfall in mind.
 • The inundation area as well as the depth and duration of flooding are only assumptions. Flooding may occur at a larger scale depending on a variety of factors.
 • This map was created looking into all the areas indicated on the expected inundation area maps published by the Ministry of Land, Infrastructure, Transport and Tourism (MLIT) and Aichi Prefecture. The deeper flooding depth and the longer flooding duration were indicated in areas that overlapped.

~Expected inundation area maps used to make this map (Naka ward)~

Expected Inundation Area Map	Issued by	Released on	Rainfall condition
Shonai/Yada Rivers	MLIT	Mar-2020	24-hour precipitation amount 578mm
Yada and Kanare Rivers basin	Aichi Prefecture	Mar-2025	24-hour precipitation amount 735mm (Yada River basin)
Horikawa River basin	Aichi Prefecture	Mar-2025	24-hour precipitation amount 836mm (Kanare River basin)
			24-hour precipitation amount 793mm (Horikawa and Shinhorikawa Rivers basin)

- Public Office (Marked as □)**
- A Naka Ward Office
 - B Naka Fire Station
 - C Naka Fire Station Tachibana Branch
 - D Naka Fire Station Oimatsu Branch
 - E Naka Public Works Office

- Legend**
- 0 Designated Emergency Evacuation Shelter
Places where you can take shelter from the danger of a flooding disaster in order to save your life.
 - Underpass
Areas where heavy rain will cause roads to be flooded and closed to traffic.
 - Ward boundary
 - School district boundary
School districts are approximate. Please contact the respective ward office for further information.
 - Designated Emergency Evacuation Shelter outside the ward

*Please refer to the hazard maps of other wards to verify whether if their designated emergency evacuation shelters are open to our residents. Hazard Maps of all the wards are available on the official website of Nagoya City.

No.	Facility Name (Marked as □)	Address	Designated Emergency Evacuation Shelter (Flood/ Inland flood)
1	Marunouchi Elementary School	3-35 Marunouchi 3-chome	○
2	Marunouchi Junior High School	9-2 Sannomaru 1-chome	○
3	Former Misono Elementary School	9-1 Nishiki 1-chome	○
4	Sakae Elementary School	28-1 Sakae 1-chome	○
5	Naka Sports Center	30-10 Sakae 1-chome	○
6	Shinsakae Elementary School	15-51 Shinsakae 3-chome	○
7	Hakusan Junior High School	15-56 Shinsakae 1-chome	○
8	Nagoya City Naka Cultural Center	32-13 Shinsakae 3-chome	2 nd floor or higher
9	Chihaya Elementary School	44-36 Shinsakae 1-chome	○
10	Chihaya Community Center	48-16 Shinsakae 1-chome	○
11	Oimatsu Elementary School	9-36 Chiyoda 1-chome	○
12	Osu Elementary School	31-4 Osu 1-chome	○
13	Maezu Junior High School	8-88 Osu 4-chome	○
14	Matsubara Elementary School	5-3 Matsubara 3-chome	○
15	Shinshu Otani-ha Nagoya-Betsuin (Higashi Betsuin)	8-55 Tachibana 2-chome	○
16	Naka Lifelong Learning Center	7-11 Tachibana 1-chome	○
17	Nagoya City Gender Equality Promotion Center/ Nagoya City Women's Center (E-Able Nagoya)	7-25 Oi-cho	○
18	Tachibana Community Center	14-4 Tachibana 1-chome	○
19	Biyo Aichi Hall	10-28 Kamimaezu 2-chome	○
20	Heiwa Elementary School	14-3 Heiwa 1-chome	2 nd floor or higher
21	Masaki Elementary School	17-33 Masaki 1-chome	○
22	Iseyama Junior High School	2-21 Masaki 3-chome	○

Evacuation to Designated Emergency Evacuation Shelter
 ○ Please evacuate to a designated emergency evacuation shelter according to the type of disaster if you are in danger (especially when evacuation information (evacuation instruction, etc.) is released) and you cannot stay at home to save your life.
 ○ Please contact the ward office in advance to confirm the place you are going is safe if you intend to evacuate on your own command.
 Nagoya City Disaster Countermeasures Office / Naka Ward Headquarters (Naka Ward Office) TEL: 265-2213 FAX: 261-0535

We used the basic urban planning maps used between 2020 and 2021 to create this map. Corrections were made accordingly.