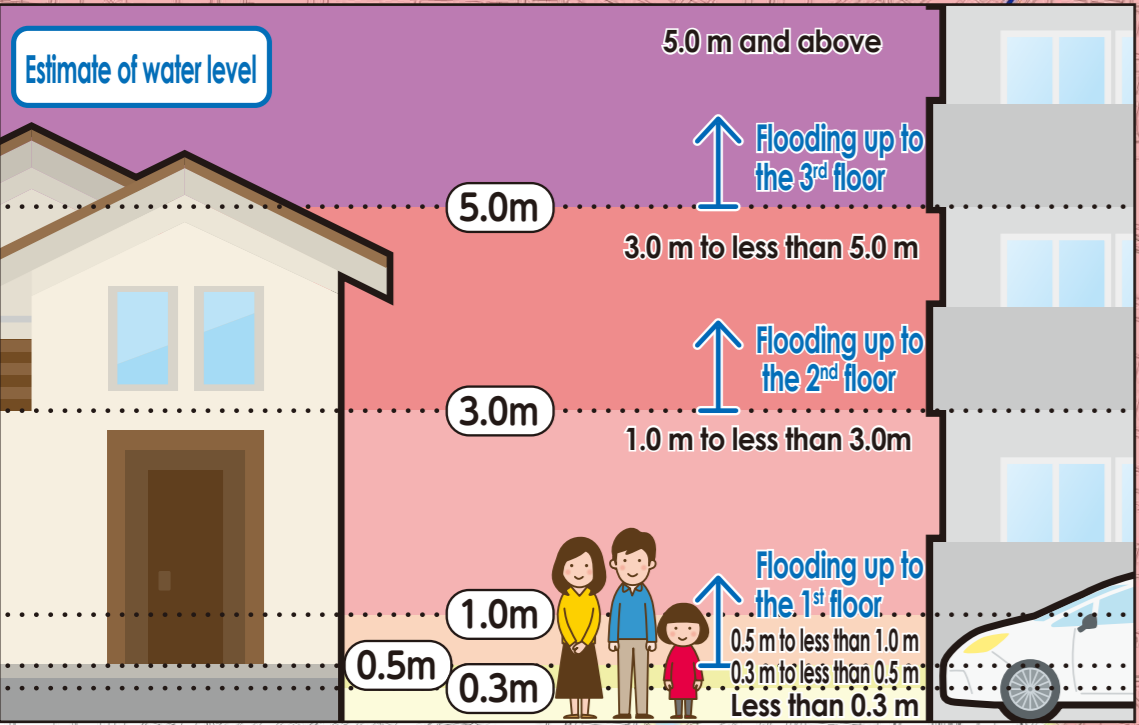
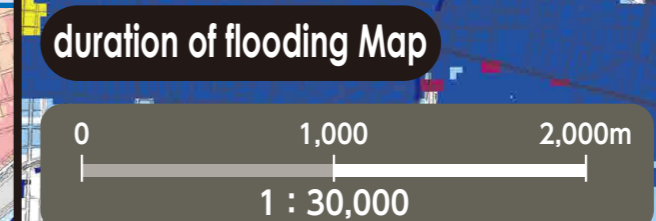
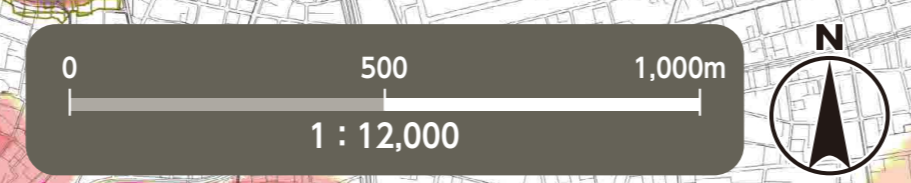


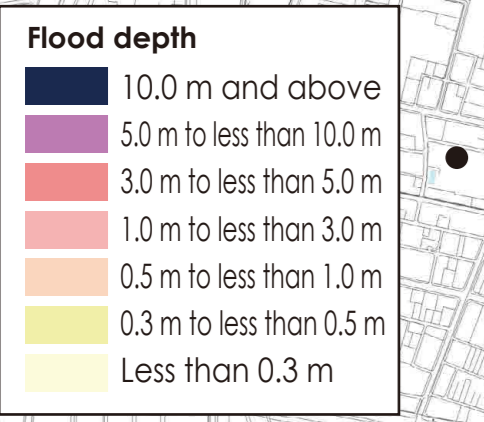
# Flood Hazard Map Chikusa Ward

As of August, 2025



**Flooding risk areas including collapse of buildings**  
(In the event of a river flood, houses may collapse or be washed away due to overflowing water or erosion of riverbanks.)

When an evacuation information is emitted, residents living in these areas must evacuate to outer areas instead of going to upper floors.



### (Descriptions)

- The inundation area as well as the depth and duration of flooding were calculated with the **maximum possible rainfall in mind**.
- The inundation area as well as the depth and duration of flooding are only assumptions. Flooding may occur at a larger scale depending on a variety of factors.
- This map was created looking into all the areas indicated on the expected inundation area maps published by the Ministry of Land, Infrastructure, Transport and Tourism (MLIT) and Aichi Prefecture. The deeper flooding depth and the longer flooding duration were indicated in areas that overlapped.

~Expected inundation area maps/ used to make this map (Chikusa Ward)~

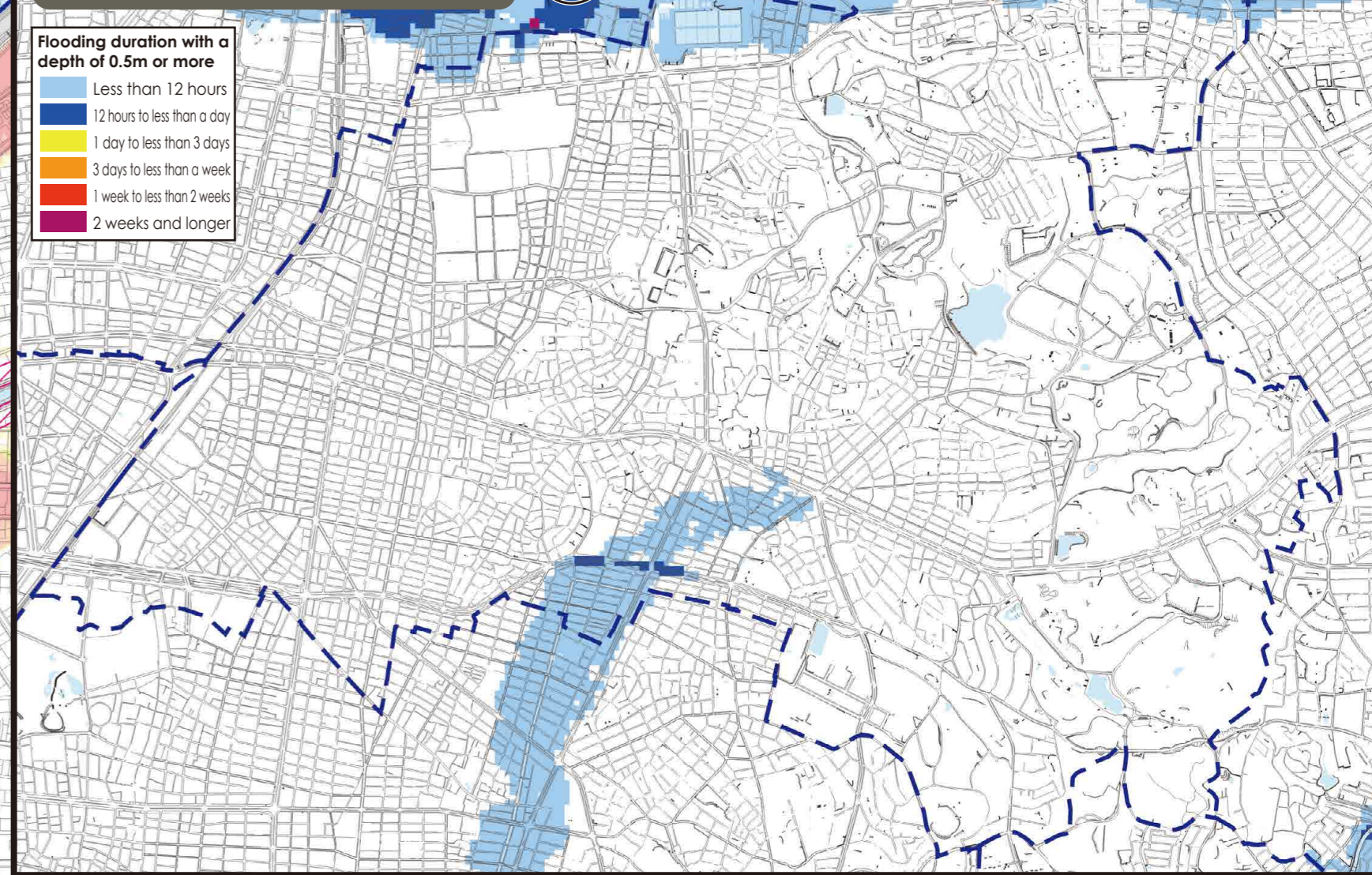
Expected Inundation Area Map	Issued by	Released on	Rainfall condition
Yada River	MLIT	Mar-2020	24-hour precipitation amount 578mm
Yada and Kanare Rivers basin	Aichi Prefecture	Mar-2025	24-hour precipitation amount 735mm(Yada River basin)
Yamazaki Rivers basin	Aichi Prefecture	Mar-2025	24-hour precipitation amount 836mm(Kanare River basin)
			24-hour precipitation amount 836mm

### Public Office (Marked as □)

<b>A</b> Chikusa Ward Office (Temporary Building)	<b>E</b> Chikusa Fire Station Fukiage Branch
<b>B</b> Chikusa Fire Station	<b>F</b> Chikusa Public Works Office
<b>C</b> Chikusa Fire Station Kakuzan Branch	<b>G</b> Waterworks & Sewerage Bureau East Office
<b>D</b> Chikusa Fire Station Higashiyama Branch	<b>H</b> Waterworks & Sewerage Bureau East Water Distribution & Sewer Maintenance Center

### Legend

Designated Emergency Evacuation Shelter Places where you can take shelter from the danger of a flooding disaster in order to save your life.	Ward boundary
Underpass Areas where heavy rain will cause roads to be flooded and closed to traffic.	School district boundary School districts are approximate. Please contact the respective ward office for further information.
Landslide Disaster (Special) Warning Zone Areas where landslides may occur.	Designated Emergency Evacuation Shelter outside the ward



\*Please refer to the hazard maps of other wards to verify whether if their designated emergency evacuation shelters are open to our residents. Hazard Maps of all the wards are available on the official website of Nagoya City.

No.	Facility Name (Marked as □)	Address	Designated Emergency Evacuation Shelter Flood/ Inland flood/Landslide
1	Chikusa Elementary School	2-5 Chikusa 3-chome	○
2	Imaie Junior High School	19-1 Imaie 3-chome	2nd floor or higher
3	Chikusa Community Center *	2-11 Chikusa 3-chome	○
4	Sengoku Elementary School	1-52 Chikusa 1-chome	2nd floor or higher
5	Sengoku Community Center	6-16 Chikusa 2-chome	○
6	Nagoya Institute of Technology (gymnasium)	7-2 Fukiage 1-chome	○
7	Miyako Elementary School	4-15 Uchiyama 1-chome	○
8	Uchiyama Community Center	4-15 Uchiyama 1-chome	○
9	Taiwa Elementary School	4-9 Shoken 1-chome	○
10	Shimpo Junior High School	7-1 Kita Chikusa 1-chome	○
11	Taiwa Community Center	12-3 Shoken 2-chome	○
12	Ueno Elementary School	6-1 Ueno 2-chome	○
13	Aichi Institute of Technology Meiden High School Mizuwaka Sports Center (gymnasium)	5-32 Kita Chikusa 2-chome	○
14	Nagoya City University Kitachikusa Campus	1-10 Kita Chikusa 2-chome	○
15	Ueno Community Center	10-17 Ueno 1-chome	○
16	Takami Elementary School	7-1 Takami 1-chome	○
17	Wakamizu Junior High School	6-1 Wakamizu 2-chome	○
18	Chikusa Lifelong Learning Center	3-34 Shimpo-cho	○
19	Takami Community Center	21-11 Wakamizu 3-chome	○
20	Haruoka Elementary School	5-38 Haruoka 2-chome	○
21	Haruoka Community Center	5-44 Haruoka 2-chome	○
22	Tashiro Elementary School	2-41 Kangetsu-cho	○
23	Shiroyama Junior High School	1-42 Nishizaki-cho	2nd floor or higher
24	Tashiro Community Center	2-14 Kangetsu-cho	○
25	Higashiyama Elementary School	3-20 Hashimoto-cho	2nd floor or higher
26	Higashiyama Community Center	2-37 Hashimoto-cho	○
27	Mitsuke Elementary School	3-1-3 Mitsuke-cho	○
28	Mitsuke Community Center	1-79-1 Karayama-cho	○
29	Hoshigaoka Elementary School	1-4 Hoshigaoka	○
30	Tosei Junior High School	105 Hoshigaoka-yamate	○
31	Kikuzato Senior High School	13-7 Hoshigaoka-motomachi	○
32	Aichi Shukutoku Junior & Senior Highschool	23 Sakuragaoka	○
33	Chikusa Sports Center	121 Hoshigaoka-yamate	○
34	Hoshigaoka Community Center	1-3 Hoshigaoka	○
35	Jiyugaoka Elementary School	2-15-24 Jiyugaoka	○
36	Chikusadai Junior High School	3-3-55 Jiyugaoka	○
37	Nagoya City Nagoya Commercial High School	2-11-48 Jiyugaoka	○
38	Jiyugaoka Meeting Hall	5-3-12-1 Tokugawayama-cho	○
39	Fujimidai Elementary School	2-1 Fujimidai	○
40	Aichi Prefectural Nagoya School for the Deaf	21-1 Kanokoden	○
41	Fujimidai Meeting Hall	2-3-49 Kibogaoka	○
42	Miyane Elementary School	10-19 Miyanedai 2-chome	○
43	Inokoishi Junior High School	2-5 Chiyogaoka	○
44	Chiyodabashi Elementary School	3-7 Chiyodabashi 2-chome	○
45	Chikusa Junior High School	1-12 Chiyodabashi 1-chome	2nd floor or higher

\*Unavailable from July 2026 to around March 2027.

### Evacuation to Designated Emergency Evacuation Shelter

- Please evacuate to a designated emergency evacuation shelter according to the type of disaster if you are in danger (especially when evacuation information (evacuation instruction, etc.) is released) and you cannot stay at home to save your life.
- Designated emergency evacuation shelters within flooding risk areas including collapse of buildings have been confirmed to be structurally safe.
- Please contact the ward office in advance to confirm the place you are going is safe if you intend to evacuate on your own command.

**Nagoya City Disaster Countermeasures Office /Chikusa Ward Headquarters (Chikusa Ward Office)**  
Tel: 762-3111 (Main) 753-1811 (Direct) Fax: 762-5044

We used the basic urban planning maps used between 2020 and 2021 to create this map. Corrections were made accordingly. Landslide Disaster Hazard Map, Aichi Prefecture, Creative Commons License Attribution 2.1 Japan (<http://creativecommons.org/licenses/by/2.1/jp/>)