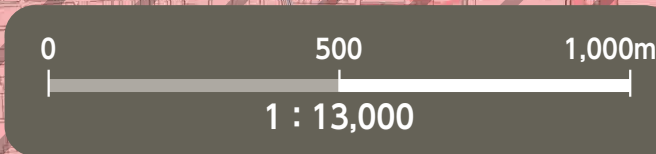
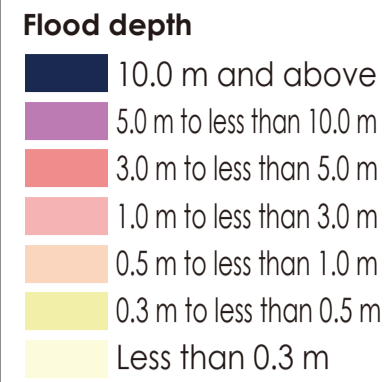


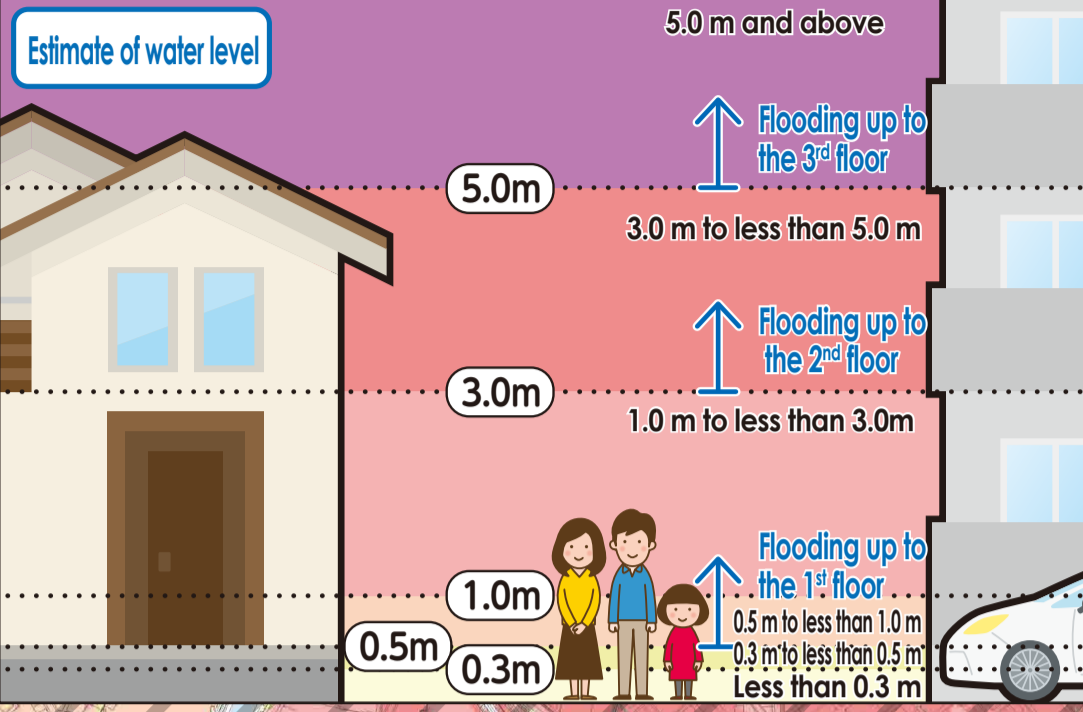
Flood Hazard Map Nishi Ward



The shaded areas are outside Nagoya City.



Flooding risk areas including collapse of buildings
(In the event of a river flood, houses may collapse or be washed away due to overflowing water or erosion of riverbanks.)
When an evacuation information is emitted, residents living in these areas must evacuate to outer areas instead of going to upper floors.

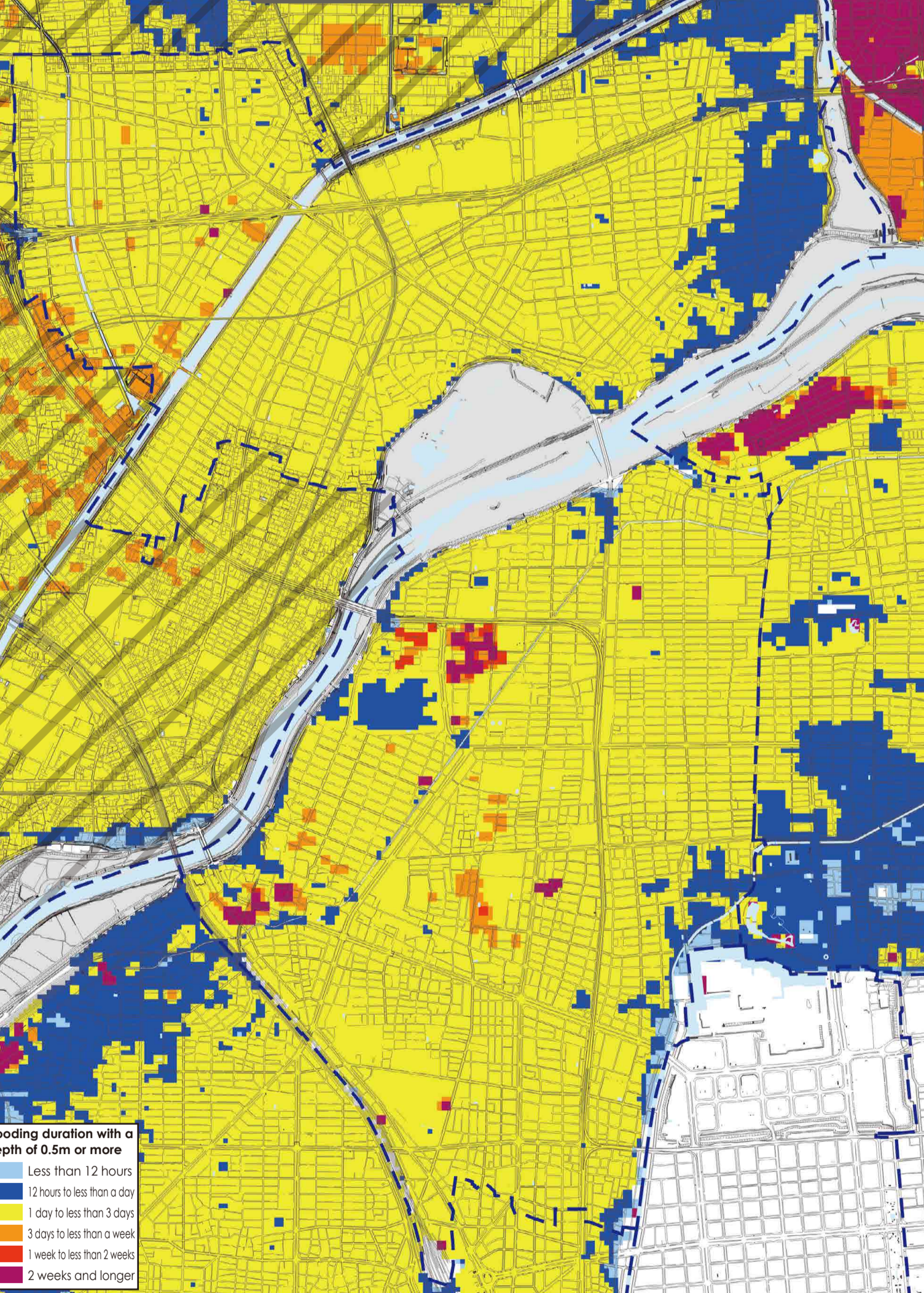


(Descriptions)
• The inundation area as well as the depth and duration of flooding were calculated with the **maximum possible rainfall in mind**.
• The inundation area as well as the depth and duration of flooding are only assumptions. Flooding may occur at a larger scale depending on a variety of factors.
• This map was created looking into all the areas indicated on the expected inundation area maps published by the Ministry of Land, Infrastructure, Transport and Tourism (MLIT) and Aichi Prefecture. The deeper flooding depth and the longer flooding duration were indicated in areas that overlapped.

~Expected inundation area maps used to make this map (Nishi ward)~

Expected Inundation Area Map	Issued by	Released on	Rainfall condition
Kiso River	MLIT	Apr-2020	2-day precipitation amount 527mm
Shonai/Yada Rivers	MLIT	Mar-2020	24-hour precipitation amount 578mm
Gose River basin	Aichi Prefecture	Nov-2024	24-hour precipitation amount 790mm
Yada and Kanare Rivers basin	Aichi Prefecture	Mar-2025	24-hour precipitation amount 735mm (Yada River basin)
Shinkawa River basin	Aichi Prefecture	Nov-2024	24-hour precipitation amount 836mm (Kanare River basin)
			24-hour precipitation amount 751mm (Shinkawa River basin)
			24-hour precipitation amount 736mm (Gojo River basin (downstream))
			24-hour precipitation amount 815mm (Gojo River basin (upstream)/Oyama River basin)
Horikawa River basin	Aichi Prefecture	Mar-2025	24-hour precipitation amount 805mm (Aoki River basin)
Hatta River basin	Aichi Prefecture	Nov-2024	24-hour precipitation amount 836mm (tributary streams)
			24-hour precipitation amount 793mm (Horikawa and Shinhorikawa Rivers basin)

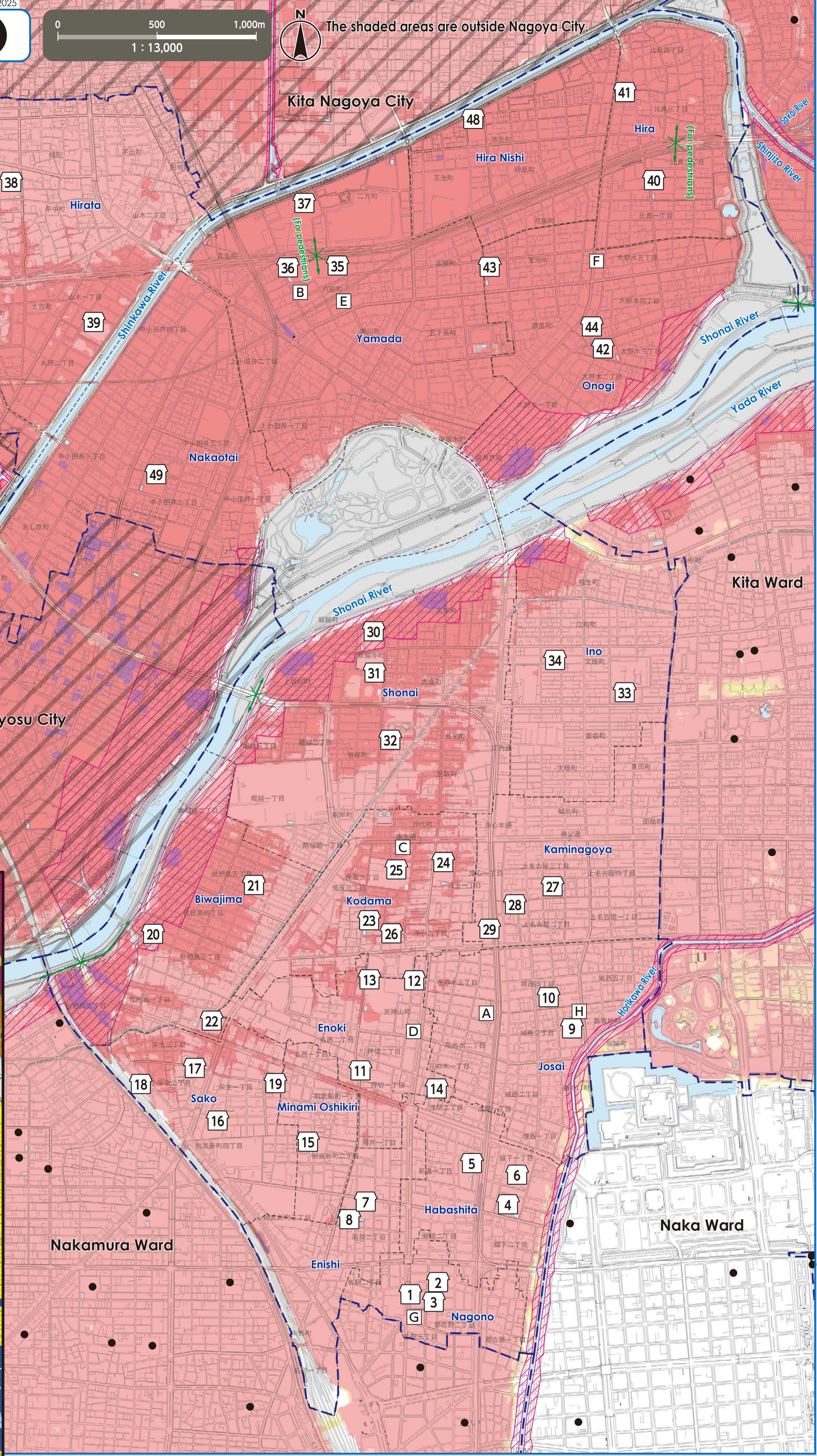
duration of flooding Map



Evacuation to Designated Emergency Evacuation Shelter
○ Please evacuate to a designated emergency evacuation shelter according to the type of disaster if you are in danger (especially when evacuation information (evacuation instruction, etc.) is released) and you cannot stay at home to save your life.
○ Designated emergency evacuation shelters within flooding risk areas including collapse of buildings have been confirmed to be structurally safe.
○ Please contact the ward office in advance to confirm the place you are going is safe if you intend to evacuate on your own command.
Nagoya City Disaster Countermeasures Office / Nishi Ward Headquarters (Nishi Ward Office)
Tel: 521-5311 (Main) 523-4511~5 (Direct) Fax: 522-5069

Legend
○ Designated Emergency Evacuation Shelter
Places where you can take shelter from the danger of a flooding disaster in order to save your life.
+ Underpasses
Areas where heavy rain will cause roads to be flooded and closed to traffic.
- - - - - Ward boundary
- - - - - School district boundary
School districts are approximate. Please contact the respective ward office for further information.
● Designated Emergency Evacuation Shelter outside the ward

Public Office (Marked as □)
[A] Nishi Ward Office
[B] Nishi Ward Office Yamada Branch
[C] Nishi Fire Station
[D] Nishi Fire Station Oshikiri Branch
[E] Nishi Fire Station Yamada Branch
[F] Nishi Fire Station Onogi Branch
[G] Emergency Task Forces 2
[H] Nishi Public Works Office



*Please refer to the hazard maps of other wards to verify whether their designated emergency evacuation shelters are open to our residents. Hazard Maps of all the wards are available on the official website of Nagoya City.

No.	Facility Name (Marked as □)	Address	Designated Emergency Evacuation Shelter Flood/ Inland flood	No.	Facility Name (Marked as □)	Address	Designated Emergency Evacuation Shelter Flood/ Inland flood
1	Former Nagono Elementary School	14-1 Nagono 2-chome	2 nd floor or higher	25	Seiryō Senior High School	20-65 Kodama 2-chome	2 nd floor or higher
2	Nagono Community Center	15-25 Nagono 2-chome	2 nd floor or higher	26	Kodama Community Center	4-14 Kodama 2-chome	2 nd floor or higher
3	Daisan Kindergarten	15-1 Nagono 2-chome	2 nd floor or higher	27	Kaminagoya Elementary School	4-18 Kaminagoya 3-chome	2 nd floor or higher
4	Nagoya Elementary School	7-17 Habashita 1-chome	2 nd floor or higher	28	Kaminagoya Community Center	23-22 Kaminagoya 2-chome	2 nd floor or higher
5	Kikui Junior High School	6-33 Shimmichi 1-chome	2 nd floor or higher	29	Nishi Lifelong Learning Center	1-45 Joshin 1-chome	2 nd floor or higher
6	Habashita Community Center	9-30 Habashita 1-chome	2 nd floor or higher	30	Shonai Elementary School	2-5-1 Shimpukuji-cho	2 nd floor or higher
7	Former Enishi Elementary School	12-32 Kikui 2-chome	2 nd floor or higher	31	Nazuka Junior High School	2-1-2 Shimpukuji-cho	2 nd floor or higher
8	Enishi Community Center	23-3 Kikui 2-chome	2 nd floor or higher	32	Shonai Community Center	1-24-2 Torimi-cho	2 nd floor or higher
9	Josai Elementary School	14-25 Josai 3-chome	2 nd floor or higher	33	Ino Elementary School	2-84 Konomi-cho	2 nd floor or higher
10	Josai Community Center	2-21 Josai 4-chome	2 nd floor or higher	34	Ino Community Center	5-40 Mataho-cho	2 nd floor or higher
11	Enoki Elementary School	12-25 Oshikiri 1-chome	2 nd floor or higher	35	Yamada Elementary School	381-1 Yasuji-cho	2 nd floor or higher
12	Tenjinyama Junior High School	4-12 Tenjinyama-cho	2 nd floor or higher	36	Yamada Junior High School	363-1 Yasuji-cho	2 nd floor or higher
13	Prefectural Nagoya Nishi Senior High School	4-7 Tenjinyama-cho	2 nd floor or higher	37	Yamada Senior High School	19-1 Futakata-cho	3 rd floor or higher
14	Enoki Community Center	8-18 Sengen 2-chome	2 nd floor or higher	38	Hirata Elementary School	88 Nishihara-cho	2 nd floor or higher
15	Minami Oshikiri Elementary School	14-3 Naitake-shimmachi 2-chome	2 nd floor or higher	39	Hirata Junior High School	1 Yamaki 1-chome	2 nd floor or higher
16	Sako Elementary School	27-26 Sako 1-chome	2 nd floor or higher	40	Hira Elementary School	175 Hira 2-chome	2 nd floor or higher
17	Sako Community Center	13-4 Sako 2-chome	2 nd floor or higher	41	Hira Community Center	154 Hira 3-chome	2 nd floor or higher
18	Meitetsu Hospital Building 3	26-11 Sako 2-chome	2 nd floor or higher	42	Onogi Elementary School	17 Onogi 3-chome	2 nd floor or higher
19	Nagoya City Nishi Cultural Center	3-20 Sako 1-chome	2 nd floor or higher	43	Yamada Higashi Junior High School	10 Hochi-cho	3 rd floor or higher
20	Biwajima Elementary School	16-33 Biwajima 3-chome	3 rd floor or higher	44	Onogi Community Center	181 Onogi 4-chome	2 nd floor or higher
21	Biwajima Community Center	11-15 Biwajima 5-chome	2 nd floor or higher	45	Ukino Elementary School	98 Ukino-cho	2 nd floor or higher
22	Biwajima Sports Center	1-2 Biwajima 1-chome	2 nd floor or higher	46	Ukino Community Center	97-93 Ukino-cho	2 nd floor or higher
23	Kodama Elementary School	3-33 Kodama 2-chome	2 nd floor or higher	47	Nishi Resource Center	68-1 Araki-cho	2 nd floor or higher
24	Joshin Junior High School	15-12 Kodama 1-chome	2 nd floor or higher	48	Hira Nishi Elementary School	347 Tamaike-cho	2 nd floor or higher
				49	Nakaotai Elementary School	189 Nakaotai 2-chome	3 rd floor or higher

We used the basic urban planning maps used between 2020 and 2021 to create this map. Corrections were made accordingly.
We used the urban planning maps of the following places with their consent: Kita Nagoya City and Kiyosu City. (Approval numbers - Kita Nagoya City: 7北都162, Kiyosu City: 7清須都319)