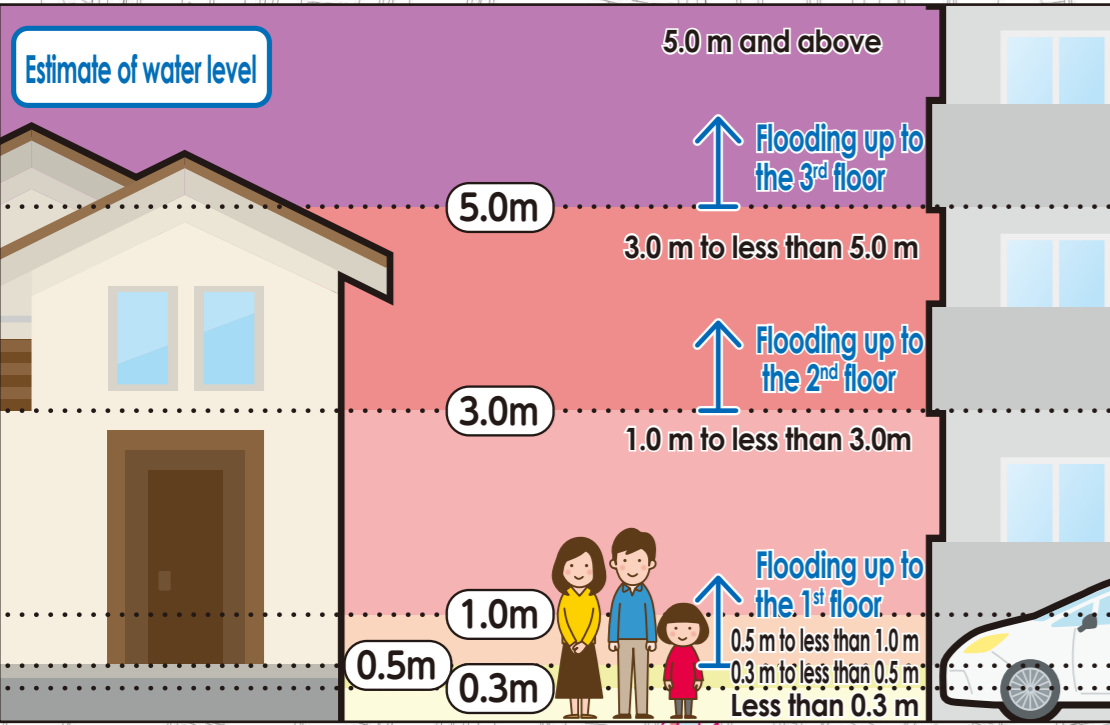
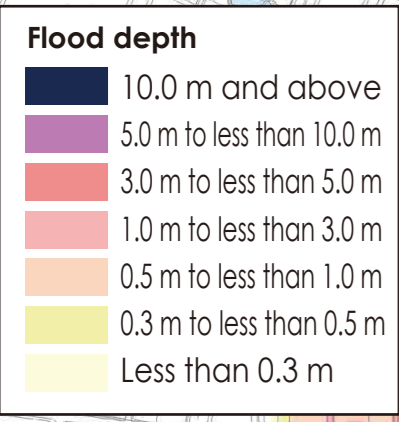


Flood Hazard Map Showa Ward



Flooding risk areas including collapse of buildings
(In the event of a river flood, houses may collapse or be washed away due to overflowing water or erosion of riverbanks.)

When an evacuation information is emitted, residents living in these areas must evacuate to outer areas instead of going to upper floors.

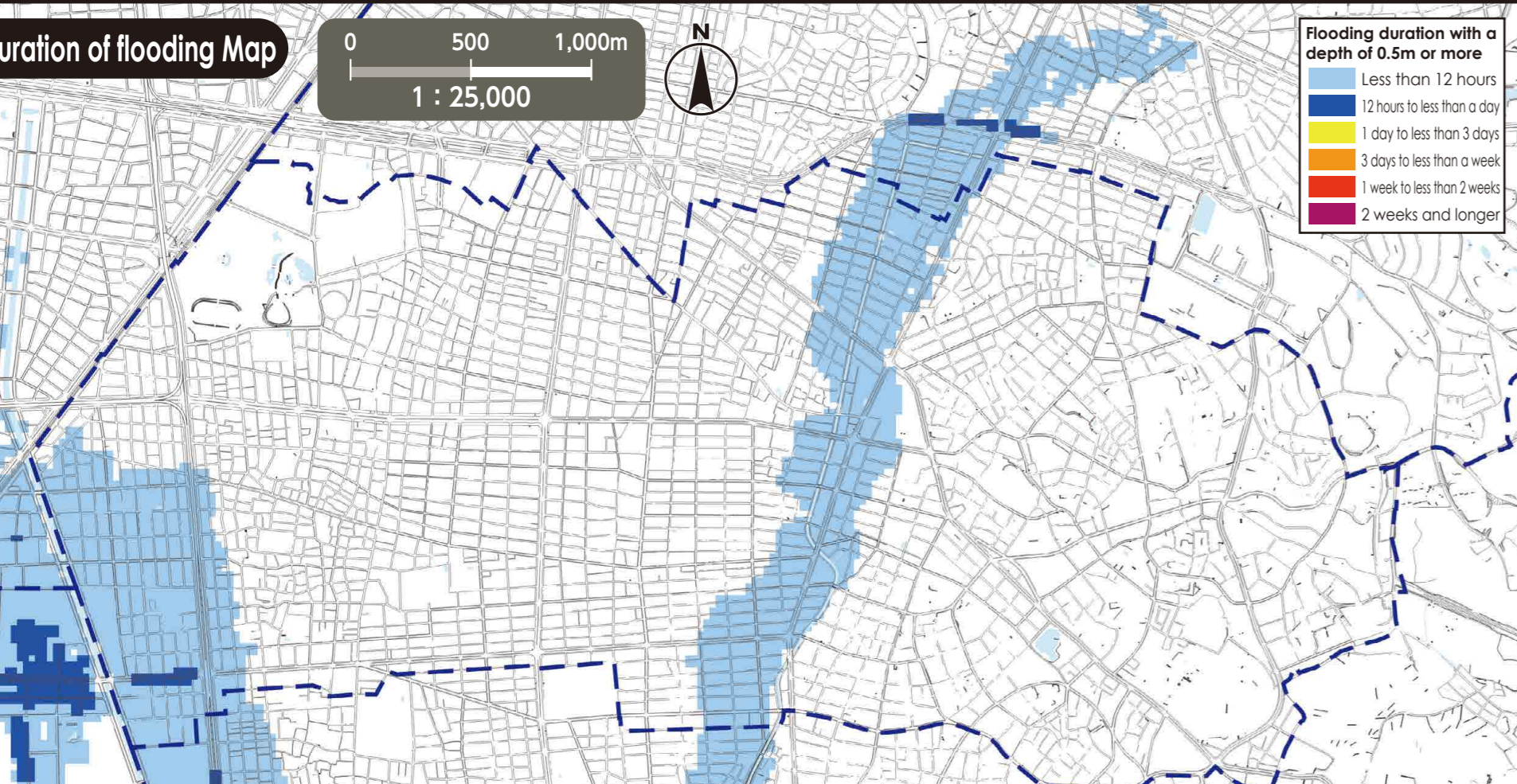
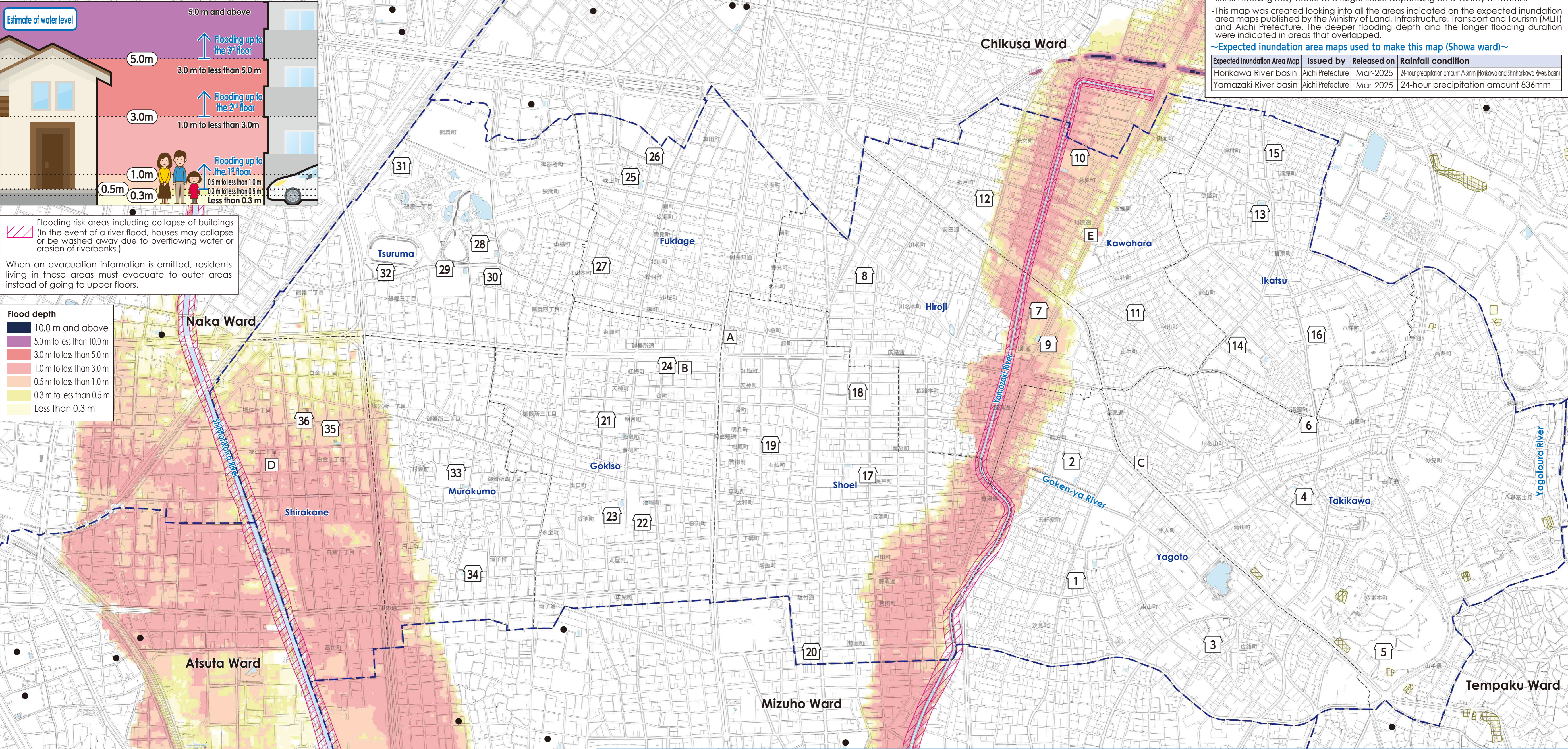


(Descriptions)

- The inundation area as well as the depth and duration of flooding were calculated with the **maximum possible rainfall in mind**.
- The inundation area as well as the depth and duration of flooding are only assumptions. Flooding may occur at a larger scale depending on a variety of factors.
- This map was created looking into all the areas indicated on the expected inundation area maps published by the Ministry of Land, Infrastructure, Transport and Tourism (MLIT) and Aichi Prefecture. The deeper flooding depth and the longer flooding duration were indicated in areas that overlapped.

~Expected inundation area maps used to make this map (Showa ward)~

Expected Inundation Area Map	Issued by	Released on	Rainfall condition
Horikawa River basin	Aichi Prefecture	Mar-2025	24-hour precipitation amount 793mm (Horikawa and Shinhorikawa Rivers basin)
Yamazaki River basin	Aichi Prefecture	Mar-2025	24-hour precipitation amount 836mm



*Please refer to the hazard maps of other wards to verify whether if their designated emergency evacuation shelters are open to our residents. Hazard Maps of all the wards are available on the official website of Nagoya City.

No.	Facility Name (Marked as □)	Address	Designated Emergency Evacuation Shelter Flood/ Inland Flood/Landslide
1	Yagoto Elementary School	25 Goken-ya-cho	○
2	Komagata Junior High School	3-23 Komagata-cho	○
3	Yagoto Community Center	79 Aza minamiyama, Hiroji-cho	○
4	Takikawa Elementary School	131 Takikawa-cho	○
5	Chukyo University	101-2 Yagoto-hommachi	○
6	Takikawa Community Center	46-4 Kawanayama-cho	○
7	Hiroji Elementary School	8-21-2 Kawahara-tori	2 nd floor or higher
8	Hiroji Community Center	2-10-1 Kawana-hommachi	○
9	Nagoya City Showa play house	1-41-2 Hanami-tori	2 nd floor or higher
10	Kawahara Elementary School	2-1 Hagiwara-cho	2 nd floor or higher
11	Kawahara Community Center	1-52-2 Mukaiyama-cho	○
12	Child Welfare Center	4-16 Oriido-cho	○
13	Ikatsu Elementary School	2-100 Ikatsu-cho	○
14	Kawana Junior High School	93 Rakuen-cho	○
15	Ikatsu Community Center	1-38 Fukuhara-cho	○
16	Nanzan University	18 Yamazato-cho	○
17	Shoei Elementary School	2-1 Nagato-cho	○
18	NUCB International Junior & Senior High School	1-16 Hiroji-hommachi	○
19	Showa Lifelong Learning Center	1-48 Ishibotoke-cho	○
20	Shoei Community Center	1-12 Kikuzono-cho	○

No.	Facility Name (Marked as □)	Address	Designated Emergency Evacuation Shelter Flood/ Inland Flood/Landslide
21	Gokiso Elementary School	1-32 Meigetsu-cho	○
22	Sakurayama Junior High School	1-15 Ikebata-cho	○
23	Koyo Senior High School	47 Hiroike-cho	○
24	Gokiso Community Center	2-15-2 Kobai-cho	○
25	Fukiage Elementary School	1-22 Fukiage-cho	2 nd floor or higher
26	Showa Sports Center	6-15 Fukiage 2-chome	○
27	Fukiage Community Center	1-9-1 Tsuruha-cho	○
28	Tsuruma Elementary School	1-85 Tsurumai 1-chome	○

No.	Facility Name (Marked as □)	Address	Designated Emergency Evacuation Shelter Flood/ Inland Flood/Landslide
29	Kitayama Junior High School	9-23 Tsurumai 3-chome	○
30	Tsuruma Community Center	2-25 Tsurumai 4-chome	○
31	OKAYA & CO., LTD. Nagoya Civic Assembly Hall	1-3 Tsurumai 1-chome	○
32	STATION Ai	2-32 Tsurumai 1-chome	○
33	Murakumo Elementary School	26-16 Murakumo-cho	○
34	Enjo Junior High School	17-18 Takiko-cho	○
35	Shirakane Elementary School	2-5 Shirakane 2-chome	2 nd floor or higher
36	Shirakane Community Center	20-18 Shirakane 1-chome	2 nd floor or higher

Evacuation to Designated Emergency Evacuation Shelter

- Please evacuate to a designated emergency evacuation shelter according to the type of disaster if you are in danger (especially when evacuation information (evacuation instruction, etc.) is released) and you cannot stay at home to save your life.
- Designated emergency evacuation shelters within flooding risk areas including collapse of buildings have been confirmed to be structurally safe.
- Please contact the ward office in advance to confirm the place you are going is safe if you intend to evacuate on your own command.

Nagoya City Disaster Countermeasures Office /Showa Ward Headquarters (Showa Ward Office) Tel: 731-1511 (Main) 735-3811~5 (Direct) Fax: 733-5534

Legend	
○	Designated Emergency Evacuation Shelter Places where you can take shelter from the danger of a flooding disaster in order to save your life.
■	Landslide Disaster (Special) Warning Zone Areas where landslides may occur.
—	Ward boundary
—	School district boundary School districts are approximate. Please contact the respective ward office for further information.
+	Underpass Areas where heavy rain will cause roads to be flooded and closed to traffic.
●	Designated Emergency Evacuation Shelter outside the ward

Public Office (Marked as □)	
A	Showa Ward Office
B	Showa Fire Station
C	Showa Fire Station Yagoto Branch
D	Showa Fire Station Shirakane Branch
E	Showa Public Works Office