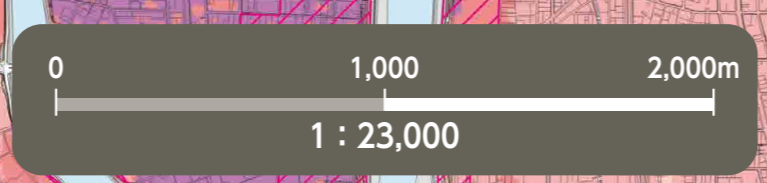
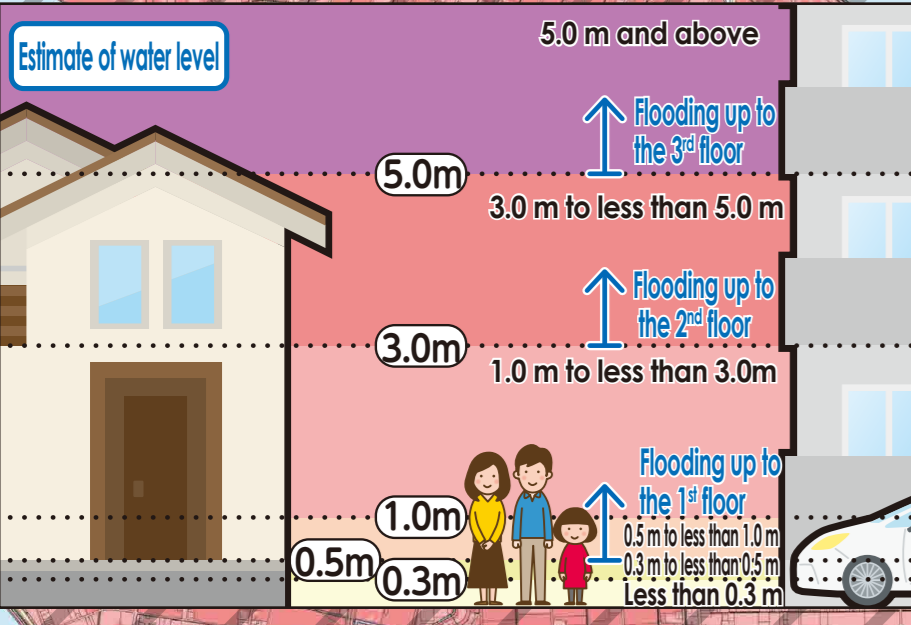
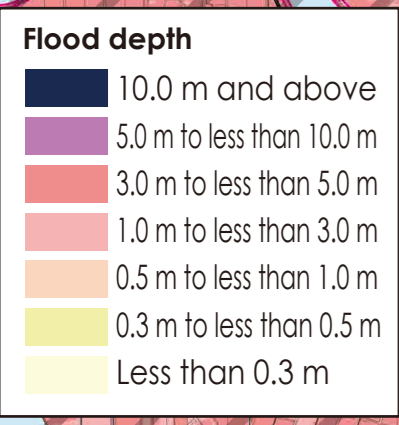


# Flood Hazard Map Minato Ward

As of August, 2025



**(Descriptions)**  
 • The inundation area as well as the depth and duration of flooding were calculated with the maximum possible rainfall in mind.  
 • The inundation area as well as the depth and duration of flooding are only assumptions. Flooding may occur at a larger scale depending on a variety of factors.  
 • This map was created looking into all the areas indicated on the expected inundation area maps published by the Ministry of Land, Infrastructure, Transport and Tourism (MLIT) and Aichi Prefecture. The deeper flooding depth and the longer flooding duration were indicated in areas that overlapped.



~Expected inundation area maps used to make this map (Minato ward)~

Expected Inundation Area Map	Issued by	Released on	Rainfall condition
Kiso River	MLIT	Apr-2020	2-day precipitation amount 527mm
Shonai/Yada Rivers	MLIT	Mar-2020	24-hour precipitation amount 578mm
Yada and Kanare Rivers basin	Aichi Prefecture	Mar-2025	24-hour precipitation amount 735mm (Yada River basin) 24-hour precipitation amount 836mm (Kanare River basin)
Shinkawa River basin	Aichi Prefecture	Nov-2024	24-hour precipitation amount 751mm (Shinkawa River basin) 24-hour precipitation amount 736mm (Gojo River basin [downstream]) 24-hour precipitation amount 815mm (Gojo River basin [upstream]) (Oyama River basin) 24-hour precipitation amount 805mm (Aoki River basin) 24-hour precipitation amount 836mm (tributary streams)
Horikawa River basin	Aichi Prefecture	Mar-2025	24-hour precipitation amount 793mm (Horikawa and Shinhorikawa Rivers basin)
Tempaku River basin	Aichi Prefecture	Mar-2025	24-hour precipitation amount 774mm (Tempaku River basin)
Yamazaki River basin	Aichi Prefecture	Mar-2025	24-hour precipitation amount 836mm (Ogi River basin)
Nikko River basin	Aichi Prefecture	Mar-2025	24-hour precipitation amount 713mm (Nikko River basin) 24-hour precipitation amount 836mm (tributary streams)

Flooding risk areas including collapse of buildings  
 (In the event of a river flood, houses may collapse or be washed away due to overflowing water or erosion of riverbanks.)  
 When an evacuation information is emitted, residents living in these areas must evacuate to outer areas instead of going to upper floors.

\*Please refer to the hazard maps of other wards to verify whether if their designated emergency evacuation shelters are open to our residents. Hazard Maps of all the wards are available on the official website of Nagoya City.

No.	Facility Name (Marked as □)	Address	Designated Emergency Evacuation Shelter Flood/Inland flood
1	Higashi Tsukiji Elementary School (except for south school building)	26 Higashi Tsukiji-cho	Evacuation possible except the South school Building
2	Higashi Tsukiji Community Multipurpose Center	9-10 Kiba-cho	2nd floor or higher
3	Higashi Tsukiji School District Disaster Prevention Center	9-9 Kiba-cho	○
4	Nagoya Central Wholesale Market, Nambu Market	1-39 Funami-cho	○
5	Nakagawa Elementary School	37-6 Tatsumi-cho	2nd floor or higher
6	Komei Junior High School	1-38 Komei 1-chome	2nd floor or higher
7	Nakagawa Community Center	3-13 Komei 1-chome	2nd floor or higher
8	Tokai Elementary School	1-1-3 Kuban-cho	○
9	Tokai Community Center	1-3 Minami Juban-cho	○
10	Seisho Elementary School	1-3 Higashi Dongo-cho	2nd floor or higher
11	Seisho Community Center	4-1-2 Shinfuno-cho	2nd floor or higher
12	Aichiken Budokan	1-1-4 Maruike-cho	2nd floor or higher
13	Ote Elementary School	3-28 Ote-machi	2nd floor or higher
14	Waterworks & Sewerage Bureau Nakagawarashi Water Distribution Station	5-16 Iroha-cho	2nd floor or higher
15	Kosei Elementary School	55 Juichiya 3-chome	2nd floor or higher
16	Hojin Junior High School	77 Hojin 1-chome	2nd floor or higher
17	Kosei Community Center	308 Hojin 5-chome	2nd floor or higher
18	Waterworks & Sewerage Bureau Hojin Water Treatment Center	2501 Hojin 4-chome	○
19	Inaei Elementary School	6-35 Inaei 4-chome	2nd floor or higher
20	Konan Junior High School	4-39 Inaei 1-chome	2nd floor or higher
21	Inaei Community Center	7-56 Inaei 4-chome	2nd floor or higher
22	Noseki Elementary School	4-11 Noseki 1-chome	○
23	Noseki Community Center	3-13 Noseki 4-chome	○
24	Inaei Sports Center *	1-10 Noseki 5-chome	○
25	Nagoya City Inaeiso Meeting House	3 Noseki 5-chome	○
26	Nagoya City Minatosa Meeting House (Bldg.1)	1 Noseki 4-chome	○
27	Nagoya City Minatosa Meeting House (Bldg.6)/Nagoya City Minato Silver Minami Meeting House	5-4 Noseki 3-chome	○
28	Nagoya City Minatosa Meeting House (Bldg.7)	5 Noseki 3-chome	○
29	Ousu Elementary School	4-59 Dongo-cho	2nd floor or higher
30	Kohoku Junior High School	2-1 Kohoku-cho	2nd floor or higher
31	Ousu Community Center	2-34 Kohoku-cho	2nd floor or higher
32	Nagoya Off-Track Betting Ticket Office (San-R Nagoya/J-PLACE Nagoya)	1-1 Taimei-cho	2nd floor or higher
33	Shoho Elementary School	5-22 Shoho-cho	2nd floor or higher
34	Shoho Community Center	8-134 Shoho-cho	2nd floor or higher
35	Meitoku Elementary School	259 Ousu 3-chome	2nd floor or higher
36	Meitoku Community Center	147 Ousu 4-chome	2nd floor or higher
37	Tochi Elementary School	2401 Tochi 3-chome	2nd floor or higher
38	Tochi Junior High School	608 Tochi 1-chome	2nd floor or higher
39	Tochi Community Center	601-1 Tochi 1-chome	2nd floor or higher

No.	Facility Name (Marked as □)	Address	Designated Emergency Evacuation Shelter Flood/Inland flood
40	Nishi Tsukiji Elementary School	2-33 Hama 1-chome	○
41	Nishi Tsukiji Community Center	10-31 Hama 2-chome	○
42	Aichi Kaiun Co.,Ltd.	1-11 Hama 2-chome	○
43	Nagoya Port Authority Main Building/Nagoya Port Hall	1-11 Minato-machi	2nd floor or higher
44	Koraku Elementary School	3-36 Koraku 2-chome	2nd floor or higher
45	Toko Junior High School	7-16 Koraku 1-chome	2nd floor or higher
46	Koraku Community Center	1-65 Koyo 1-chome	○
47	Minato Lifelong Learning Center	10-18 Koyo 1-chome	○
48	Keiwa Kindergarten	4-18 Koei 4-chome	2nd floor or higher
49	Takagi Elementary School	3-20 Takagi-cho	2nd floor or higher
50	Prefectural Ishin Senior High School	2-262 Ishin-cho	2nd floor or higher
51	Takagi Community Center	2-15 Aburaya-cho	2nd floor or higher
52	Jinguji Elementary School	501 Jinguji 2-chome	2nd floor or higher
53	Jinguji Community Center	724-1 Aza kaishoua, Hojin-cho	2nd floor or higher
54	Nanyo Elementary School	328 Higashi Chaya 2-chome	2nd floor or higher
55	Nanyo Higashi Junior High School	35-2 Nishi Chaya 1-chome	2nd floor or higher
56	Prefectural Nanyo Senior High School	99 Onishi 2-chome	2nd floor or higher
57	Nanyo Center	330 Higashi Chaya 2-chome	2nd floor or higher
58	Nanyo Community Plaza	123 Higashi Chaya 3-chome	2nd floor or higher
59	Fujimae Meeting Hall	742 Fujimae 1-chome	2nd floor or higher
60	Kawara Emergency Evacuation Area	156 Nishi Chaya 4-chome	2nd floor or higher
61	Fujitaka Emergency Evacuation Area	81 Fujitaka 1-chome	2nd floor or higher
62	Nanashima Emergency Evacuation Area	162 Nanashima 2-chome	2nd floor or higher
63	Ogawa Emergency Evacuation Area	134 Ogawa 3-chome	2nd floor or higher
64	Nanyo-daiichi Nursery School	305 Higashi Chaya 2-chome	2nd floor or higher
65	Nishi Fukuta Elementary School	1601 Nishi Fukuta 5-chome	2nd floor or higher
66	Nishi Fukuta Community Center	103 Fukuya 2-chome	2nd floor or higher
67	Chayanochi Land Improvement District Office	2602 Shinchaya 5-chome	2nd floor or higher
68	Fukuta Elementary School	1207 Shichitanno 1-chome	2nd floor or higher
69	Nanyo Hikari Nursery School	2401 Chita 2-chome	2nd floor or higher
70	Fukuta Community Center	213 Sendoba 4-chome	2nd floor or higher
71	Fukuharu Elementary School	2901 Harutano 1-chome	2nd floor or higher
72	Nanyo Junior High School	121 Harutano 3-chome	2nd floor or higher
73	Nanyo District Hall	101 Harutano 3-chome	2nd floor or higher

No.	Facility Name (Marked as □)	Address
74	Funairi Elementary School	70 Funairi 3-chome, Kanie Town
75	Kanie River Drainage Pumping Station	Aza eigano-chisoi, Oaza kanie-hommachi, Kanie Town

**Evacuation to Designated Emergency Evacuation Shelter**

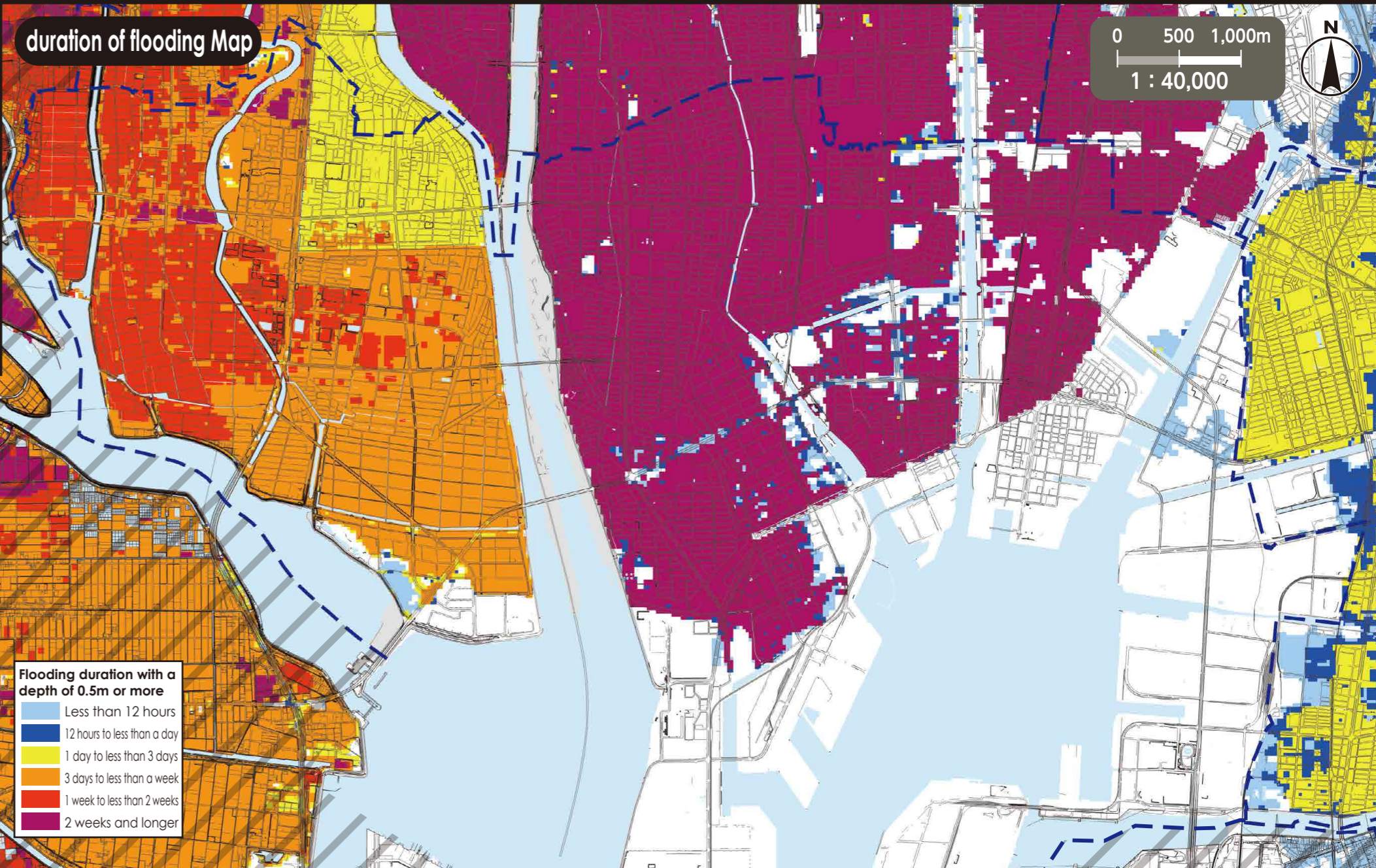
○ Please evacuate to a designated emergency evacuation shelter according to the type of disaster if you are in danger (especially when evacuation information (evacuation instruction, etc.) is released) and you cannot stay at home to save your life.  
 ○ Designated emergency evacuation shelters within flooding risk areas including collapse of buildings have been confirmed to be structurally safe.  
 ○ Please contact the ward office in advance to confirm the place you are going is safe if you intend to evacuate on your own command.

Nagoya City Disaster Countermeasures Office /Minato Ward Headquarters (Minato Ward Office)  
 Tel: 651-3251 (Main) 654-9611~6 (Direct) Fax: 651-6179

**Public Office (Marked as □)**

- A Minato Ward Office/Minato Public Works Office
- D Minato Fire Station Tokaibashi Branch
- G Minato Fire Station Nanyo Branch
- I Emergency Task Forces 5
- B Minato Ward Office Nanyo Branch (Temporary Building)
- E Minato Fire Station Higashi Tsukiji Branch
- H Minato Fire Station Arakogawa Branch
- J Waterworks & Sewerage Bureau West Water Distribution & Sewer Maintenance Center
- C Minato Fire Station
- F Minato Fire Station Inaei Branch

We used the basic urban planning maps used between 2020 and 2021 to create this map. Corrections were made accordingly.  
 We used the urban planning maps of the following places with their consent: Kanie Town, Yatomi City, Tobishima Village and Tokai City.  
 [Approval numbers - Kanie Town: 7蟹まち取41, Yatomi City: 7跡都49 Tobishima Village: 7建587, Tokai City: 都54]  
 Landslide Disaster Hazard Map, Aichi Prefecture, Creative Commons License Attribution 2.1 Japan  
 (<http://creativecommons.org/licenses/by/2.1/jp/>)



**Legend**

- Designated Emergency Evacuation Shelter  
Places where you can take shelter from the danger of a flooding disaster in order to save your life.
- Underpass  
Areas where heavy rain will cause roads to be flooded and closed to traffic.
- Landslide Disaster (Special) Warning Zone  
Areas where landslides may occur.
- Ward boundary
- School district boundary  
School districts are approximate. Please contact the respective ward office for further information.
- Designated Emergency Evacuation Shelter outside the ward

