



## Information on the Subsidy System for the Promotion of Company Advancement into Nagoya

When a business establishes an office in Nagoya for the first time, the city will subsidize part of the cost (rent) to support the expansion of companies into the city.



### Amount of Subsidy

50% of rent (12 months)

Up to JPY **10** million

(deposit, security money, consumption tax etc. not applicable)

### Additional cost of head office relocation registration

When moving the location of the head office registration to the City of Nagoya

JPY **1** million



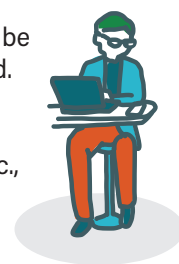
Application Deadline	By the day before the conclusion of the office rental contract
Eligible Companies	ICT companies, foreign companies, startup companies, growth companies * See the other side for details
Eligible Facilities	For the first office to open in the City of Nagoya * Stores, warehouses, factories, service offices, etc. are not eligible. * If you already have an office in the city, are opening a new business in the city (excluding foreign companies), or are opening an office in a public facility, etc., these are not eligible.

## Eligible Companies and Requirements

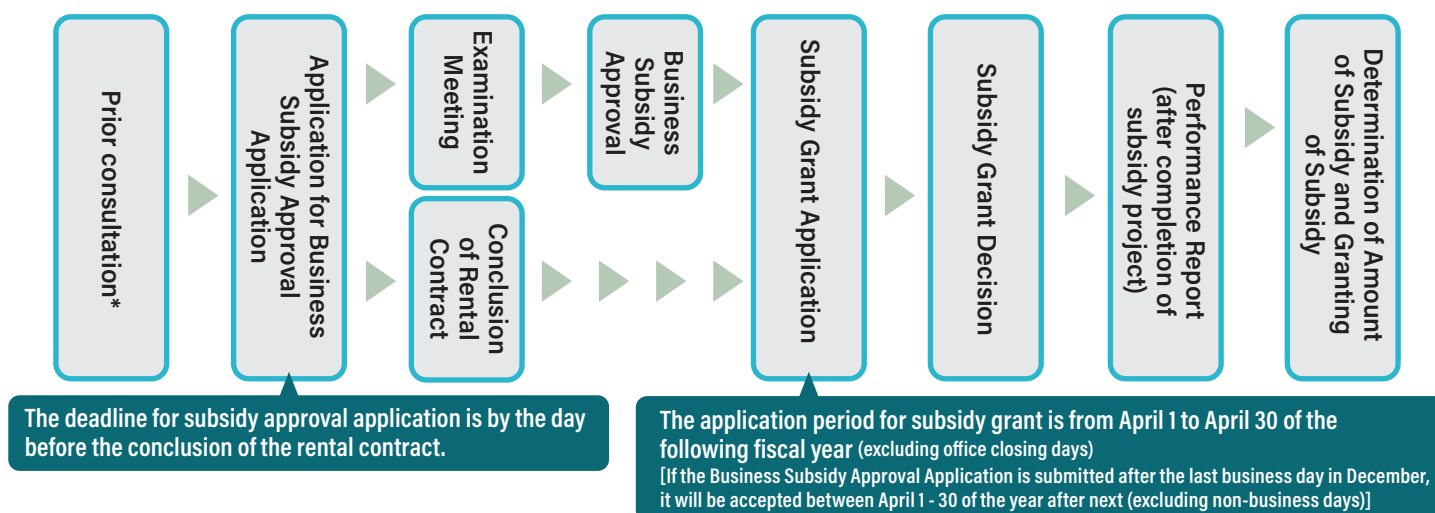
Type	Eligible Companies	Requirements
<b>ICT companies</b>	Eligible companies that have been established for three years or more, whose main business activities are in the fields of ICT, robotics, digital content or creative.	<b>Total floor area</b> of offices eligible for subsidy of <b>30 m<sup>2</sup> or more</b> , and <b>two or more full-time employees</b> such as engineers.
<b>Foreign companies</b>	A company established at least three years ago that is either: A foreign company as prescribed under Article 26, paragraph 1, items 2 and 3 of the Foreign Exchange and Foreign Trade Act; or a firm in which said foreign companies have either provided at least one third of investment or own over one third of shares outstanding.	<b>Total floor area</b> of offices eligible for subsidy of <b>20 m<sup>2</sup> or more</b> , and <b>two or more full-time employees</b> .
<b>Startup companies</b>	A company that has been established for less than 10 years that is using new technologies or new business models such as greening and digitalization, and aiming to develop new markets and achieve high growth.	<b>One or more full-time employees</b> stationed at an office eligible for a subsidy
<b>Growth companies</b>	Companies that have been established for three years or more, with capital of at least JPY10 million, and either JPY100 million in sales or JPY10 million in ordinary income for the most recent fiscal year.	<b>Total floor area</b> of offices eligible for subsidy of <b>30 m<sup>2</sup> or more</b> , and <b>five or more full-time employees</b> .

## Notes

- Please conclude the rental contract for offices eligible for subsidy by March 31 of the year in which you made the business approval application.
- The office must be established within one year of submitting the business approval application.
- Full-time employees refers to persons directly employed by the applicant and insured under at least one of the following: the Employment Insurance Act, the Health Insurance Act, and the Employees' Pension Insurance Act.
- The office must already have the required number of full-time employees when it is first established.
- When a business eligible for subsidy is approved, the details of the subsidized business (company name, amount of subsidy, etc.) may be made public.
- If the business is closed within three years of the establishment of the office the grant decision will be canceled and the subsidy will need to be returned.
- If the business falls under the Act on Control and Improvement of Amusement Businesses, when there is a risk of violating laws and regulations, etc., or a risk of violating public order and morals, it will not be recognized as a business eligible for subsidy.



## Subsidy Grant Application Process



**\*Please be sure to consult with the relevant department below prior to applying for Business Subsidy Approval Application**

### Contact:

Domestic and International Industrial & Commercial Properties Division,  
 Innovation Promotion Department, Economic Affairs Bureau, City of Nagoya

**TEL.052-972-2423**

FAX : 052-972-4135

MAIL : a2423@keizai.city.nagoya.lg.jp

Nagoya Business Advancement Support Site

<https://nagoya-potential.jp/en/>

